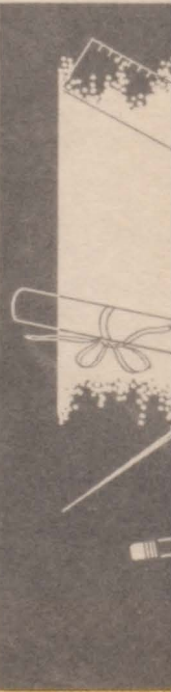
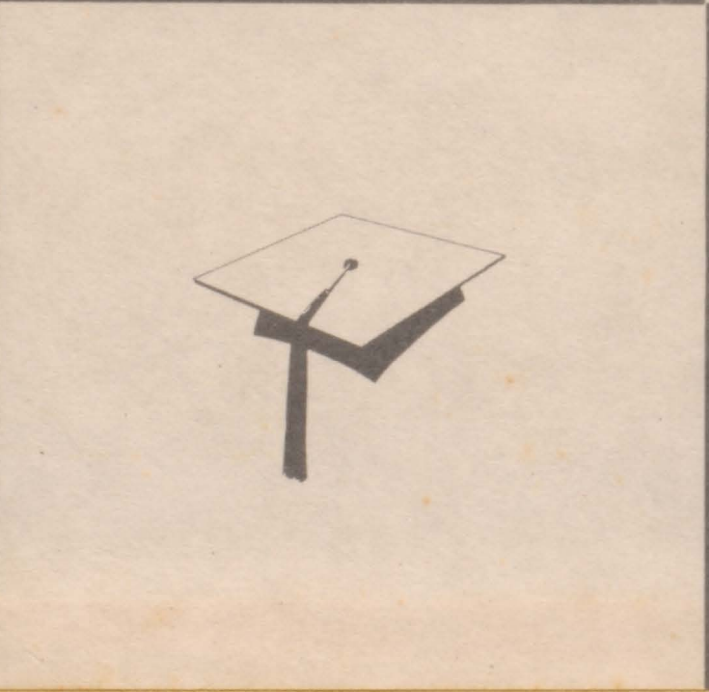
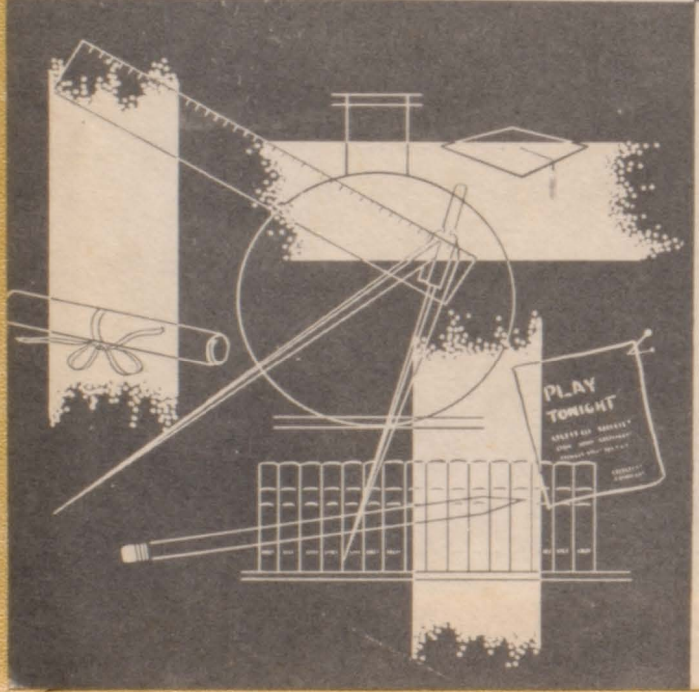
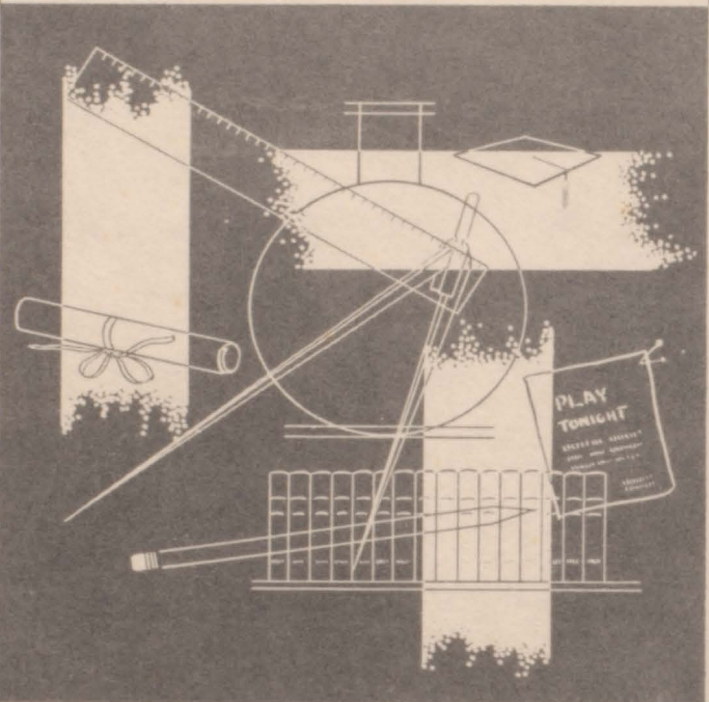
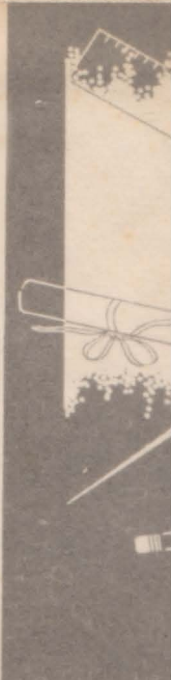
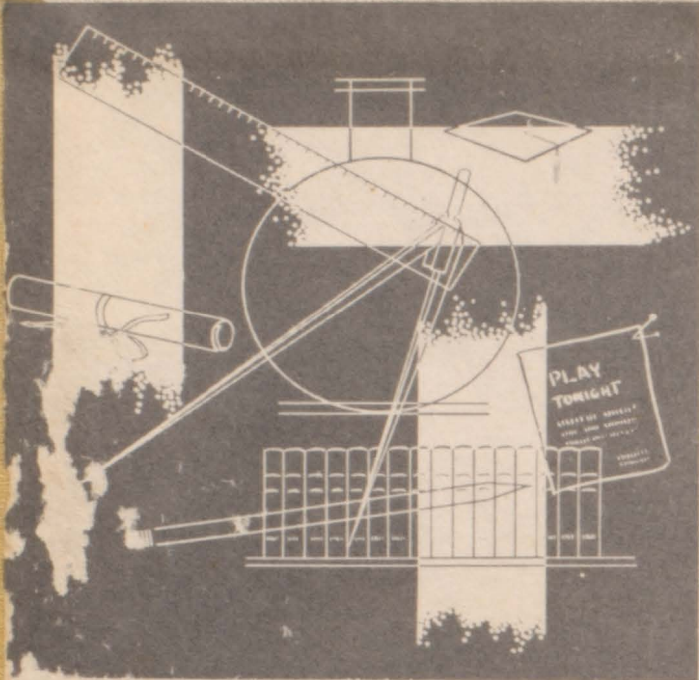
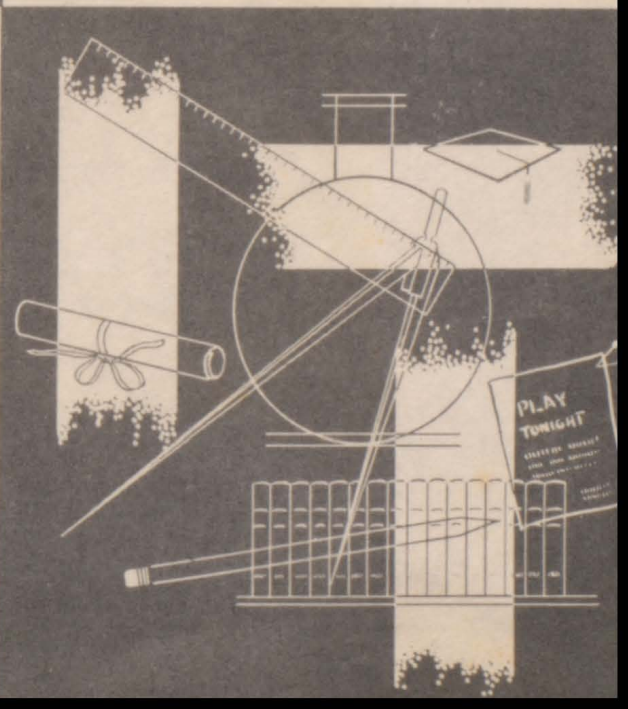
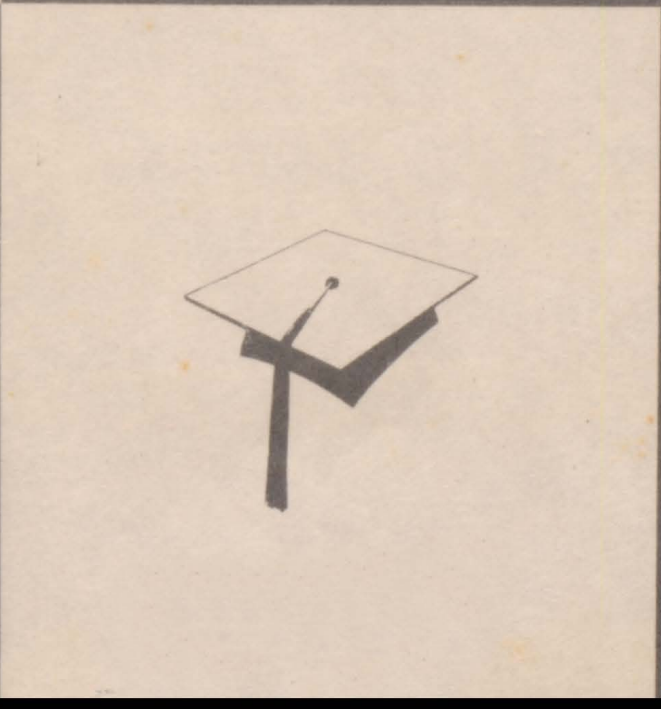
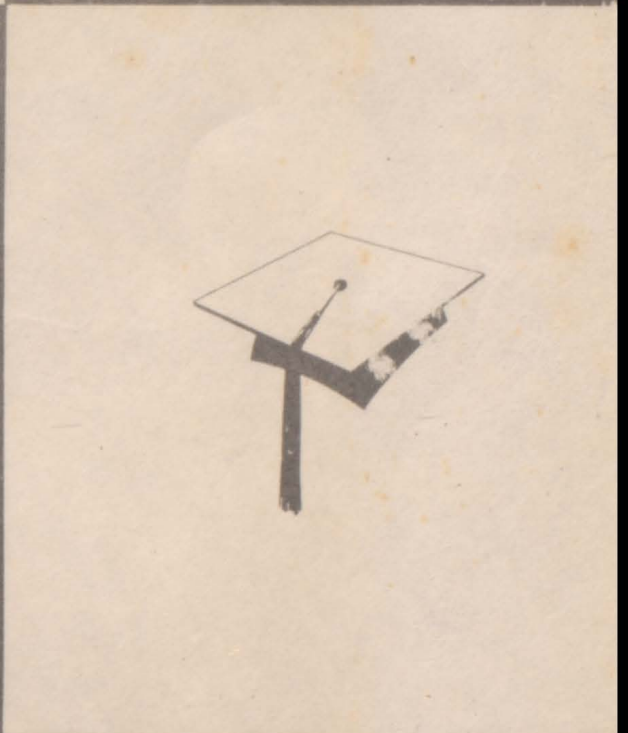
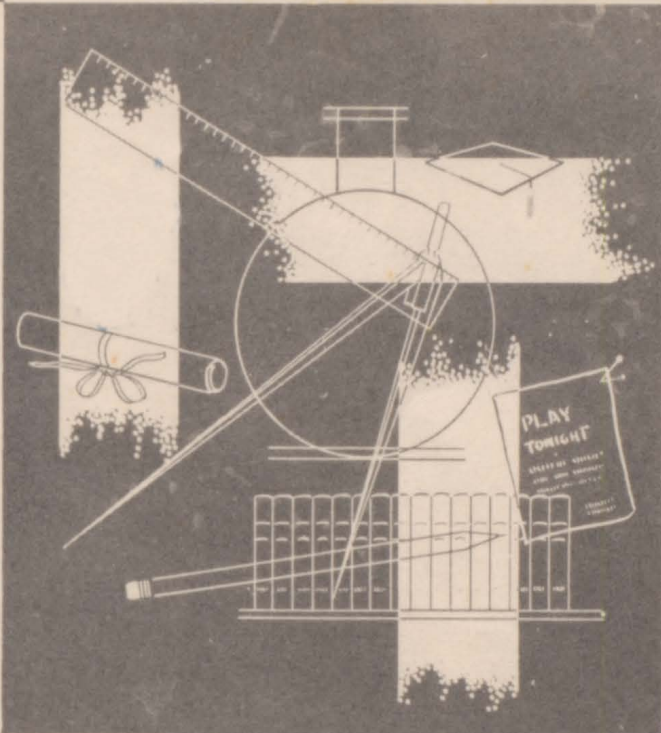
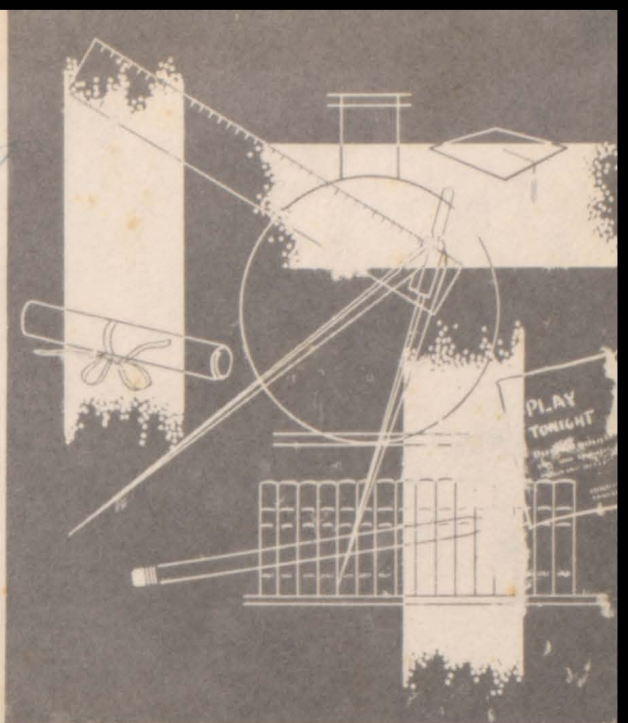


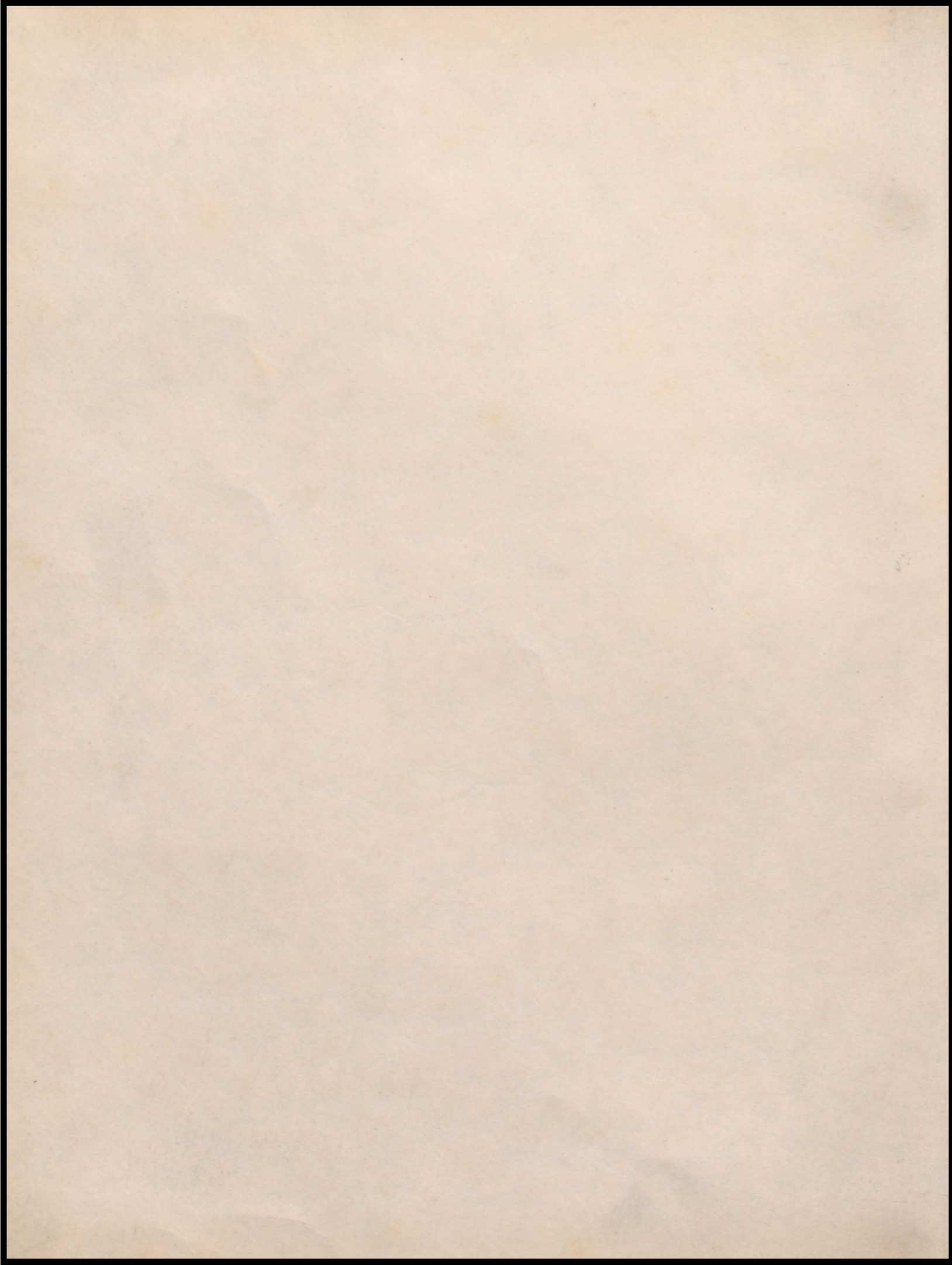
THE


*Red Raider*

1952









Welcome  
To  
Corning High's  
1952  
Annual  
CORNING HIGH SCHOOL  
Corning, Iowa

## FOREWORD

"A reflection that will last,  
Of life's most happy moments past,  
Of friends and school and teacher true,  
Are presented to you by the Yearbook staff of '52".

# DEDICATION

WE DEDICATE TO YOUTH. . .

As the 1952 graduates are handed their diplomas, they will embark on the road of life ahead, wherever it may take them.

And proceeding side by side with youth along that road will be progress. With that eagerness to advance which only youth can provide and with the wisdom which youth can obtain only from older generations, that road will lengthen. Each problem faced, whether or not the answer will prove to be the true one, will be a stepping-stone.

Today, as youth leaves through graduation, the world of high school and its joys, it will be met by the seriousness of living in an age of atomic power. And on the shoulders of youth will be placed the consequence of that power.

This book is dedicated to youth with the hope that the goal which they seek will be inspired by a higher Power than that which a scientist could provide.

As youth moves, so shall the progress of the world.

"The youth of a nation are the trustees of posterity."

Disraeli



## BOARD OF EDUCATION

The men behind the scenes of our school life are better known as the school board. Their job is to promote better school welfare. These men are elected at alternating intervals of every three years. Most of the men you see in our down town store almost everyday but just to remind you their names are: Max M. Lines, Richard Talty, A.M. Dunham, L.L. Laluber, and Dale Ireland. The secretary to this group is Anna E. Lyons. The school Secretary is Mr. Helen Parker.

ANNA E. LYONS  
School Board Secretary



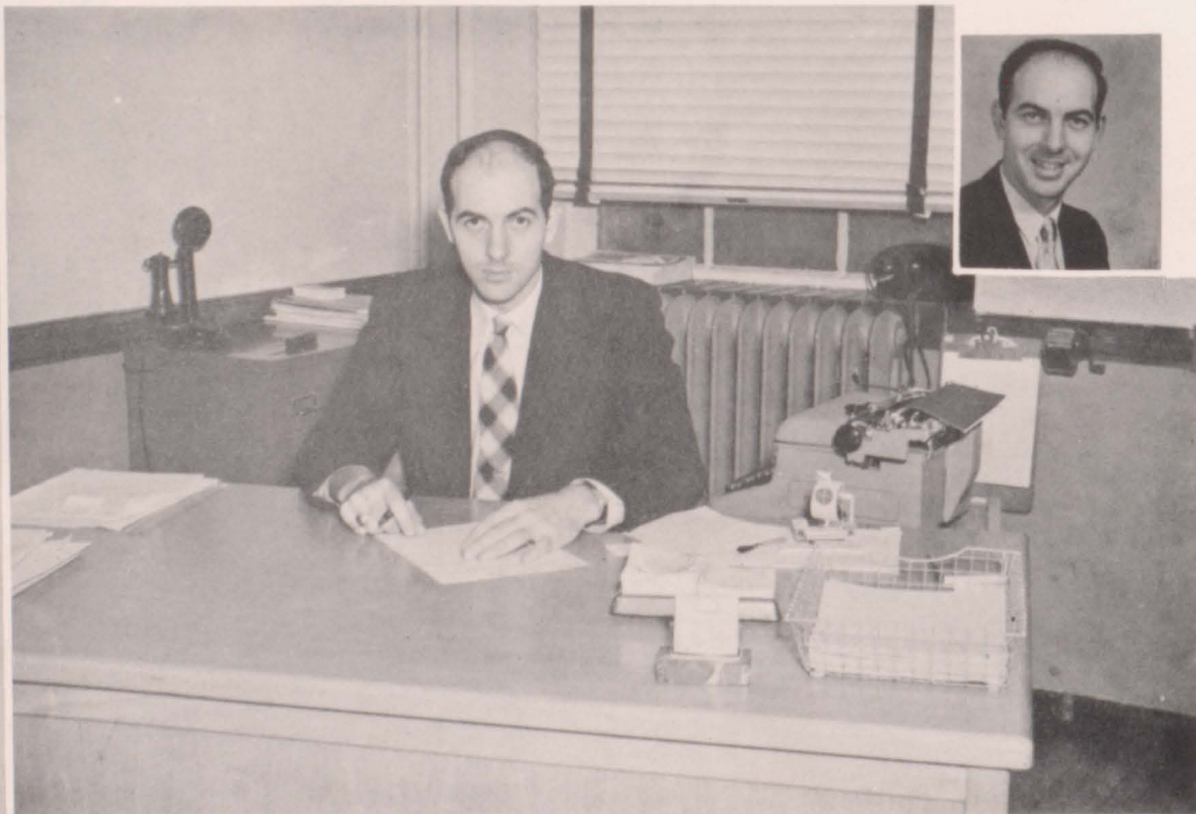
MRS. HELEN PARKER  
School Secretary





D. D. DUNLAVY, Superintendent of Schools  
A. D. - Drake University M. S. E. - Drake University

D. E. RHOADES, Principal  
B. A. - Morningside College M. A. - State University of Iowa





HELEN PARKER  
School Secretary.



ROSALIE TOOKEY  
Music; University of Nebraska, B.M. in Education; University of Nebraska, M.A.; Sponsor of all vocal activities.

DONALD RHOADES  
Social Science; Morningside College, B.A.; University of Iowa, M.A.; Principal.

ALICE PFANDER  
History; Park College, B.A.; Graduate work, Colorado State College of Education; Sponsor of Senior Class.

RALPH CURRIE  
Science; Tarkio College, B.S.; Graduate work, University of Chicago; Colorado Teachers College; University of Colorado; Sponsor of Freshman Class and Student Council.

ELLA JEAN GORMAN  
English; Parsons College, B.A.; Sponsor of the School Paper, the Pep Club and G.A.A. Cheerleaders.

HOWARD LARIMER  
English and Junior High Athletics; Simpson College, B.A.; Graduate work, Simpson; Sponsor of Junior Hi-Y, Sophomore Class and Junior High Athletics.

RENA LIDDELL  
Speech and Drama; Westmar College, B.A.; University of South Dakota, M.A.; Graduate work, University of Iowa, University of Wisconsin, Drake University; Sponsor of Thespians and all speech and drama activities.

HAZEL GREEN  
Library and English; Upper Iowa University, B.A.; Library Science, University of Iowa; Head of the Library Department.

CHARLES UKNES  
Physical Education; University of Iowa, B.S.; Coach of football, baseball and track teams; Sponsor of C Club; Head of Athletic Department.

CARL WHIPPLE (Picture not shown)  
Vocational Agriculture; Iowa State College, B.S.; Sponsor of F. F. A. and Pep Club.





**MAHLON COLLINS**  
 Music; Simpson, B. A. ; Graduate work, University of Iowa; Sponsor of all band activities.

**KATHLEEN PARKER**  
 Commercial; Iowa State Teachers College, B. A. ; Graduate work, Northwestern University; Sponsor of Y-Teens.



**LEE WACHENHEIM**  
 Physical Ed. ; Iowa State Teachers College, B. A. ; Graduate work, Colorado State College of Education; Sponsor of the C Club.

**MARGARET SCHULZ**  
 Science; Carthage College, B. A. ; Graduate work, University of Chicago; Normal University; Dekalb Teachers; Sponsor of Science Fair and Sophomore Class.



**HOWARD TRAXLER**  
 History and Guidance; Drake University, B. S. ; Denver University, M. A. ; Graduate work, Denver University; Sponsor of Hi-Y and Senior Class; Guidance director and head of Audio-visual department.

**EVA KAZEBEER**  
 Science; Drake University, B. S. ; University of Iowa, M. A. ; Sponsor of Freshman Class and Y-Teens.



**JOHN F. DOYLE**  
 English; Northeastern University; Northeastern School of Law; Drake University, B. S. ; Drake University, M. S. ; Sponsor of Yearbook and Junior Class.

**ELIZABETH GAPPA**  
 Vocational; Ottuma Heights College; Iowa State College, B. S. ; Sponsor of F. H. A. and the Junior Class.



**DONALD HELMERS**  
 Commercial; Upper Iowa University; Iowa State Teachers College, B. A. ; Graduate work, University of Iowa; Sponsor of Junior Class and Advisor to Executive Board.

# GRADE FACULTY



FIRST ROW: Miss Ryan, Mrs. Lenz, Mrs. Lyons, Miss Johnston. SECOND ROW: Miss Kain, Mrs. Wachenheim, Miss McDermott, Mrs. Chappell, Mrs. Killion. THIRD ROW: Miss Bennison, Miss Crowley, Mr. Tucker, Mrs. Allison, Mrs. Currie.

FIRST ROW: Gibson, Damewood, Hatton, Farris, Kingery, Day, King, Davis, Dotson, Young, DeWees, Adams. SECOND ROW: Turner, Selby, Smyser, Mercier, Moore, Westlake, Gaskill, Arbuckle, Harrison, G. Thompson, Law, Neill. THIRD ROW: Mr. Tucker, Ruben, Vernon, Berschied, Johnson, Johnson, McGregor, Jacobs, Long, Murdock, H. Thompson, Walford.

# EIGHTH GRADE





The Student Council is an organization created to promote better understanding of the many problems which confront the average high school student in his daily relationships with school and faculty.

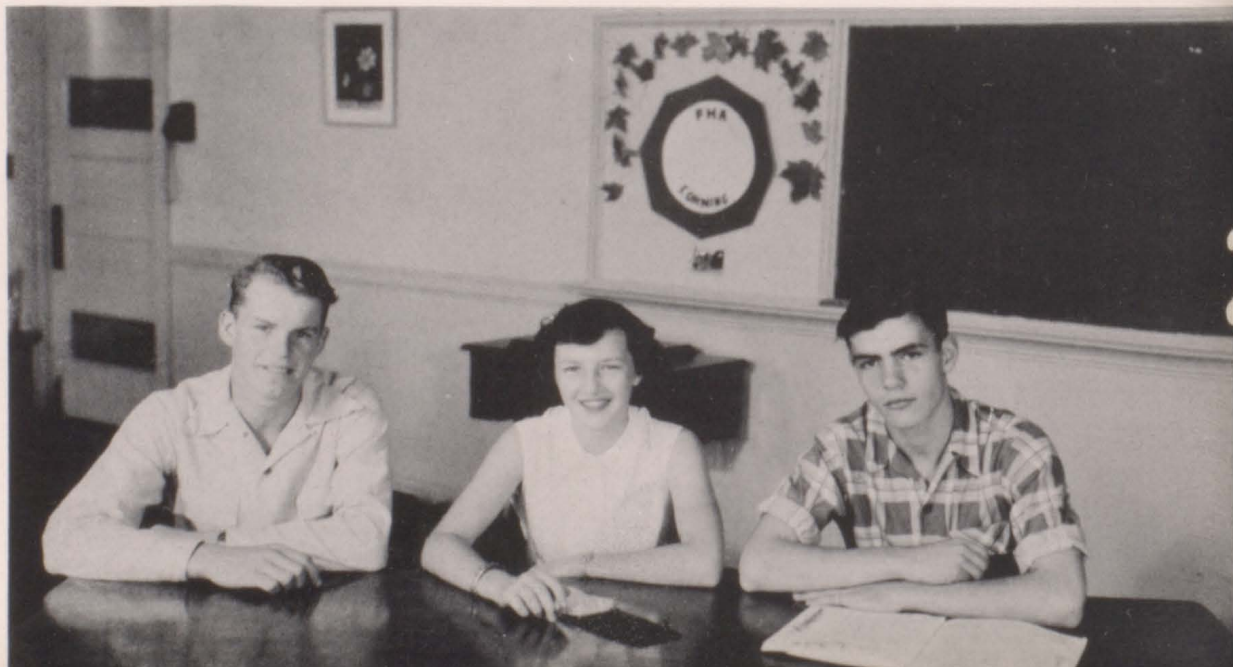
There are sixteen members of the Council with one member representing each home room. A member must have special qualifications including those of leadership, character, a spirit of serving, and good academic ability. All members must average at least a 'C' in their subjects.

Officers for the coming year are elected by the student body in the Spring. 1951-1952 officers were: President, Ed Lawrence; Vice-President, Leon Little; Secretary, Marvis Richardson.

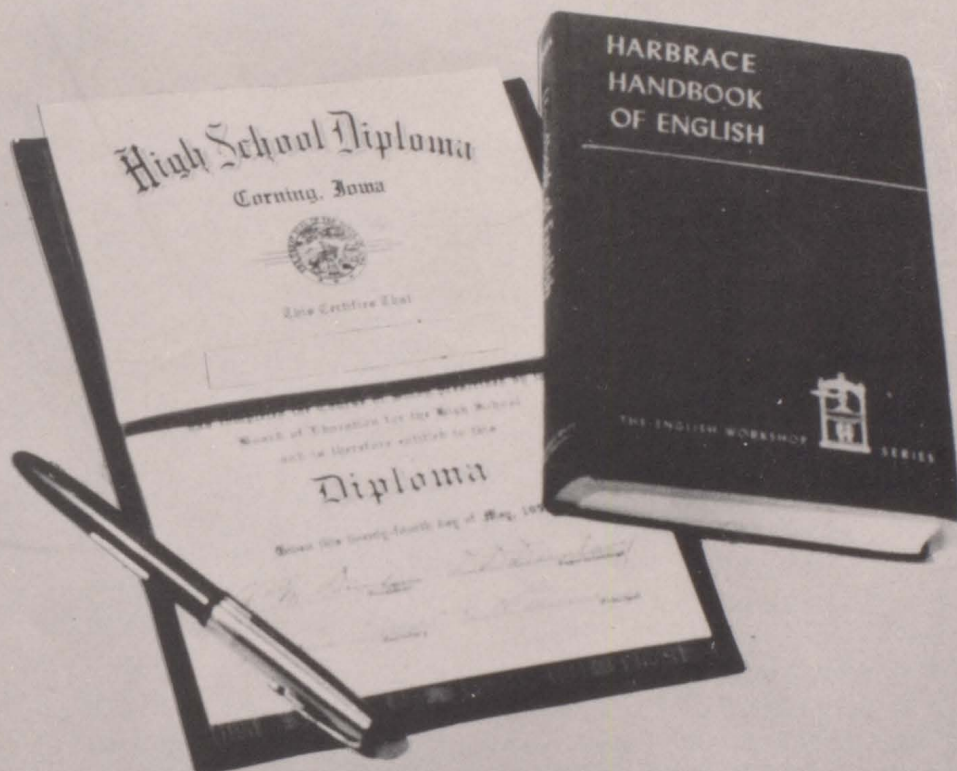
The organization set up and backed the Homecoming activities for the year. It was also responsible for the special Armistice Day program. The group was also represented at the all-state convention held at Ames the earlier part of the year.

The primary objective of the Council, in addition to the above, is to help Corning High in its proper functioning. Members of the Council for the year 1951-1952 who aided in this important work were: Cathryn Antisdel, Richard Bailiff, Leta Chafa, Donna Costello, Cliff Freshour, Jean Gearheart, Gene Havens, Tom Johnson, Ed Lawrence, Leon Little, Darwin Long, Naomi Maeder, Marvis Richardson, Douglas Sickler, Gwen Smyth, June Stillinger, Donna Watts, Kathryn Quinn, Gordon Sickler, Glenn Mayo, and Jack Harvey.

## STUDENT COUNCIL



# CLASSES



## "THROUGH THE YEARS"

The big moment at last did arrive,  
C. H. S. once more did come alive.

This of course was the fall of nineteen hundred and forty-eight,  
When 74 bright Freshmen started out with a clean slate.

Ed L. was voted president of the Freshman Class,  
Each Freshman working hard so he would be sure to pass.

Nursery rhyme characters, suits and ties,  
From now on time sure flies.

Sophomore, well do tell,  
My how those last years Freshmen did swell.

The usual class meeting you'll all remember,  
One that took place way back in September.

Things were upset from there usual plan,  
Pat C. was elected president and proved a girl can.

This year like the rest was bushels of fun,  
Yet all were happy when it was done.

Many things for the Sophomores a happy time did make,  
Dances and parties and a picnic at the lake.

The next year started out and several voices here no more did sing,  
For Bobbie went to Pella, and Dan to Colorado Springs.

Juniors ah ha, were growing up fast,  
"Lavender and Old Lace" was presented with an excellent cast.

How the year did move along,  
The president elected was Darwin Long.

The Jr.-Sr. Prom was one of the chief high lights,  
Planning and working to carry out the Arabian Knights.

Time moved on with a lot of things new,  
And onward moved the Class of '52.

The Class president, Connie A. our basketball star,  
Whom we are all proud of set the Hawkeye Eight records ajar.

"The Bishops Mantle" the Senior class play,  
Was the best presented here in many a day.

For everywhere you look a senior you'll find,  
Whether it be chorus, band or the gridiron line.

Extra curricular activities, yes, but that not all the senior goal,  
You'll find a good many senior names on the honor roll.

The big moments are coming fast,  
Skipday has come and gone at last.

A time each senior will remember for years,  
A gay, a happy time with out tears.

Then came a moment happy, yet sad,  
Graduation, for each Senior lass and lad.

Now the good old day at Corning High are o'er,  
But we'll remember those days for evermore.

RUTH ADAMS "Rufie"

Y-Teens 1, 2, 3, 4, Secretary 4; G. A. A. 2; Pep Club 1, 2, 3, Secretary 3; Annual Staff 3, 4, Co-Editor 4; F. H. A. 1; Band 1, 2, 3, 4; Girls' Glee Club 1, 2, 3, 4; Mixed Chorus 1, 2, 3, 4; Thespians 3, 4; Speech Activities 3, 4; Swing Band 3, 4; Pep Band 1, 2, 4; Small Vocal Groups Sextette 2, Trio 4; Small Instrumental Groups 1, 2, 3, 4; Operetta 2; Korning Kapers 2; Music Soloist 1, 3, 4; All State Chorus 4; State Music Contest 1, 2, 3, 4; Tarkio Festival 1; Cavalcade of Music 2; Drake Relays 1, 2; Junior Class Play 3; One Act Play 3; Honor Roll 1, 2, 3, 4; All School Play 4.

CONRAD AMONS "Connie"

Hi-Y 3, 4, Pres. 4; "C" Club 3, 4; Executive Board of Youth Center 2, 3, 4; Carnival Royalty 3; Football 2; Basketball 1, 2, 3, 4; Track 3; Thespians 3, 4; Speech Activities 3, 4; Class Officer Vice Pres. 3, Pres. 4; Operetta 2; Junior Class Play 3; Senior Class Play 4; Honor Roll 1, 2, 3, 4; All School Play 3; Operators Club 3.



SAMUEL BIXLER "Sam"

Hi-Y 2, 3; F. F. A. 1, 2, 3, 4; Pep Club 4; Annual Staff 4; Boys' Glee Club 1; Operators Club 4.



# SENIOR CLASS



ALICE BOSWELL "Gert"

Y-Teens 2, 3, 4; Pep Club 3; F. H. A. 1, 2, 3; Band 1, 2, 3, 4; Pep Band 1, 2, 3, 4; Cavalcade of Music 2; Drake Relays 2.

IRENE BRESSLER "Jo"

Y-Teens 1, 2; Pep Club 3, 4; Annual Staff 4; Paper Staff 4; F. H. A. 3, 4; Basketball Intramural 4; Girls' Glee Club 1, 2, 3, 4; Mixed Chorus 1, 2; Speech Activities 4; Student Librarian 3; Junior Class Play 3; Honor Roll 3.

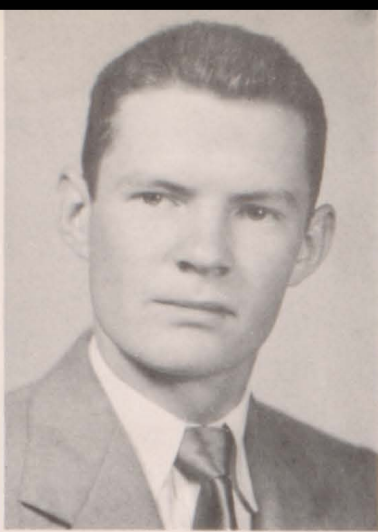


BETTY BROWN "Bet"

Y-Teens 1, 2, 3, 4; F. H. A. 2, 3; Girls' Glee Club 1; Honor Roll 1, 2, 3, 4.

EDDY JOE BUSH "Edd"

Hi-Y 2, 3, 4; F. F. A. 1; Executive Board Youth Center 4; Football 1, 2, 3; Basketball Intramural 2, 4; Thespians 4; Class Officer Sec. -Treas. 2; Boxing 2, 4; Junior Class Play 3; Senior Class Play 4; One Act Play 4.



CAROL JUNE CALKINS "Junie"

Y-Teens 3, 4; G. A. A. 3; Pep Club 4; F. H. A. 1, 2, 3; Band 2, 3; Girls' Glee Club 1; Pep Band 2; State Music Contest 3; Cavalcade of Music 2; Drake Relays 2; Senior Class Play 4; One-act Contest Play 4.

RICHARD LOREN CAROTHERS "Dick"

Hi-Y 2, 3, 4; F. F. A. 1; Football 1; Basketball (Intramural) 1, 4; Band 2, 3, President 3; Boys' Glee Club 3; Mixed Chorus 3; Thespians 4; Pep Band 2, 3; State Music Contest 2, 3; Cavalcade of Music 2; Drake Relays 2; Senior Class Play 4; One-act Contest Play 4.



DONALD CHAFA

Hi-Y 2, 3; "C" Club 4; F. F. A. 1, 2, 3, 4, Reporter 4; Football 3, 4; Basketball (Intramural) 1, 2; Basketball 3, 4; Track 3, 4; Honor Roll 1, 2.



BEVERLY CLAUSSEN "Bev"

Y-Teens 1; G. A. A. 1, 2, 3, 4; Pep Club 1, 2, 3, 4; Annual Staff 3, 4; Paper Staff 4; F. H. A. 1; Basketball (Intramural) 1, 2, 3, 4; Band 2, 3, 4; Speech Activities 1, 3, 4; Pep Band 2, 3, 4; State Music Contest 2, 3, 4; Cavalcade of Music 2; Drake Relays (Music) 2; Honor Roll 1, 2, 3, 4.

PATTY COULTHARD "Pat"

Y-Teens 1, 2, 3, 4; G. A. A. 1, 2, 3, Secretary 2; Pep Club 1, 2, 3, 4, Vice President 4; Annual Staff 3, 4; Paper Staff 4; Basketball (Intramural) 4; Band 1, 2, 3, 4; Girls' Glee Club 1, 2, 4; Mixed Chorus 1; Thespians 3, 4; Speech Activities 3, 4; Class Officer, President 2; Swing Band 1, 2, 4; Pep Band 1, 2, 3, 4; Small Instrumental group 2, 3, 4; Koring Kapers 2; Accompanist 3; State Music Contest 1, 2, 3, 4; Cavalcade of Music 2; Drake Relays (Music) 1, 2; Junior Class Play 3; Senior Class Play 4; One Act Play 3; Honor Roll 1, 2, 3, 4.



JoANNE DAMEWOOD "Jo"

Y-Teens 1, 2, 3, 4; G. A. A. 2, 3; Pep Club 1, 2, 3; Paper Staff 4; Basketball (Intramural) 2, 3, 4; Girls' Glee Club 3.

BONNITA DAVIS "Dave"

Y-Teens 1, 2, 3, 4, Treasurer 4; G. A. A. 2, 3; Pep Club 1, 2, 3; Annual Staff 3, 4; Paper Staff 4; F. H. A. 1; Student Council 2, 3; Executive Board of Youth Center 2, 3, 4, President 4; Basketball (Intramural) 4; Band 1, 2, 3, 4; Girls' Glee Club 1, 2, 3, 4; Mixed Chorus 1, 4; Pep Band 2, 3, 4; Small Vocal Group 3, 4; Small Instrumental Group 2; Cavalcade of Music 2; Drake Relays (Music) 1, 2; Senior Class Play 4; Honor Roll 1, 2, 3, 4; All-School Play 4.





GENEVIEVE A. DOTSON "Gen"

Y-Teens 1, 2, 3, 4; G. A. A. 3; Pep Club 3; Paper Staff 4; F. H. A. 1; Student Council 1; Band 1, 2, 3, 4; Student Council 2; Pep Band 1, 2, 3, 4; State Music Contest 1, 2, 3, 4; Tarkio Festival 1; Cavalcade of Music 2; Drake Relays (Music) 1, 2; Honor Roll 1, 2, 3, 4; Operators Club 1, 2.

JANICE EDWARDS "Jannie"

Y-Teens 2, 3; Pep Club 1, 3; F. H. A. 1, 2, 3, 4; Girls' Glee Club 1, 2, 3; Speech Activities 4; Honor Roll 3.



NORMA FARRIS "Norm"

Y-Teens 1, 3; G. A. A. 3, 4; Pep Club 3, 4; Annual Staff 4; Paper Staff 4; F. H. A. 3; Annual Royalty 4; Basketball (Intramural) 3, 4; Honor Roll 1, 2, 3, 4.

Class Flower: White Carnation  
Class Colors: Maroon and Silver  
Class Motto: "Ambition is the stepping stone to success."



CLIFFORD FRESHOUR "Cliff"

F. F. A. 3, 4; Pep Club 4; Student Council 4; Basketball (Intramural) 4; Operators Club 2, 3, 4, Vice President 3, 4.

VERLEE FUDGE "Fudgie"

Y-Teens 1, 2, 3, 4; F. H. A. 1; Band 2; Girls' Glee Club 2; Pep Band 2; Small Vocal Group 2; Tarkio Festival 1; Cavalcade of Music 2; Drake Relays (Music) 1, 2; Honor Roll 1, 2, 3, 4.



CAROL GASKILL "Wung"

Hi-Y 2, 3, 4; "C" Club 4; F. F. A. 1, 2, 3; Football 1, 2, 3, 4; Basketball (Intramural) 1, 4; Honor Roll 1, 4.

VIRGINIA HIGHT "Gin"

Y-Teens 3; Glee Club 1; Mixed Chorus 1; Class Officer 10; Honor Roll 1, 2, 3, 4.

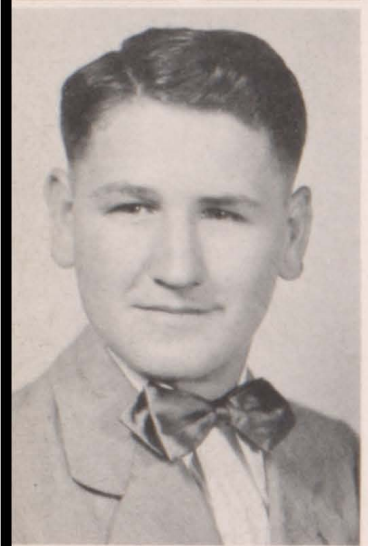


JOAN HOLBROOK "Jody"

G. A. A. 3, 4; Pep Club 3; Annual Staff 3; F. H. A. 1, 2, 3; Band 1, 2, 3; Speech Activities 2, 3, 4; State Music Contest 1, 2, 3; Tarkio Festival 1; Cavalcade of Music 2; Drake Relays (Music) 2; Honor Roll 1, 2, 3, 4.

LELAND INMAN "Tiny"

Football 1; Paper Staff 4.



ROGER JAMES "Jesse"

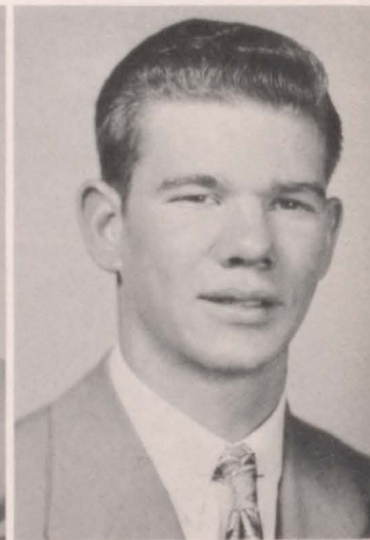
Hi-Y 2, 3; F. F. A. 1, 2, 3, 4; Football 1, 2, 3; Basketball (Intramural) 1, 3, 4; Track 2; Boxing 2, 3, 4; Operators Club 3, 4.

PAT KELLY "Pat"

Y-Teens 3, 4; F. H. A. 1; Honor Roll 1, 2, 4.

ED KENNEDY "Irv"

F. F. A. 1, 3, 4; Pep Club 4; Basketball (Intramural) 1, 2, 3, 4; Speech Activities 4.



FREDA KINGERY "Freddie"

F. H. A. 1, 2, 4; Band 1, 2; Glee Club 2; Small Instrumental Group 1; Korning Kapers 2; Music Soloists 1; State Music Contest 1, 2; Tarkio Festival 1; Drake Relays (Music) 1, 2; Honor Roll 1, 2.

SUSAN LAUBER "Snuzie"

Y-Teens 1, 2, 3, 4, Vice Pres. 2; G. A. A. 2, 3; Pep Club 3, 4, Sec. 4; Paper Staff 1, 4, Editor 4; Student Council 2; Annual Royalty 1, 3; Basketball Royalty 2; Band 2, 3, 4; Girls' Glee Club 1, 2, 3, 4; Contest Play 3; National Honor Society 3, 4; Pep Band 3, 4; State Music Contest 1, 2, 3; Cavalcade of Music 2; Drake Relays (Music) 1, 2; Honor Roll 1, 2, 3, 4.



ED LAWRENCE "Milktoast"

Hi-Y 2, 3, 4, Sec. 3, 4; "C" Club 1, 2, 3, 4, Sec. 3, 4, Vice Pres. 4; Annual Staff 3; Student Council 3, 4, Vice Pres. 3, Pres. 4; Executive Board of Youth Center 2; Carnival Royalty 2; Football 1, 2, 3, 4; Basketball 1, 2, 3, 4; Track 2, 3, 4; Baseball 1; Contest Play 3; Speech Activities 3, 4; Class Officer Pres. 1; National Honor Society 3, 4; One Act Play 3; Honor Roll 1, 2, 3, 4; Operators Club 3.

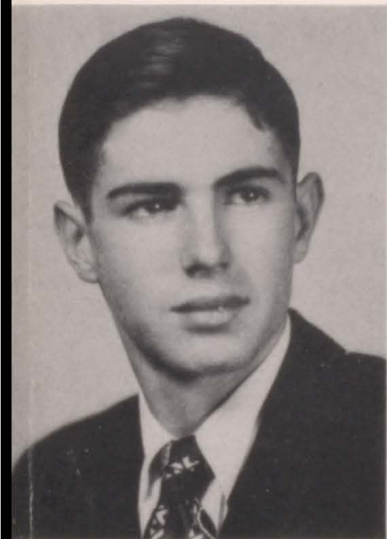


DARWIN LONG "Moose"

Hi-Y 2, 3, 4; "C" Club 1, 2, 3, 4; Student Council 2, 3, 4; Football 1, 2, 3, 4; Basketball (Intramural) 1, 2, 3, 4; Track 2, 3, 4; Baseball 1; Thespians 3, 4; Contest Play 3; Speech Activities 3, 4; Class Officer Pres. 3; National Honor Society 3, 4; Honor Roll 1, 2, 3, 4; Operators Club 2, 3, 4.

RUTH LONG "Ruthie"

Y-Teens 4; Paper Staff 4; Girls' Glee Club 4; Mixed Chorus 4; Speech Activities 4; Student Librarian 3; Senior Class Play 4.



DONALD LOVELY "Monk"

F. F. A. 1, 2, 3, 4; Football 3, 4; Basketball (Intramural) 1; Basketball 4; Honor Roll 1, 2, 4; Operators Club 1.

ARTHUR McCLELLAND "Sleepy"

Hi-Y 2, 3, 4; "C" Club 3, 4, Pres. 4; Football 1, 2, 3, 4; Basketball 1, 2, 3, 4; Track 2, 3.



BARBARA NELSON "Barb"

Y-Teens 4; G. A. A. 3; Paper Staff 4; F. H. A. 1, 2; Basketball (Intramural) 4; Band 1.

LARRY NELSON "Harry"

"C" Club 4; F. F. A. 1, 2, 3, 4, Treas. 3; Football 3, 4; Basketball 4; Basketball (Intramural) 2, 3.



BERNADINE O'CONNELL "Peanuts"

G. A. A. 3, 4; Pep Club 1, 2, 3; F. H. A. 1, 2, 3; Basketball (Intramural) 3, 4; Girls' Glee Club 1, 2, 3, 4; Mixed Chorus 1, 2; Music Soloists 3; State Music Contest 1, 2, 3; Tarkio Festival 1.

BEVERLY PENN "Bev"

Y-Teens 1, 2, 3, 4; G. A. A. 1; Pep Club 1, 3, Pres. 3; F. H. A. 1, 2, 3; Girls' Glee Club 1; Band 1, 2, 3, 4; Thespians 3, 4; Contest Play 3; Speech Activities 3, 4; Class Officer Sec. 3; Small Instrumental Group 1, 2, 3, 4; Pep Band 1, 2, 3, 4; State Music Contest 1, 2, 3, 4; Tarkio Festival 1; Cavalcade of Music 2; Drake Relays (Music) 1, 2; Junior Class Play 3; One-Act Play 3.



JOYCE PIERCY "Joy"

Paper Staff 4; F. H. A. 3, 4.

DELORES RICHIE "Face"

Y-Teens 1, 2, 3, 4, Pres. 4; G. A. A. 1, 2, 3; Pep Club 1, 2, 3, 4; F. H. A. Vice Pres. 1; Carnival Queen 3; Homecoming Queen 4; Basketball (Intramural) 4; Band 1, 2, 3, 4; Girls' Glee Club 1, 2, 3, 4; Mixed Chorus 4; Class Officer Sec. 4; Swing Band 3, 4; Pep Band 1, 2, 3, 4; Small Instrumental Group 3, 4; State Music Contest 1, 2, 3, 4; Tarkio Festival 1; Drake Relays (Music) 1, 2; Honor Roll 1, 2, 3, 4.

HELEN RUMLEY "Rum"

Y-Teens 1, 2, 3; G. A. A. 1, 2, 3, 4; Paper Staff 4; Basketball (Intramural) 1, 2, 3, 4; Band 1, 2; Girls' Glee Club 1, 2; Speech Activities 3, 4; Student Librarian 4; Honor Roll 3, 4; Operators Club 2, 3.

JACK RYAN

F. F. A. 1, 2, 3, 4, Vice Pres. 3, Reporter 4; Paper Staff 4; Basketball (Intramural) 1, 2, 3, 4; Speech Activities 4; Boxing 3; Honor Roll 3, 4; Operators Club 2, 3, 4, Treas. 4.

BARBARA SELDERS "Barb"

Y-Teens 1, 2, 3, 4; Pep Club 3; F. H. A. 1, 2, 3; Annual Royalty 3; Girls' Glee Club 1, 2; State Music Contest 1, 2; Honor Roll 1, 2, 3, 4.



GWENDOLYN SMYTH "Gwen"

Y-Teens 1, 2, 3, 4; G. A. A. 1, 2, 3; Pep Club 3, 4; Annual Staff 3, 4; F. H. A. 1; Student Council 4; Homecoming Royalty 2; Band 1, 2, 3, 4; Girls' Glee Club 1, 2, 3, 4; Mixed Chorus 3, 4; Speech Activities 4; Cheerleader 3, 4; Pep Band 2, 4; Small Vocal Group 3, 4; Small Instrumental Group 3, 4; Music Soloists 3, 4; All-State Chorus 3, All-State Band 4; State Music Contest 1, 2, 3, 4; Cavalcade of Music 2; Drake Relays (Music) 1, 2; Honor Roll 1, 2, 3, 4.

RUSSELL STEELE "Russ"

Hi-Y 3; F. F. A. 1, 3, 4; Basketball (Intramural) 1, 2, 3, 4; Speech Activities 4.



MARILYN STRAIT "Jean"

Y-Teens 1, 2, 3, 4; F. H. A. 1, 2, 3; Honor Roll 1, 2, 3, 4.



PAUL SULLIVAN "Sully"

"C" Club 1, 2, 3, 4; F. F. A. 1, 2, 3; Football 1, 2, 3; Track 2, 3, 4; Speech 3, 4; Junior Class Play 3.

JOAN TALTY "Jo"

G. A. A. 2, 3, Sec. 3; Pep Club 1, 2, 3, 4; Annual Staff 4, Co-Editor 4; Paper Staff 4; F. H. A. 1; Student Council 1; Band 4; Girls' Glee Club 1, 2, 3, 4; Mixed Chorus 4; State Music Contest 3, 4; Senior Class Play 4; Honor Roll 1, 2, 3, 4.

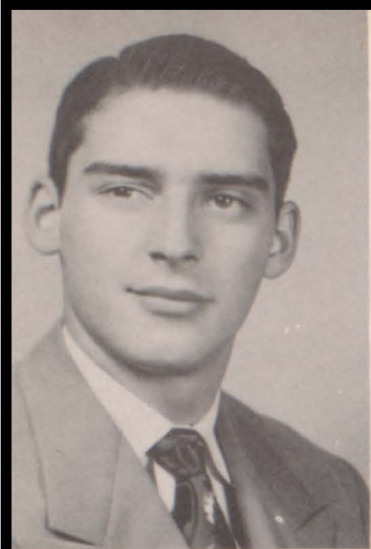


LOLA THOMPSON "Muscles"

Y-Teens 3; F. H. A. 4; Basketball 1; Girls' Glee Club 1, 2; Class Officer 2; One Act Play 2.

RAYMOND TOWNSEND "Ray"

Hi-Y 4; Football 4; Basketball (Intramural) 4; Boys' Glee Club 1, 2; Mixed Chorus 1; Small Vocal Group 1, 2; Honor Roll 1, 2.

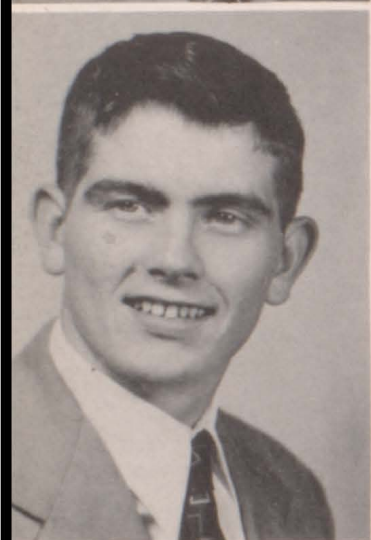


HOWARD VAN PELT "Howie"

Hi-Y 2, 3, 4, Vice Pres. 4; "C" Club 2, 3, 4, Vice Pres. 4; Student Council 2; Football 3; Basketball 1, 2; Track 2, 3; Boys' Glee Club 1, 2; Mixed Chorus 1, 2; Thespians 3, 4; Contest Play 2, 3, 4; Speech Activities 2, 3, 4; Class Officer Sec. -Treas. 1, Treas. 3, 4; Small Vocal Groups 2; Korning Kapers 2; State Music Contest 1, 2, 4; Tarkio Festival 1; Junior Class Play 3; Senior Class Play 4; Honor Roll 1, 2, 3, 4; All School Play 4.

RONALD WARRICK "Tom"

Hi-Y 4; F. F. A. 2; Pep Club 4; Football 1, 2, Basketball 1, 2, 3, 4.



LARRY WATERS "Dairyman"

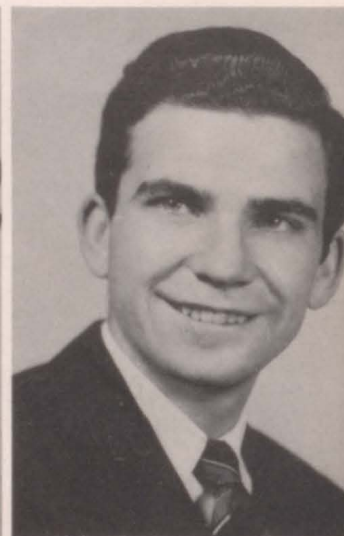
"C" Club 3, 4; Annual Staff 4; Executive Board of Youth Center 4; Football 1, 2, 3, 4; Basketball (Intramural) 1, 3; Basketball 2, 4; Thespians 4; Speech Activities 3; Class Officer Vice Pres. 4; Boxing 2, 3, 4; Junior Class Play 3; Senior Class Play 4.

DONNA WATTS "Donnie"

Y-Teens 1, 2, 3, 4; G. A. A. 1, 2, 3; Pep Club 1, 2, 3, 4; Annual Staff 3, 4; Paper Staff 1, 4; Homecoming Royalty 4; Basketball Royalty 2, 3; Basketball (Intramural) 4; Band 1, 2, 3, 4; Girls' Glee Club 1, 2, 3, 4; Mixed Chorus 1, 2, 3, 4; Thespians 4; Volleyball 4; Cheerleader 2, 3, 4; Swing Band 2, 3; Pep Band 1; Small Vocal Groups 1, 2, 3, 4; Small Instrumental Groups 1, 2, 3, 4; Operetta 2; Accompanist 1, 2, 3, 4; Music Soloist 1, 2, 3, 4; All State Chorus 1, 3, 4; State Music Contest 1, 2, 3, 4; Tarkio Festival 1; Cavalcade of Music 2; Drake Relays (Music) 1, 2; Junior Class Play 3; Senior Class Play 4; Honor Roll 1, 2, 3, 4; Student Council 4; Korning Kapers 2.

RUIELLE G. WESTLAKE "Pat"

Hi-Y 3; F. F. A. 1, 2, 4; Basketball (Intramural) 1.



NADINE WILDMAN "Wildwoman"

Y-Teens 1, 2, 3, 4; G. A. A. 1, 2, 3; Pep Club 3, 4; Annual Staff 3; Paper Staff 1, 4; F. H. A. 1, 2; Band 1, 2, 3, 4; Glee Club 1, 2, 3, 4; Mixed Chorus 3, 4; Thespians 4; Speech Activities 1, 2, 3, 4; Swing Band 2, 3, 4; Pep Band 1, 2, 3, 4; Small Vocal Groups 3; Small Instrumental Groups 1, 2, 3, 4; Operetta 2; Korning Kapers 2; Accompanist 3; Music Soloist 1, 2, 3, 4; All State Chorus 2; Tarkio Festival 1; State Music Contest 1, 2, 3, 4; Cavalcade of Music 2; Drake Relays (Music) 1, 2; Junior Class Play 3; Senior Class Play 4; Honor Roll 1, 2, 3, 4; Operators Club 2, 3, 4, Pres. 4; All School Play 4.



NELL WILMARTH "Willy"

Hi-Y 2, 3; F. F. A. 1, 2, 3, 4.

# JUNIOR CLASS



Cathryn  
Antisdel

Carol  
Bixler

Cheryll  
Bixler



Sharon  
Campbell



Jean  
Boelling

Carlton  
Bohanon



Nadine  
Carr



Richard  
Bohanon



Carmen  
Clement



Wayne  
Brown

Weldon  
Cooney

Ila  
David

Marvin  
Dhone



Barbara  
Burgan

Darwin  
Dotson

Delores  
Dozier

Galen  
Drennan



# JUNIOR CLASS

Work at the stand!  
 Play in the band!  
 Choose your class ring!  
 Come on let's sing!

Marcene  
 Eggen

These phrases belong to the C. H. S. Junior Class. There are 85 (?) ambitious students that constitute this class. Every year the Juniors have charge of the food stands at the football and basketball games. There are such jobs as cooking, selling and the everlasting task of cleaning up.

With all the school spirit there has to be an outlet so they planned a pep assembly. It must have been good because we won the game.

Five fellows had and made the first team in football. They were Phil Sturdevant, Don Riegel, Rich Bohanan, Richard Gibson, and Keith Spring. Several outstanding Juniors in the music field are: Don Riegel, Barbara Burgan, Janice Gaskill, Doyle Perry, Darwin Dotson, Alvus West, Carmen Clement, Naomi Maeder, and Jo Schafroth. Almost every Junior exerts his efforts in one or more organizations. It would be hard to get along without them.

About January they get excited and begin making plans for Junior-Senior Prom. There's plenty of work to it too.

All work and no play would make Junior a dull student so after the work part of the Prom is over they let go and really have fun that night. Each spring there's a Junior Class play. Sure, it's work but there's nothing quite like being in a play. It's wonderful!

Just so everyone will know they're almost Seniors they purchase class rings.

Of course, the class couldn't get along without the officers, Dick Gibson-President, Keith Riley-Vice President, Betty Westlake-Secretary, Donald Riegel-Treasurer and then their ever faithful sponsors, Miss Green, Miss Gappa, Mr. Doyle and Mr. Helmers.

To the graduating class of 1953 we want to say, "we're proud of your record."

Twylla  
 Haley

Carolyn  
 Harrison

Richard  
 Harrison

Carolyn  
 Harvey

Fred  
 Hayes

Jerry  
 Freshour

Boyd  
 Fudge

Marvin  
 Fuller

Janice  
 Gaskill

Janice  
 Gearheart

Dick  
 Gentle

Richard  
 Gibson

Deloris  
 Haley



# JUNIOR CLASS



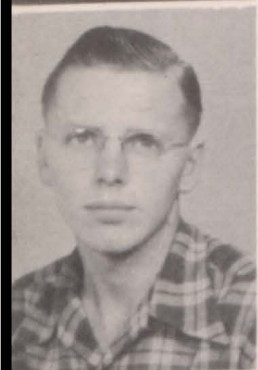
Ralph  
Hickman

Marilyn  
Hight

Janice  
Hogan



Evelyn  
Kirkpatrick



Dale  
Jacobs

Darl  
Johnson



Charlotte  
Kneller



Dorothy  
Johnson

Thomas  
Johnson

Dwane  
Konecne



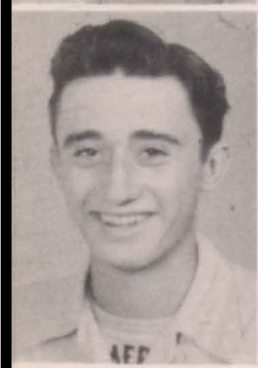
Joyce  
Johnston

Stanley  
Johnston

Mary  
Lawrence

Janis  
Lindhammer

Leon  
Little



David  
King

Ted  
Kinne

Doris  
Lundquist

Naomi  
Maeder

Lotta  
McMurray



# JUNIOR CLASS



Patricia  
Means

Doyle  
Perry



Deloris  
Peterson



Roswell  
Peterson



Cletus  
Mercier



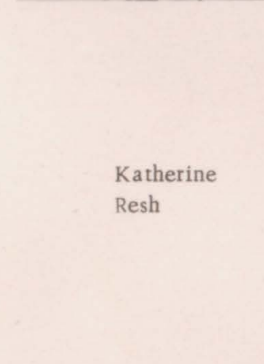
Shirley  
Preston



Kathryn  
Quinn



Shirley  
Miller



Katherine  
Resh



Doris  
Moore



Carolyn  
Murdock



Marilyn  
Neill



Claire  
Richey



Dale  
Odell



Margie  
Olive



Lorraine  
Paul



Donald  
Riegel



# JUNIOR CLASS



Iola  
Riegel



Keith  
Riley



Richard  
Rodman



Keith  
Spring



Earl  
Russel



JoAnne  
Schafroth



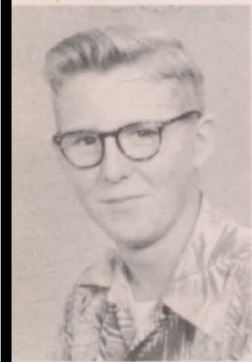
June  
Stillinger



Bob  
Scott



Phillip  
Sturdevant



Gordon  
Sickler

Edward  
Sullivan



Shirley  
Thomas



Buddy  
Vernon



Donald  
Simmons

Erma  
West



Alvus  
West



Betty  
Westlake





Fred Arbuckle	Arnold Beath	Lorene Bixler	Marilyn Bohanan	Ronald Brenton	Ramona Carter	Dean Curtis
Richard Bailiff	Charlotte Berscheid	Darlene Boham	Bernice Boswell	Larry Carmichael	Hazel Case	Gene Dillon



Leroy Dotson



Gary Easterlie



Billy Farris

Phylis Fishell



Verlee Gay

Jean Gearheart

Joann Goldsmith

Earl Hall

Frances Harvey



Sally Hatton

Gene Havens

Norvell Houck

Colleen Inman

Harry Janky

Jerry Keever

Percy Keith

Jack Hill

Glenn Huntington

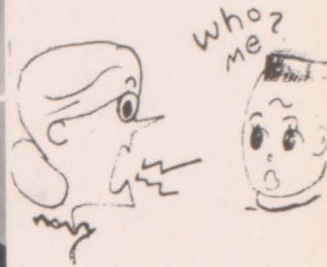
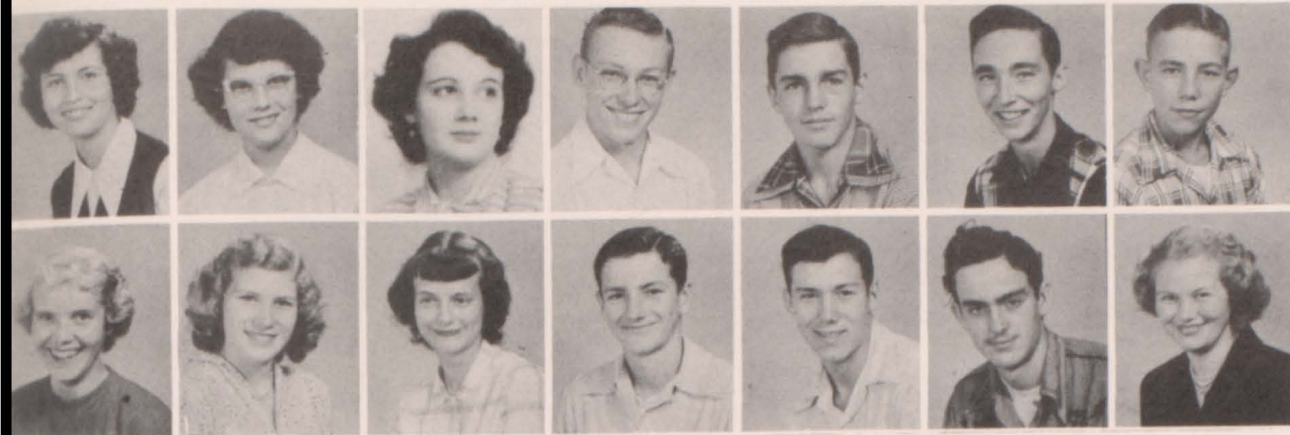
Betty Janky

Gary Johnson

Violet Johnson

Myron Kempton





Connie Kinne	Eva Knerr	Janet Lawrence	Stanley Maas	Glenn Mayo	Bill McQuillan	Richard Mosier
Betty Kirkpatrick	Ernestine Lawrence	Karen Lines	Duane Mains	Allan McManis	Paul Meddars	Verla Mosman

The Freshmen are new,  
 The Juniors plan the "prom",  
 The Seniors will soon graduate  
 But alas, alas,  
 The first of the latter is the Sophomore Class

Even though you don't hear too much about them, their class has a lot of "something." Their star football players were Harold "Watermelon" Townsend and Glenn Mayo. One of their outstanding musicians is Betty Janky. Marvis Richardson is the secretary of the Student Council. Here's wishing the class the best of luck in their next two years.

Deloris Sturdevant	Lonnie Timmerman	Joan Triplett	Mildred Weeks	Kent Wever	Darlene Wilmarth	Ronald Rubin
Marilyn Thomas	Harold Townsend	Wayne Walfrod	Bill West	Bobby Wilkinson	Melvin Winston	



Billy Miller  
 Donna Nolte  
 Beverly O'Reilly  
 Junior Piercy  
 Ellen Preston  
 Ellen Quinn  
 Ed Reed  
 Marvis Richardson  
 Ray Roberts





Marie  
Badgett  
  
Paul  
Bauer

Donald  
Baumann  
  
Carol  
Beemer

Jim  
Biggar  
  
Barbara  
Boelling

Grace  
Briggs  
  
Marjorie  
Briggs

Daryl  
Calkins  
  
Leta  
Chafa

Ruby  
Cooper  
  
Donna  
Castillo



Anita  
Cullen



Jimmy  
Biggar

Sam  
Damewood



Denny  
Edwards

Patricia  
Gebbie

Phyllis  
Gentle



Keith  
Groff

Shirley  
Haley

Connie  
Hall



Bob  
Hansen

Donna  
Hardisty

David  
Harvey

Helen  
Jacobs

Merle  
Jardening

Glenn  
Johnson

Jean  
Kimball

Jack  
Harvey

Helen  
Holbrook

Fred  
James

Ella  
Johannes

Pat  
Jensen

Joyce  
Kirkpatrick

The Freshman class entered the Corning High School door on September 3, 1951. It was a scared class at first but as the days passed they became one of us. The Freshmen were officially initiated into high school Friday, September 21. It was a bunch of babies that attended school that day and it was a bunch of tired students that went home that night.

While going to school the Freshmen have joined several clubs that have been made available to them through the school program. Some of these are Y-Teens, Jr. Hi-Y, G.A.A., F.A.A., Pep Club and F.H.A. There are many Freshmen leading in these organizations.

The class officers this year are; President-Helen Holbrook, Vice President-Bob Hansen, Secretary-Treasurer-Leta Chafa, Reporter-Jean Kimball.





Elenor Kingery    Mary Lacy    Larry Lenz    Ray McMurray    Ruby Nelson    Gary Norcross  
 Jack Kretzinger    Phil Lawrance    John Lovely    Norman Naven    Marilyn Nelson    Shirley Penn



Dorothy Pennington



Phyllis Pennington

Conie Preston

Peggy Resh

Donna Rhoades

Janice Ritnor

George Rogers

Harley Rogers

Jerry Russell

David Schaforth

Paulene Wilmarth



Class Sponsor  
Miss Kazebeer



Class Sponsor  
Mr. Currie

CLASS OFFICERS: President, Helen Holbrook; Vice-President, Bob Hansen; Secretary-Treasurer, Leta Chafa; Reporter, Jean Kimball.

Glenn Scott    Elizabeth Sherlin    Cleo Smith    Alice Rae Thomas    Francis Tranbarger    Eddie West  
 Elnora Selby    Doug Sickler    Dick Stanley    Robert Thomas    Tommy Waters    Jerry Westlake





## GUIDANCE



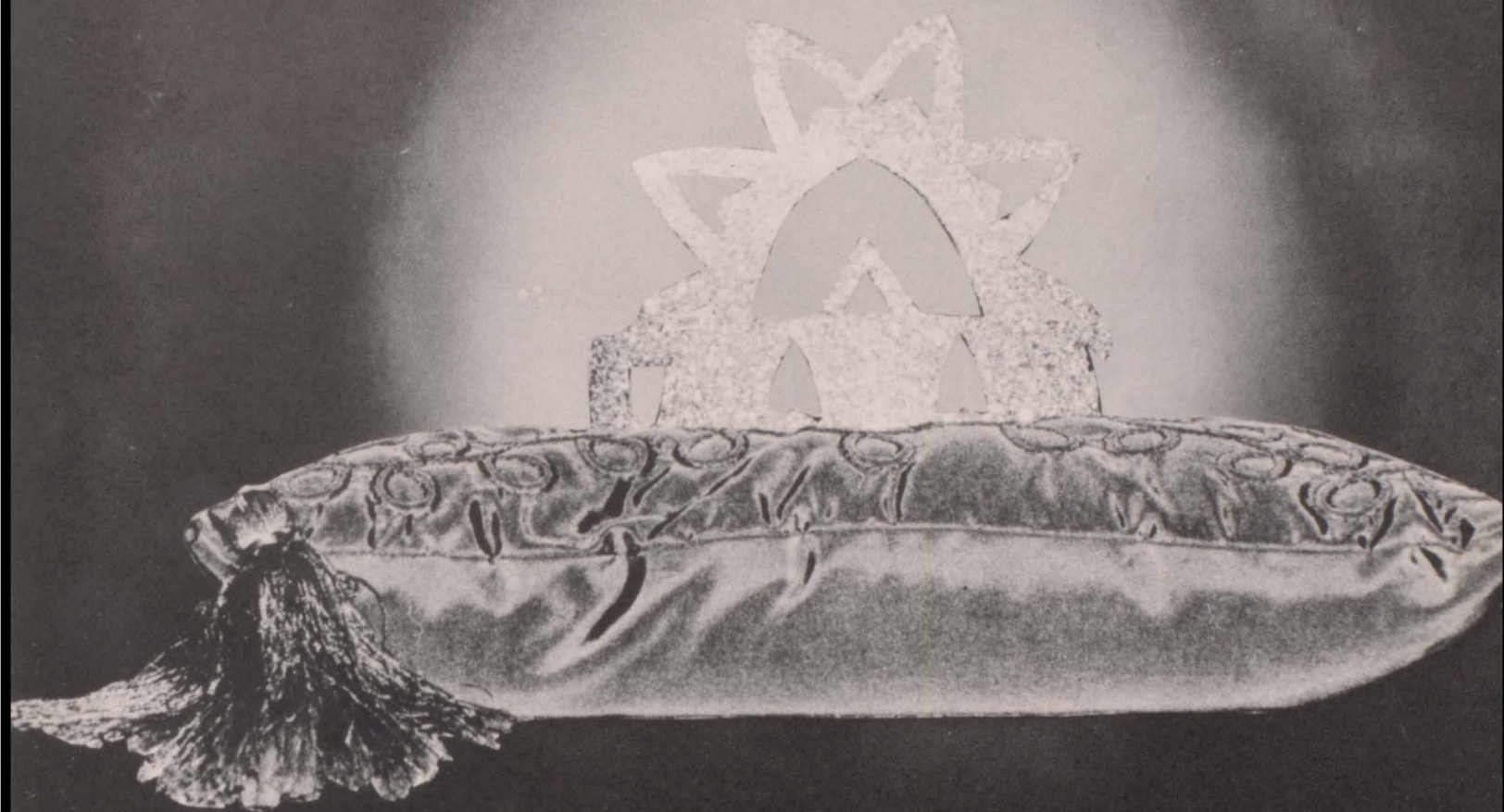
The Guidance Department of our school is very new and is directed this year by Mr. Traxler.

The Seniors especially find much help in this department because of the college catalogs and vocational help Mr. Traxler gives. When the college representatives come to our school the Seniors are given a chance to have an interview with them and therefore they can learn about different schools and choose their school or vocation with knowledge and understanding.

The Juniors are given an opportunity to take the Kuder Preference Test so they can tell definitely where their interests lie.

Mr. Traxler is available to all students at all times for counselling.





# RAIDER ROYALTY



Donna



Charlotte



Delores

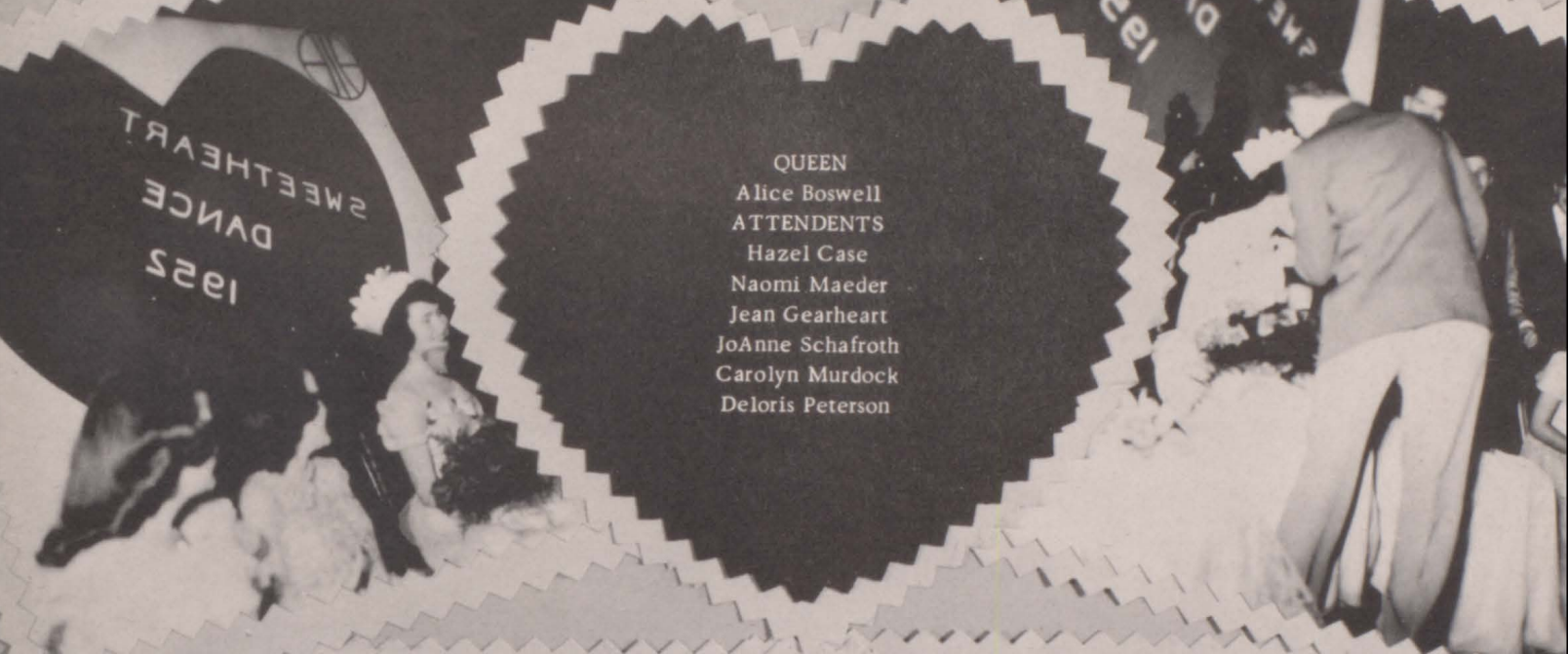
Hazel

Leta

**HOMECOMING**

**QUEEN**





QUEEN  
Alice Boswell  
ATTENDENTS  
Hazel Case  
Naomi Maeder  
Jean Gearheart  
JoAnne Schafroth  
Carolyn Murdock  
Deloris Peterson





MISS JANICE LINDHAMMER 1952 RED RAIDER BEAUTY QUEEN

. . . was chosen from a field of four Corning beauties by Gordon Gammack,  
news paper columnist.

Miss Lindhammer reigned over the 1952 Yearbook Dance.



# WHO'S WHO

## BIGGEST WOLF

Bob Hansen  
Glenn Mayo  
Bob Scott  
Edd Bush

## BIGGEST CHASER

Liz Sherlin  
Karen Lines  
Cheryl Bixler  
Gwen Smyth

## FANCIEST DUDS

Girl	Boy
Anita Cullen	Doug Sickler
Jean Gearheart	Jerry Keever
Janice Lindhammer	Bud Vernon
Joan Talty	Howard Van Pelt

## NEATEST PERSON

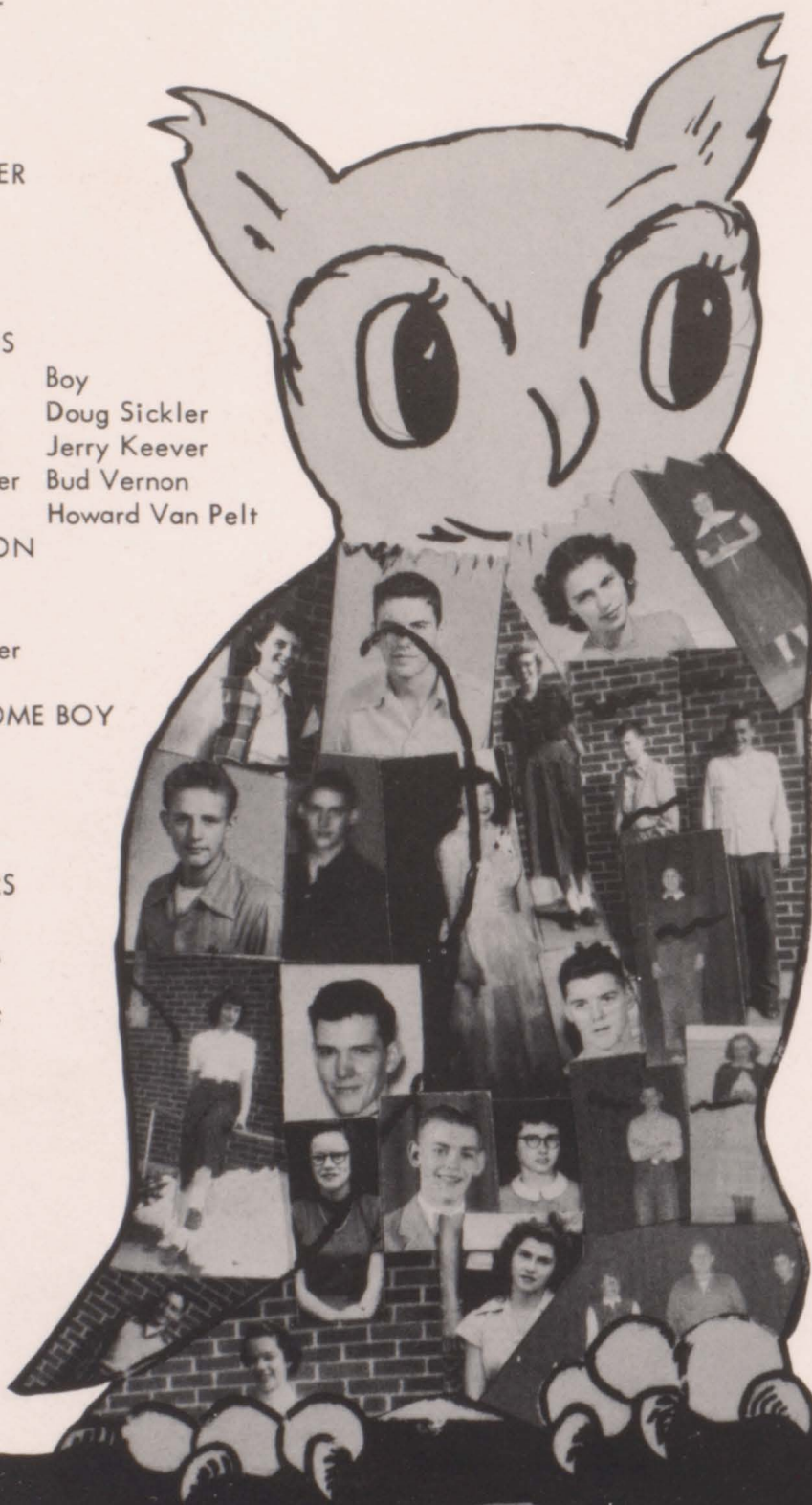
Leta Chafa  
Hazel Case  
Janice Lindhammer  
Connie Amons

## MOST HANDSOME BOY

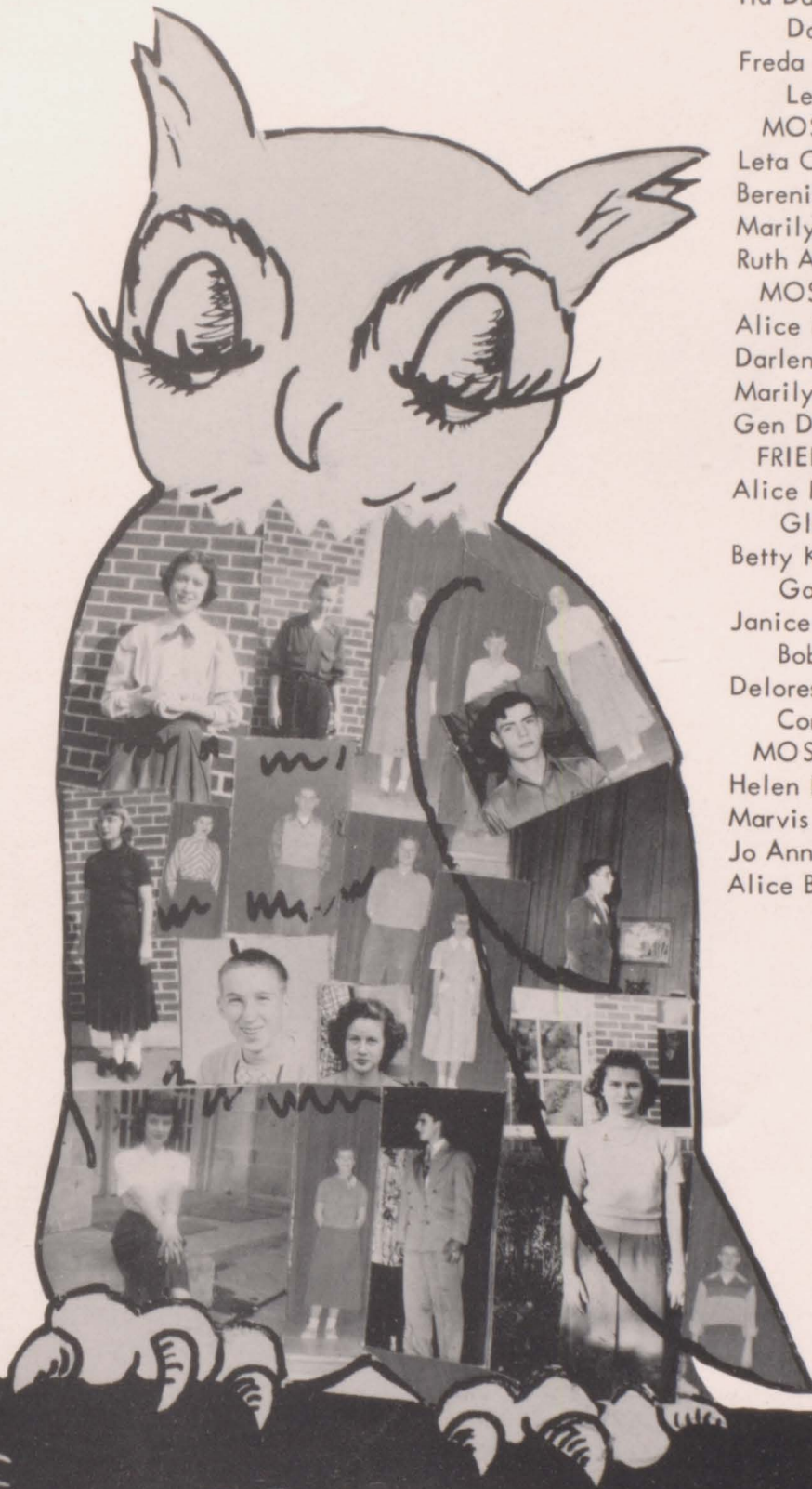
Doug Sickler  
Glenn Huntington  
Phil Sturdevant  
Ed Lawrence

## LOCKER LOVERS

Connie Hall  
Robert Thomas  
Darlene Boham  
Richard Bailiff



# WHO'S WHO



Ila David  
Dale Jacobs  
Freda Kingery  
Leland Inman

## MOST LIKELY TO SUCCEED

Leta Chafa - Don Bauman  
Berenice Boswell - Glenn Mayo  
Marilyn Neil - Richard Gibson  
Ruth Adams - Ed Lawrence

## MOST GRAY MATTER

Alice Rae Thomas  
Darlene Boham  
Marilyn Neil  
Gen Dotson

## FRIENDLIEST

Alice Rae Thomas  
Glenn Johnson  
Betty Kirkpatrick  
Gary Easterlie

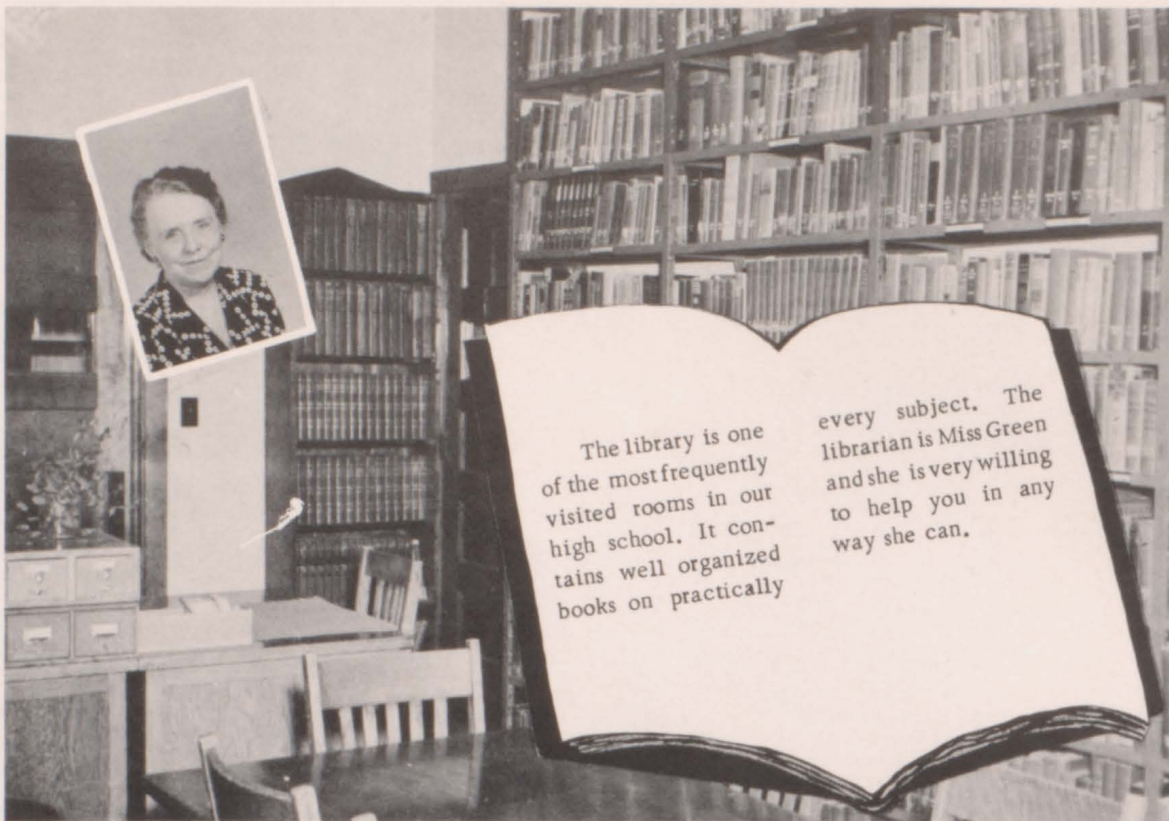
Janice Hogan  
Bob Scott

Delores Richie

Connie Amons

## MOST BEAUTIFUL GIRL

Helen Holbrook  
Marvis Richardson  
Jo Anne Schafroth  
Alice Boswell



The library is one of the most frequently visited rooms in our high school. It contains well organized books on practically

every subject. The librarian is Miss Green and she is very willing to help you in any way she can.

## Library

Miss Green has twelve student assistants. They are: Robert Thomas, Maurice Sullivan, Glen Johnson, Lotta McMurray, Elnora Selby, Helen Holbrook, Helen Rumley, Ruby June Nelson, Patricia Jensen, Marilyn Nelson, Liz Sherlin, and Marie Badgett.







ORGANIZATIONS

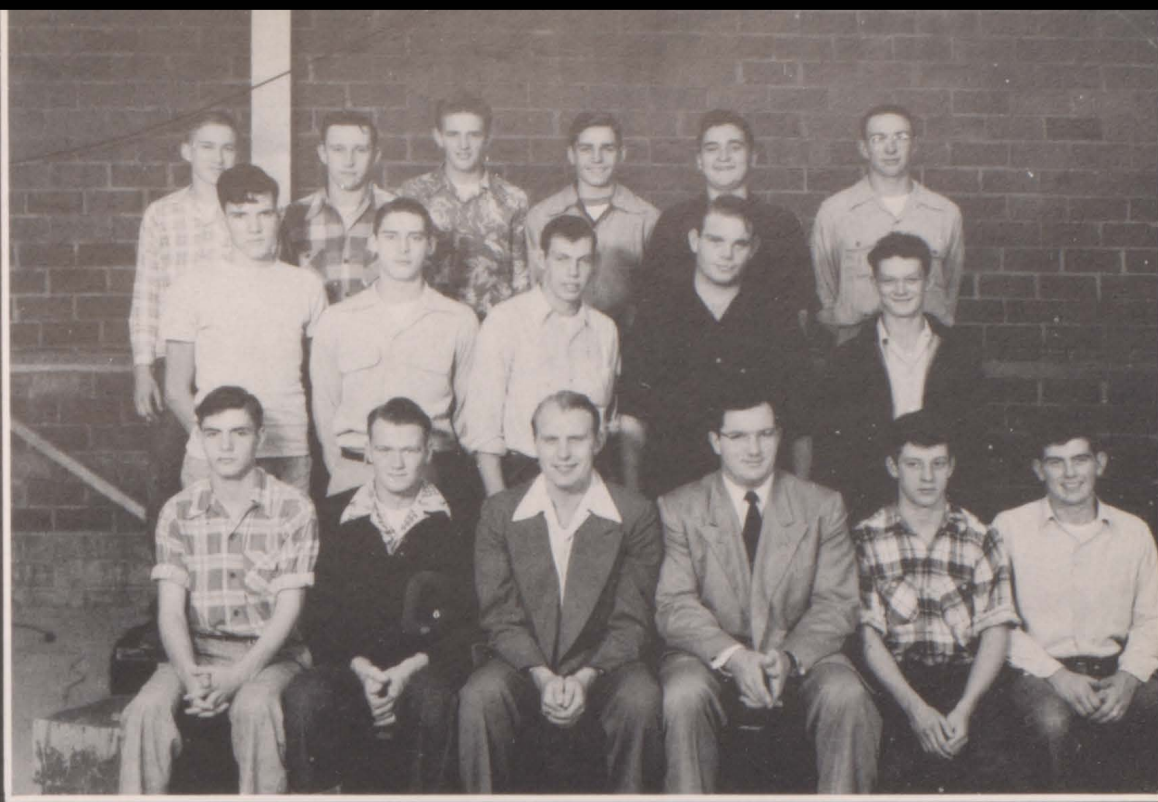
# THE SMOKE SIGNAL



Editor . . . . . Susan Lauber  
 Managing Editor . . . . . Gen Dotson  
 Circulation Managers . . . . . Joan Talty  
 . . . . . Pat Coulthard  
 Feature Editors . . . . . Helen Rumley  
 . . . . . JoAnn Damewood  
 . . . . . Nadine Wildman  
 Sports Editor . . . . . Norma Farris  
 Music Editor . . . . . Donna Watts  
 Poetry Editor . . . . . Beverly Claussen  
 Alumni Editor . . . . . Leland Inman  
 Corning Profile . . . . . Ruth Long  
 Calendar of Events . . . . . Irene Bressler  
 Student Opinion . . . . . Barbara Nelson  
 Art Editor . . . . . Bonnita Davis  
 Proofreaders . . . . . Nadine Carr  
 . . . . . Joyce Piercy  
 Reporters . . . . . Betty Kirkpatrick  
 . . . . . Delores Richie, Betty Westlake  
 . . . . . John Lovely, Jack Ryan  
 . . . . . Kathryn Quinn, Connie Wild  
 . . . . . Carolyn Posten, Bernard Coulthard  
 . . . . . Bob Scott, Cathryn Antisdal

Last spring a few ambitious Juniors registered for Senior Literature. When school opened they went to all their classes and when it came to 6th period they met Miss Gorman, their new teacher. They weren't sure what Senior Literature consisted of, but soon learned their job was to get the school paper out every two weeks. The first few weeks were a little rugged but by the time their third copy came out things were running smoothly. One of their first steps was to change the name from "Red Raider" to "The Smoke Signal".

To their successors next year they say "Good luck."



OFFICERS

President . . . . .	Art McClelland
Vice-President . . . . .	Ed Lawrence
Secretary-Treasurer . . . . .	Phil Sturdevant
Reporter . . . . .	Don Riegel

MEMBERS

Ed Lawrence	Don Riegel
Keith Spring	Dick Gentle
Art McClelland	Phil Sturdevant
Larry Waters	Glenn Mayo
Conrad Ammons	Carol Gaskill
Howard Van Pelt	Richard Bohanan
Paul Sullivan	Darwin Long
	Harold Townsend

"C" CLUB

# JUNIOR HI-Y

Once upon a time there were twenty-seven little boys, or rather, big boys (for after all they were Freshmen and Sophomores), who wanted to organize a club that would be an inspiration to Corning High School. It was decided to have a Junior Hi-Y which would be a model of the Senior Hi-Y. With the help of Mr. Howard Larimer, their sponsor, the club staged a very successful talent show November 13, 1951, So you can see the big Junior Hi-Y boys really are promoting a very active organization. Later this year the Junior Hi-Y will sponsor a boxing show in conjunction with the Senior organization. With its capable sponsor and enthusiastic members it is hoped that the club will go on happily as the small but important brother to the Senior Hi-Y.





The Senior Hi-Y group is composed of twenty-five junior and senior boys. Their purpose is "to create, extend and maintain Christian character throughout the community."

This group has a basketball squad and boxing to represent them in sports. One of this year's big projects is the carnival.

The sponsor of the group is Mr. Howard Traxler.



The light through yonder window breaks.  
It is the East, and Juliet is the sun.

Oh, that this too, too solid flesh should thaw,  
melt and resolve itself into a dew.

Et tu, Brute!  
Then fall, Caesar!

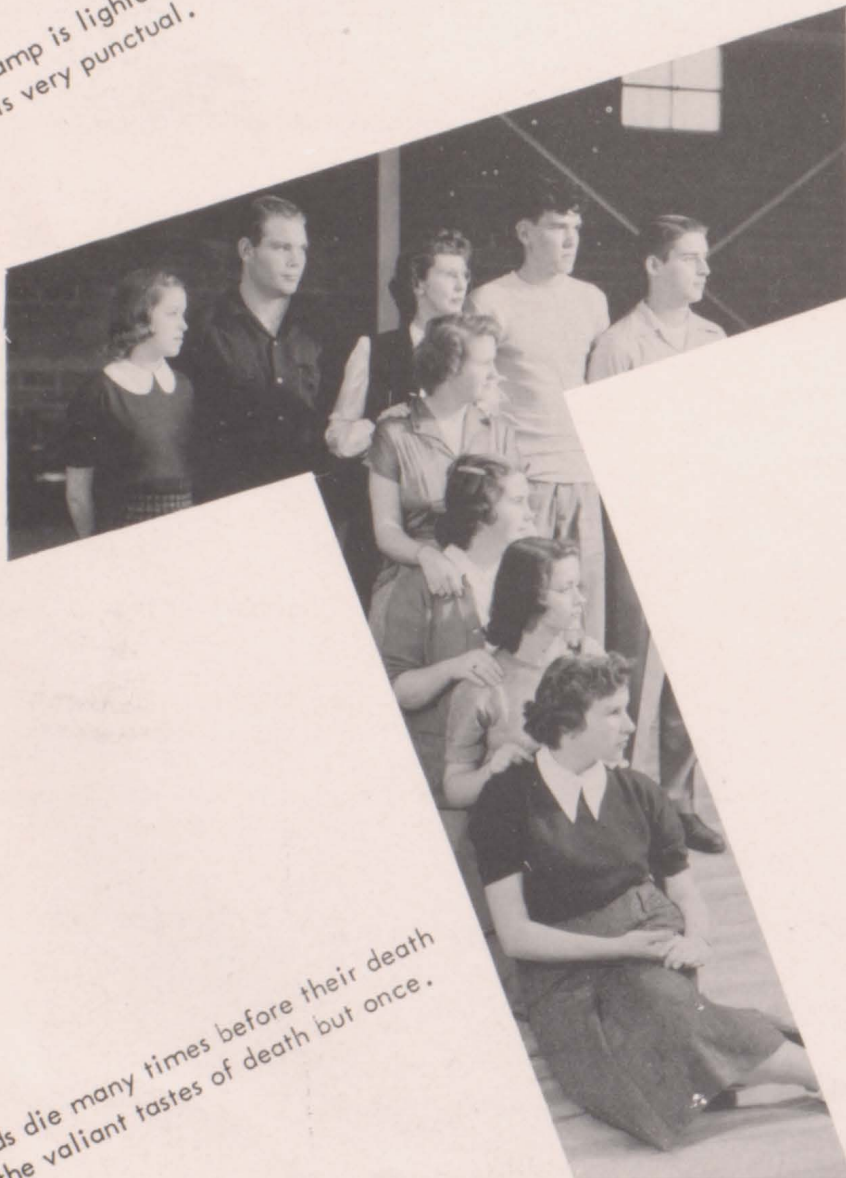
Friends, Romans and countrymen,  
lend me your ears.

Homecoming season brought forth some outstanding floats but the one that won first place was the Thespian float. The theme, "Goddess Victory Reigns" was carried out in the Thespian colors of gold and blue.

Festivities during the Christmas vacation included the Holiday party. Queen Anita Cullen and King Art McClelland reigned over the winter wonderland.

The lamp is lighted,  
God is very punctual.

To be or not to be,  
that is the question.



Ruth Adams  
Darwin Long  
Miss Liddell  
Conrad Amons  
Howard Van Pelt  
Nadine Wildman  
Janice Hogan  
Beverly Penn  
Pat Coulthard

Cowards die many times before their death  
but the valiant tastes of death but once.

YEA!

TEAM  
FIGHT



PEP  
CLUB



Yea Corning! We won! We won!

Yes, that is what we yell and who are we? Why, the Pep Club, of course.

We were organized at the beginning of the school year to make noise and go to every game, yell our lungs out, and raise the spirits of the boys.

Miss Ella Jeanne Gorman and Mr. Carl Whipple are our wonderful Pep Club sponsors. What do they do? Why advise us, of course.

The red and white Pep Club has forty five active members including the seven cheerleaders.

Our president is Janice Hogan. The vice-president is Pat Coulthard. Other important officers are Secretary, Susan Lauber, and Treasurer, Anita Cullen. They are quite active in their positions and do their share of work.

A few of our activities besides yelling and cheering at all the games included the selling of candy at noon to help pay for new cheerleading sweaters. The sweaters received were red with white and black trim megaphones and the letter C on them.

The ever-ready members of the Club bought white, short-sleeved, turtlenecked sweaters to wear with dark skirts and trousers. They looked very attractive when sitting together at the thrilling games.

This is what the Pep Club did on the sidelines when not yelling and shouting to back up "good, old" C.H.S. From the 1951-1952 Pep Club we say and know that the Pep Club will be just as and more active in the next and coming years.



The Girls Athletic Association is one of the major organizations in C.H.S. It is open to all girls who wish to express their athletic ability. Outstanding members receive pins and letters at the end of the year.

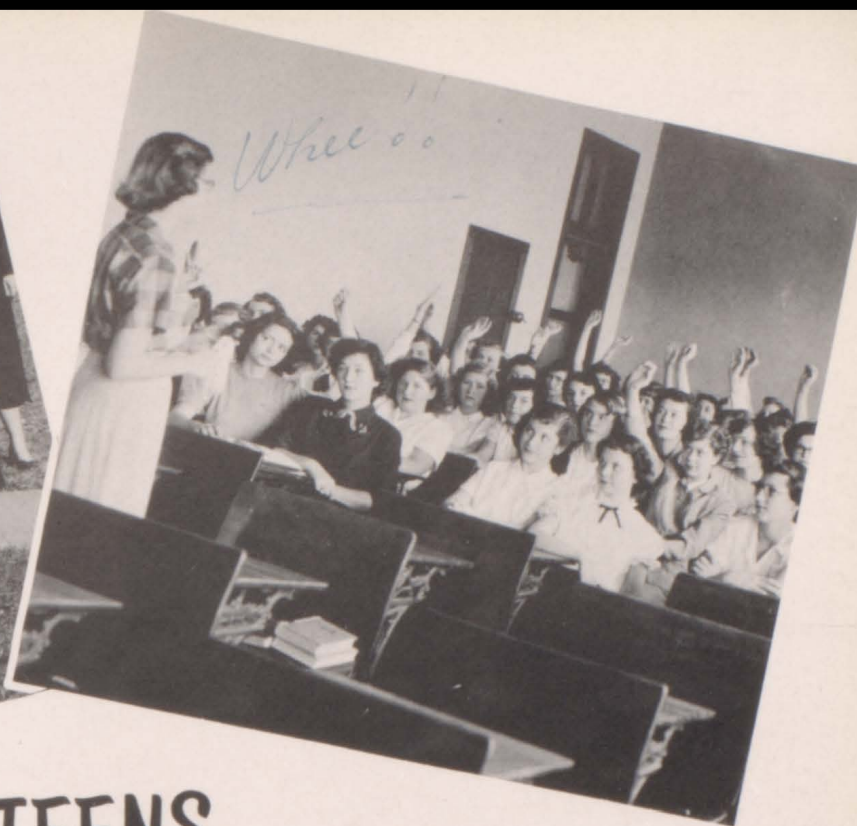
The 1951-52 club had 34 members. We held volleyball, basketball, badminton and softball tournaments throughout the nine months.

The big feature of the winter season was playing basketball with the G.A.A. groups of the neighboring towns. We had a first and second team with substitutes and cheerleaders.



**G.A.A.**





## Y-TEENS

The Y-Teens is the largest organization with the school system. The past year, membership consisted of seventy eight members. Besides providing interesting and worthwhile activities for its members, the Y-Teens serves as an invaluable instrument in developing a sense of community responsibility and the value of good public relations between school, community, and student.

"Hand over that paint brush, please!" "Say, will you put that wheel on?" These are familiar statements if one happens to be passing Y-Teen headquarters just before Xmas. They mean that toys are being repaired and painted for the children at a Kiddie Xmas Party sponsored by the Y-Teens;

The Y-Teens are active in other affairs, too. Several meetings were held consisting of discussion groups with faculty counselors. Members represented the Y-Teens at the Y-Teen Conference held at Clarinda. June Stillinger was elected District Vice-President.

The Mother's Council is a valued adjunct to the Y-Teens. The Council sponsored the Arthur Murray dance classes this year.

The Y-Teens sponsored the Mother-Daughters Banquet, helped with Homecoming activity, and planned the Senior Breakfast. Funds were raised through food sales and the selling of programs at the basketball games.

The Y-Teens were under the able supervision of its hard working sponsors, Kathleen Parker and Eva Kazebeer.



# F.H.A.



The Future Homemakers of America made its formal debut at C.H.S. October 13 when the Bedford Chapter officers installed us as official members of the national organization.

A great deal of work and planning filled the early months since a constitution had to be approved as well as national, state and local programs.

But as we look back on our year in F.H.A. we find that we have had some fun, too, as we remember the District meeting in Malvern, and the state convention in Des Moines. Good times were had at home at parties, in preparing the Thanksgiving baskets, in singing Christmas carols and in winning third place with our homecoming float.



Janice Ritnour, Joyce Piercy, Doris Lundquist, Irene Bressler, Evelyn Kirkpatrick, Dorothy Pennington, Lorraine Paul, Alice Rae Thomas, Ruby Cooper, Janice Edwards, Peggy Resh, Marie Badgett, Ella Mae Johannes, Marilyn Neill, Virginia Hight, Marilyn Nelson, Helen Holbrook, Anita Cullen, Deloris Sturdevant, Ruby June Nelson, Freda Kingery, Connie Kinne, Nadine Carr, Coleen Inman, Joyce Kirkpatrick.



When to the audio-visual room you go,  
You always expect to see a show,  
But do you ever stop to think,  
About the person who is the middle link?  
That person is the one who runs the machine,  
He belongs to a club that's really keen.  
This club teaches him just how  
To run the projector right now.  
Mr. Traxler is the wonderful teacher  
And they all agree he's the main feature.  
They have an excellent staff  
Who serve all without wrath.

# OPERATORS CLUB



# F.F.A.

# OFFICERS



The first day of school the freshmen boys are all excited about becoming members of the valuable organization called the F.F.A. Most of the members-to-be have heard about the work of the organization and its contribution to an agricultural community. Upon joining, however, the boys soon find out that there is much more expected of them than the mere gaining of knowledge of crop and animal raising; they discover the social and cultural aspects of the organization's objectives.

Money for conducting the affairs of the F.F.A. is raised in various ways such as the selling of programs at the football games in the fall. Other sources of income arise from the system called "work days" in which the students and members earn wages for one day's work on the farm. They are excused from class for this day. Organizational dues constitute the final source of income.

On the social side the F.F.A. sponsored the Harvest Ball, sent five members to the National Convention in Kansas City, Missouri, and helped to sponsor the Homecoming Dance.

In March the F.F.A.'s seventy two members demonstrated their agricultural acumen to their parents at the annual Parent-Sons Banquet. In April they attended the state convention at Cedar Rapids.

In closing the year the organization awarded recognition to outstanding student selected on a merit system devised by Mr. Carl Whipple, the F.F.A.'s able sponsor and advisor.





Thinking in terms of dollars



Mighty lot of bacon.



Hopalong Kennedy



Head for the hills

Hot shot Nelson

All eyes on the ball





INITIATION

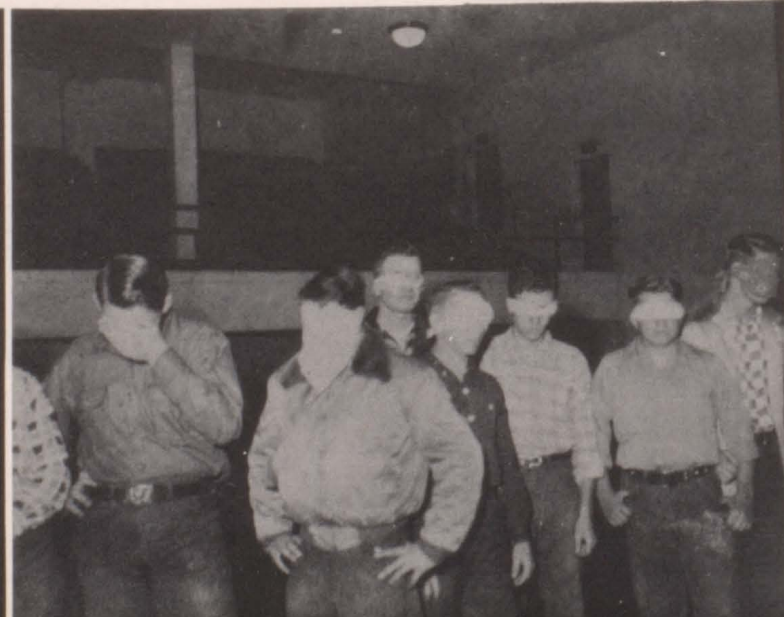


HARVEST BALL



GREENHANDS

DECORATING



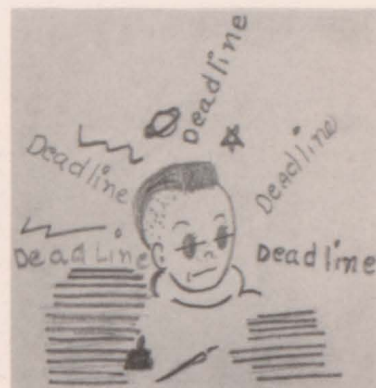
# THE YEARBOOK STAFF

The Yearbook Staff is composed of seventeen members and is under the able direction of Mr. John Doyle.

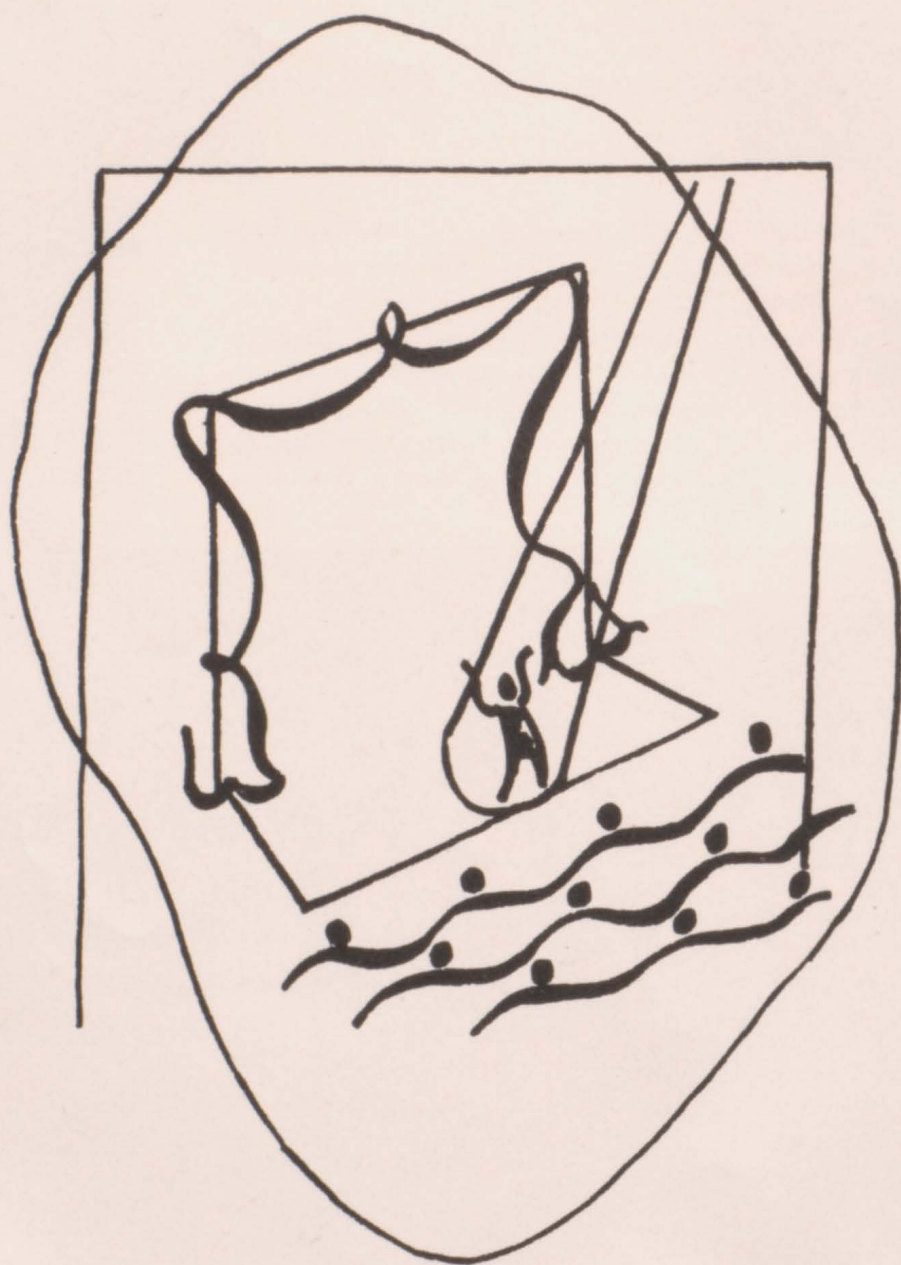
One of the big headaches of the staff is meeting deadlines. It's a lot of work but when it's all done there is a feeling of accomplishment.

The staff hope you find this book to be one of the best in C. H. S.

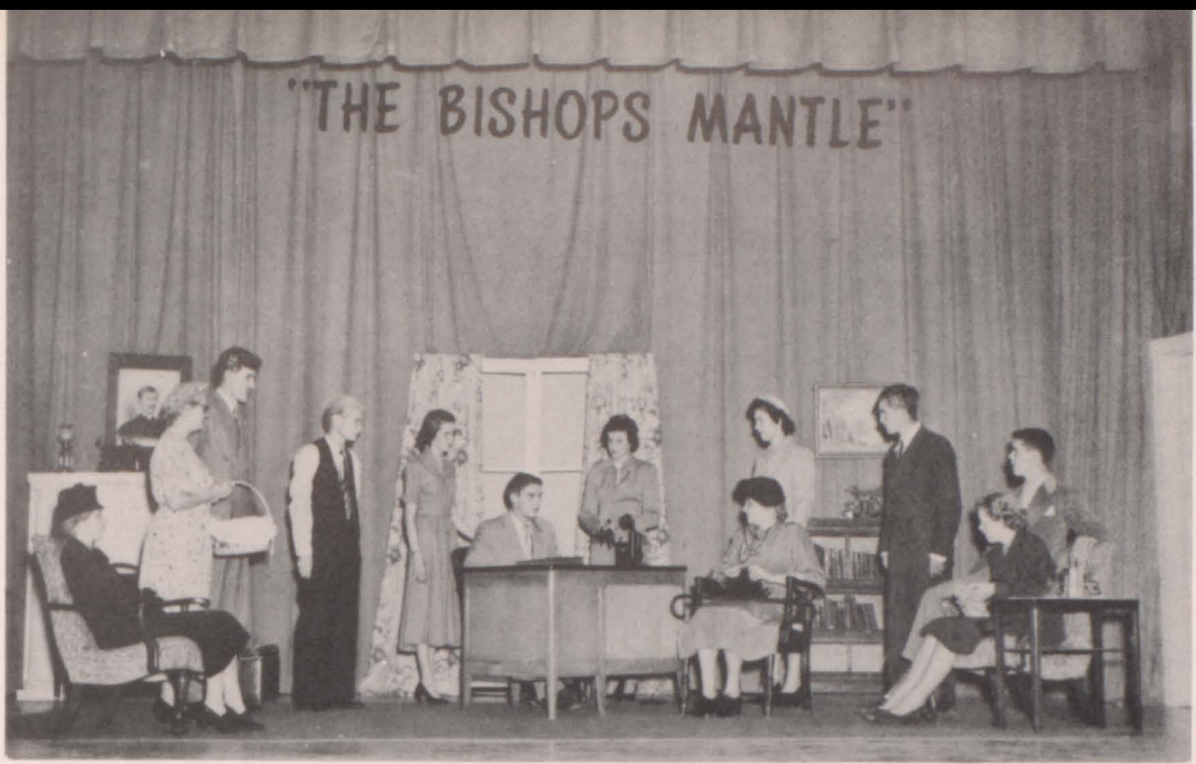
The staff includes: Joan Talty, Co-Editor; Ruth Adams, Co-Editor; Dick Gibson, Business Manager; Donna Watts, Norma Farris, Copy; Pat Coulthard, Bonnita Davis, Make-Up; Jo Schafroth, Kathryn Quinn, Art; Sam Bixler, Photographer; Cletus Mercier, Beverly Claussen, Sports; Marjie Olive, Music; Janice Hogan, Drama; Irene Bressler, Clubs; Janice Lindhammer, Classes; and Larry Waters, Faculty.



# SPEECH AND DRAMA



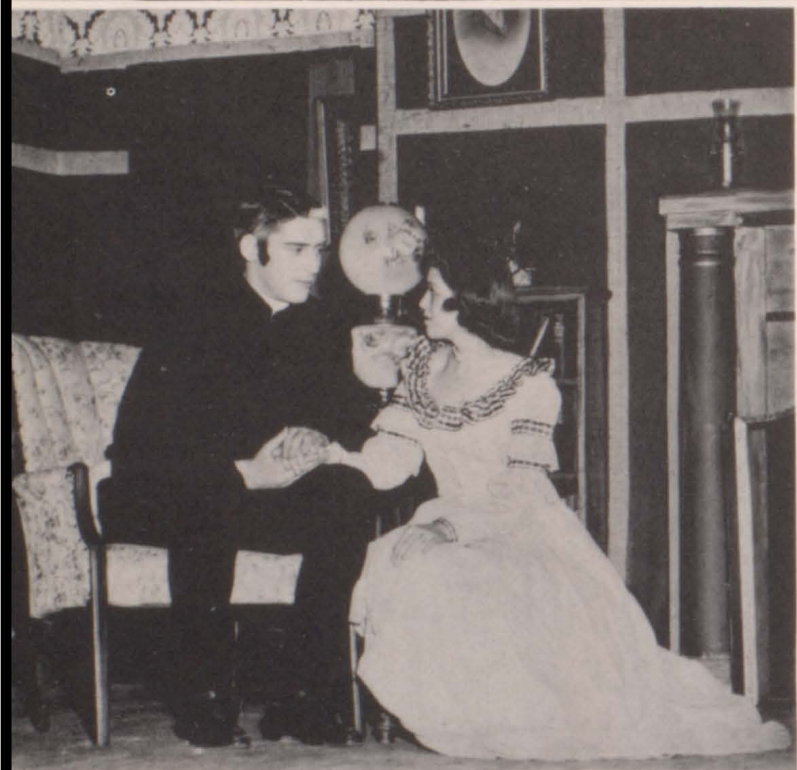
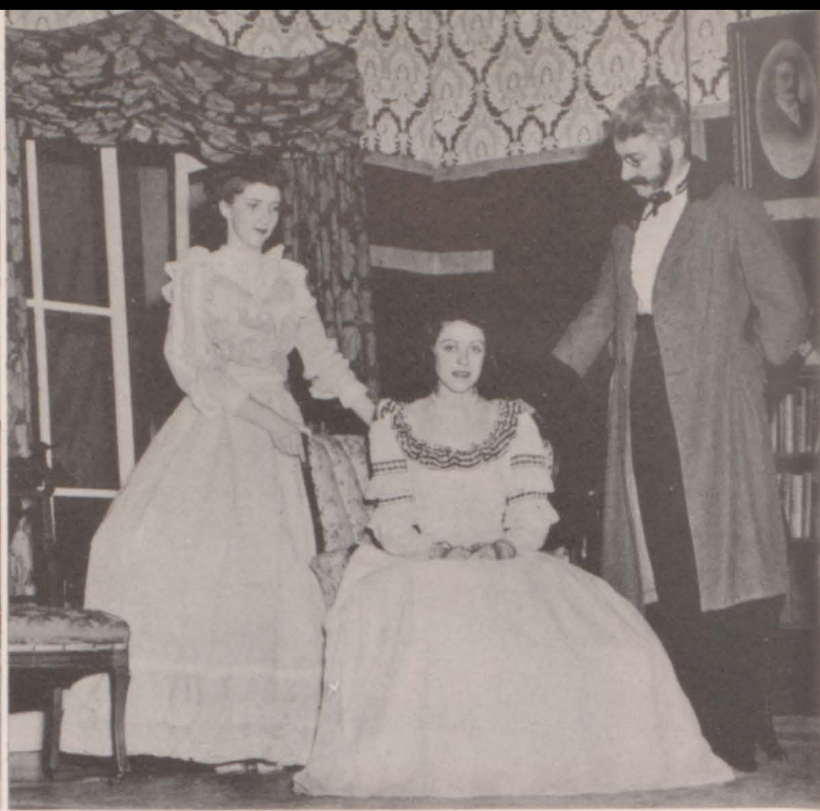




### SENIOR CLASS PLAY

Twelve Seniors presented the annual class play November 14-15 under the able direction of Miss Rena Liddell. The cast included the following people; Bonnita Davis, Nadine Wildman, Conrad Amons, Carol June Calkins, Dick Carothers, Joan Talty, Howard Van Pelt, Donna Watts, Pat Coulthard, Larry Waters, Edd Bush, and Ruth Long.





## "EASTWARD IN EDEN"

### AN ALL-SCHOOL PLAY

Austin Dickinson . . . . .	Glenn Mayo
Lavinia Dickinson . . . . .	Bonnita Davis
Maggie . . . . .	Nadine Wildman
Lucy Plum . . . . .	Susan Lauber
Susan Gilbert . . . . .	JoAnne Schafroth
Helen Fiske (Hunt Jackson) . . . . .	Carol June Calkins
Gerry Hood . . . . .	Arnold Beath
Ben Newton . . . . .	Bob Scott
Emily Dickinson . . . . .	Ruth Adams
Father Dickinson . . . . .	Kent Wever
Dr. Charles Wadsworth . . . . .	Howard Van Pelt
Miss Simpson . . . . .	Pat Coulthard
Thomas Wentworth Higginson . . . . .	Edd Bush
Martha Gilbert . . . . .	Alice Rae Thomas
James Clark . . . . .	Dick Carothers



HUMOROUS DECLAMATION - Ruth Long, Gwen Smyth, Janice Hogan.

DRAMATIC DECLAMATION - Ruth Adams, JoAnne Schafroth, Irene Bressler, Cherryl Bixler, Marilyn Neill.

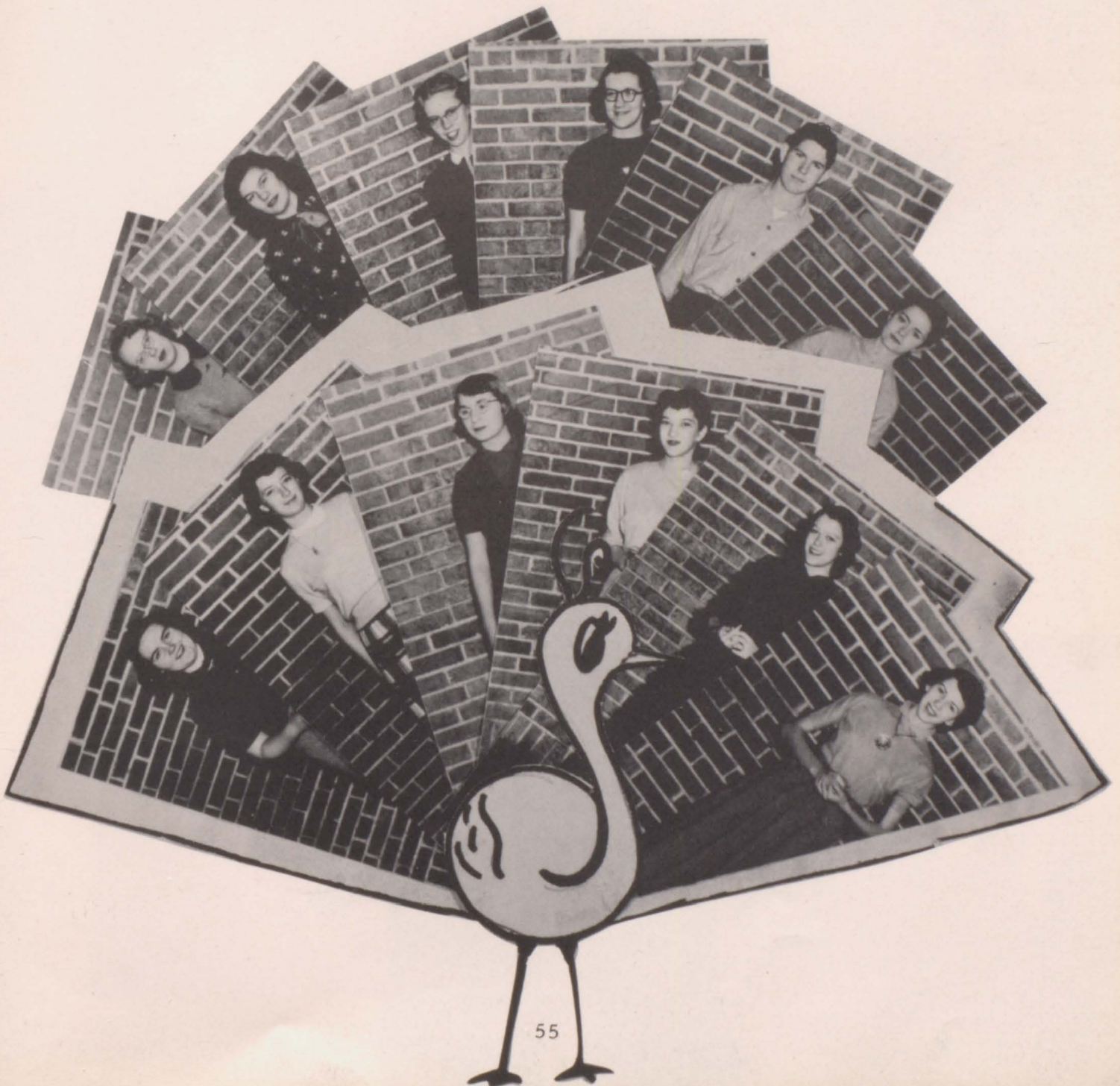
EXTEMPORANEOUS SPEAKING - Jack Ryan.

ORIGINAL ORATORY - Beverly Claussen, Paul Sullivan (Not Shown)

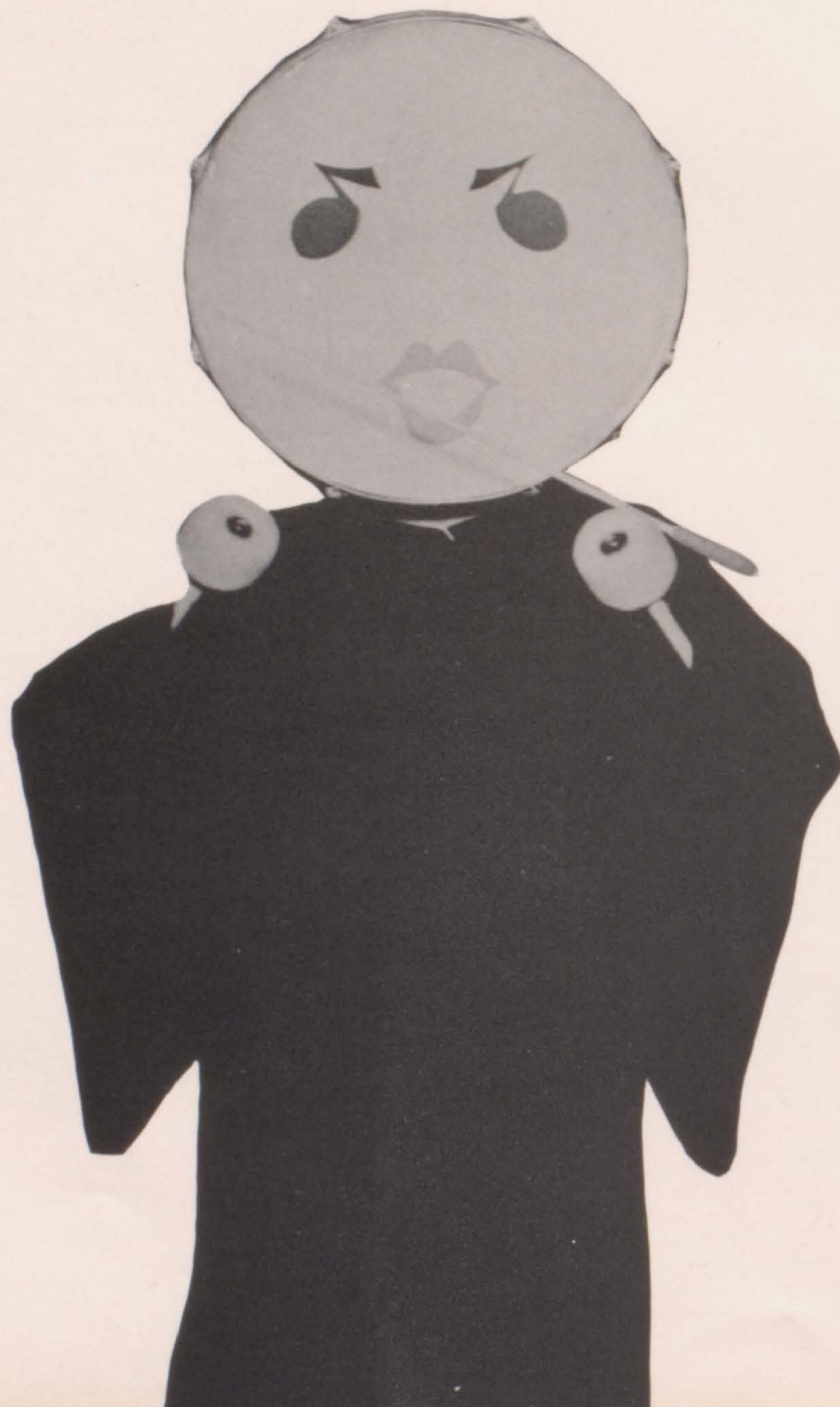
INTERPRETIVE READING - Kathryn Quinn, Ruth Adams, Marilyn Neill, JoAnne Schafroth, Gwen Smyth, Ruth Long, Beverly Claussen.

RADIO SPEAKING - Nadine Wildman, Beverly Penn.

We're "Proud As Peacocks" of Our Students who participated in Speech Contest Work.

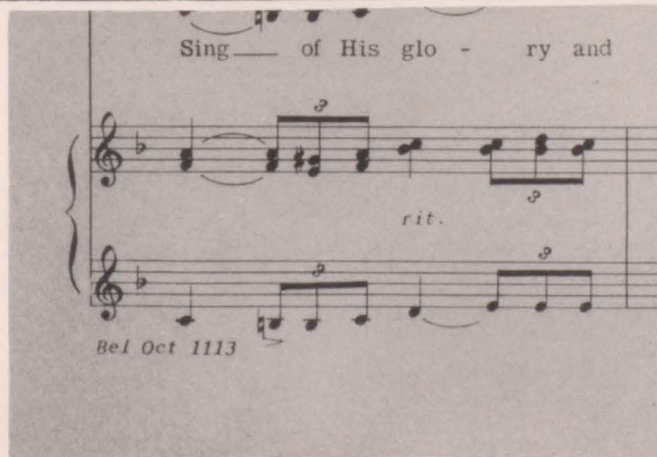
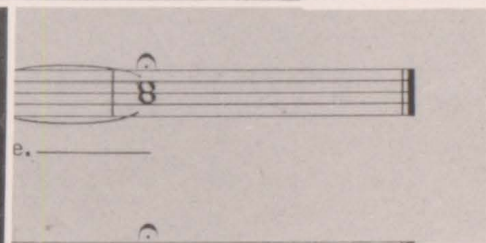
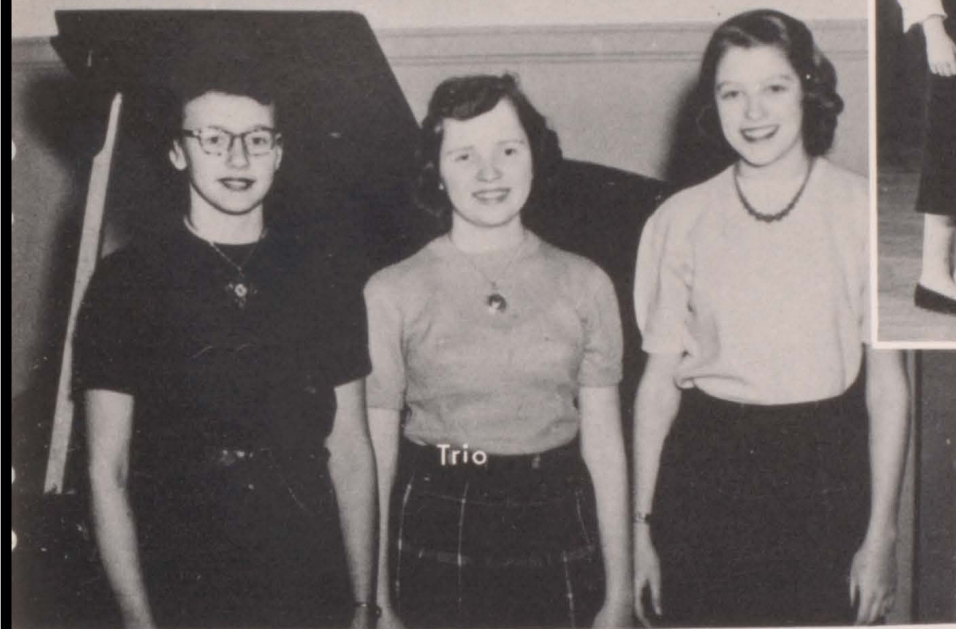
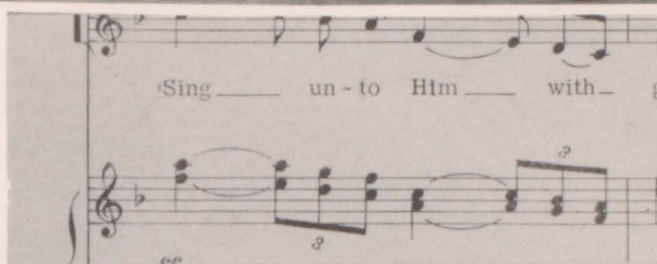
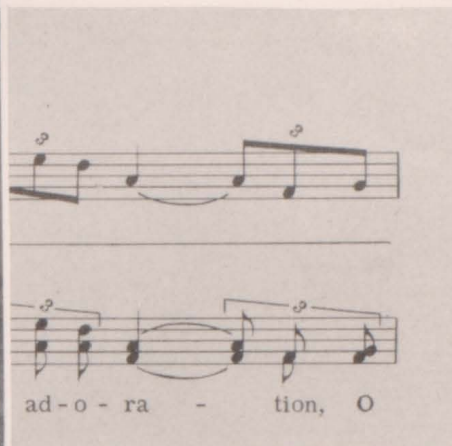


# MUSIC





State Festival





GIRLS GLEE



MIXED CHORUS



BOYS GLEE



Gwen Smyth



Ruth Adams



Alvus West



Miss Tookey



Donna Watts



Nadine Wildman



MIXED CHORUS: Ruth Adams, Cheryl Bixler, Barbara Burgan, Accompanist; Bonnita Davis, Carolyn Harrison, Janice Hogan, Janice Gaskill, Betty Janky, Janice Lindhammer, Ruth Long, Naomi Maeder, Donna Rea Rhodes, Delores Richie, JoAnne Schafroth, Gwen Smyth, Joan Talty, Alice Rae Thomas, Donna Watts, Nadine Wildman, Iola Riegel, Sharon Campbell, Richard Bailiff, Arnold Beath, Carmen Clement, Sam Damewood, Darwin Dotson, Galen Drennan, Harry Janky, Philip Lawrence, Stanley Maas, Cletus Mercier, Douglas Sickler, Alvus West.

GIRLS GLEE CLUB: Ruth Adams, Cathryn Antisdel, Marilyn Bohanan, Berniece Boswell, Irene Bressler, Grace Briggs, Marjorie Briggs, Cheryl Bixler, Barbara Burgan, Leta Chafa, Ruby June Cooper, Patty Coulthard, Anita Cullen, Bonnita Davis, Phyllis Fishell, Janice Gaskill, Phyllis Gentle, Joann Goldsmith, Shirley Haley, Carolyn Harrison, Sally Hatton, Janice Hogan, Betty Janky, Ella Mae Johannes, Connie Kinne, Joyce Kirkpatrick, Mary Lacy, Susan Lauber, Janice Lindhammer, Karen Lines, Ruth Long, Naomi Maeder, Shirley Miller, Verla Mosman, Marilyn Neill, Bernadine O'Connell, Marjie Olive, Beverly O'Riley, Shirley Penn, Conie Preston, Shirley Preston, Kathryn Quinn, Donna Rea Rhodes, Marvis Richardson, Claire Richey, Delores Richie, Iola Riegel, JoAnne Schafroth, Elizabeth Sherlin, Gwen Smyth, Joan Talty, Alice Rae Thomas, Donna Watts, Accompanist; Betty Westlake, Nadine Wildman, Darleen Wilmarth, Pauline Wilmarth, Janet Lawrence, Jean Gearheart, Sharon Campbell.

BOYS GLEE CLUB: Richard Bailiff, Arnold Beath, Carmen Clement, Sam Damewood, Darwin Dotson, Galen Drennan, Harry Janky, Philip Lawrence, Stanley Maas, Cletus Mercier, Douglas Sickler, Alvus West, Betty Janky, Accompanist.



## MARCHING BAND

The Corning High School band is composed of 65 members. They are: Velma Jacobs, Jean Talty, Donna Janky, Connie Wild, Marcia DeVore, Karen Day, Donnie Harrison, Jon Dotson, Karen Dotson, Ted Turner, Barbara Boelling, Mary Jane Arbuckle, Gary Thompson, Linda Vernon, Marie Westlake, Beverly Gaskill, Ronnie Young, Eleanor King, David Dunlavy, Norma Ruben, Ruth Adams, Patty Coulthard, Delores Richey, Stanley Maas, Betty J. Boelling, Arnold Beath, Carolyn Harrison, JoAnne Schafroth, Delores Peterson, Sharon Campbell, Pat Means, Marvis Richardson, Betty Janky, Karen Lines, Jean Gearheart, Bonnita Davis, Janice Gaskill, Barbara Burgan, Jim Biggar, Alice Boswell, Donna Costello, Larry Carmichael, Buddy Vernon, Nadine Wildman, Harry Janky, Doyle Perry, Kent Wever, Donald Riegel, June Stillinger, Hazel Case, Beverly Penn, Connie Hall, Naomi Maeder, Susan Lauber, Cletus Mercier, Beverly Claussen, Donna Nolte, Keith Riley, Donna Watts, Gwen Smyth, Bob Hanson, Gen Dotson, Joan Talty, Rosemary Thiel, Marilyn Mercier.

October 13 the band traveled to Shenandoah where they received five division one ratings, twirling ensemble, three twirling solos and the band.







Our school is very proud of CHS Band noted for its musical ability. The bright uniforms and stirring music catch the eye and the ear of the public.

The Band has presented a series of four concerts sponsored by the '500' Club. At Christmas time a brass choir played appropriate carols at the pageant. A pep band played at every athletic contest, thus encouraging school spirit.

With the outstanding talent of the members of the band and the capable leadership of the director, Mr. Collins, the band can look forward to an even better year of music next year.



Saxophone Sextet



Flute Quartet



Trumpet Trio



Drum Quartet

Woodwind Quartet





Saxophone Quartet



Trombone Quartet

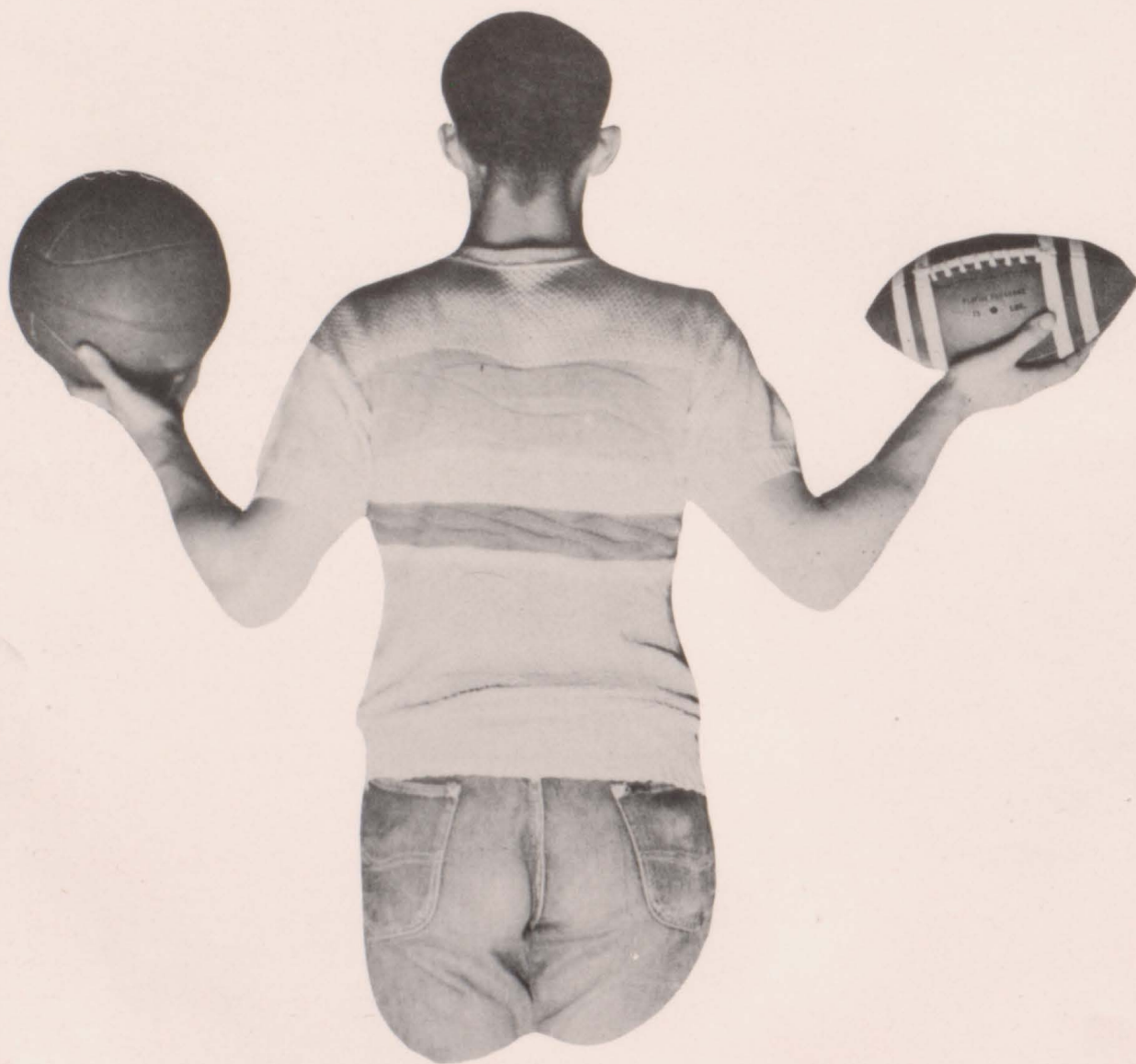


Woodwind Trio



Mixed Clarinet Quartet

# ATHLETICS



BEST SPORT

- Ed Lawrence
- Phil Sturdevant
- Jerry Kever
- Jim Curtis

FOOTBALL HERO

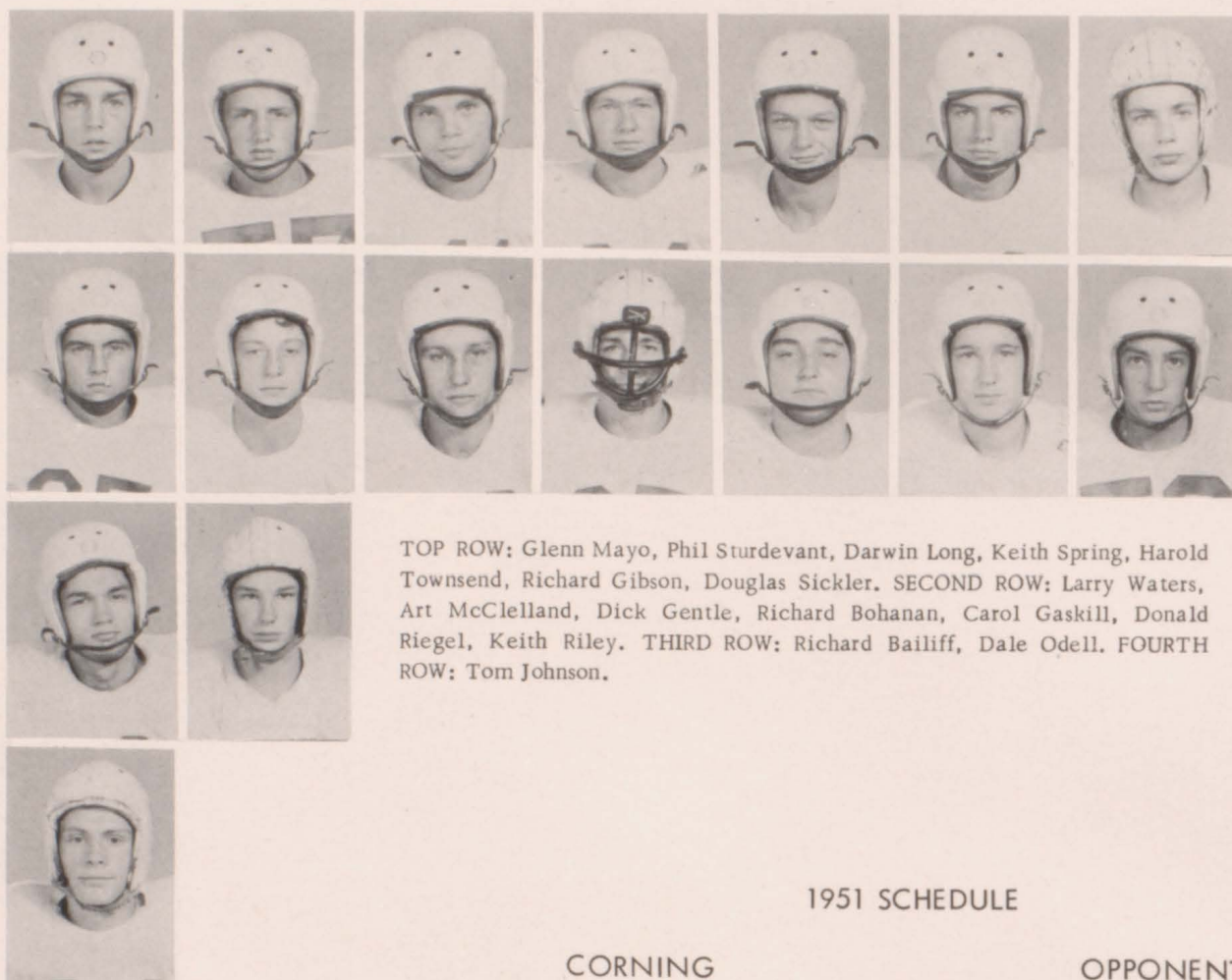
- Darwin Long
- Don Riegel
- Harold Townsend
- Doug Sickler

BASKETBALL HERO

- Connie Amons
- Phil Sturdevant
- Jerry Kever
- Jim Curtis

SPORTS WHO'S WHO



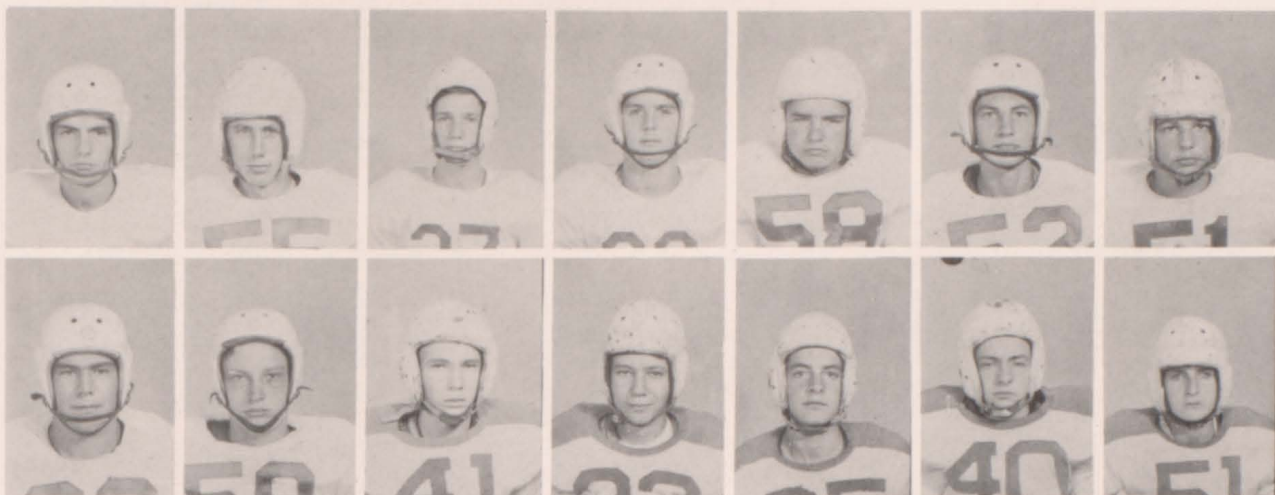


TOP ROW: Glenn Mayo, Phil Sturdevant, Darwin Long, Keith Spring, Harold Townsend, Richard Gibson, Douglas Sickler. SECOND ROW: Larry Waters, Art McClelland, Dick Gentle, Richard Bohanan, Carol Gaskill, Donald Riegel, Keith Riley. THIRD ROW: Richard Bailiff, Dale Odell. FOURTH ROW: Tom Johnson.

### 1951 SCHEDULE

CORNING	OPPONENTS	
7	Mt. Ayr	0
0	Creston	21
7	Red Oak	21
6	Clarinda	13
33	Villisca	31
0	Atlantic	19
0	Shenandoah	27
0	Abraham Lincoln (Council Bluffs)	13
6	Glenwood	58





Lawrence  
Konecne

West  
Curtis

Keever  
Havens

Bush  
Easterlie

Timmerman  
Wilkinson

Chafa  
Scott

Nelson  
Simmons

Miller  
Farris



Arbuckle



# TEAM TEAM TEAM



FIRST ROW: Don Riegel, Ed Lawrence, Glenn Mayo, Keith Spring, Richard Bohanan, Dick Gibson, Larry Waters. SECOND ROW: Dean Curtis, Carol Gaskill, Don Chafa, Phil Sturdevant, Darwin Long, Richard Bailiff. THIRD ROW: Alvus West, Lonnie Timmerman, Keith Riley, Doug Sickler, Dick Gentle, Larry Nelson, Harold Townsend, Jerry Kever, Art McClelland. FOURTH ROW: Francis Tranbarger, Gene Havens, Bob Scott, Tom Johnson, Bobby Wilkinson, John Lovely, Dale Odell, Billy Miller, Merle Jordening, Gordon Sickler. FIFTH ROW: Jim Biggar, Norman Naven, Jack Harvey, Larry Lenz, Donald Simmons, Fred Arbuckle, Robert Thomas, Gary Easterlie, Tom Waters, Jim Curtis, Bill Farris.







SPORTS WHO'S WHO

BEST WRESTLER  
Darwin Long  
Daryl Johnson  
Dean Curtis  
Carol Beemer

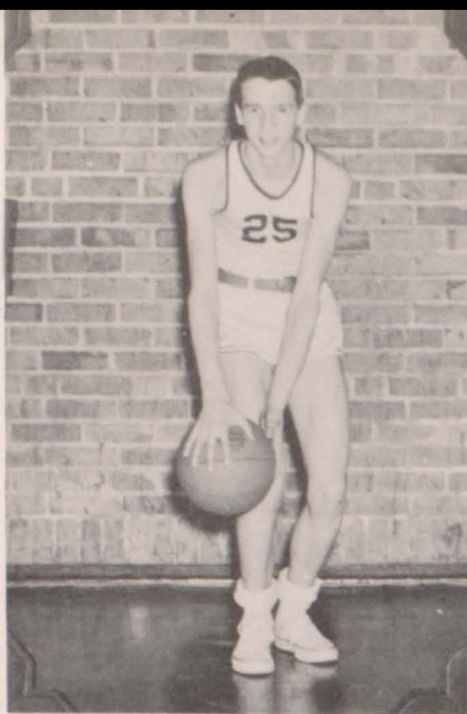
VOLLEY-BALL FAVORITE  
Donna Watts  
Tom Johnson  
Glen Mayo  
Elnora Silby

CHECKER KING  
Carol June Calkins  
Ted Kinne  
Gary Easterlie  
Daryl Calkins

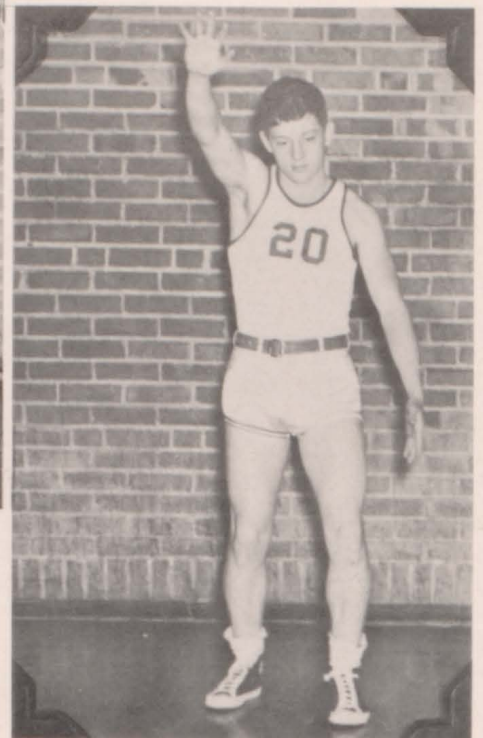
BEST PING PONG PLAYER  
Paul Sullivan  
Bud Vernon  
Sally Hatton  
Alice Rae Thomas



Don Chafa



Jerry Kever

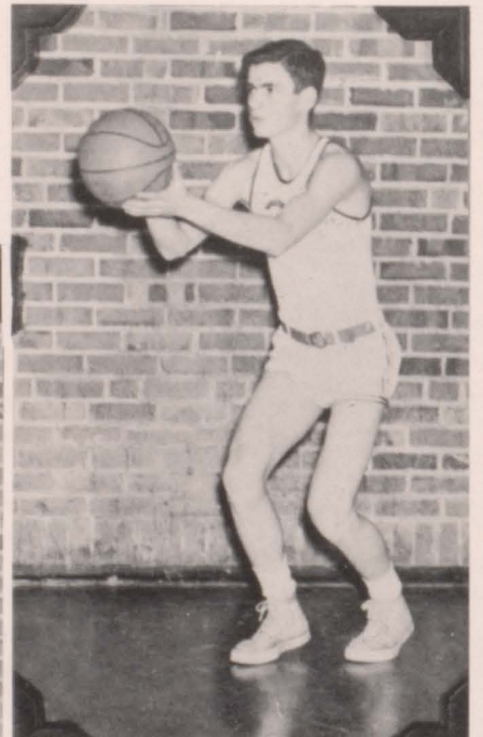


Art McClelland

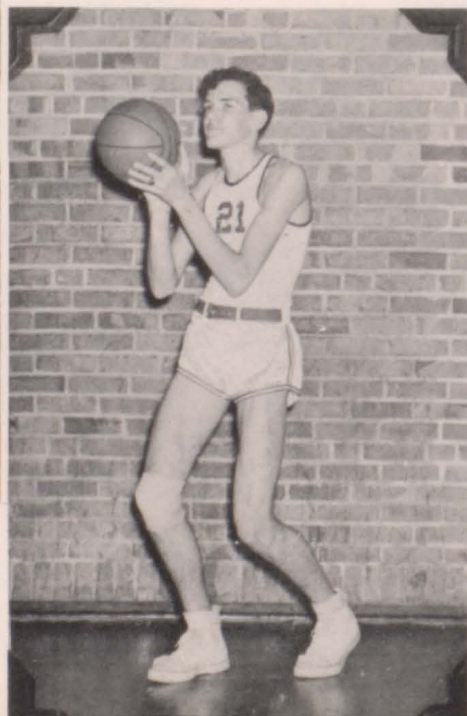
Phil Sturdevant

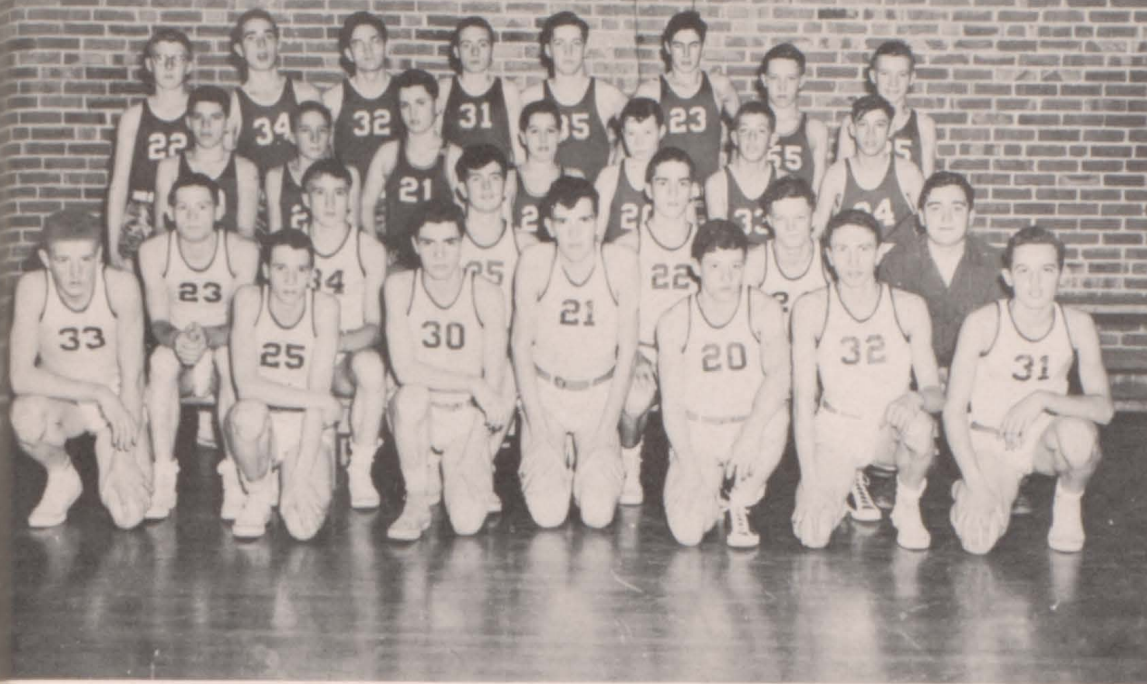


Ed Lawrence

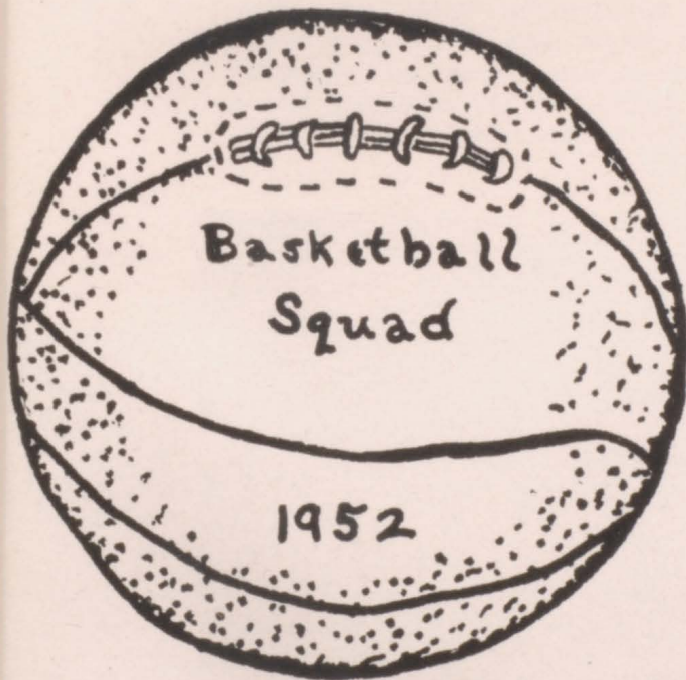


Conrad Amons





FIRST ROW, L. TO R.: Sturdevant, Kever, Lawrence, Amons, McClelland, Chaia, Nelson. SECOND ROW, L. TO R.: Johnson, Riegel, Waters, Mayo, Townsend, Gaskill. THIRD ROW, L. TO R. Schafroth, Farris, Rubin, Johnson, Vernon, Johnson, Curtis. FOURTH ROW, L. TO R.: Sickler, Mercier, Bailiff, Scott, Kinne, Lovely, Curtis, Easterlie.



Corning	43	Diagonal	24
"	48	Bedford	44
"	59	Shenandoah	34
"	40	Villisca	43
"	48	Red Oak	40
"	42	Glenwood	55
"	37	Creston	51
"	50	Clarinda	30
"	61	Atlantic	47
"	71	Bedford	49
"	57	Shenandoah	42
"	51	Villisca	33
"	50	Red Oak	41
"	52	Greenfield	25
"	40	Glenwood	43
"	47	Creston	40
"	62	Clarinda	38
"	54	Atlantic	62
SECTIONAL TOURNAMENT			
Corning	56	Lenox	31
"	67	Red Oak	46
DISTRICT TOURNAMENT			
Corning	44	Creston	47
"	65	Mt. Ayr	63



THIRD ROW: Dale Stuvick, Richard Givan, Terry Wright, Raymond Bressler, David Dunlavy, John Keith, Bobby Ruben, Richard Gillet, William Thomas, Gary Cooper. SECOND ROW: Jane Biggar, Kathy Campbell, Lois Yearington, Monica Waters, Connie Wild, Karen Dotson, Patty Thompson, Mary Lu Larson, Donna Janky. FIRST ROW: Sherry Updike, Evelyn Kingery, Jean Talty, Delores Holker, Dixie Sickler, Carol Devereaux, Marcia DeVore, Helen Russell, Rosemary Thiel, Beverly Drew, Sally Carmichael.

THIRD ROW: Minnie Ellen Key, Joann Piercy, Betty Lou Harvey, Betty Jane Reid, Vanice Jensen, Verlee Russell, Beverly Rodman, Cheri Kay Tindall, Mary Lou Goodnight. SECOND ROW: Mrs. Chappell, Vernon Coulthard, Stephen Schafroth, Verlin Dicks, Ronald Brazeal, Ivan Dixon, Wauneta Reed, Sandra Stueckradt, Roberta Townsend, Donna Stuvick, Patsy Boswell. FIRST ROW: Kenneth Booth, Francis Kingery, Bernard Coulthard, Richard Hatton, Michael Leonard, Darwin Thompson, Harold Ogburn, Jack Campbell, Carolyn Posten, Betty Ann Kinne.



# JUNIOR HIGH ATHLETICS

## FOOTBALL



FIRST ROW: Wilson, Dixon, B. Coulthard, Keith Kingery, Turner, Coach Larimer. SECOND ROW: Thompson, Ruben, Bressler, Ogburn, Wright, Hatton. THIRD ROW: Gillette, Dame-wood, V. Coulthard, Dicks, Thompson, Schafroth, Gibson, Stuvick, Farris.

FIRST ROW: Hatton, Wright, Schafroth, Farris, Thompson, Wynn. SECOND ROW: DeWees, Gillette, Dicks, Givan, Campbell, Young. THIRD ROW: Simonds, Bressler, Dunlavy, Turner, Keith, Wilson.

## BASKETBALL



**ADVERTISING CONTRACT**

C. H. S. Endorsee  
Type advertiser's name above

Date 1951-52

I agree to purchase \_\_\_\_\_ page (s) of advertising space in the  
yearbook for  
CORNING HIGH SCHOOL  
(Name of school)

at a price of \$ 3.00. Advertising copy for this space will be  
furnished not later than \_\_\_\_\_.

Paid \$ 3.00.  
Advertiser C. H. S. Endorsee  
Due \$ \_\_\_\_\_ on \_\_\_\_\_. Bus. Mgr. Dick Gibson

## ENDORSERS

Adams Co. R. E. A.  
Anderson & Miller Oil Co.  
Andrews Clothing Co.  
Benders Garage  
Biggars  
Campbell & Tindall  
Corning Concrete Co.  
Corning Hatchery  
Corning Motor Co.  
Coulter Garage  
Curry & Mack  
DeVoe Implement  
Dr. B. J. Fry  
Dr. Ireland  
Dr. Jennings  
Dr. Latimer  
Dunham Drugstore  
Earl F. McClelland, Atty.  
Farm Service Cooperative  
Griffin Shoe Repair  
Harrison Plumbing  
Hill's Ice & Locker Service  
Home Bakery

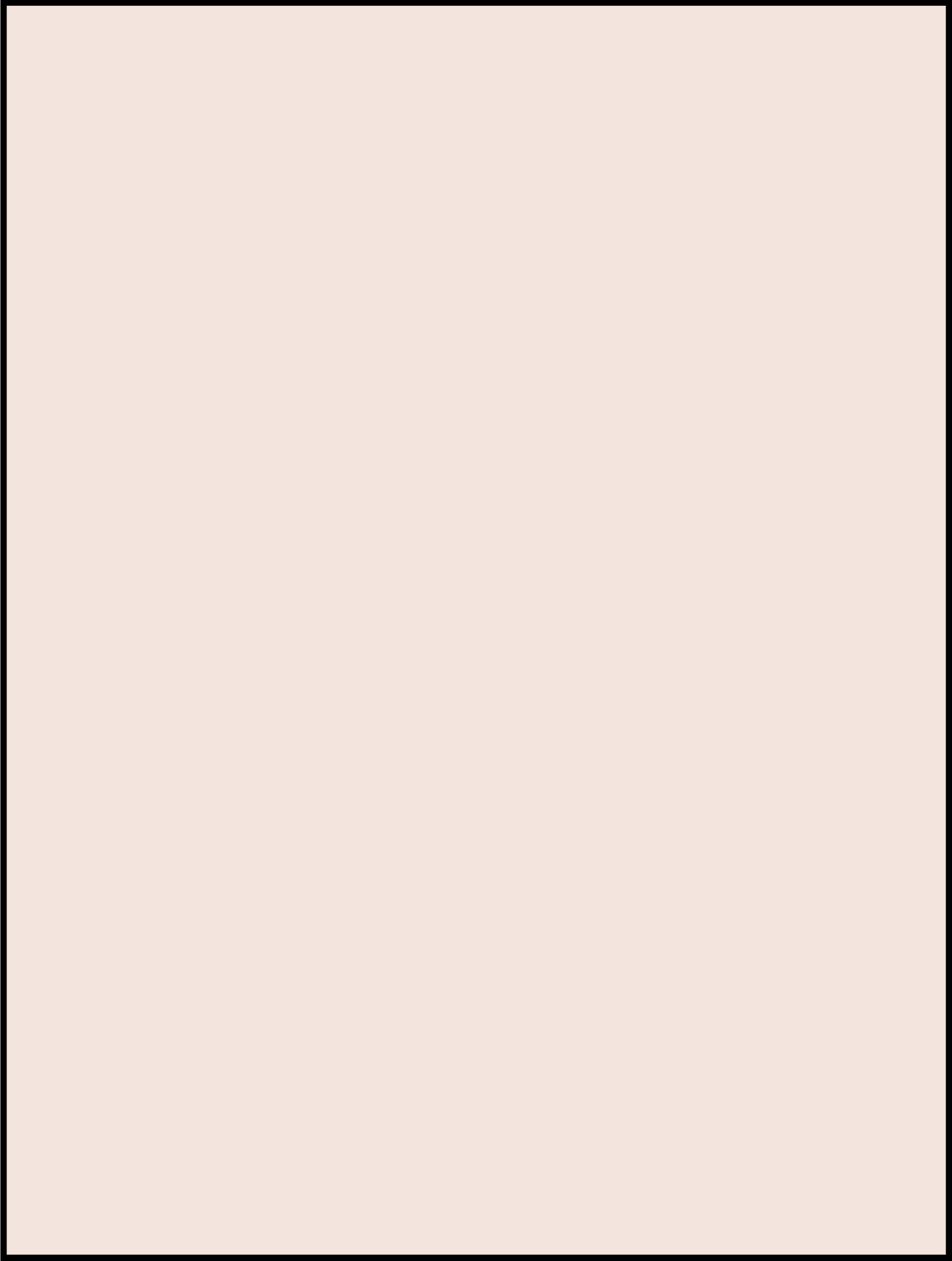
Johnson's Cafe  
Keever Hardware  
Lavelly & Readhead  
Lines Furniture  
M-B Motel  
Mack's Billards  
McClelland Drug Store  
Modern Beauty Shop  
Morgan Implement  
Morris Bros. Implement  
Norton Greenhouse  
Parker Jewelry  
P. M. Place Co.  
Red Star Mills  
Roland Funeral Home  
Ruben Bros. Motor Co.  
Sickler Chevrolet  
Silsbys Super Market  
Standard Oil Co.  
Turner's Since 1868  
United Food Market  
White Front Cafe  
Wilmarth Oil Co.

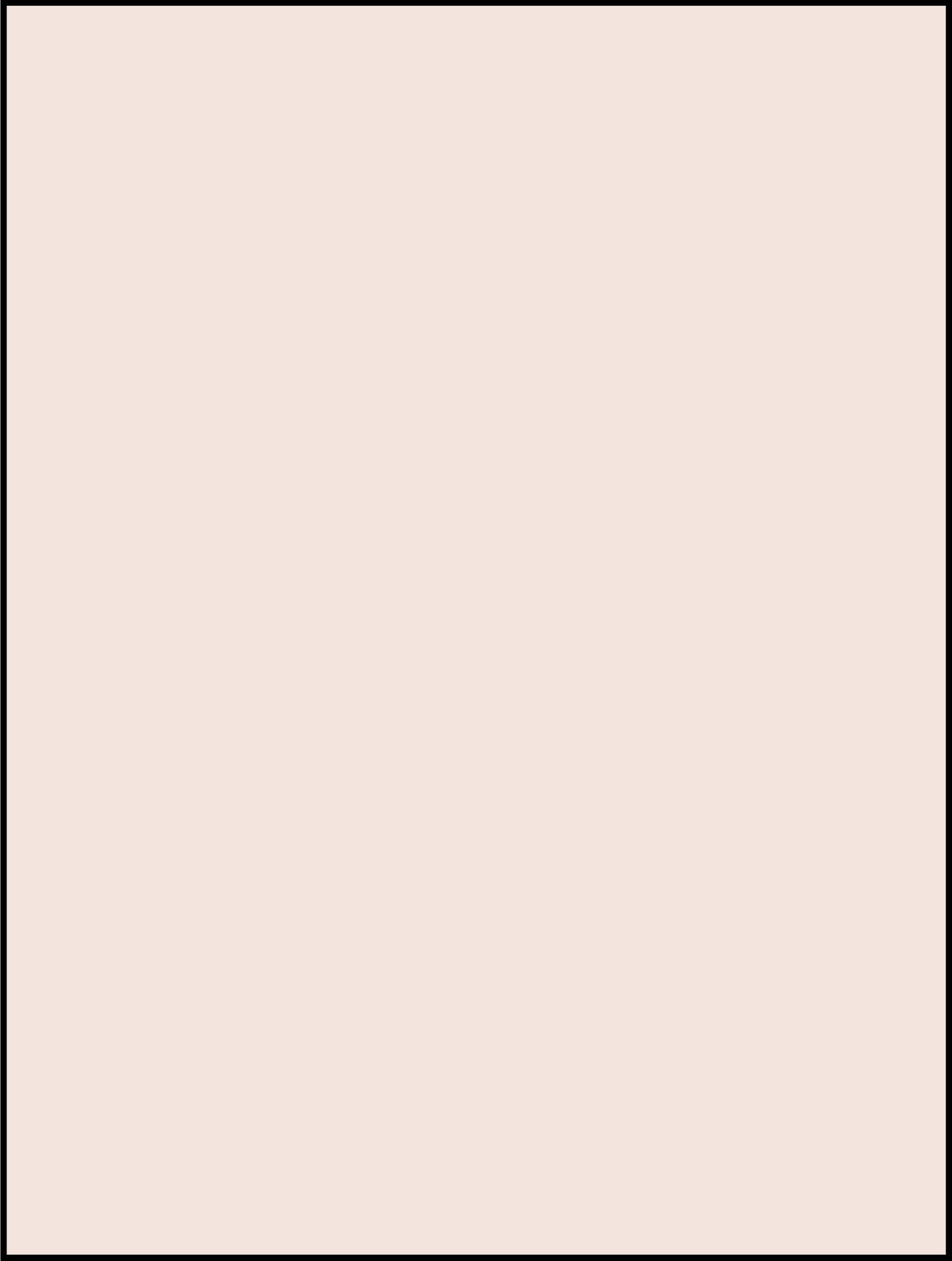
# INDEX

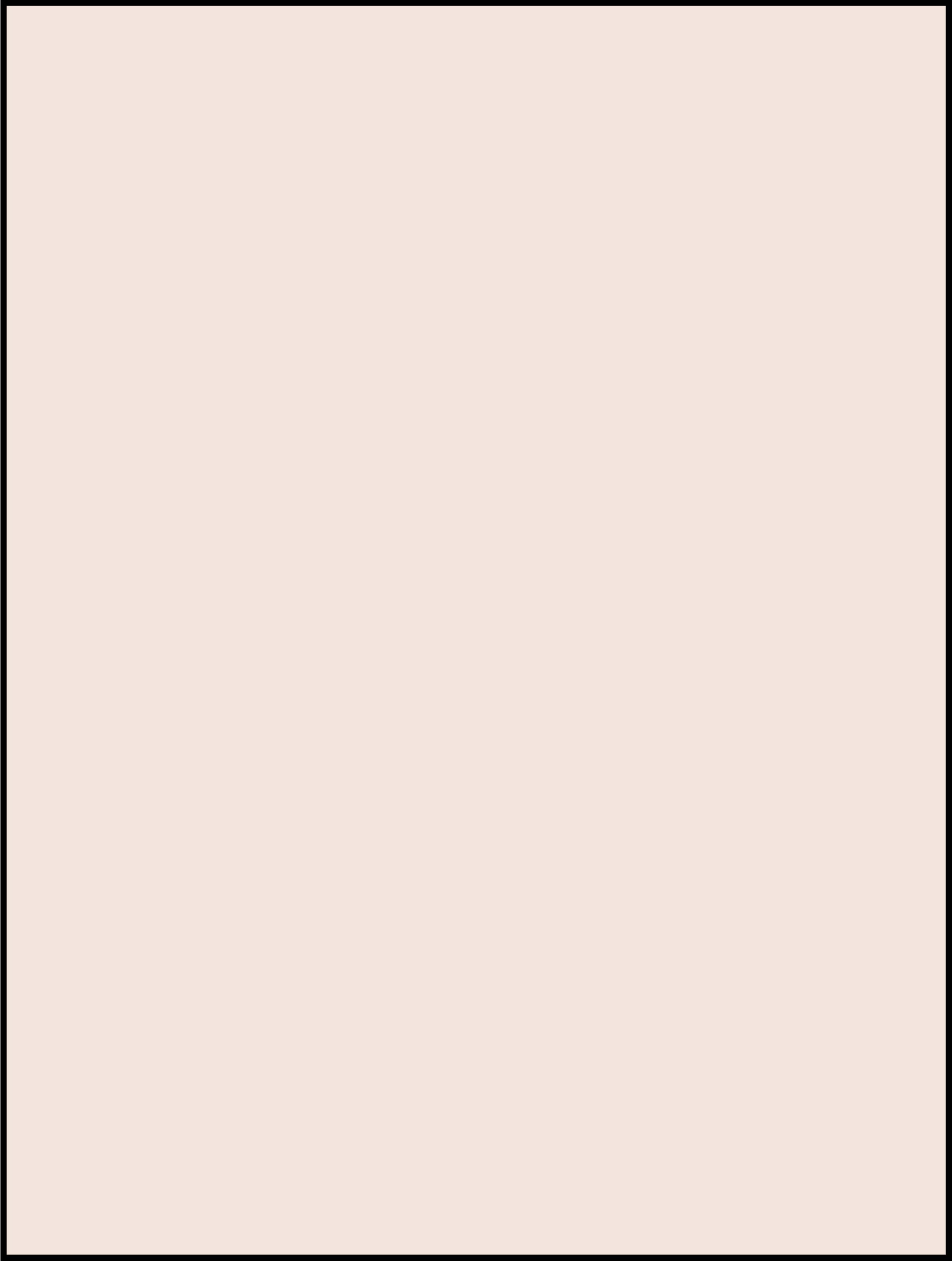
- Adams, Ruth-1, 11, 26, 43, 45, 54, 55, 57, 58, 59, 61, 61, 62  
Amons, Conrad-11, 26, 31, 39, 43, 70  
Antisdell, Cathryn-8, 19, 38, 42, 44, 59  
Arbuckle, Fred-24, 67, 68  
Bailiff, Richard-8, 24, 58, 66, 68, 77  
Bauer, Paul-26, 48  
Bauman, Donald-26  
Beath, Arnold-24, 54, 58, 60, 61, 62,  
Beemer, Carol-26  
Berscheid, Charlotte-24, 42  
Bixler, Carol-19, 42, 45,  
Bixler, Cheryl-19, 42, 45, 50, 55, 57, 58, 59  
Bixler, Lorene-24, 44  
Bixler, Samuel-11, 42, 50  
Biggar, Jim-26, 60, 61, 68  
Boelling, Barbara-26, 45, 60  
Boelling, Betty-19, 45, 61, 62  
Boham, Darlene-24, 45  
Bohanan, Carlton-19  
Bohanan, Marilyn-24, 42, 44, 59  
Bohanan, Richard-19, 20, 39, 66, 68  
Boswell, Alice-11, 31, 45, 60, 61  
Boswell, Bernice-24, 33, 40, 59  
Bressler, Irene-11, 38, 42, 46, 55, 59  
Brown, Betty-11, 45  
Brown, Wayne-19  
Brenton, Ronald-24  
Briggs, Grace-26, 42, 45, 59  
Briggs, Marjorie-26, 42, 45, 59  
Bush, Eddy Joe-11, 26, 50, 54, 67  
Calkins, Carol-12, 45, 54  
Calkins, Daryl-26  
Campbell, Sharon-19, 45, 46, 60, 61  
Carmichael, Larry-24, 60, 61  
Carothers, Richard-12, 26, 54  
Carter, Ramona-24, 44  
Carr, Nadine-19, 38, 46  
Case, Hazel-24, 30, 31, 45, 60, 61, 63  
Castillo, Donna-8, 26, 42, 45, 60, 61  
Chafa, Donald-12, 31, 67, 68, 70  
Chafa, Leta-8, 26, 27, 30, 45, 59  
Claussen, Beverly-12, 44, 55, 60, 61  
Clement, Carmen-19, 20, 57, 58  
Cooney, Weldon-19, 48, 50  
Cooper, Ruby-26, 46, 57, 59  
Coulthard, Pat-12, 38, 43, 45, 59, 60, 61, 62, 54  
Cullen, Anita-26, 42, 46  
Curtis, Dean-24, 50, 67, 68  
Curtis, Jim-26, 68  
Damewood, Joanne-12, 38  
Damewood, Sam-26, 58  
David, Ila-19, 44  
Davis, Bonnita-12, 38, 45, 54, 58, 59, 60, 61  
Dhone, Marvin-19  
Dillion, Gene-24  
Dotson, Darwin-19, 20, 57, 58  
Dotson, Genevieve-13, 38, 45, 60, 61  
Dotson, LeeRoy-24  
Dozier, Delores-19, 45  
Drennan, Galen-19, 57, 58  
Easterlie, Gary-24, 67, 68  
Edwards, Denny-26  
Edwards, Janice-13, 46  
Eggen, Marcene-19, 20, 45  
Farris, Bill-24, 67, 68  
Farris, Norma-13, 33, 38, 42, 44  
Fishell, Phyllis-24, 45, 59  
Freshour, Clifford-8, 13, 42, 50  
Freshour, Jerry-19, 20  
Fudge, Boyd-19, 20  
Fudge, Verlee-13, 45  
Fuller, Marvin-19, 20, 48  
Gaskill, Carol-13, 39, 66, 68  
Gaskill, Janice-19, 20, 45, 57, 58, 60, 61  
Gay, Verlea-24, 44  
Gearheart, Janice-19, 20, 45, 59  
Gearheart, Jean-24, 31, 8, 39, 42, 45, 60, 61  
Gebbie, Patricia-26  
Gentle, Dick-19, 20, 39, 48, 50, 66, 68  
Gentle, Phyllis-26, 42, 45, 59  
Gibson, Richard-19, 20, 33, 66, 68  
Goldsmith, Joan-24, 45, 59  
Groff, Keith-26  
Haley, Deloris-19, 20, 45  
Haley, Shirley-26, 45, 59  
Haley, Twylla-19, 20, 44  
Hall, Connie-26, 45, 60, 61  
Hall, Earl-24  
Hanson, Robert-26, 27  
Hardisty, Donna-26, 44  
Harrison, Carolyn-19, 20, 42, 45, 57, 58, 59, 60, 61, 62  
Harrison, Richard-19, 20, 33  
Harvey, Carolyn-19, 20, 45  
Harvey, David-26  
Harvey, Francis-24  
Harvey, Jack-26, 68  
Hatton, Sally-24, 59  
Havens, Gene-24, 8, 50, 67, 68  
Hayes, Fred-19, 20, 50  
Hickman, Ralph-19, 20  
Hight, Marilyn-19, 20  
Hight, Virginia-13, 46  
Hill, Jack-24  
Hogan, Janice-19, 20, 42, 44, 55, 57, 58, 59  
Holbrook, Helen Ann-26, 27, 33, 46  
Holbrook, Jean-14  
Houck, Norvell-24, 50  
Huntington, Glen-24  
Inman, Coleen-24, 46  
Inman, Leland-14, 38  
Jacobs, Dale-19, 21  
Jacobs, Helen-26  
James, Fred-26  
James, Roger-14  
Janky, Betty-24, 42, 48, 49, 60, 61, 62, 63  
Janky, Harry-24, 58, 61, 62  
Jensen, Patricia-45  
Jordening, Merle-26, 68  
Johannes, Ella Mae-26, 46, 59  
Johnson, Darl-19, 21  
Johnson, Dorothy-19, 21, 42, 45  
Johnson, Gary-24  
Johnson, Glen  
Johnson, Tom-19, 21, 31, 42, 45, 8  
Johnson, Violet-24, 42, 45  
Johnston, Joyce-19, 21, 42, 45  
Johnston, Stanley-19, 21  
Keever, Jerry-24, 31, 67, 68, 70  
Keith, Percy-24  
Kelly, Patty-14, 45  
Kempton, Myron-24  
Kennedy, Edward-14, 42, 49, 50  
Kimball, Jean-42, 44, 27  
King, David-19, 21  
Kingery, Elanor-27  
Kingery, Freda-14, 46  
Kinne, Connie-24, 59  
Kinne, Ted-19, 21

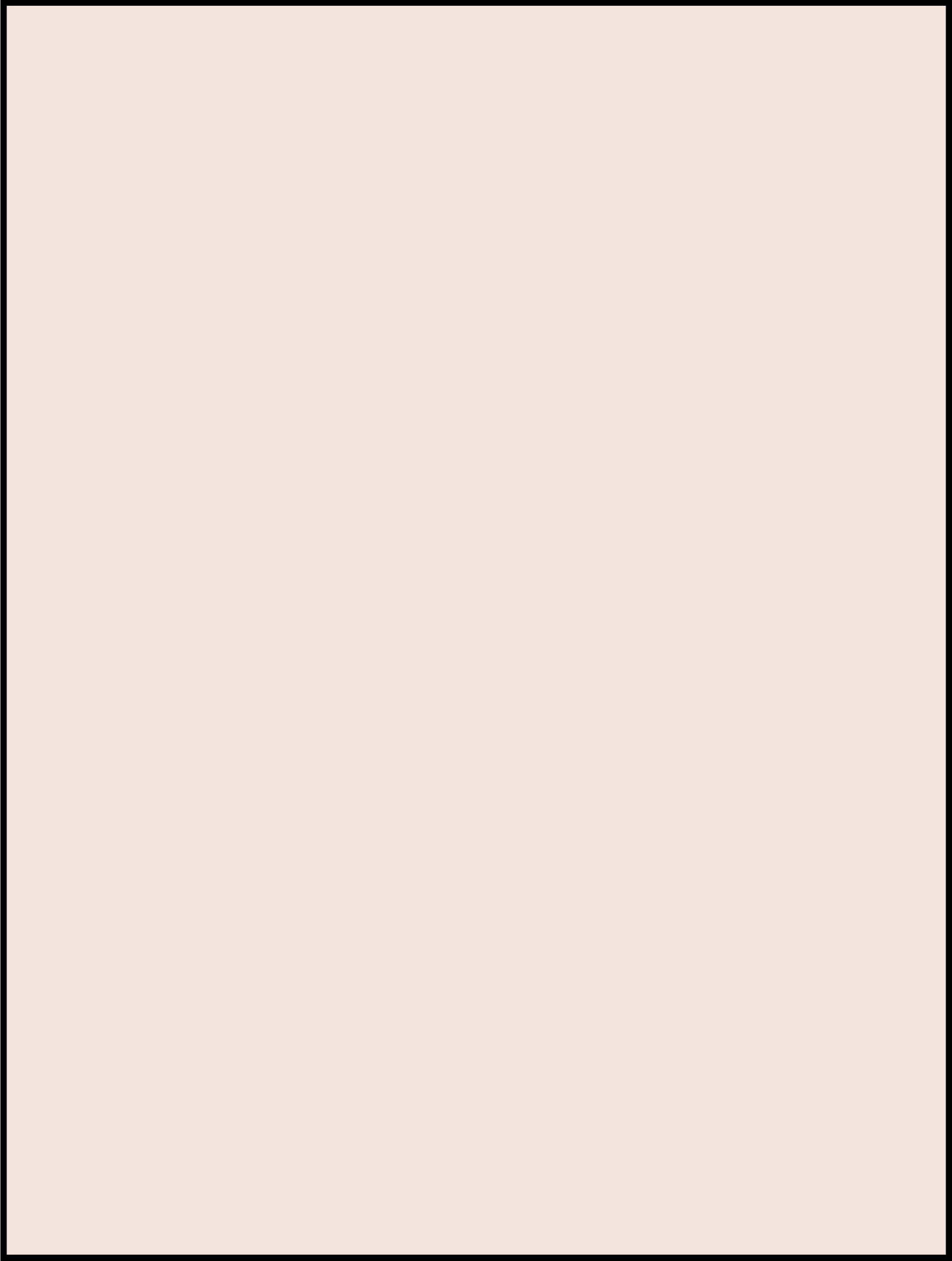
Kirkpatrick, Betty-24, 38  
 Kirkpatrick, Evelyn-19, 21, 46  
 Kneller, Charlotte-19, 21, 30, 45  
 Knerr, Eva-24, 44  
 Konecne, Dwane-17, 19, 21, 67  
 Lacy, Mary-27, 59  
 Lauber, Susan-14, 38, 42, 45, 54, 59, 60, 61, 62  
 Lawrence, Edward-8, 15, 31, 26, 33, 39, 50, 67, 68, 70  
 Lawrence, Ernestine-24, 45, 59  
 Lawrence, Janet-19  
 Lawrence, Mary-19, 21, 44  
 Lawrence, Philip-42, 27, 58  
 Lenz, Larry-27, 68  
 Lindhammer, Janice-19, 21, 32, 33, 42, 45, 57, 58, 59  
 Lines, Karen-24, 42, 45, 59, 60, 61  
 Little, Leon-8, 19, 21, 48  
 Long, Darwin-15, 8, 39, 42, 66, 68  
 Long, Ruth-15, 38, 45, 55, 58, 59  
 Lovely, Donald-15  
 Lovely, John-27, 38, 68  
 Lundquist, Doris-19, 21, 42, 46  
 Maas, Stanley-24, 48, 60, 61, 62  
 Maeder, Naomi-8, 19, 20, 2, 31, 44, 57, 58, 59, 60, 62  
 Mains, Duane-24, 33  
 Mayo, Glenn-24, 39, 54, 66, 68  
 McClelland, Art-15, 39, 66, 68, 70  
 McManis, Allen-25, 50  
 McMurray, Lotta-19, 21, 45  
 McMurray, Raymond-27  
 Means, Patricia-19, 22, 44, 60  
 Medders, Paul-25  
 Mercier, Cletus-19, 22, 57, 58, 60, 61  
 Miller, Bill-25, 67, 68  
 Miller, Shirley-19, 22, 45, 59  
 Moore, Doris-19, 22, 45  
 Mosier, Richard-25  
 Mosman, Verla-25, 42, 45, 59  
 Murdock, Carolyn-19, 22, 31, 45  
 Naven, Norman-27, 68  
 Neill, Marilyn-19, 22, 46, 55, 59  
 Nelson, Barbara-15, 38, 45  
 Nelson, Larry-15, 67, 68  
 Nelson, Marilyn-27, 46  
 Nelson, Ruby June-27, 46  
 Nolte, Donna-25, 44, 50, 60  
 Norcross, Gary-27, 61, 62  
 O'Connell, Bernadine-16, 44, 59  
 Odell, Dale-19, 22, 66, 68  
 Olive, Margie-19, 22, 42, 45, 50, 59  
 O'Riley, Beverly-25, 44, 59  
 Paul, Lorraine-19, 22, 46  
 Penn, Beverly-16, 43, 55, 60  
 Penn, Shirley-26, 45, 59  
 Pennington, Dorothy-27, 46  
 Pennington, Phyllis-27  
 Perry, Doyle-19, 20, 22, 57, 60  
 Peterson, Delois-19, 22, 31, 42, 44, 60, 61  
 Peterson, Roswell-19, 22, 48, 50  
 Piercy, Joyce-16, 38, 46  
 Piercy, Junior-25, 50  
 Preston, Conie-27, 45, 59  
 Preston, Ellen-25, 44  
 Preston, Shirley-19, 22, 45, 59  
 Quinn, Ellen Grace-25, 44  
 Quinn, Kathryn-19, 22, 38, 44, 55, 59  
 Reed, Edward-25  
 Resh, Katherine-19, 22, 44  
 Resh, Peggy-27, 46  
 Rhodes, Donna Rea-27, 42, 45, 50, 58, 59  
 Richardson, Marvis-8, 25, 42, 45, 50, 59, 61  
 Richey, Claire-19, 22, 45, 59  
 Richie, Delores-16, 31, 38, 42, 45, 48, 49, 60, 61, 62  
 Riegel, Donald-19, 20, 22, 39, 61, 63, 68  
 Riegel, Iola-19, 23, 42, 44, 57, 59, 66  
 Riley, Keith-19, 20, 23, 60, 61, 62, 66  
 Ritnour, Janice-27, 46  
 Roberts, Ray-25, 33  
 Rodman, Richard-19, 23, 50  
 Rogers, George-27  
 Rogers, Harley-27  
 Rubin, Ronald-25, 48, 50  
 Rumley, Helen-16, 38, 44  
 Russell, Earl-19, 23, 50  
 Russell, Jerry-27  
 Ryan, Jack-16, 38, 42, 48, 50, 55  
 Schafroth, David-27, 42  
 Schafroth, Joanne-19, 20, 23, 42, 45, 57, 58, 59  
 60, 61, 31, 55, 54, 63  
 Scott, Bob-19, 23, 38, 54, 67, 68  
 Scott, Glen-27  
 Selby, Elnor-27, 44  
 Selders, Barbara-16, 45, 50  
 Sherlin, Elizabeth-27, 45, 59, 60  
 Sickler, Douglas-8, 27, 33, 57, 58, 66, 68  
 Sickler, Gordon-19, 23, 68  
 Simmons, Donald-19, 23, 67, 68  
 Smith, Cleo-27  
 Smyth, Gwen-8, 17, 38, 42, 45, 57, 58, 59, 60, 61, 55, 63  
 Spring, Keith-19, 20, 23, 39, 50, 66, 68  
 Stanley, Dick-27  
 Steele, Russell-17, 48  
 Stillinger, June-8, 19, 23, 45, 61, 63, 68  
 Strait, Marilyn-17, 45  
 Sturdevant, Deloris-25, 46  
 Sturdevant, Phillip-19, 20, 23, 31, 39, 66, 68, 70  
 Sullivan, Edward-19, 23  
 Sullivan, Maurice-17, 39  
 Sullivan, Paul-25, 48  
 Talty, Joan-17, 1, 38, 42, 48, 49, 60, 61  
 Thomas, Alice Rae-27, 46, 54, 57, 58, 59  
 Thomas, Marilyn-25  
 Thomas, Robert-27, 68  
 Thomas, Shirley-19, 23, 42, 44  
 Thompson, Lola Mae-17  
 Timmerman, Lonnie-25, 50, 67, 68  
 Townsend, Harold-10, 25, 39, 66, 68  
 Townsend, Raymond-17  
 Tranburger, Francis-27, 60  
 Triplett, Joan-25, 45  
 Van Pelt, Howard-18, 39, 43, 54  
 Vernon, Buddy-19, 23, 61, 62  
 Walford, Wayne-25  
 Warrick, Ronald-18, 42  
 Waters, Larry-18, 39, 50, 66, 68  
 Waters, Tom-27, 68  
 Watts, Donna-18, 30, 38, 42, 45, 57, 58, 59, 60, 61, 63  
 Weeks, Mildred-25, 44  
 West, Alvus-19, 20, 23, 57, 58, 59, 67, 68  
 West, Bill-25  
 West, Edward-27  
 West, Erma-19, 23, 44  
 Westlake, Betty-19, 20, 23, 38, 44, 59  
 Westlake, Jerry-27  
 Westlake, Pat-18, 48  
 Wever, Kent-25, 54, 60, 61  
 Wildman, Nadine-18, 38, 43, 45, 54, 58, 59, 60  
 Wilkinson, Bobby-25, 67, 68  
 Wilmarth, Darleen-25, 50, 59  
 Wilmarth, Neill-18, 48, 50  
 Wilmarth, Pauline-27, 45, 59  
 Winston, Melvin-25, 58













MYERS *deep-tone* YEARBOOKS

THE PACEMAKERS OF QUALITY

MYERS AND CO. INC.

TOPEKA, KANSAS

