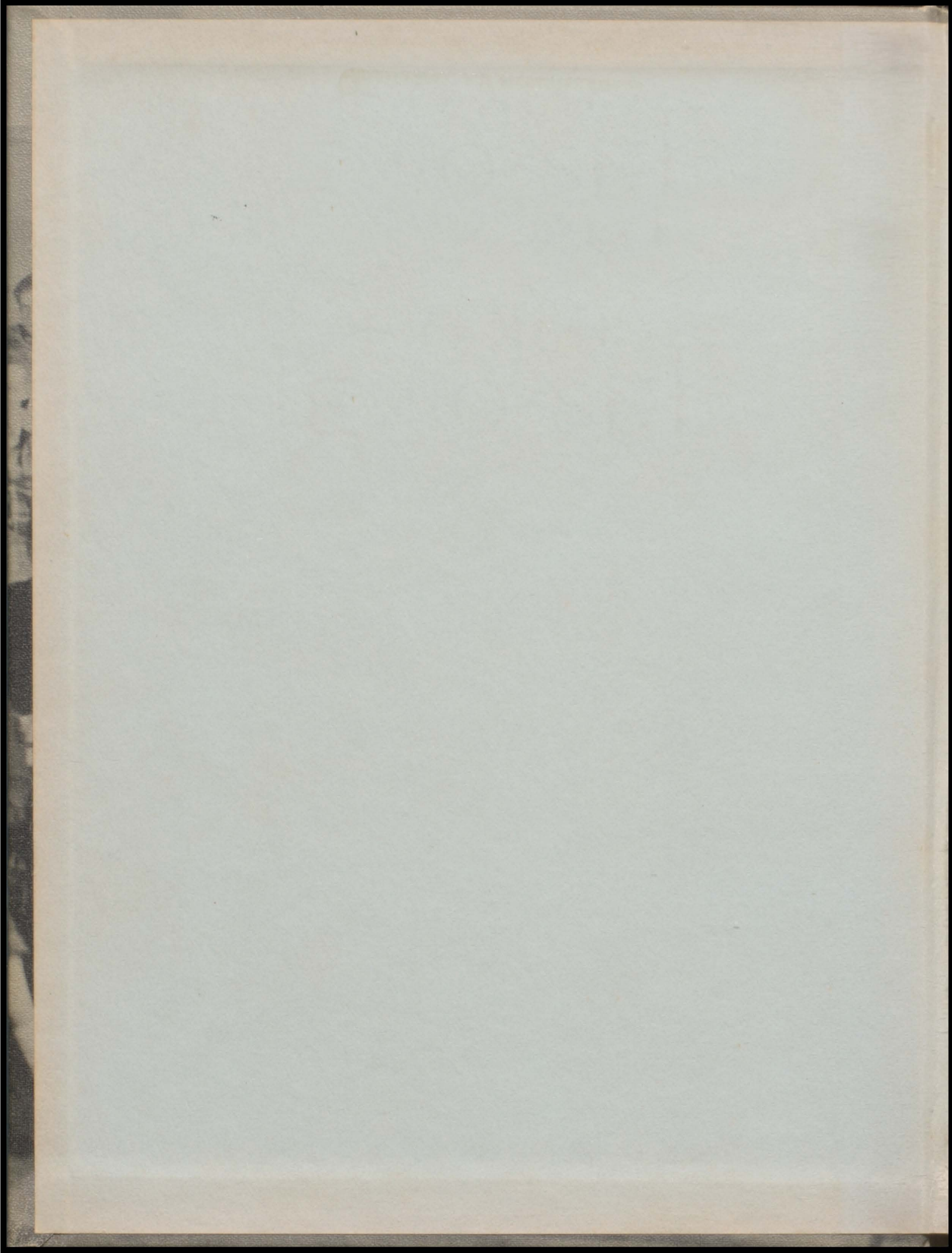
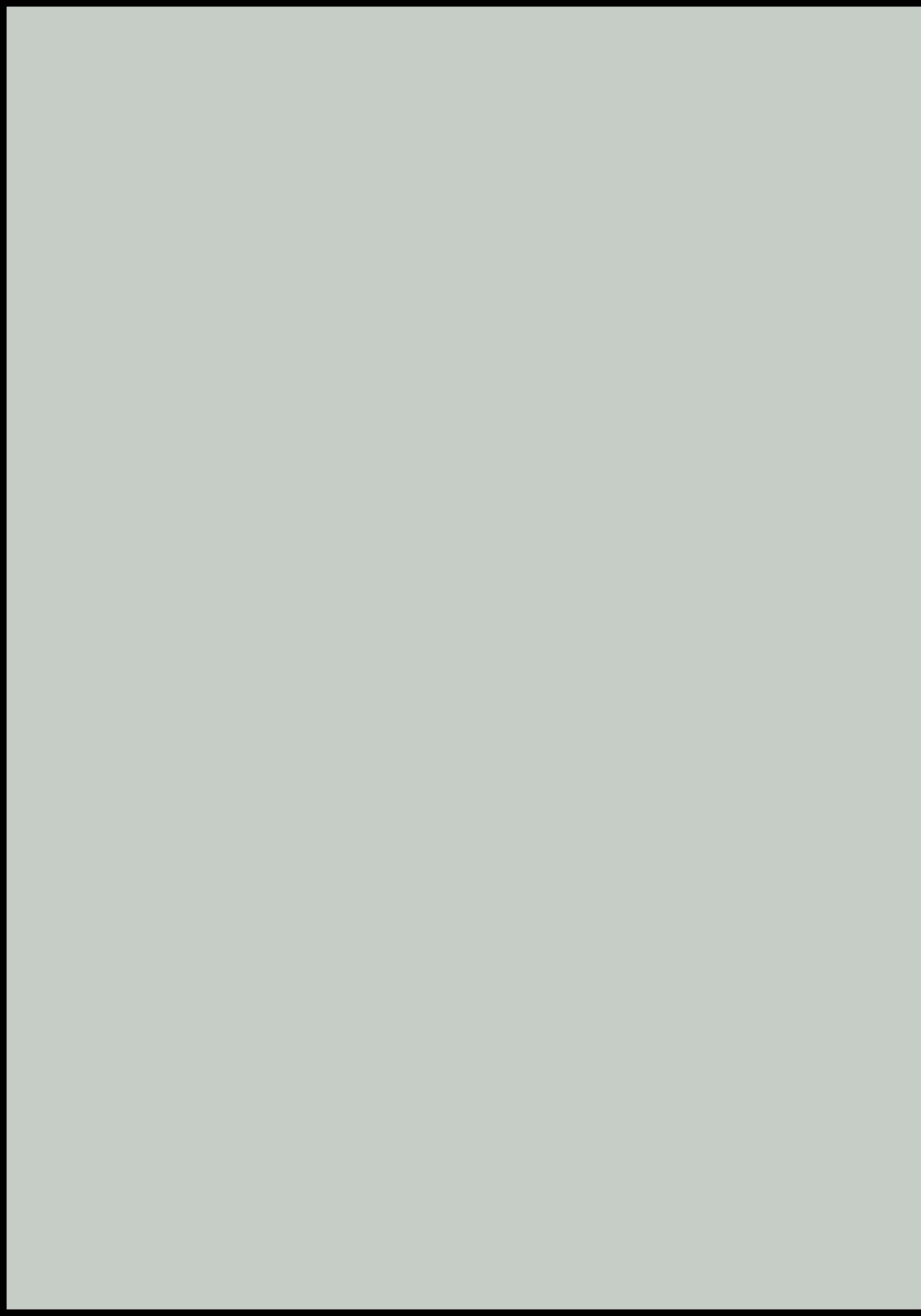


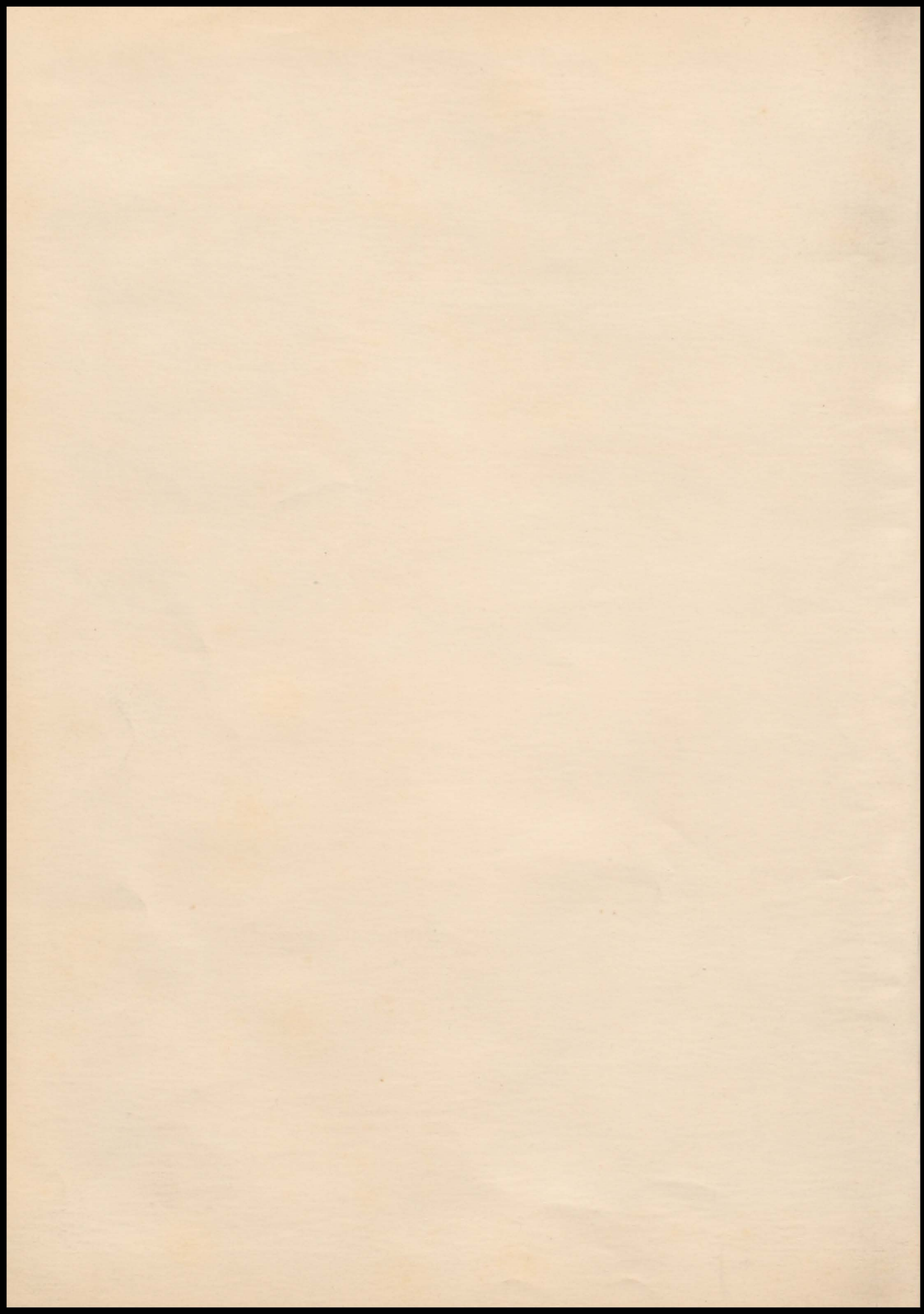
RED RAIDERS

19 53











FORWARD

"On behalf of the Yearbook Staff, we present your 1953 Red Raider. We hope it will be an accurate and vivid record of this school year and will bring many happy memories in the future."

Jo Schepartz

Editor

Dick Gibson

Business Manager

IN MEMORIAM



Delores Richie 1934-1952

For three and one-half years, a young and charming student lent cheer and happiness to the halls and classrooms of Corning High School. Always quietly pleasant, Delores was popular with students and faculty alike.

The school, the community and her family suffered an irreparable loss when a serious illness cut her young life short.

Our high school days and the days that follow will have been made richer by knowing her sunny personality and her cheerful disposition.



DEDICATION



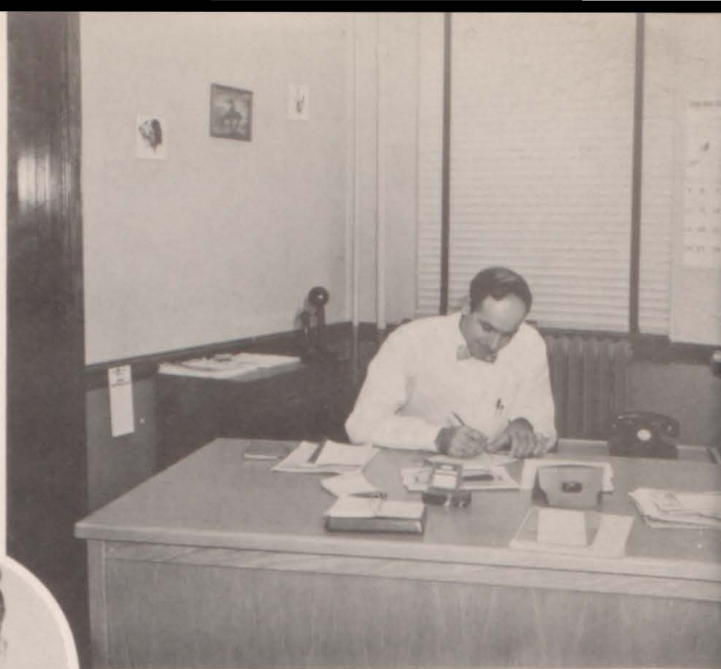
DONALD E. RHOADES

The Annual Staff, on behalf of the students and the faculty of Corning High School, fondly dedicate this Yearbook to Mr. Donald Rhoades, social science instructor, and, who was for two years, our high school principal. Mr. Rhoades, who is now the assistant registrar at S.U.I., will be remembered for his friendly interest in all phases of school activities and for his sincere desire to contribute to the personal well-being of the students.

His good-nature mixed with seriousness helped to overcome the many daily problems that arise within any school community. The students, the faculty, and the community benefited much from his all-too-brief stay within the Corning family.

ADMINISTRATION

D. E. RHOADES, Principal. Morningside College, Sioux City, B. A., Physical Education. State University of Iowa, M. A., Administration, Butler University, Indiana.



D. D. DUNLAVY, Superintendent of Schools. A. B., Drake University; M. S. E., Drake University.



HELEN PARKER
School Secretary

ANNA E. LYONS
School Board Secretary



FACULTY



DONALD HELMERS
Upper Iowa U., Iowa State Teachers College, B.A.; Graduate work, University of Iowa; Typing I, Bookkeeping, Junior Business, Sponsor, Junior Hi-Y, Operators Club and Junior Class.

ALICE PFANDER
Park College, B.A., Graduate Work, Colorado State College of Education; Sociology, World History, American Government; Sponsor, Y-Teens.



VIVIAN TURNER
Iowa State Teachers College, B.A., State University of Iowa, M.A., Graduate Work, Wisconsin U., and Columbia U., Dramatics, English 9, Speech; Sponsor, Thespians, Dramatics and Assemblies.



HOWARD LARIMER
Simpson College, B.A., Graduate work, Simpson; U.S. History, Sociology, American Government; Sponsor, Junior Class.

HAZEL GREEN
Upper Iowa U., B.A., Library Science, Graduate Work, U. of Iowa.



JOHN F. DOYLE
Northeastern U., Northeastern School of Law, Drake U., B.S. Drake U., M.S., Graduate Work, Iowa U., English, 10, American Literature; Remedial Reading; Annual Sponsor, Senior Class.



HOWARD TRAXLER
Drake University, B.S., Denver U., M.A., Graduate Work, Denver U., U.S. History, Guidance, Orientation; Senior Hi-Y Sponsor,



CHARLES UKNES
University of Iowa, B.S.; Consumers Math, Economics, Boys Physical Education, Coach of Football, Basketball and Track; Sponsor, "C" Club.

MAHLON COLLINS
Simpson, B.A., University of Iowa; Band, Sponsor of all band activities.



RALPH CURRIE
Tarkio College, B.S., University of Chicago, Colorado Teachers College, University of Colorado; Physics, General Science, Chemistry, Pre-Flight; Sponsor, Student Council and Sophomore Class.



FACULTY



HOWARD TRAXLER
Acting Principal, Second Semester.

MARY GAUTHIER
Ottumwa Heights; Marycrest
College, B. A.; Journalism,
Shorthand I and II, Senior Lit-
erature; Typing II; Sponsor,
Freshman class, School Paper.



LEE WACHENHEIM
Iowa State Teachers College,
B. A.; Graduate work, Colorado
State College of Education; Indus-
trial Arts, Agriculture IV; Spon-
sor "C" Club.

BARBARA HOUSH
Drake University B. A.; Vocal
Music; Sponsor, all Vocal Music
programs.



BONNIE UKNES
Simpson, B. A.; University of
Iowa, Graduate work; English
X.



MARGARET SHULTZ
Carthage College, B. A.; Grad-
uate, University of Chicago;
Normal University; Dekalb Tea-
chers; Biology, General Science,
Latin I, Sponsor, Junior Class.



CARL WHIPPLE
Iowa State College, B. S.; Voc-
ational Agriculture I, II, and
III; Sponsor, Cheerleaders, F. F. A.,
Freshman.

GERTRUDE HENTSCH
Carthage College, B. A.; Los
Angeles Junior College, Iowa
State; Homemaking I, II, III;
Sponsor, Junior Class.



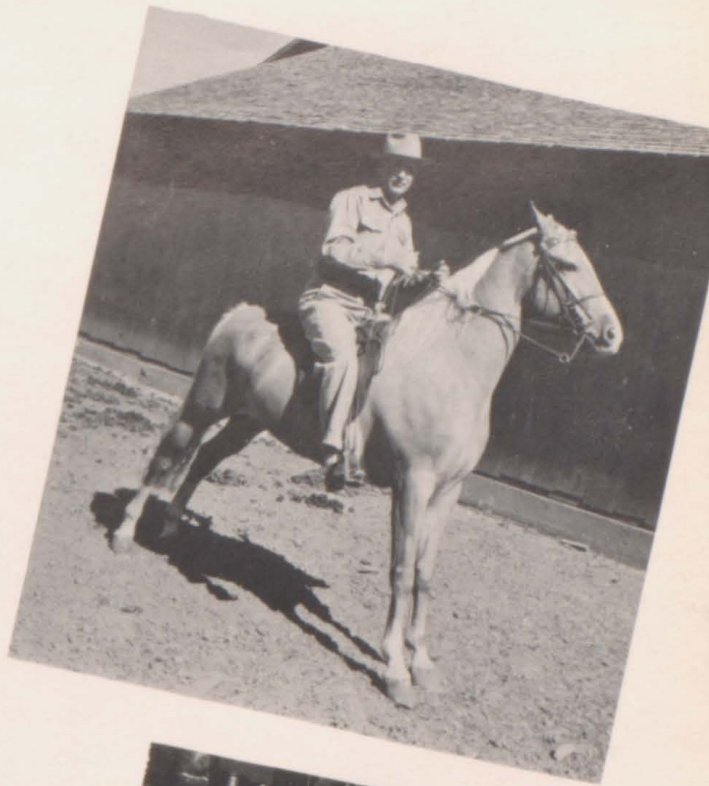
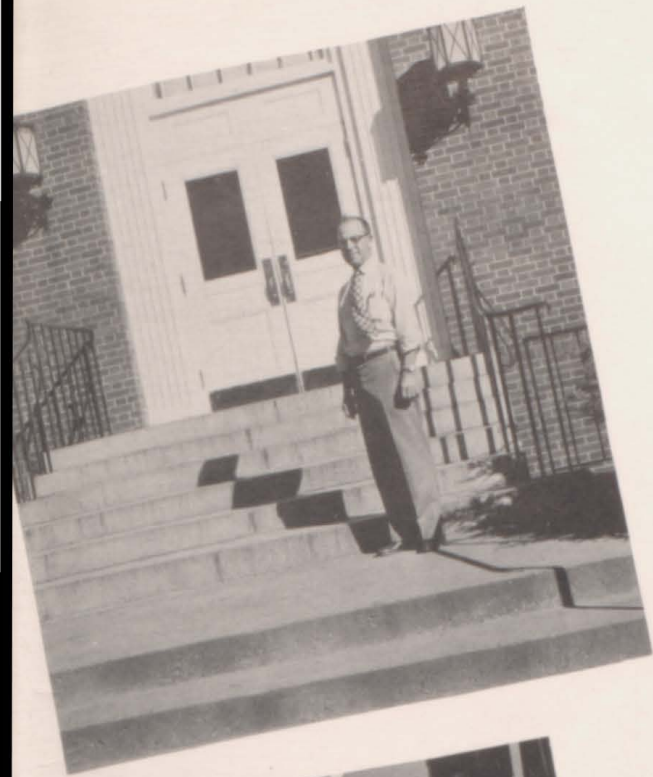
EVA KAZEBEER
Drake University, B. S.; Uni-
versity of Iowa, M. A.; Geom-
etry, Algebra I, III; General
Math; Sponsor, Y-Teens.



ALMIRA TURNER
Grinnell College, B. A.; Spon-
sor, G. A. A., Cheerleaders.

"THERE SHALL BE EDUCATION IN THIS LAND"

B
O
A
R
D
O
F
E
D
U
C
A
T
I
O
N



President
L. L. LAUBER

MAX M. LINES

MORRIS DUNHAM



RICHARD TALTY

DOW KEEVER



Student Council members enjoying a moment of relaxation during Convention at Ames.



President Ted Kinne, and Sponsor, Mr. Currie.

The Student Council is an organization in Corning High to promote better relationship between the student and faculty.

There are seventeen members who are selected from each home room. All members must have at least a "C" average.

The Council plays an active part in promoting the Homecoming, Armistice Day Program, and the Intramural Program.

The officers for 1952-53 are: President-Ted Kinne; Vice President-Keith Riley; Secretary-Ella Mae Johannes.

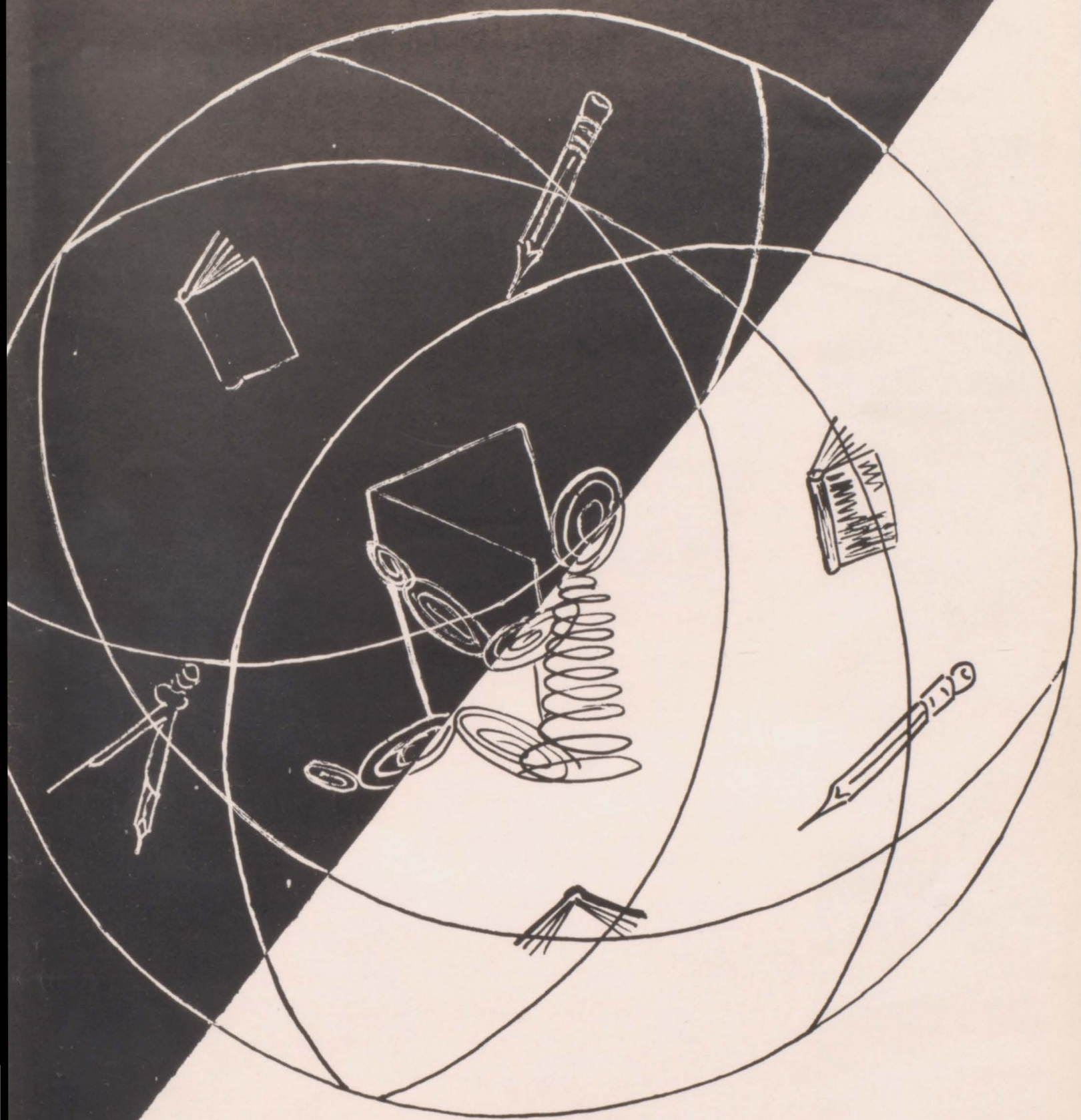


STUDENT COUNCIL



LEFT SIDE:
 Ted Kinne
 Norman Ferkins
 Mr. Currie
 Ella Mae Johannes
 Dale Odell
 Richard Bailiff
 Glenn Mayo
 Gordon Sickler

RIGHT SIDE:
 Keith Riley
 Gene Havens
 Donna Rhodes
 Jack Harvey
 Pat Jensen
 Kathryn Quinn
 Evelyn Kirkpatrick
 Edith Long
 Bill Gibson



CLASSES

THE SENIOR CINEMA

The Story of the Class of '53

In the fall of '49,
Many eager Freshman
Were certainly doing fine
As new students of C.H.S.

They didn't feel very nice
Tho' when initiation came,
And on Senior advice
Girls wore jeans and boys wore dresses.

The Sophomore year
Was an easy time
With games and cheer,
On field and floor.

The girls held up, too,
With stiff competition
When beauty queens were newly
Chosen for the year.

Their work had only begun,
For a theme of "South Pacific"
Was voted for the Prom,
And presented more work for all.

At last the Senior year arrives,
Full of promise for all.
Seventy Seniors with hope in their eyes,
Look forward to Graduation Day.

"We Shook the Family Tree"
Was put over with skill and ease.
Success in Music, Sports and Dramatics we see,
Prove this class can hold its own.

Now in this last year,
They review the past
And feel they have nothing to fear
As they step out to face the world,
Brave--Confident--Unafraid.

Participating in glory quiet and loud,
Y-Teens, Hi-Y, F.H.A., and others,
Helped to make a gay crowd
To add to the entertainment field.

The Junior year, with all its glory,
Showed bright with promise.
But the class enrollment story
Slowly declined as time progressed.

Gay and hardworking, this class
Proceeded to work at games.
Everyone contributing, each lad and lass
To the ultimate goal--the Jr.-Sr. Prom,

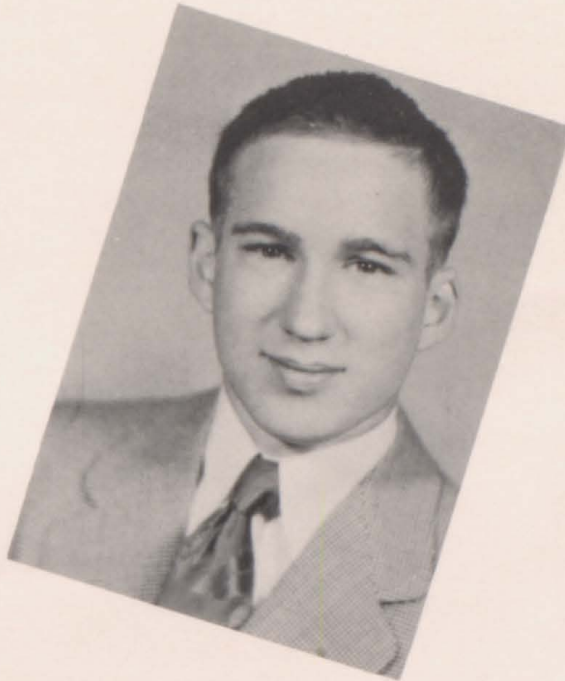
Still full of energy, one fine day,
To make all the money they could
The "Curious Savage" as Junior Class Play
Was presented to all the school.



CLASSES
OFFICERS



MARY JANICE HOGAN "Hoag" Class President
GAA 1, 2, 3, 4-Pres. 3; Pep Club 1, 2, 3-Pres. 3;
Annual Staff 3, 4; Paper Staff 4; FHA 1, 2; Office
Girl 3, 4; Mixed Chorus 3, 4; Intra-mural Basketball
3, 4; Thespians 3, 4; Girls Glee Club 1, 2, 3, 4;
Speech Activities 2, 3, 4; National Honor Society
3, 4; Small Vocal Groups 3, 4; Music Soloist 4; All
State Chorus 4; Junior Class Play 3; Senior Class
Play 4; Honor Roll 1, 2, 3, 4.



DONALD A. RIEGEL "Smilin" Class Vice-President
Hi-Y 3, 4; "C" Club 3, 4; Paper Staff 4; Football
2, 3, 4; Inter-mural Basketball 1, 3, 4; Basketball
2, 3, 4; Track 2, 3, 4; Band 1, 2, 3, 4; Boys Glee Club
1; Mixed Chorus 1; Class Officer 1, 3, 4; Swing Band
1, 2, 3, 4; Pep Band 1, 2, 3, 4; Small Vocal Group 1;
Operetta 1; Korning Kapers 1; Music Soloist 1, 2, 3, 4;
All State Band 3, 4; State Music Contest 1, 2, 3, 4;
Tarkio Festival 1; Cavalcade of Music 1; Drake
Relays 1; Honor Roll 1, 2, 3, 4.



JUNE LORENE STILLINGER Class Secretary
Y-teens 1, Vice president 2, secretary 3, president
and district vice president 4; Pep Club 1; Annual
Staff 4; F. H. A. 1, 2; Student Council 3; Basketball
(Intramural) 3; Band 1, 2, 3; State Music Contest
2, 3; Cavalcade of Music 2; Drake Relays 2; Honor
Roll 1, 2, 3, 4.



DOYLE DUANE PERRY Treasurer
Band 2, 4; Boys Glee Club 2, 4; Mixed Chorus 2, 4;
Class officer 4; Pep Band 3, 4; Small Vocal Group
2, 4; Music Soloist 4; All State Chorus 2, 3, 4; State
Music Contest 2, 3, 4; Junior Class Play 3; Senior
Class Play 4; Honor Roll 1, 2, 3, 4.



JOYCE ANN BAILIFF
 Y-Teens 1, 2, 3, 4; G. A. A. 1, 2; Pep Club 1, 2; F. H. A. 1; Intra. Basketball 1, 2, 3, 4; Band 1, 2; Korning Kaper 1; State Music Contest 1, 2; Drake Relays 1, 2; Honor Roll 1, 2, 3, 4.

CAROL BIXLER "Bix"
 Y-Teens 1, 2, 3, 4; G. A. A. 1, 2; Pep Club 2, 3; F. H. A. 1, 2; Inter. Mural 11, 12; Speech Activities 12; Student Librarian 10, 11; Honor Roll 10, 11.



CHERRYL BIXLER "Bix"
 Y-Teens 1, 2, 3, 4; G. A. A. 1, 2; Pep Club 1, 2, 3; Annual Staff 4; Paper Staff 4; F. H. A. 1, 2; Executive Board 2, 3; Annual Royalty 2; Intermural 3, 4; Glee Club 1, 2, 3, 4; Speech Activities 3; All State Chorus 4; State Music Contest 2, 3; Honor Roll 1, 2, 3, 4; Small Music Groups 3, 4.

BETTY JEAN BOELLING "Jean"
 Y-Teens 1, 2, 3; G. A. A. 4; Pep Club 1, 2, 3; Annual Staff 4; F. H. A. 1, 2; Intermural 3, 4; Band 1, 2, 3, 4; Girls Glee Club 1; Student Librarian 1, 2; Pep Band 1, 2, 3, 4; State Music Contest 2, 3, 4; Canalcaade of Music 2; Drake Relays 1, 2; Honor Roll 1, 2, 3, 4.

SENIOR CLASS



RICHARD EARL BOHANAN "Cap"
 Hi-Y 2, 3, 4; C-Club 3, 4; Annual Staff 4; Paper Staff 4; Football 1, 2, 3, 4; Intermural 2, 3, 4; Basketball 4; Thespians 3, 4; Speech Activities 3; Student Librarian 3, 4; Junior Class Play 3; Honor Roll 3, 4; Operators Club 3.



WAYNE BROWN "Garf"
 F. F. A. 1, 2, 3, 4.

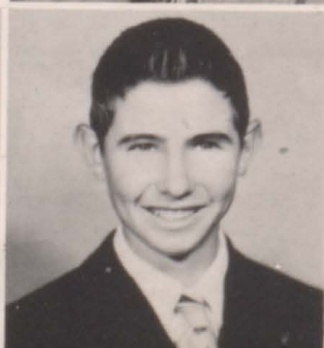
BARBARA LYNNETTE BURGAN "Barb"
 Y-Teens 1, 2, 3, 4; G. A. A. 1; Pep Club 1; Annual Staff 4; Band 1, 2, 3, 4; Glee Club 1, 2, 3, 4; Mixed Chorus 1, 2, 3, 4; Pep Band 1, 2, 3, 4; Small Vocal Groups 1, 2, 3, 4; Operetta 2; Korning Kapers 2; Accompanist 1, 2, 3, 4; Music Soloist 3, 4; All State Chorus 3; State Music Contest 1, 2, 3, 4; Tarkio Festival 1; Cavalcade of Music 1; Drake Relays 1, 2; Honor Roll 3, 4; Crston Festival 2, 3, 4.



CARMEN CLEMENT "Clementine"
 F. F. A. 1, 2, 3, 4, officer 4; Boys Glee Club 1, 2, 3, 4; Mixed Chorus 1, 2, 3, 4; Small Vocal Groups 3, 4; Operetta 1; Korning Kapers 1; Music Soloist 4; All-State Chorus 3, 4; State Music Contest 1, 2, 3, 4; Honor Roll 3, 4.

WELDON CHARLES COONEY "Coon"
 F. F. A. 1, 2, 3, 4, Vice-Pres. 3; Paper Staff 4; Student Council 1; Intra. Basketball 2, 3, 4; Honor Roll 1.

ILA DAVID
 G. A. A. 2, 3; Intra. Basketball 3, 4; Honor Roll 3, 4.



MARVIN NEAL DHONE "Murt"
 Hi-Y 2, 4; Student Council 1; Basketball 2; Intra.
 Basketball 3, 4; Track 2; Boxing 2, 3.

DARWIN D. DOTSON "Dot"
 Hi-Y 1, 2, 4; FFA 1, 2, 3; Intra. Basketball 3, 4; Track
 1; Boys Glee Club 2, 3; Mixed Chorus 2, 3, 4; Small
 Vocal Group 1; Music Soloist 4; All State Chorus
 3, 4; Operators Club 1, 2, 3, 4.

GALEN GENE DRENNAN "Buck"
 Hi-Y 2, 3, 4, Treas. 3, 4; Football 1, 2, 3; Intra.
 Basketball 2, 3, 4; Boys Glee Club 3; Mixed Chorus
 3; State Music Contest 3; Honor Roll 1, 2, 3, 4.

JERRY FRESHOUR
 Operators Club 1, 2, 3.



SENIOR CLASS

MARVIN LINN FULLER "Fuller"
 FFA 1, 2, 3, 4, Treasurer 3, Secretary 4; Football 2;
 Inter. Basketball 3, 4; Boxing 1; Honor Roll 1.



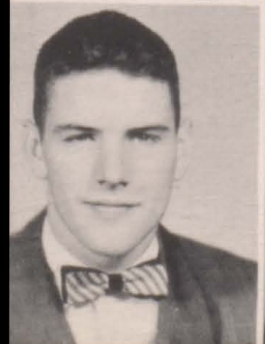
JANICE RUTH GASKILL "Jan"
 Y-Teens 1, 2, 3, 4; Pep Club 3; Annual Staff 4; FHA
 1, 2; Student Council 3; Band 1, 2, 3, 4; Glee Club
 1, 2, 3, 4; Small Vocal Group 1, 2, 3, 4; Accompanist
 3, 4; Music Soloist 4; All State Chorus 3; State
 Music Contest 3; Cavalcade of Music 2; Drake Re-
 lays 1, 2; Honor Roll 1, 2, 3, 4.

JANICE LEE GEARHEART "Jan"
 Y-Teens 1, 2, 3, 4, Treas. 4; G. A. A. 2; Pep Club
 1, 2; F. H. A. 1, 2; Basketball Royalty 2; Intra. Bas-
 ketball 3; Honor Roll 1, 2, 3, 4.

RICHARD EUGENE GIBSON "Gib"
 Hi-Y 2, 3, 4; Chaplain 3; Pres. 4; Chaplain S. W.
 Iowa Dist. 4; C-Club 3, 4; Sec-Treas. 3; Annual
 Staff 3, 4; Bus. Mgr. 3, 4; Executive Board of Youth
 Center 3, 4; Football 2, 3, 4; Basketball 2, 3, 4; Glee
 Club 1; Mixed Chorus 1; National Honor Society 3, 4;
 Class Pres. 3, Treas. 1; Operetta 1; Korning Kapers
 1; Honor Roll 1, 2, 3, 4; Wrestling 3.

DELORIS MARIE HALEY "Dimples"
 Y-Teens 3, 4; Pep Club 2; Intra. Basketball 3, 4;
 Glee Club 1; Accompanist 1; Honor Roll 3, 4.

TWYLLA PAULINE HALEY "Snooks"
 G. A. A. 1, 2, 3, 4; Pep Club 1, 2; F. H. A. 1; Intra.
 Basketball 3, 4.





CAROLYN HARRISON "Irma"

Y-Teens 1, 2, 3, 4; G. A. A. 1, 2; Pep Club 1, 2; Annual Staff 4; F. H. A. 1, 2; Basketball (intra-mural) 3; Band 1, 2, 3, 4; Glee Club 1, 2, 3, 4; Mixed Chorus 3, 4; Speech Activities 4; Cheerleader 2; Pep Band 3, 4; Small Vocal Group 3, 4; Korning Kapers 2; Accompanist 3; Music Soloist 4; State Music Contest 1, 2, 3, 4; Cavalcade of Music 2; Drake Relays 1, 2.

RICHARD EUGENE HARRISON "Diz"

Hi-Y 2; F. F. A. 2, 3, 4; Paper Staff 4; Football 1, 2; Basketball (intra-mural) 3, 4; Track 1, 2; Boxing 1.



CAROLYN HARVEY "Blondie"

Y-Teens 2, 3, 4; F. H. A. 1, 2; Basketball (intra-mural) 11, 12.

SENIOR CLASS



FRED HAYES "Fritz"
F. F. A. 1, 2, 3.



RALPH ALBERT HICKMAN "Hick"
F. F. A. 1, 2, 3, 4.

MARILYN JOYCE HICHT "Marky"
Y-Teens 1, 2, 3, 4; Paper Staff 4; F. H. A. 1, 2;
Student Librarian 2; Honor Roll 1, 2, 3, 4.



DALE LEROY JACOBS
Hi-Y 1; Track 1, 2.

DARL DWIGHT JOHNSON "Ole"
Hi-Y 2, 3; Football 3; Boxing 2, 3, 4; Wrestling 3, 4.

DOROTHY MYRTLE JOHNSON "Johnie"
Y-Teens 2, 3; G. A. A. 2, 3; Pep Club 2, 3; F. H. A. 2; Basketball (intra-mural) 3, 4; Honor Roll 2, 3, 4.



THOMAS GLENN JOHNSON "Sawdust"
 Hi-Y 2, 3, 4; C-Club 3, 4; Paper Staff 4; Student Council 3; Football 3, 4; Basketball 2, 3, 4; Track 2, 3, 4; Thespians 3, 4; Speech Activities 3; Junior Class Play; Honor Roll 3.

STANLEY PAUL JOHNSON "Zeke"
 FFA 1, 2, 3, 4; Football 3, 4; Basketball (Intra-mural) 4; Track 3.



THEODORE KINNE "Kidney"
 Hi-Y 3, 4, Chaplain 4; Paper Staff 4, Editor; Student Council 4, President; Intra-mural Basketball 1, 2, 3, 4; Basketball 3, 4; Track 3; Thespians 3, 4, vice-president 4; Speech Activities 3; Student Librarian 3, 4; Junior Class Play; Senior Class Play; Honor Roll 1, 2, 3, 4.



SENIOR CLASS

EVELYN MAE KIRKPATRICK "Evie"
 Y-Teens 1, 2; Annual Staff 4; Paper Staff 4; FHA 1, 2, 3, 4, Officer 3, 4; Student Council 4; Intra-mural Basketball 3, 4; Glee Club 3; Speech Activities 3; Student Librarian 1, 2; Honor Roll 1, 2, 3, 4.



CHARLOTTE J. KNELLER
 Y-Teens 2, 3, 4; Pep Club 1; Annual Staff 4; Paper Staff 4; FHA 1; Homecoming Royalty 3.

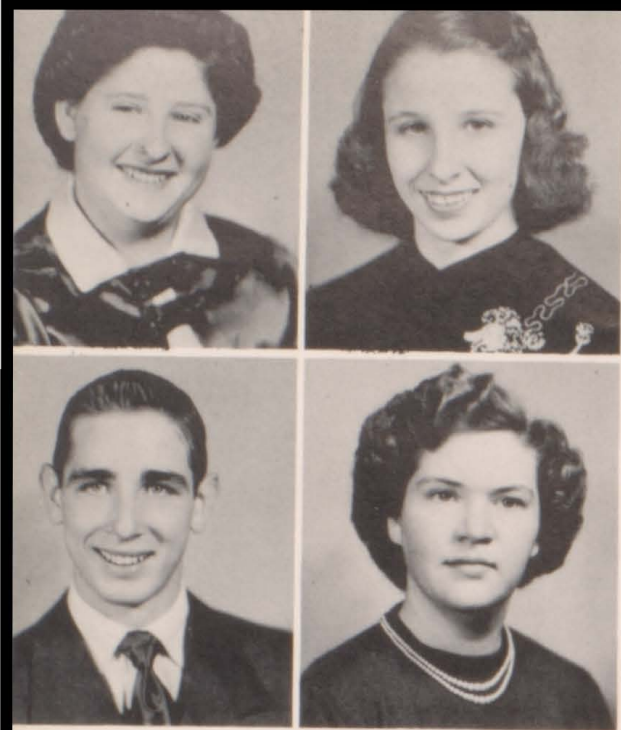
MARY LUETTA LAWRENCE "Lu"
 Y-Teens 1, 2; GAA 1, 2, 3, 4; Pep Club 1, 2; Annual Staff 4; Paper Staff 4; FHA 1, 2; Intra-mural Basketball 3, 4; Band 1; Student Librarian 1; Korning Kapers 1; Honor Roll 1, 2, 3, 4.

JANICE LEE LINDHAMMER "Teddi"
 Y-Teens 1, 2, 3, 4; GAA 1; Pep Club 2, 3; Annual Staff 3, 4; FHA 1, 2; Annual Beauty Queen 3; Band 1, 2; Glee Club 1, 2, 3; Mixed Chorus 3, 4; Pep Band 1; Small Vocal Group 1, 3, 4; Korning Kapers 2; State Music Contest 1, 3, 4; Tarkio Festival 1; Cavalcade of Music 1; Drake Relays 1; Honor Roll 1, 2, 3, 4.

LEON LITTLE "Leon Big"
 FFA 1, 2, 3, 4, Pres. 3; Student Council 1, 2, 3, Vice-Pres. 2; Football 2; Intra-mural Basketball 3, 4; Honor Roll 1, 2, 3.

DORIS MAE LUNDQUIST "Dori"
 Y-Teens 1, 2; Pep Club 2, 3; Annual Staff 4; Paper Staff 4, Ass't. Editor; Speech Activities 3; FHA 1, 2, 3, 4, Sec. 2, Pres. 3; Intramural 3, 4; Honor Roll 2, 3, 4.





LOTTA MAE McMURRAY "Polly"
Y-Teens 1, 2, 3, 4; F. H. A. 1; Glee Club 2; Student Librarian 2, 3, 4; Honor Roll 3, 4.

PATRICIA ANN MEANS
G. A. A. 1, 2, 3; Pep Club 1; F. H. A. 1, Officer; Carnival Royalty 2; Basketball (intra-mural) 3; Band 1, 2, 3; State Music Contest 3; Cavalcade of Music 1; Drake Relays (music) 1; Operators Club 1.

CLETUS ROMAINE MERCIER "Clete"
Pep Club 2; Annual Staff 3, 4; Football 4; Basketball (intra-mural) 2, 3, 4; Track 2; Band 1, 2, 3, 4; Glee Club 1, 2, 3, 4; Mixed Chorus 1, 2, 3, 4; Speech Activities 2, 3; Swing Band 1, 2, 3, 4; Pep Band 1, 2, 3, 4; Small Vocal Groups 2, 3; Operetta 2; Senior Play 4; Small Band Groups 1, 2, 3, 4; Korning Kapers 2; Music Soloist 1, 2, 3, 4; All-State Chorus 1, 2; State Music Contest 1, 2, 3, 4; Tarkio Festival 1; Drake Relays (music) 1; One Act Play 2; Honor Roll 1, 2, 3, 4; Senior Class Play 4.

DORIS MAE MOORE "Poodle"
Y-Teens 1, 2, 3; G. A. A. 4; Paper Staff 4; F. H. A. 1, 2; Student Council 4; Intra-mural 3, 4; Glee Club 1; Junior Class Play 3; Honor Roll 2, 3.

SENIOR CLASS



CAROLYN MURDOCK "Tex"
Y-Teens 1, 2, 3; G. A. A. 4; Pep Club 1, 2; Annual Staff 4; Paper Staff 4; F. H. A. 1, 2; Homecoming Royalty 1; Basketball (intra-mural) 3, 4; Honor Roll 1, 2, 3; Office Girl 2.



MARILYN JOYCE NEIL "Marn"
Y-Teens 1, 2; Paper Staff 4, Assistant editor; F. H. A. 1, 2, 3, 4, Treasurer 3; Girl's Glee Club 3; Speech Activities 2, 3, 4; Student Librarian 2, 3, 4; Honor Roll 1, 2, 3, 4.

DALE CLIFFORD ODELL "Digger"
Hi-Y 2, 3, 4; Paper Staff 4; Student Council 1, 2, 3; Football 2, 3, 4; Basketball (intra-mural) 2; Honor Roll 1, 2, 3, 4.



LORRAINE ANN PAUL
Y-Teens 1, 2; F. H. A. 1, 2, 3, 4; Basketball (intra-mural) 4.

DELORIS VERN PETERSON "Pete"
Y-Teens 1; G. A. A. 1, 2, 3, 4; Pep Club 1, 2, 3; F. H. A. 1; Homecoming Queen 4; Basketball (intra-mural) 3, 4; Class treas. 4; Cheerleader 1, 2, 3, 4; Korning Kapers 1; Music Soloist 1, 2, 3, 4; State Music Contest 1, 2, 3, 4; Tarkio Festival 1; Cavalcade of Music 1; Drake Relays (music) 1, 2; Honor Roll 3, 4; Operators Club 1, 2, 3; Creston Festival 2, 3, 4.

SHIRLEY MAE PRESTON
Y-Teens 2, 3; F. H. A. 1, 2; Honor Roll 1, 2, 3, 4; Basketball (intra-mural) 3; Girl's Glee Club 2, 3.



KATHRYN JEAN QUINN "Kay"
 G. A. A. 2, 3, 4, Sec. 3, Pres. 4; Pep Club 2; Annual Staff 3, 4; Paper Staff 4; F. H. A. 1; Student Council 3, 4; Intra. Basketball 3, 4; Glee Club 2, 3; Thespians 3, 4; Speech Activities 1, 2, 3, 4; National Honor Society 3, 4; Jr. Class Play; Sr. Class Play; Honor Roll 1, 2, 3, 4.

KATHERINE RESH "Kathy"
 Y-Teens 1; G. A. A. 3, Treas. 3; F. H. A. 1, 2, 4; Homecoming Royalty 4; Intra. Basketball 3, 4.

CLAIRE N. RICHEY
 Y-Teens 1, 2, 3; Cabinet 4; G. A. A. 1, 2; Pep Club 1; Intra. Basketball 3; Glee Club 1, 2, 3, 4; Honor Roll 1, 2.

IOLA MARIE RIEGEL "Dizzy"
 Y-Teens 1, 2; G. A. A. 1, 2, 3, 4, Treas. 4; Pep Club 2, 3; F. H. A. 1, 2; Intra. Basketball 3; Glee Club 1, 2, 3, 4; Mixed Chorus 3, 4; Small Vocal Group 1, 2, 3; State Music Contest 1, 2, 3, 4; Honor Roll 2.



SENIOR CLASS

KEITH ARTHUR RILEY
 Hi-Y 3, 4; C-Club 4; Student Council 1, 3, 4; Football 3, 4; Intra. Basketball 1, 2, 3, 4; Band 1, 2, 3, 4; Class Officer 2, 3; Swing Band 1, 2, 3, 4; Pep Band 1, 2, 3, 4; State Music Contest 1, 2, 3, 4; Cavalcade of Music 1; Drake Relays 1, 2; Honor Roll 1, 2, 3, 4.

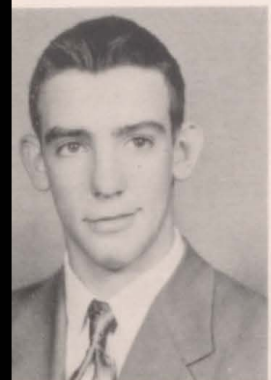
ROSEMARY HAZEL RUSSEL "Russ"
 F. H. A. 4; Intra. Basketball 3, 4; Band 3; Glee Club 1, 3; Mixed Chorus 1; Class Officers 1, 2; Jr. Class Play; Honor Roll 4.

JO ANNE FAYOLA SCHAFFROTH "Jo"
 Y-Teens 1, 2, 3, 4, Cabinet 3; G. A. A. 1, 2; Pep Club 1, 2, 3; Annual Staff 3, 4, Art Editor 3, Editor-in-Chief 4; Paper Staff 4; F. H. A. 1; Basketball Royalty 3; Annual Royalty-Beauty Queen 4; Intra. Basketball 1, 2; Band 1, 2, 3, 4; Glee Club 2, 3; Mixed Chorus 2, 3, 4; Thespians 3, 4; Speech Activities 1, 2, 3, 4; Speech Contest 2, 3, 4; Jr. Class Play; Sr. Class Play; All-school Play 3; One Act Play 2; Class President 1; National Honor Society 3, 4; Small Vocal Groups 2, 3; Korning Kapers 2; Music Soloist 2, 3, 4; State Music Contest 1, 2, 3, 4; Creston Festival (Band) 3, 4; Vocal 3; Cavalcade of Music 1; Band Queen 4; Drake Relays 1, 2; Honor Roll 1, 2, 3, 4.

ROBERT HULL SCOTT "Hully"
 Hi-Y 2, 3, 4; Annual Staff 4; Paper Staff 4; Youth Center Executive Board 2, 3, 4, Sec. 4; Football 2, 3, 4; Basketball 1, 3, 4; Track 3; Thespians 3, 4, Pres. 4; Contest Play 2; Jr. Class Play; Sr. Class Play; Operators Club 3; One Act Play 3; All School Play 3.

GORDON DALE SICKLER "Gunnar"
 Hi-Y 2, 3, 4; Paper Staff 4; Student Council 3, 4; Football 2; Intra. Basketball 1, 2, 3, 4; Basketball 1, 2, 3, 4; Track 3, 4; Honor Roll 1, 2, 3, 4.

DONALD DEAN SIMMONS "Deano"
 Hi-Y 2, 3, 4; Paper Staff 4; Football 2, 3; Basketball 1, 2, 3, 4; Track 2, 3; Glee Club 1; Korning Kapers 1; Honor Roll 1, 2, 3, 4.





PHILLIP JOHN STURDEVANT "Stud"
 Hi-Y 4; C Club 3, 4; FFA 1, 2; Paper Staff 4; Foot-
 ball 3, 4; Basketball 2, 3, 4.

EDWARD SULLIVAN "Sully"
 FFA 1, 2, 3; Boys Glee Club 2; Mixed Chorus 2;
 Honor Roll 1, 2, 3, 4; Operators Club 1, 2, 3.



SHIRLEY THOMAS "Tom"
 Y-Teens 1, 2; G. A. A. 1, 2, 3, 4; Pep Club 1, 2, 3;
 Annual Staff 4; FHA 1, 2; Intra-mural Basketball
 3, 4; Girls Glee Club 1, 2, 4; Speech Activities 4;
 State Music Contest 1; Honor Roll 3, 4.



Class Flower - Pom-Pom M

SENIOR CLASS

CARLTON H. VERNON "Buddy"
 Hi-Y 1, 2, 3, 4; Annual Staff 4; Paper Staff 4; Intra.
 Basketball 1, 2, 3, 4; Basketball 1, 2, 3; Track 1, 2;
 Band 1, 2, 3, 4; Swing Band 1, 2, 3, 4; Pep Band 1, 2,
 3, 4; Accompanist 1; Music Soloist 1, 2, 3, 4; State
 Music Contest 1, 2, 3, 4; Tarkio Festival 1; Caval-
 cade of Music 1; Drake Relays 1, 2; Sr. Class Play;
 Creston Festival 2, 3; Honor Roll 3, 4.

ALVUS WEST
 Small Staff 4; Football 2, 3, 4; Track 1; Glee Club
 1, 2, 3, 4; Mixed Chorus 1, 2, 3, 4; Paper Vocal
 Group 2, 3, 4; Music Soloist 2, 3, 4.

ERMA LOUISE WEST "Erm"
 Y-Teens 1, 2; G. A. A. 1, 2, 3, 4; Pep Club 1; F. H.
 A. 1, 2, 3; Intra. Basketball 3; Band 1; Glee Club
 1, 3, 4; Mixed Chorus 4.

BETTY WESTLAKE "Bett"
 Y-Teens 1, 2; G. A. A. 3, 4, Vice-Pres. 3, Sec. 4;
 Pep Club 1; Annual Staff 4; Paper Staff 4; F. H. A.
 1, 2; Intra. Basketball 3; Glee Club 1, 2, 3; Class
 Secretary 3; Honor Roll 1, 2, 3, 4.



J U N I O R S

Fred Arbuckle
Arnold Beath
Richard Bailiff



Charlotte Berschied
Darlene Boham



Carlton Bohanon



Marilyn Bohanon



Bernice Boswell
Ronald Brenton



Sharon Campbell
Larry Carmichael
Hazel Case



Dean Curtis
Gene Dillon
LeeRoy Dotson
Gary Easterlie



Billy Farris
Phyllis Fishell
Jean Gearheart
Joan Goldsmith
Earl Hall



This is the working class. They work, work, work in order to put on the biggest event of the year--the Junior-Senior Prom.

They contribute boys to the football and basketball teams. They are in all activities, clubs, and music. All of this work comes during their Junior year so they can wait for the Prom the following Juniors put on for them.



Jerry Keever
Myron Kempton



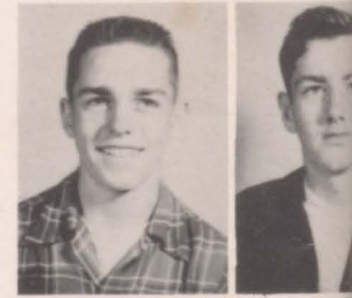
Connie Kinne
Betty Kirkpatrick



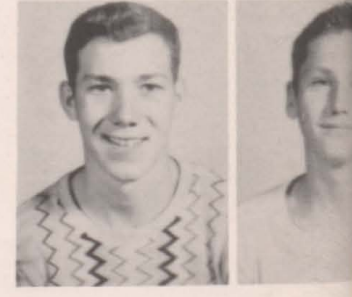
Eva Kneer
Ernestine Lawrence



Karen Lines
Stanley Maas



Glenn Mayo
Duane Mains



Allen McManis
Billy Miller



Francis Harvey

Gene Havens

Jack Hill

Norvell Houck

Glenn Huntington
Coleen Inman
Betty Janky

Harry Janky
Gary Johnson
Violet Johnston



Lonnie Timmerman
Harold Townsend
Mildred Weeks



Bill West

Richard Mosier Bobby Wilkinson
Verla Mosman Darleen Wilmarth



Melvin Winstone

Wayne Walford



Donna Nolte
Beverly O'Riley

Class Sponsors

Junior Piercy
Ellen Preston



Gertrude
Hentsch



Howard
Larimer

Ellen Quinn
Edward Reed



Marvis Richardson
Ronald Rubin



Margaret
Schulz



Donald
Helmrs

Deloris Sturdevant
Maurice Sullivan

Norvell
Houck
President

Ernestine
Lawrence
Vice-president

Marvis
Richardson
Secretary

Joan
Goldsmith
Treasurer



Marie Badgett
 Dorthea Barton
 Paul Bauer
 Donald Bauman
 Carrel Beemer



Barbara Boelling
 Marjorie Briggs
 Daryl Calkins
 Ramona Carter



S

Leta Chafa
 Ruby June Cooper
 Donna Costello



O

Anita Cullen
 James Curtis



P

H

Denny Edwards



Patrica Gebbie
 Phyllis Gentle

O



Keith Groff
 Shirley Haley
 Connie Hall





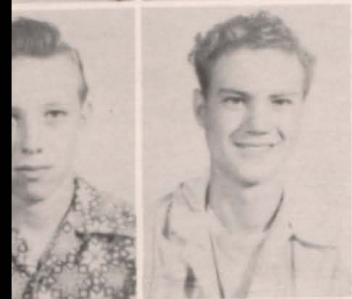
Donna Hardisty
Jack Harvey
Sally Hatten
Helen Holbrook
Fred James



Patricia Jenson
Ella Mae Johannes
Glenn Johnson
Merle Jordening



Percy Keith
Jean Kimball
Joyce Kirkpatrick



Larry Lenz
John Lovely

S

E

R

O

Raymond McMurray



M

Norman Naven
Marilyn Nelson



Ruby June Nelson
Gary Norcross
Shirley Penn





Conie Preston
Donna Rea Rhodes
Janice Ritnour



Harley Rogers
Vice-President



Jack Harvey
Secretary-
Treasurer



George Rogers
Harley Rogers
Jerry Russell

CLASS OFFICERS



Gary Norcross
President



Anita Cullen
Reporter



Donna Schaffer
David Schafroth
Elnora Selby

The Sophomore Class keeps busy by participating in sports and music. They contributed two girls for the cheerleaders and many joined the GAA, the Y Teens, the Junior Hi-Y, and the FFA. They also have helped the school by being active in the Student Council.



Elizabeth Sherlin
Douglas Sickler
Richard Stanley



Vivian Stice
Alice Rae Thomas
Robert Thomas



Eva Kazebeer
Sponsor

CLASS SPONSORS



Ralph Currie
Sponsor



Francis Tranbarger
Kent Wever
Pauline Wilmarth

Guy Brace Boyd Russell
Dorothy Dillinger Donna Steinfort
NOT SHOWN





Bernice Berscheid
Patsy Curtis
Larry Damewood



Gene Adams Mary Jane Arbuckle Norma Beemer Sonja Bennett Sharon Bennington
Kenneth Booth Patricia Boswell Jackie Campbell John Cooney Bernard Coulthard

Sam Damewood
Dean Davis

FRESHMEN

John Cooney
Vice President

Charles Dewees
Verlin Dicks



Mary Gauthier
Sponsor

Ivan Dixon
Jon Dotson

Edith Long
Secretary



Glen Farris
Norman Firkins

Beverly Gaskill
Arthur Gebbie

John Gebbie William Gibson Larry Haggerty Robert Hansen Donald Harrison
Betty Harvey David Harvey Bruce Hight Helen Jacobs Velma Jacobs



James Hatton
Richard Hatton
Larry Johannes

Lois Johannes
Robert Law
Edith Long



Linnea Johnson Joyce Jordening Eleanor Kingery Francis Kingery Marilyn Kingery
Lois Jean McGregor Marilyn Mercier Jane Moore Roger Murdock June Narigon



Ralph Neill
Robert Nelson

FRE



Juanita O'Riley
Lois Palmer



Ted Turner



Carl Whipple



Jerry Peckham
Phyllis Pennington



Joann Piercy
Patrica Quinn



Edith Long

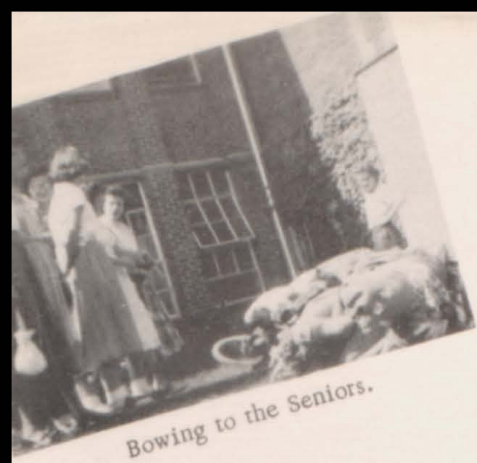
Betty Reed
Peggy Resh

Rita Roberts Beverly Rodman Norma Rubin Verlee Russell Loretta Ryan
Deryl Schaffer Ronald Schooling Edward Scott Betty Selby Henry William Shuler



Glen Roberts
Larry Roberts
Danny Schafer





Bowling to the Seniors.

Jerry Sickels
Joyce Smyser
Darwin Snyder



Janet Stillinger
Jean Stice
Donna Stuvick



Gary Thompson
Harold Thompson
Robert Thompson



H M E N

Cheri Tindall
Roberta Townsend
Ted Turner



Linda Vernon
Donald Vogel
Tom Walford



Glee Warnock
Jackie Westlake
Jerry Westlake



Marie Westlake
Mary Lou Wycoff
Dale Wynn



Carrying Senior's Books



Red Raider Maidens

Corning High School welcomed 101 new comers to its domain September 1, 1952.

After getting slightly acquainted with the ways of the school, the seniors gave them their formal welcome by having them dress as Red Raider Indians for a day. This made the life of the seniors complete having slaves for the day.

Jerry Peckham, Edith Long, Billy Gibson, and Norman Firkins represent the freshman class in student council.

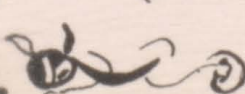
The freshman class is well represented in all organizations, band, vocal music, and sports.

Ronald Young

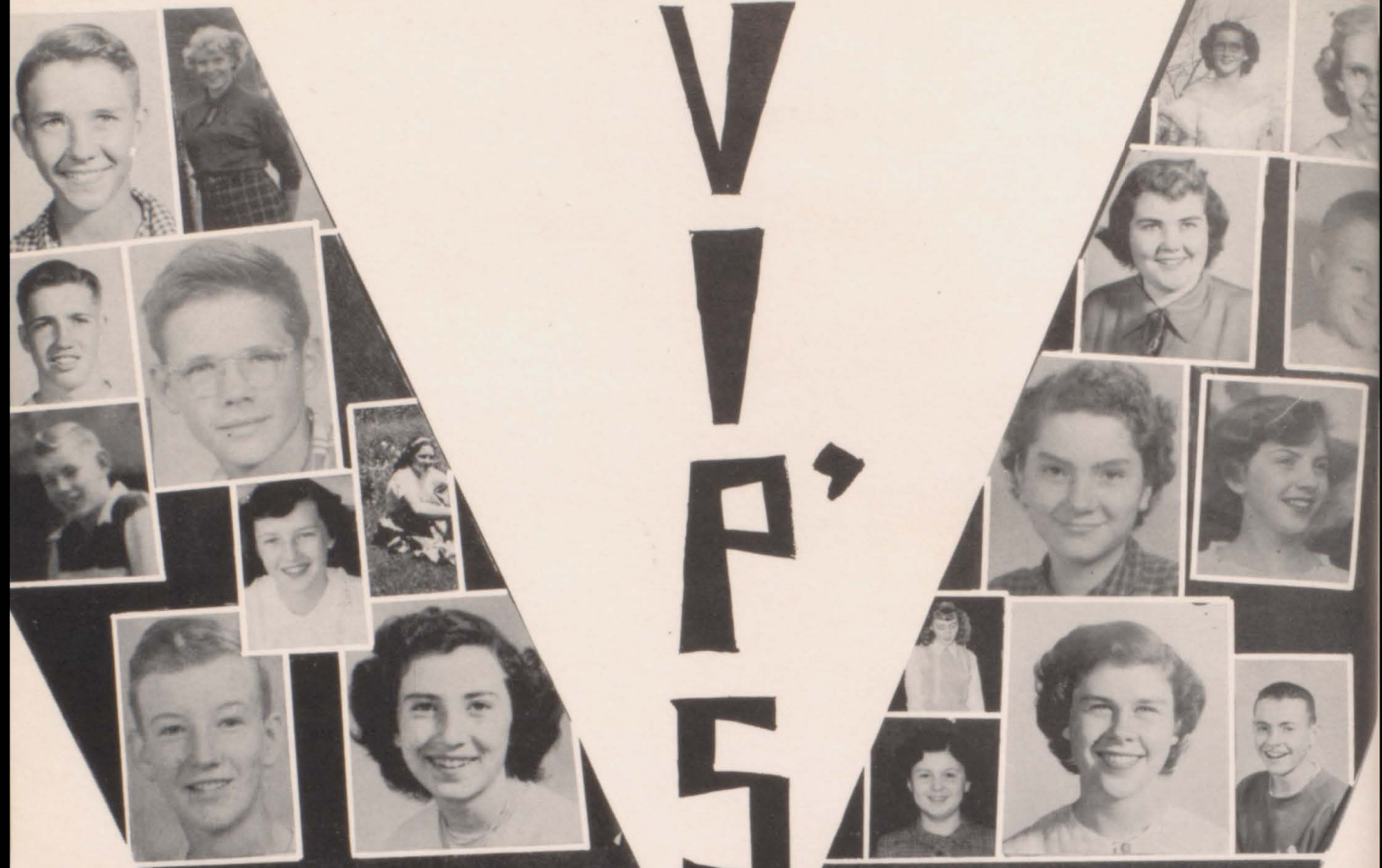


NOT SHOWN
Kathryn Hair
Anna Harlow
Edith Sturdevant
Lee West

Senior trouble!



V V A S



MOST LIKELY TO SUCCEED

F. Ted Turner
S. Anita Cullen
Jr. Marvis Richardson
Sr. Dick Gibson

BIGGEST BRAIN

F. Marie Westlake
S. Don Bauman
Jr. Darlene Boham
Sr. Marilyn Neil

BEST ALL AROUND

F. Edith Long
S. Donna Castillo
Jr. Jerry Keever
Sr. Jo Ann Schofroth

FRIENDLIEST

F. Norman Firkins
S. Donna Sickler
Jr. Gary Easterlie
Sr. Bob Scott

Rita Roberts
Alice Rae Thomas
Betty Kirkpatrik
Janice Hogan



Home Room 9D



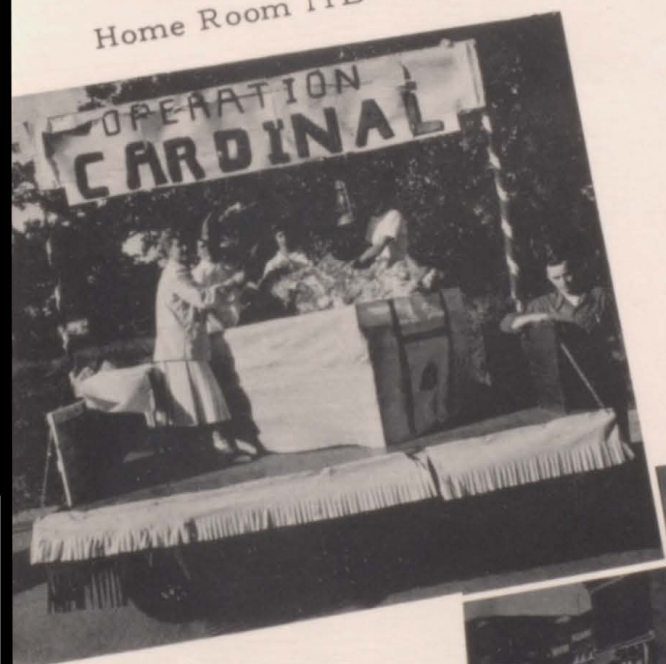
The Telephone Company's Entry

The Night Before



HOMECOMING

Home Room 11B



"Ready aim, fire!" 9B



Here comes Mammy" 11C



ORCHIDS TO:



A gift for Mr. Hirschfelder



Martin Hirschfelder

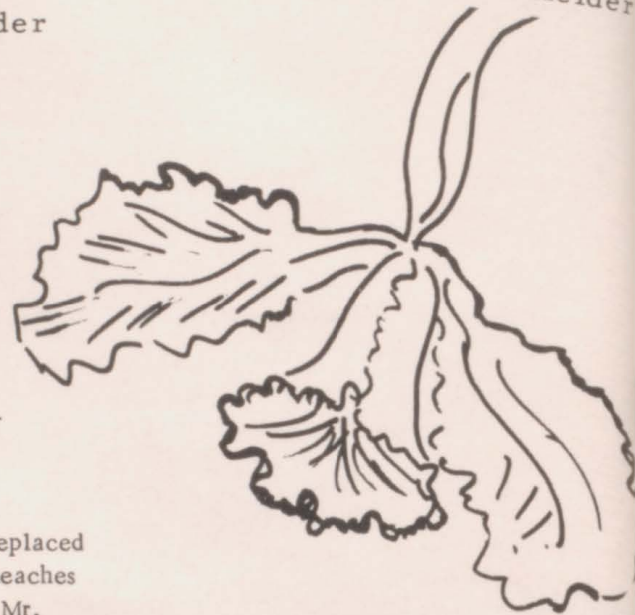


A book from Mr. Hirschfelder



Martin Hirschfelder, a German Exchange teacher, who visited our school for three weeks. During his stay he stayed in many Corning homes. Mr. Hirschfelder made many friends during his stay and every one was sorry to see him leave. The Presidents of the High School classes and our Annual Editor, representing the students of C.H.S., presented Mr. Hirschfelder with a Schaffer pen and pencil set as a farewell gift.

Lester Lee Hoover of Mt. Ayr, Iowa who replaced Mr. Helmers as commercial teacher. He teaches Typing, Bookkeeping and Junior Business. Mr. Hoover graduated from Maryville Northwest College. He has a B.S. Degree.



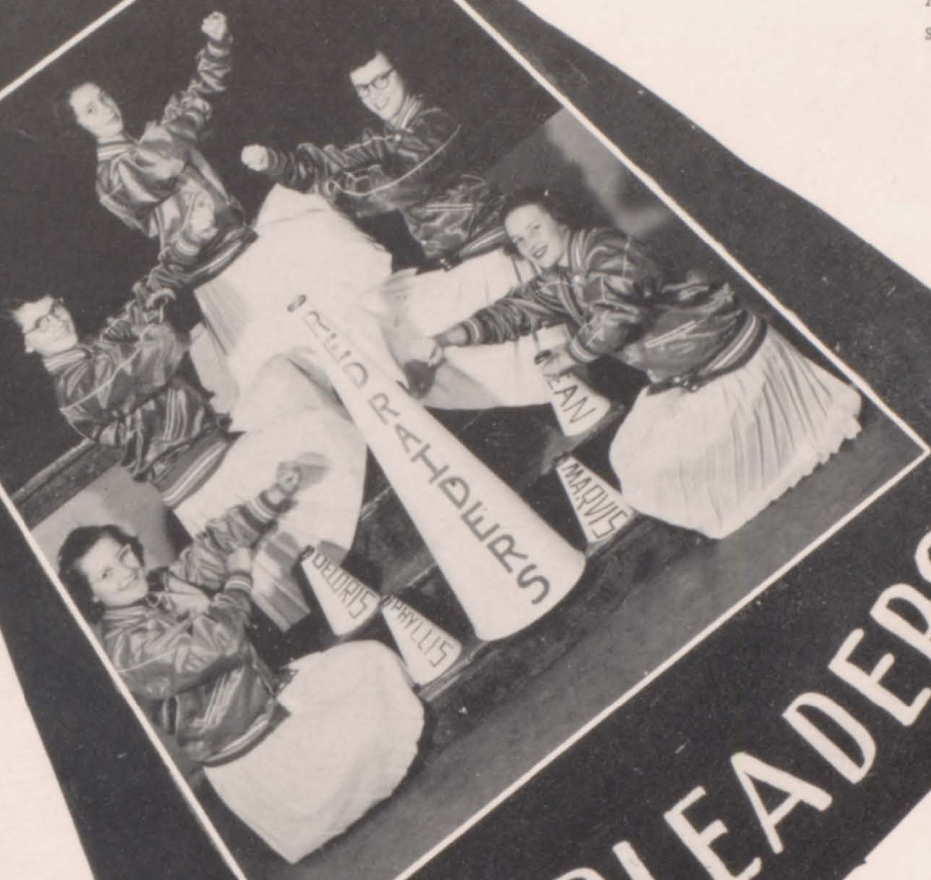
"A friend in need is a friend indeed" and this certainly applies to Bill Sickler and Lester Dotson the C.H.S. custodian and janitor. These two faithful friends helped keep our school clean and neat during the 1952-53 school year.





Almira Turner
sponsor

DeLores Peterson
Jean Gearheart
Donna Castillo
Marvis Richardson
Phyllis Gentle



CHEERLEADERS



This is to introduce the cheerleaders of 1952-53 school year. Phyllis Gentle, Donna Castillo, DeLoris Peterson, Jean Gearheart, and Marvis Richardson make up this peppy little group with Phyllis Fishell as first alternate.

They are very proud of the new jackets with the white and black trimmed megaphone and the letter C on the back. These were obtained by funds which the Pep Club earned last year. Each girl has a megaphone with her name on it which she purchased for her own use.

There was no specific Pep Club organized this year, but we have had much school spirit which is appreciated by the boys who are playing. Our thanks to Jean Kimball for helping make it possible to take busses to the out-of-town games.

Miss Almira Turner is the able director of this little group.



Phyllis Fishell
alternate



LIBRARY STAFF



Left to right, Back Row: Patricia Jensen, Marilyn Neill, Janice Ritnour, Donald Bauman, Richard Bohanan, Ted Kinne, Helen Holbrook, Elizabeth Sherlin, Roberta Townsend. Front Row: Marie Westlake, Edith Long, Marie Badgett, Lotta McMurray, Pauline Wilmarth.



The library staff is made of students of CHS who are somewhat familiar with and interested in literature. They are mainly there to help other students find information and books. These students learn all about the functions of the library from the high school librarian, Miss Green.

OFFICE STAFF



Ernestine Lawrence, Connie Kinne, Ella Mae Johannes, Rita Ryan, Carol Bixler, Dorothy Johnson, Janice Hogan.





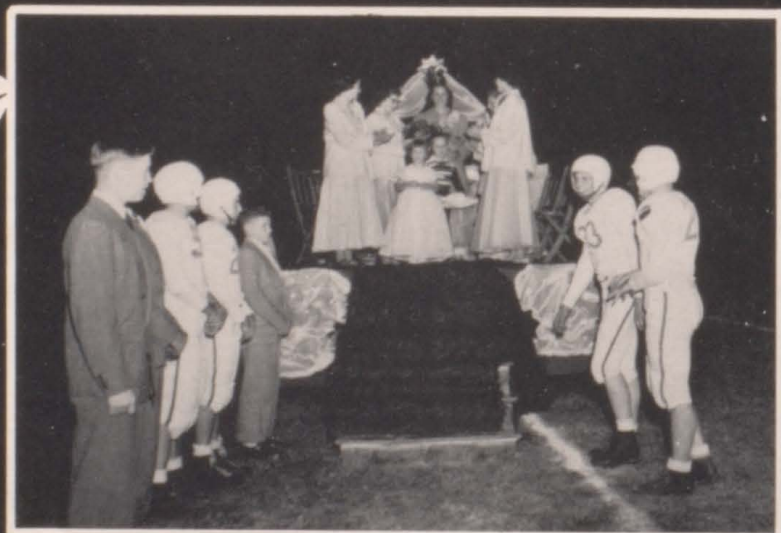
RAIDER ROYALTY



Sophomore attendant - Donna Costello, Senior attendant - Kathy Resh,
Queen - DeLoris Peterson, Junior attendant - Berniece Boswell,
Freshman attendant - Beverly Gaskill.



HOME
COMING



The Coronation Party



QUEEN

BASKETBALL ROYALTY



Sophomore Attendant
Donna Castillo



Senior Attendant
Jo Schafroth



Freshman Attendant
Beverly Gaskill



Senior Attendant
Barbara Burgan



Junior Attendant
Phyllis Fishell



Queen
Violet Johnson





MISS JO ANNE SCHAFROTH 1953 RED
RAIDER BEAUTY QUEEN

. . . . was chosen from a field of four Corning beauties by Harlan Miller, well known newspaper columnist, commentator, and philosopher. Miss Schafroth reigned over the 1953 Year-book Dance.

ANNUAL
BEAUTY
DANCE



The Queen and her Court



Hazel Case
Junior Attendant



Donna Schaffer
Sophomore attendant

Oh, for the life of a business manager!!



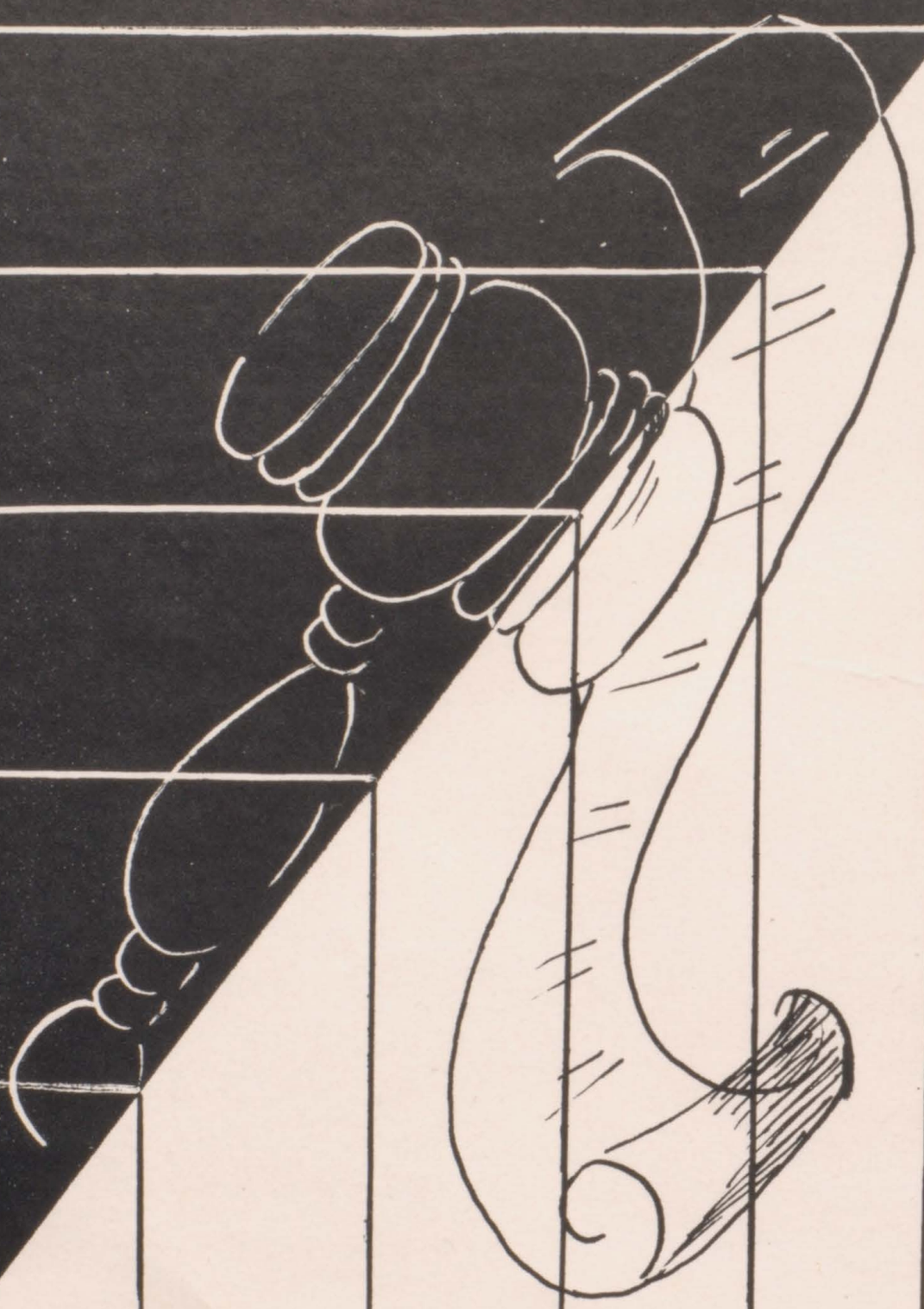
The portals whence our
music poured.



Rita Roberts
Freshman attendant



ORGANIZATIONS





The Smoke Signal

Vol. IV

Corning, Iowa,

No. 4

PAPER STAFF INCLUDES LARGE MIXED GROUP



Miss Mary Gauthier
Our Sponsor

THE SMOKE SIGNAL

Published bi-monthly in the interest of the Corning Public Schools by the pupils of the high school.

STAFF

Editor-in-Chief	Ted Kinne
Assistant Editors	Marilyn Neill, Doris Lundquist
Business Manager	Dale Odell
Assistant	Weldon Cooney
Circulation Manager	Janice Hogan
Assistants	Carolyn Murdock, Richard Harrison, Marvin Dhone
Feature Writers	Evelyn Kirkpatrick, JoAnne Schafroth, Cheryl Bixler
School News Editor	Doris Moore
Class Reporters: Carolyn Harvey, Sophomore; Betty Westlake, Junior; Tom Johnson, Senior; Marilyn Hight, Freshman.	
Organization Reporters: Alvus West, FFA; Don Simmons, Junior Hi-Y; Phil Sturdevant, Senior Hi-Y; Charlotte Kneller, Y-Teens.	
Art and Drama Editor	Kathryn Quinn
Music Editors	Bud Vernon, Erma West
Sports Editor	Richard Bohanan
Assistants	Gordon Sickler, Bob Scott, Don Riegel
GAA Writer	Mary Lawrence

PAPER STAFF SPONSORS AFTER GAME DANCES.

Under the able assistance of Mary Gauthier, the Smoke Signal has helped create spirit and friendship in Corning High. The Staff has worked hard to turn out a paper every two weeks for the 1952-53 season.

To raise money, the staff sponsored dances at the Youth Center after school ball games.



HI-Y



Howard Traxler
Sponsor

The Corning Senior Hi-Y belongs to the Southwest Iowa District and North Central Area Y. M. C. A. This year it is composed of 36 junior and senior boys.

The Hi-Y creed is clean speech, clean scholarship, clean sports, and clean living.

Some of the service projects this year have been: Painting the fence at the football field; cleaning up the press box; contributing to World Service for International Refugees.

Dick Gibson and Keith Riley represented Corning in the mock legislative program, "Youth in Government," which was held in Des Moines in December.

Thanksgiving assembly sponsored by



Mr. Traxler

Don Riegel
Secretary

Bill Farris
Vice President



Dick Gibson
President

Ted Kinne
Chaplain

Galen Drennan
Treasurer



The Junior Hi-Y, the little brothers of the Senior Hi-Y, completed its second successful year. This organization is composed of 28 members with Mr. Helmers as sponsor.

Among their many activities during this year was the sponsoring of a talent show November 21, 1952, with the whole school participating.

We hope that the future years hold as much success for the Junior Hi-Y as did this year.



Mr. Helmers
Sponsor



Bill Gibson
Chaplain



Ted Turner
Secretary



Doug Sickler
President

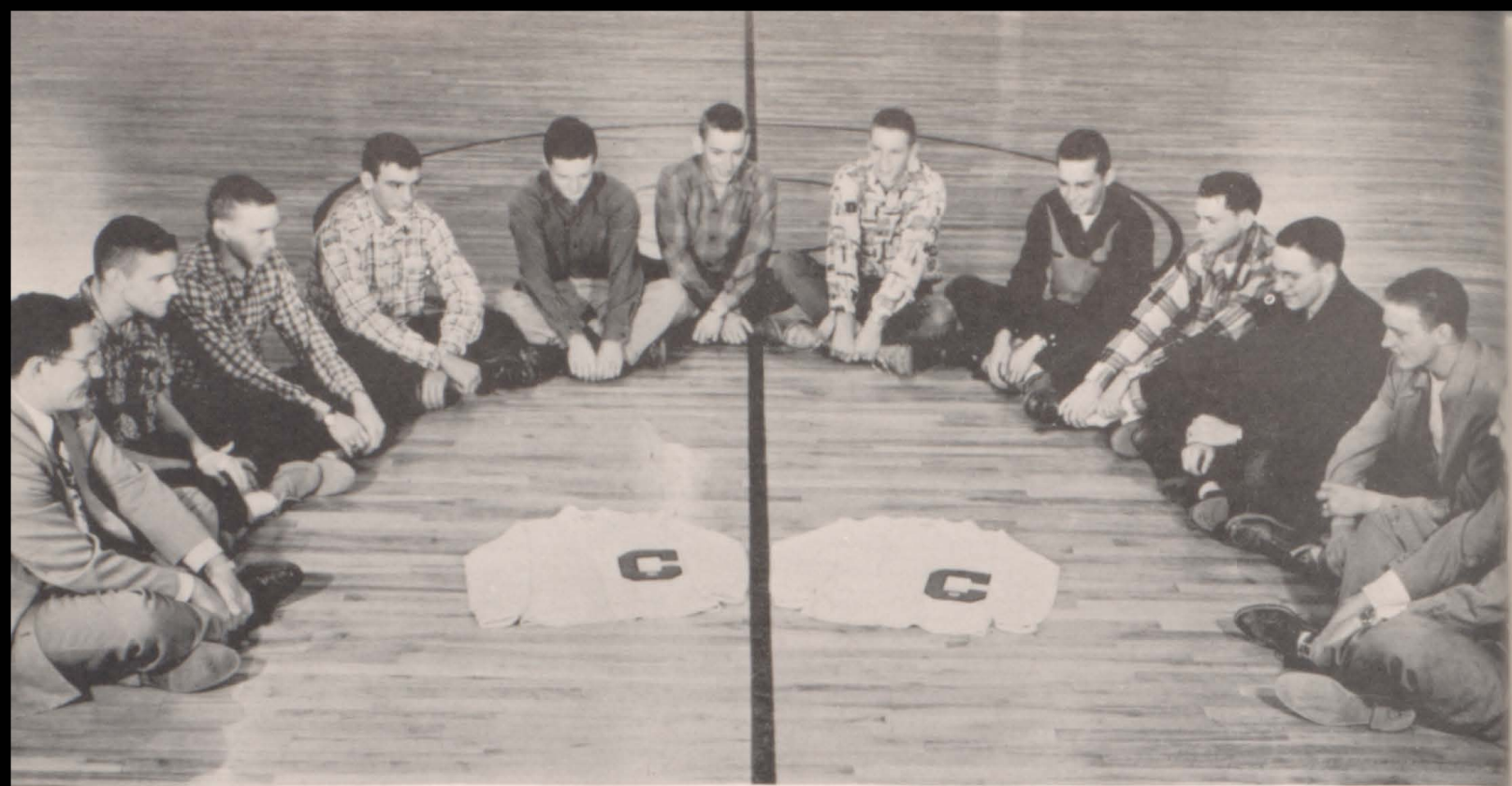


Glen Farris
Treasurer

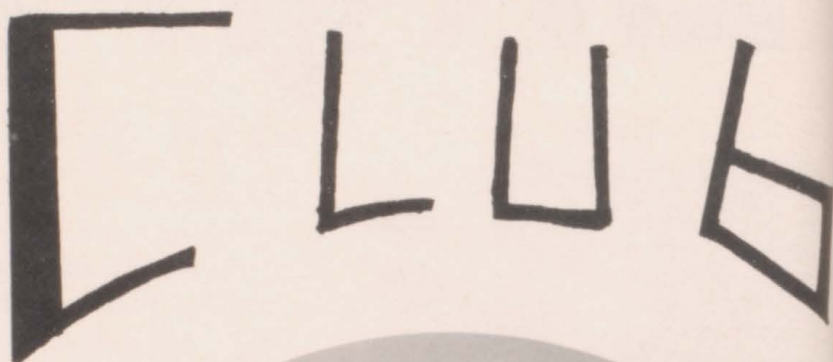


David Schafroth
Vice-president





Lee Wachenheim, Sponsor; Dick Gibson, Don Reigel, Treasurer; Keith Riley, Harold Townsend, Vice-President; Jerry Keever, Secretary, Glenn Mayo, Tom Johnson, Richard Bohanan, Phil Sturdevant, President; Chuck Uknes, Sponsor. Stanley Johnston, not shown.



Returning Lettermen
examining new equipment.



THE SPIANS



Jo Schafroth, Richard Bohanan, Bob Scott, President; Ted Kinne, Vice-President; Miss Turner, Sponsor; Tom Johnson, Janice Hogan, Treasurer; Kathryn Quinn, Scribe.

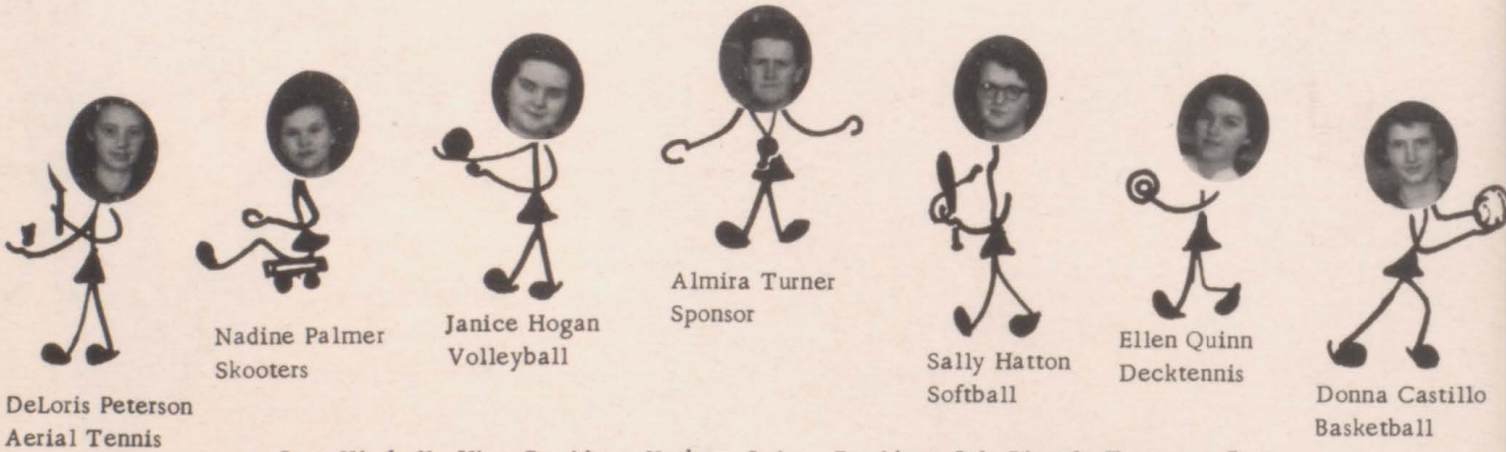
Seven ambitious seniors have gained membership into Corning High Thespian Troupe No. 315. Membership in the organization is based upon a point system gained through work in drama. At the close of each year a formal initiation is held for new members.

The group is under the able sponsorship of Miss Vivian Turner.



G.A.A.

Our G. A. A. organization gives each member the chance to show her ability in competitive games within our organization and with other towns. We teach and practice good clean sportsmanship and fun at all times.



DeLoris Peterson
Aerial Tennis

Nadine Palmer
Skooters

Janice Hogan
Volleyball

Almira Turner
Sponsor

Sally Hatton
Softball

Ellen Quinn
Decktennis

Donna Castillo
Basketball

Jean Kimball, Vice-President; Kathryn Quinn, President; Iola Riegel, Treasurer; Betty Westlake, Secretary; Mary Lawrence, Point Keeper.





The Y-Teens are the largest girls' organization in our school system. We take an active part in both community and social affairs.

This year our group consists of 57 members, sponsored by Eva Kazebeer and Alice Pfander.

Our community was chosen as the location of the South-West Iowa District Fall Conference this year. We sponsor, as has been the custom for the past several years, an Annual Twirp Week and Dance. Then and only then the girls are in close pursuit of the boys.

We sent chocolates to the Philippines at Christmas, and those who attended the Christmas services will also note they were sponsored by us.

The girls' goal all year is to work for merits to enable them to attend the Spring and Summer Conferences.



Miss Eva Kazebeer
Sponsor



Miss Alice Pfander
Sponsor



FRONT ROW, LEFT TO RIGHT: Miss Pfander, sponsor; Carol Bixler, Service Chairman; Donna Rhodes, Music Chairman; Leta Chafa, Worship Chairman; Janice Gearheart, Treasurer; Ernestine Lawrence, Secretary; Miss Kazebeer, Sponsor. BACK ROW: Violet Johnston, Vice President; Verla Mosman, Publicity Chairman; Betty Kirkpatrick, Program Chairman; June Stillinger, President; Claire Richey, Social Chairman.

Y T E E N S



F
H
A

FIRST ROW: Conie Preston, Rosemary Russell, Donna Steinfort, Doris Lundquist, Connie Kinne, Miss Hensch, Evelyn Kirkpatrick, Shirley Preston, Mary Lou Wycoff, Darlene Wilmarth, Janice Ritnour. SECOND ROW: Joyce Kirkpatrick, Marilyn Nelson, Roberta Townsend, Beverly Rodman, Ruby Cooper, Kathryn Hair, Marilyn Neill, Vivian Stice, Jean Stice, Ella Mae Johannes, Donna Kingery, Joan Piercy, Marie Badgett. THIRD ROW: LoRaine Paul, Peggy Resh, Juanita O'Riley, Berniece Boswell, Erma West, Edith Sturdevant, Alice Rae Thomas, Marilyn Kingery, Rudy Nelson, Lois Johannes, Joyce Jordening, Pauline Wilmarth, Sonja Bennett.



Miss Hensch
Sponsor

The Future Homemakers of America can now chalk up another successful year. Our many activities included: Sponsoring Homecoming Coronation, making candles, tassels for shoe skates, sending Christmas packages to servicemen overseas, Christmas caroling, and many other activities. We look ahead for many more successful years.



OFFICERS

President	Alice Rae Thomas
Vice-President	Connie Kinne
Treasurer	Joyce Kirkpatrick
Secretary	Janice Ritnour
Public Relations	Lois Johannes
Parliamentarian Degree	
Reporter	Evelyn Kirkpatrick
Historian	Berniece Boswell
Music	Darlene Wilmarth
Projects	Sonja Bennett
Recreation	Doris Lundquist
Pianist	Erma West



FFA Officers: Mr. Carl Whipple, Gene Huntington, Marvin Fuller, Gene Havens, Norvell Houck, Leon Little.

F

F

A

A very appropriate organization in an agricultural community such as ours is the Future Farmers of America. Many boys join this organization each year with this year as no exception.

This year's FFA was complete with 69 boys including 5 officers and Mr. Carl Whipple as able sponsor and advisor.

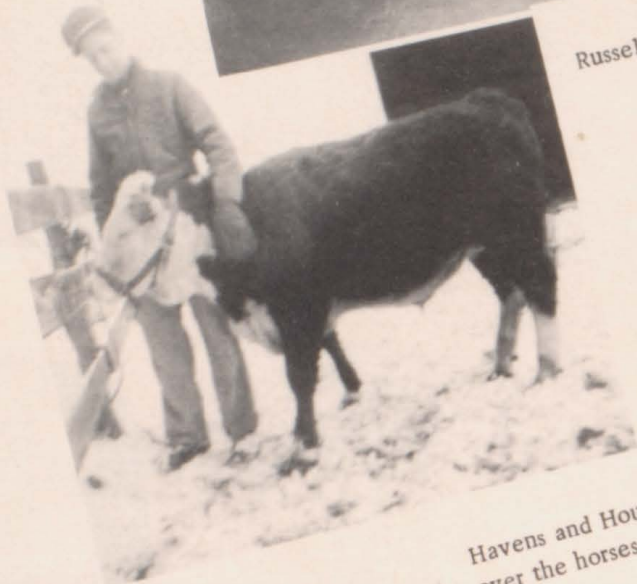
The outstanding activities of the year included the Harvest Ball and Homecoming Dance.

These social activities together with the work projects help make this a successful organization.





The terrors of Kansas City
(National Convention)



Russell's first love

Havens and Houck looking
over the horses

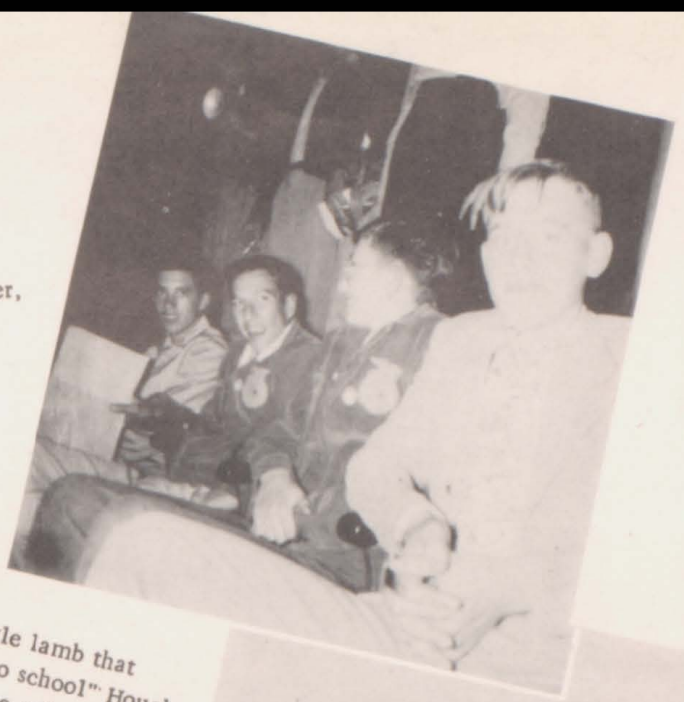
The F.F.A. is one of the largest and the busiest organizations in the high school. The boys who belong to the F.F.A. are trained to take care of various farms projects - a training which will enable them to take their places in a farm community upon graduation. In addition to this practical work they take other courses to give them a well-rounded education. They are active in both school and community affairs. A thorough course under the direction of Mr. Carl Whipple, F.F.A. sponsor and vocational agriculture instructor, in parliamentary procedure is part of the course.

F
F
A

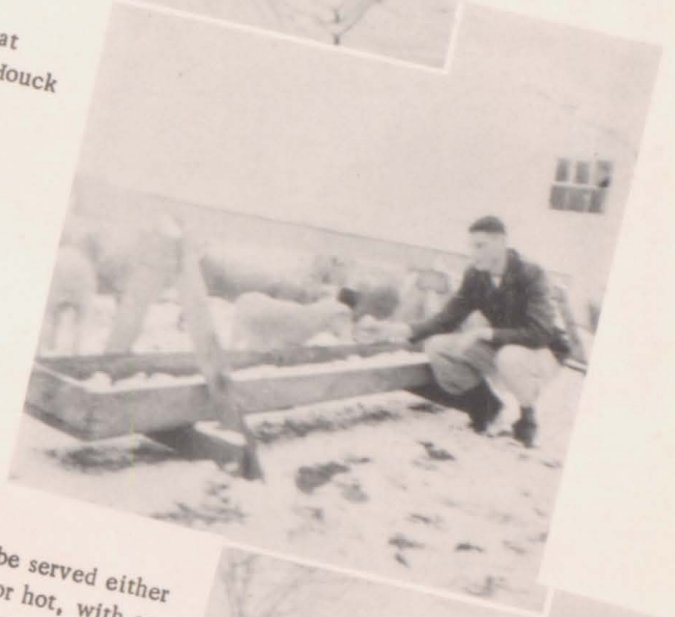
Baa-aa-aaa



"Ma, look at us", frolicsome four at convention, (Curtis, Bauer, Piercy, and Jordening).



"Norvell had a little lamb that didn't follow him to school" Houck with some of his fine animals.



The F.F.A. is a self-sustaining organization and membership fees help to pay for such activities as going to the National Convention held in Kansas City. Other highlights of the year included going to the State Convention in Des Moines, sponsoring the Harvest Ball, being represented in Parliamentary Procedure District Contest, sponsoring a Pep Assembly and the Parent-Son Banquet. The F.F.A. is surely an integral part of Corning High School life.

"To be served either cold or hot, with or without mustard."



"What are you lookin' at?"





Left to right, First row: Dick Gibson, Stanley Maas, Buddy Vernon, Bill West, Second row: Cheryl Bixler, Janice Hogan, Carolyn Harrison, Janice Gaskill, Barbara Burgan, Janice Lindhammer, JoAnne Schafroth, Betty Westlake, Jean Gearheart, Darlene Boham, Mary Lawrence; Ellen Quinn, Marilyn Bohanan, Arnold Beath. Third row: Richard Bohanan, Robert Scott, Verla Moseman, Doris Lundquist, Betty Boelling, Cletus Mercier, Betty Kirkpatrick, Shirley Thomas, Carolyn Murdock, Kent Wever.



Betty Kirkpatrick
Staff



Bill West
Photography



Mr. Doyle
Sponsor



Evelyn Kirkpatrick
Staff



Doris Lundquist
Staff



Verla Mosman
Staff

The Annual Staff is composed of Junior and Senior students who are interested in writing and art. These students are given various assignments in connection with Yearbook like activities, photography, copy and art. The business manager raises money to cover the production costs of the book which is sold below cost to the students and the community. The Staff performs a most admirable task in making this permanent history of one year at Corning High. The Annual extends the hope you will enjoy the 1952 Red Raider.



Cheryl Bixler
Staff

Jo Schafroth
Editor and Art



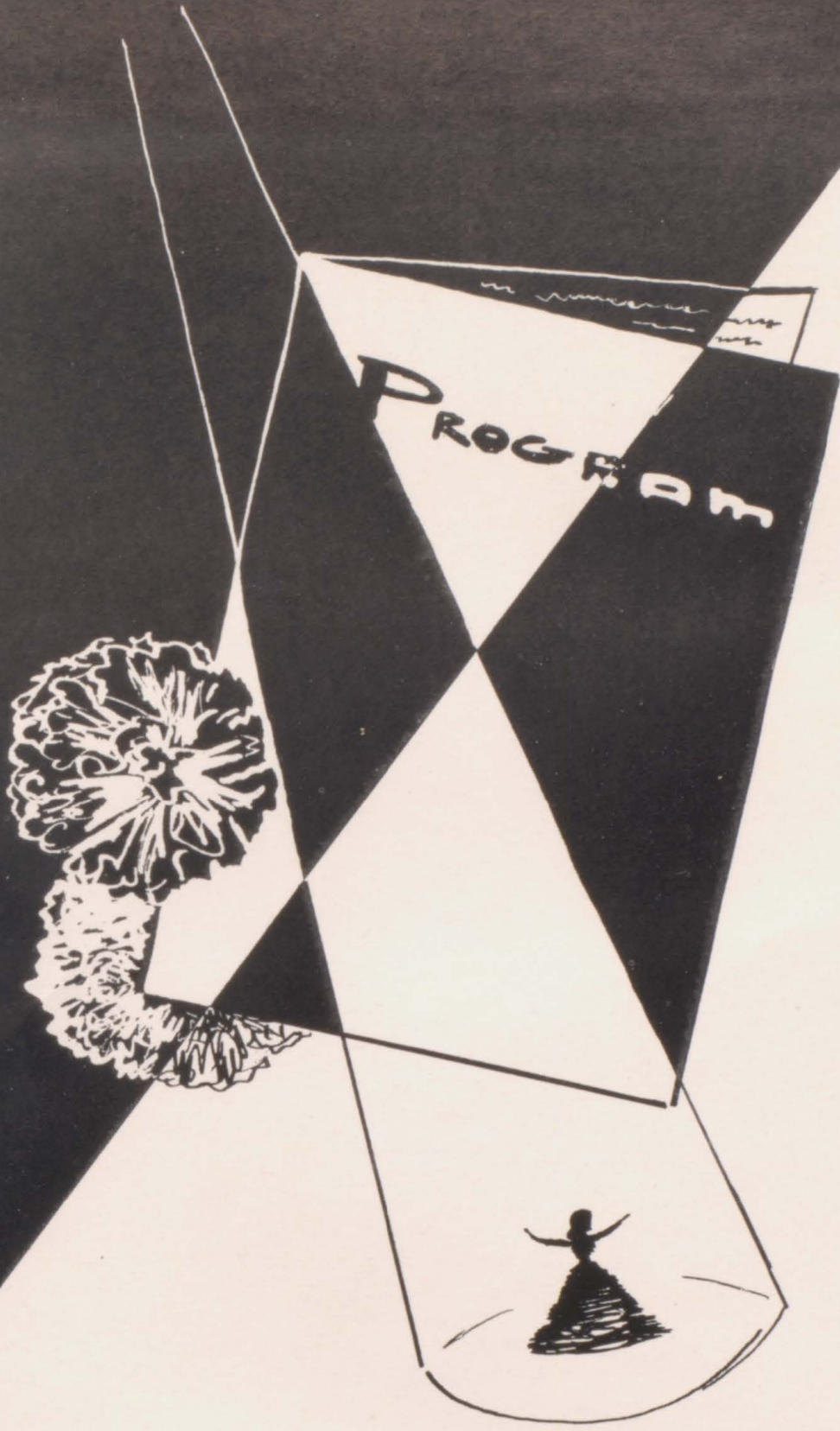
Dick Gibson
Business manager



Mildred Weeks
Staff



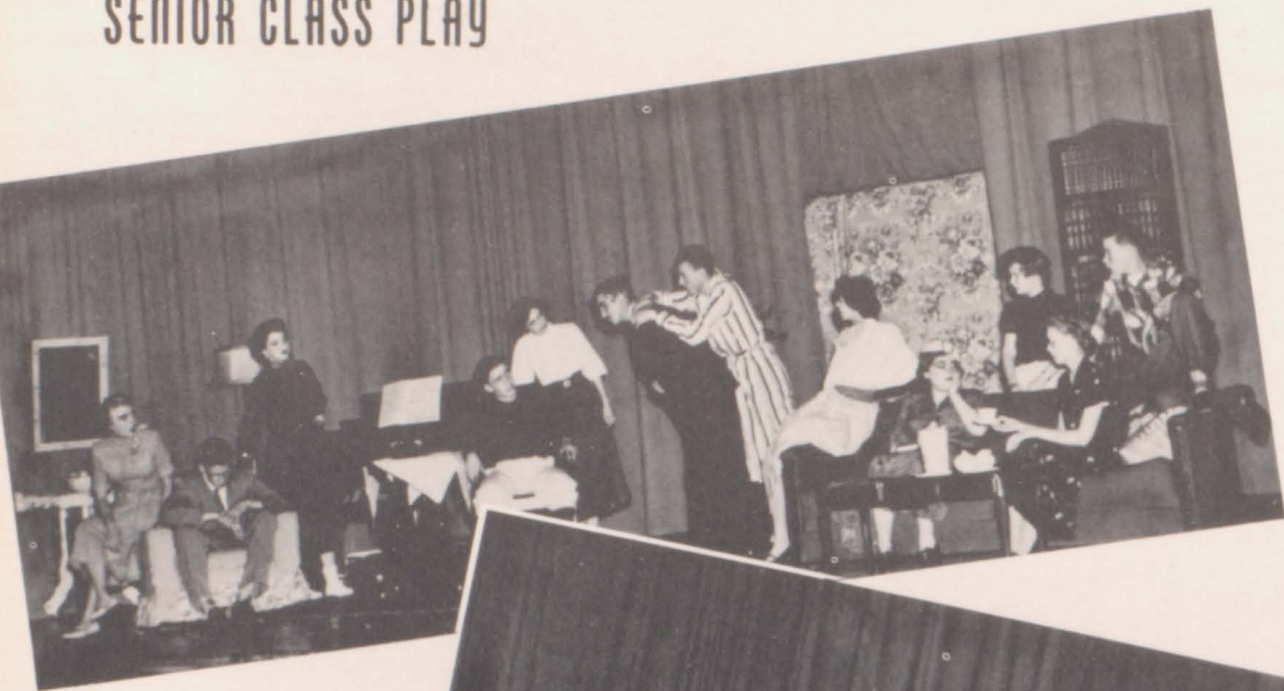
Charlotte Kneller
Staff



SPEECH AND DRAMA

WE SHOOK THE FAMILY TREE

SENIOR CLASS PLAY



"I got him, I got him!"



"I'll take drastic action"



"What a charming couple!"

Cast: Hildegard-Kathryn Quinn; Freddie-Ted Kinne; Father-Doyle Perry; Mother-Marilyn Neill; Sally-Jo Schafroth; Bob-Bob Scott; Jimmy-Bud Vernon; Mr. Shermer-Cletus Mercier; Mrs. Shermer-Janice Hogan; Jill-Cheryl Bixler; Ellie May-Carolyn Harrison; Paige-Mary Helen Hinck.



Rosemary Russell
Prompter

SPEECH CONTEST



Jo Ann Schafroth received a I rating in the District Speech Contest with her dramatic reading from the book Rebecca.

Miss Vivian Turner was the able speech and drama instructor.



Janice Hogan was awarded a I rating in the humorous division with a reading of "At the Swimming Pool."



Marilyn Neil was given a I rating for her fine interpretive reading of "Purple Grackles."



FANCIEST DUDS

Sheri Tindall
 Donna Rhodes
 Jean Gearheart
 Janice Lindhammer
 Bill Schuler
 Doug Sickler
 Jerry Keever
 Bud Vernon

LOCKER LOVERS

Art Gebbie-Peggy Resh
 Gary Norcross-Leta Chafa
 Rich Bailliff-Darlene Boham
 Dale Jacobs-Ila David

MOST BEAUTIFUL GIRL

Rita Roberts
 Donna Castillo
 Violet Johnston
 Jo Schafroth

BIGGEST FLIRT

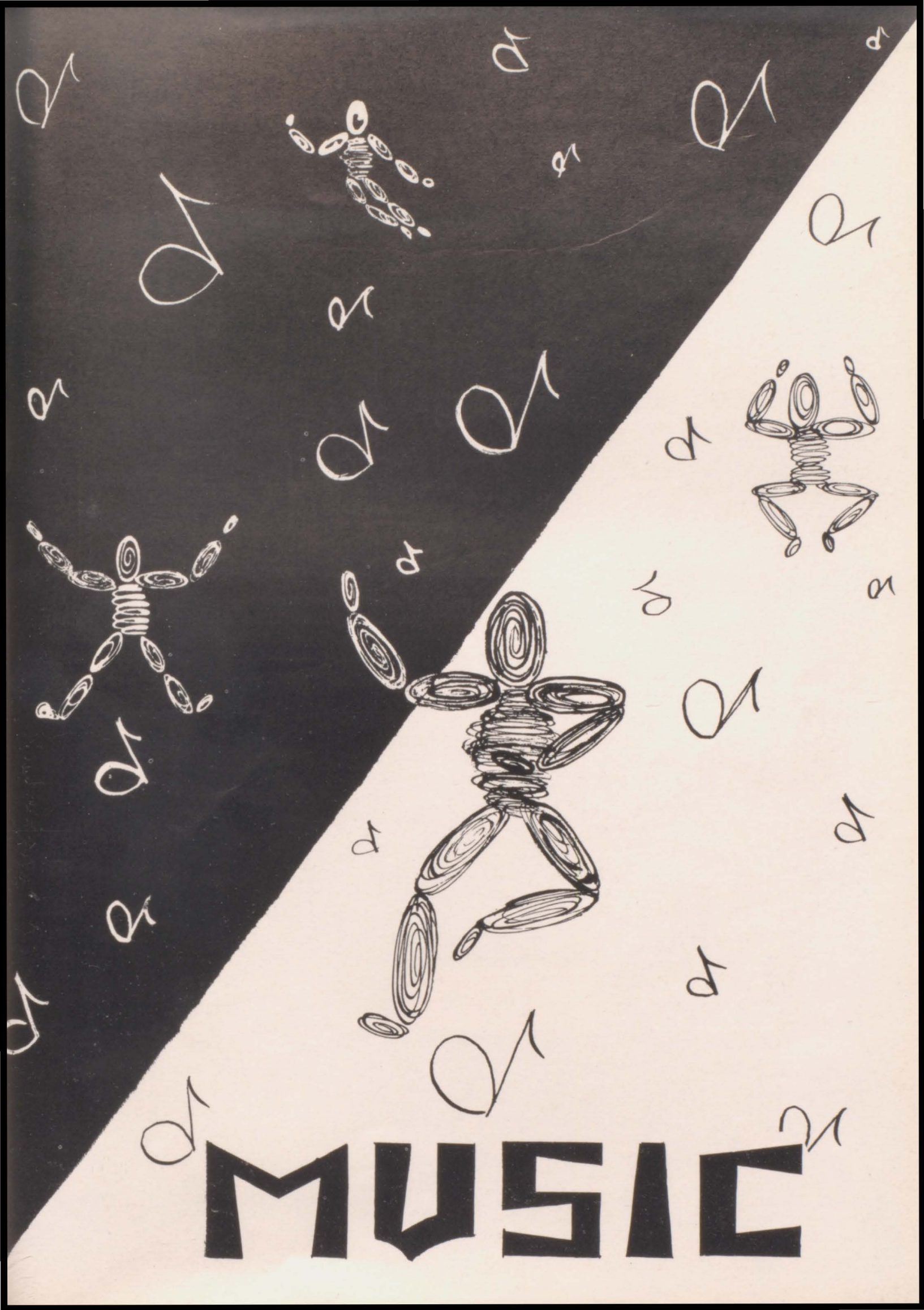
Linnea Johnson
 Liz Sherlin
 Karen Lines
 Cherryl Bixler
 Dick Hatton
 Glen Johnson
 Glen Mayo
 Tom Johnson

HANDSOME BOY

Bob Thompson
 Gary Norcross
 Glenn Huntington
 Darwin Dotson

MOST MOUTHY

Bob Hansen
 Jerry Russell
 Fred Arbuckle
 Carolyn Harrison



MUSIC



MIXED CHORUS



GIRLS GLEE CLUB



BOYS GLEE CLUB



GIRLS GLEE CLUB II

SMALL VOCAL GROUPS



ALL STATE CHORUS
FIRST ROW: Carolyn Harrison, Carmen Clement, Darwin Dotson, Cheryl Bixler.
SECOND ROW: Hazel Case, Harry Janky, Doyle Perry, Janice Hogan.



SEXTETTE II

ROW I: Sharon Campbell, Donna Rea Rhodes, Jane Moore.
ROW II: Shirley Penn, Mary Jane Arbuckle, June Narigon.



SEXTET I

Janice Lindhammer, Hazel Case, Erma West, Alice Rae Thomas, Janice Hogan, Cheryl Bixler.



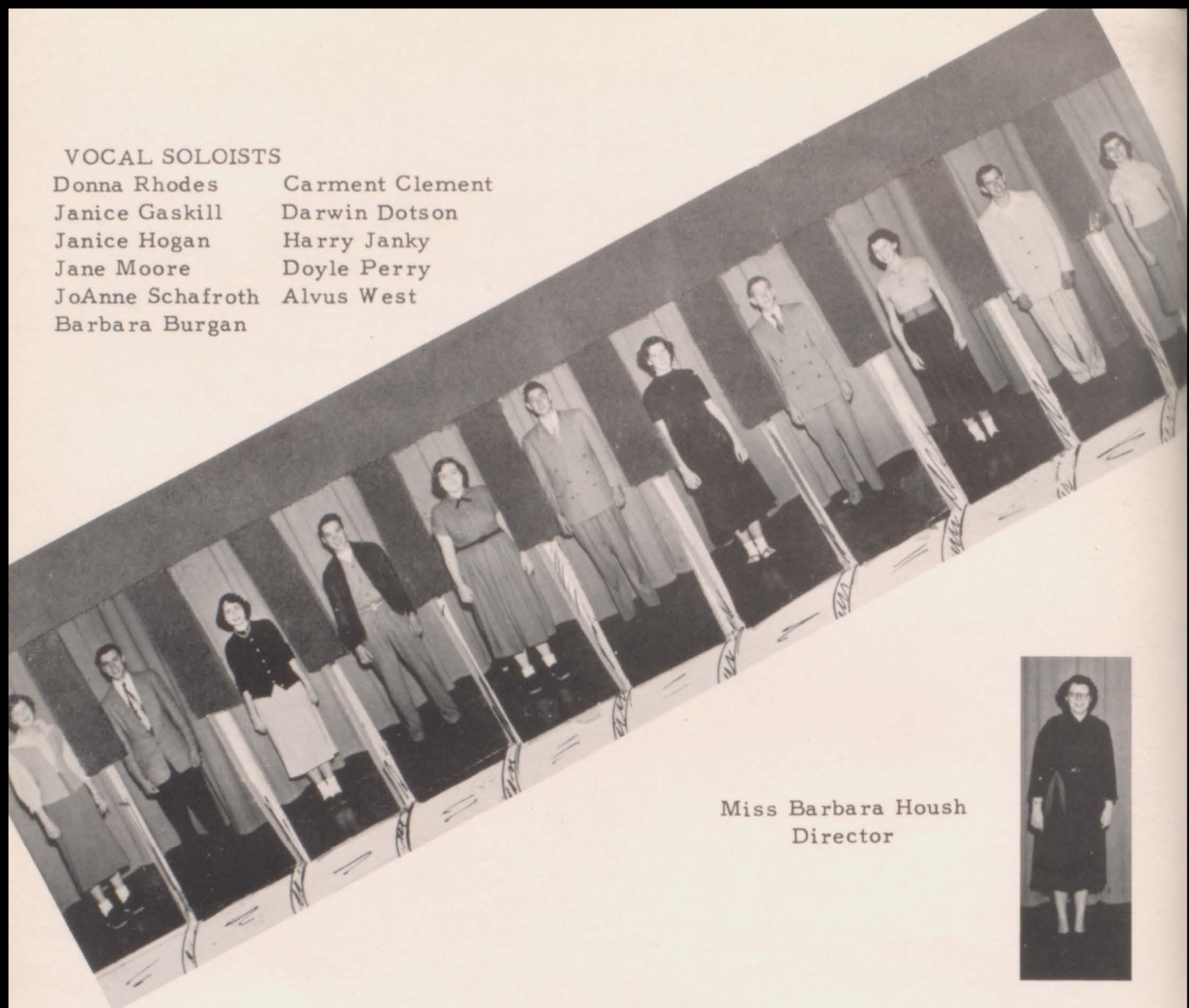
GIRLS' TRIO
 Carolyn Harrison, Janice Gaskill, Barbara Burgan.

ACCOMPANISTS
ROW I: Barbara Burgan, Velma Jacobs, Erma West.
ROW II: Linda Vernon, Alice Rae Thomas, Betty Janky, Janice Gaskill.



VOCAL SOLOISTS

Donna Rhodes	Carment Clement
Janice Gaskill	Darwin Dotson
Janice Hogan	Harry Janky
Jane Moore	Doyle Perry
JoAnne Schafroth	Alvus West
Barbara Burgan	



Miss Barbara Housh
Director



BOYS QUARTET
Doug Sickler, Cletus,
Mercier, Harry Janky, Doyle
Perry, Miss Housh





BAND OFFICERS

- Mary Jane Arbuckle . . Librarian
- Arnold Beath. . . Vice President
- Jo Schafroth Secretary
- Donna Costello Treasurer
- Keith Riley President

The Boss
Mahlon Collins

Marching in the Homecoming
Parade



Donna
Castillo



Marvis
Richardson



Connie
Wild

TWIRLERS AND

DRUM MAJOR



Delores
Peterson



Jo Schafroth
Creston Festival
Band Queen Candidate



Carolyn
Harrison

1st place
Creston Festival



Jo
Schafroth



Arnold
Beath

1st place
N.W.M.S.C.
Homecoming



CONCERT BAND



MEMBERS OF CONCERT BAND 1953 WERE: Mary Jane Arbuckle, Mary Lu Larson, Dona Loghry, Jean Talty, Evelyn Kingery, Mary Alice Bauer, Barbara Burgan, Janice Gaskill, Velma Jacobs, Betty Janky, Donna Janky, Mary Lou Kingery, Karen Lines, June Narigon, Linda Pennington, DeLoris Peterson, Joan Piercy, Marvis Richardson, Cheryl Symonds, Diane Wilmarth, JoAnne Schafroth, Arnold Beath, Connie Wild, Linda Vernon, Marcia DeVore, Lois Linbaugh, Stanley Maas, Dixie Sickler, Gary Thompson, Betty Boelling, Ronald Young, Connie Hall, Marilyn Mercier, Jane Moore, Alice Ray Thomas, Hazel Case, David Dunlavy, Donald Riegel, Billy Shuler, David Steinfort, Ted Turner, Jon Dotson, Eleanor King, Doyle Perry, Cletus Mercier, Norma Ruben, Kent Wever, Paul Bauer, Barbara Boelling, Charles Dewees, Merlin Dixon, Anita Cullen, Clifford Greenfield, Karen Dotson, Rosemary Theil, Buddy Vernon, Donna Rae Rhodes, Beverley Gaskill, Donald Harrison, Carolyn Harrison, Keith Riley, Sheri Updike, Mary Lou Wycoff, Kathy Campbell, Donna Castillo, Harry Janky, Leta Chafa.



Swing Band



Twirling Ensemble



All-State Band



Mixed Clarinet-Quartet



Brass Sextet



Woodwind Trio

ENSEMBLES



A Clarinet Trio



Saxophone Sextet



French Horn Quartet



Woodwind Quintet



Drum Ensemble



Trombone Quartet



Trumpet Trio



Flute Quartet

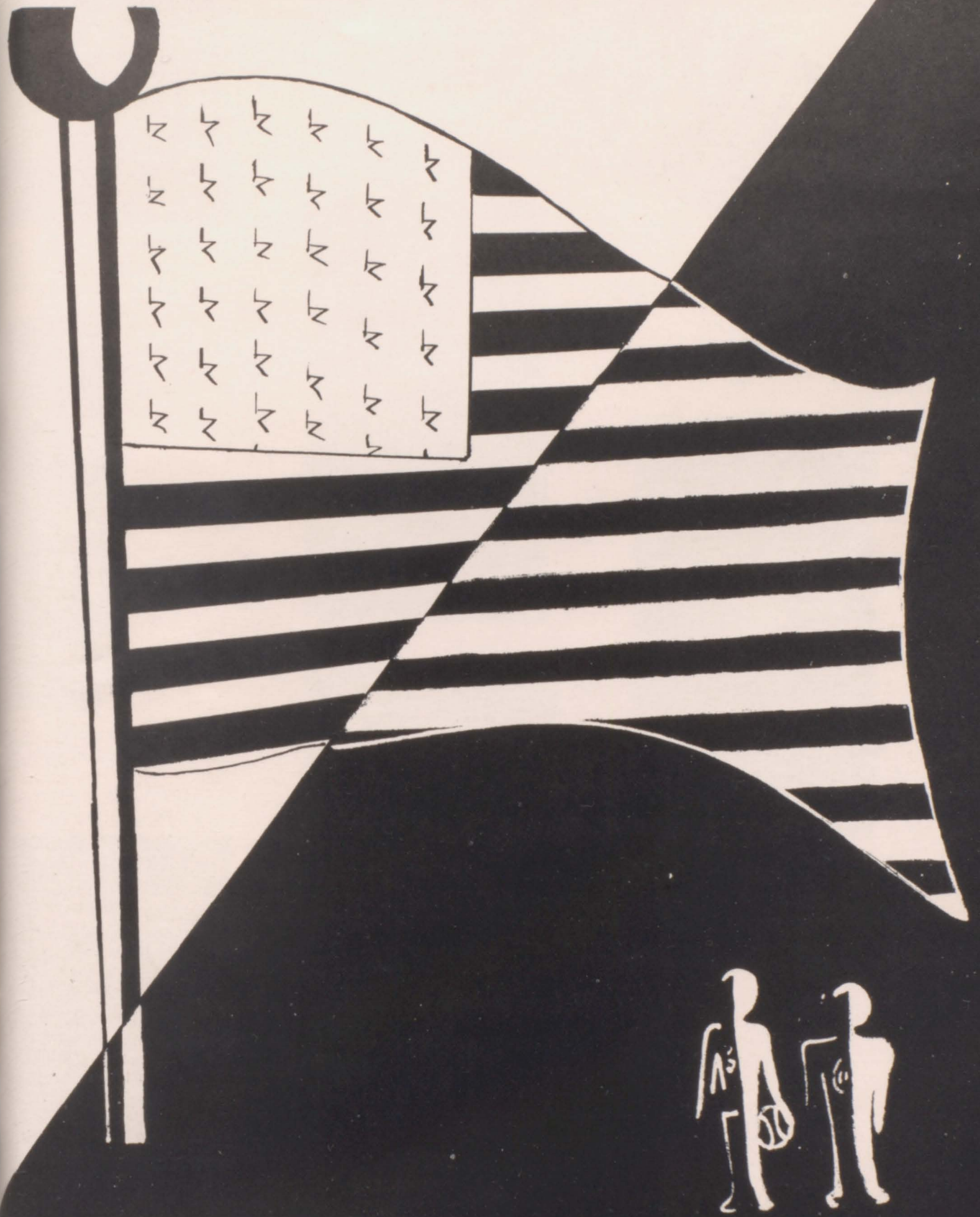


Clarinet Quartet



Brass Quartet

ATHLETICS



RAIDER

Harold Townsend
Full-Back



Tom Johnson
Half-Back



Jerry Kever
Quarterback



Phil Sturdevant
Right End
Hawkeye Eight 2nd Team



Keith Riley
Right Tackle

Lonnie Timmerman
Right Guard



VARSITY



Richard Bohanan
Center

Hawkeye Eight 2nd Team

Donald Riegel
Half Back



Glen Mayo
Left End



Alvus West
Full-Back

Dick Gibson
Left Guard



Dean Curtis
Left Tackle



RED RAIDER SQUAD



FRONT ROW, LEFT TO RIGHT: Lonnie Timmerman, Keith Riley, Tom Johnson, Richard Bohanan, Phil Sturdevant, Dick Gibson, Dean Curtis, Alvis West, Glenn Mayo, Don Riegel, Jerry Kever. SECOND ROW, LEFT TO RIGHT: Bob Scott, Bill Miller, Doug Sickler, Teddy Turner, Richard Bailiff, Stanley Johnston, Percy Keith, Glenn Huntington, Harold Townsend, Gary Johnson, John Lovely, Francis Tranbarger. THIRD ROW, LEFT TO RIGHT: Glenn Farris, Fred Arbuckle, Melvin Winston, Jack Harvey, Darl Johnson, Bob Wilkinson, Cletus Mercier, Dale O'Dell, Gary Easterile, David Schafroth, Dick Hatton, Bill Farris. FOURTH ROW, LEFT TO RIGHT: Jerry Sickles, Jim Curtis, Norman Naven, Danny Schaffer, Gene Havens, Ike Thompson, Larry Carmichael, Darl Calkins, Jerry Peckham, Larry Lenz, Bernard Coulthard.

The Corning Football squad worked hard with inexperienced material to keep a good standing in the Hawkeye Eight Conference. Seven Conference games were played of which three were won and four lost. This good standing was achieved through the able coaching of Chuck Uknes and his assistant Lee Wachenheim, and put Corning in fifth place in the final standings of the Hawkeye Eight Conference.

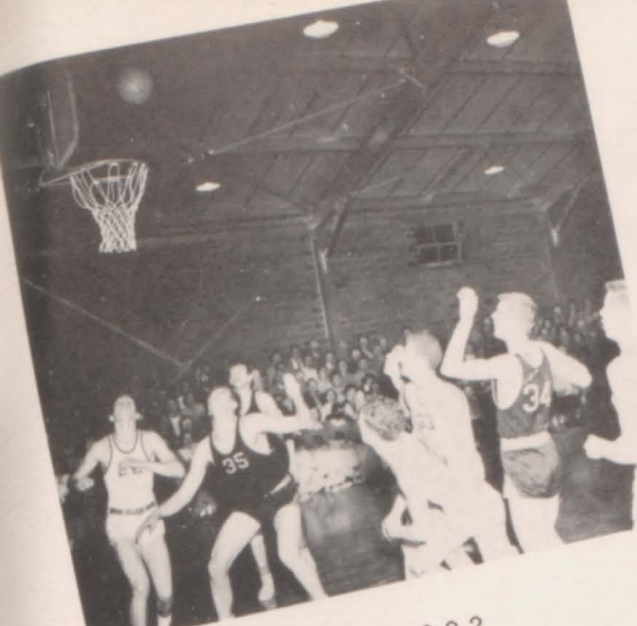
Corning		Opponent
13	Mt. Ayr	33
12	Creston	19
6	Red Oak	56
25	Clarinda	6
18	Villisca	12
0	Atlantic	20
0	Shenandoah	52
0	A.L. Council Bluffs	14
19	Glenwood	12



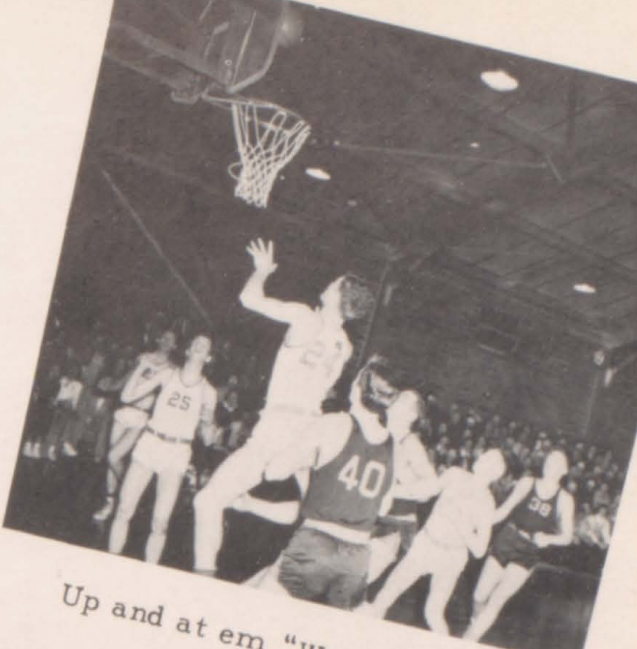
Coach Uknes and Coach Wachenheim.

Extra Point---Mt. Ayr Game.

THE TEAM IN ACTION



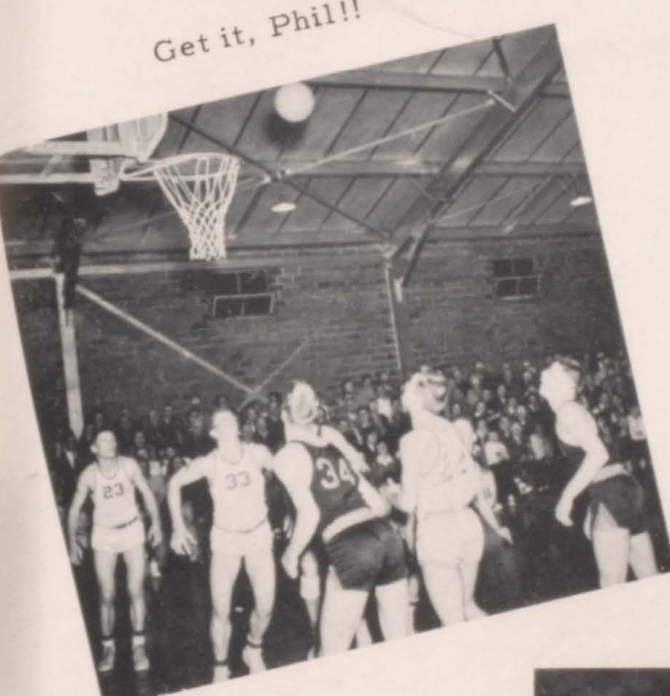
Its in ???



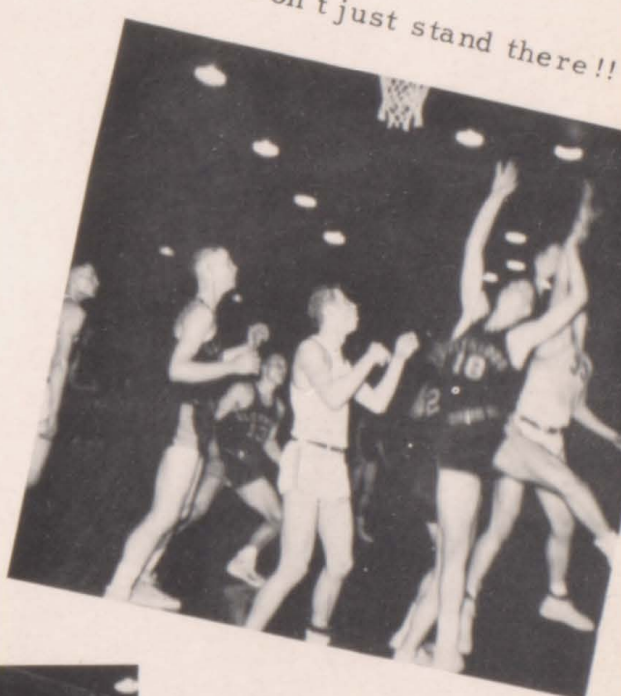
Up and at em "Watermelon"!

RAIDER RECORD

	Home		Away	
	Corning	Visitor	Corning	Visitor
Villisca	54	58	44	37
Creston	55	62	44	43
Clarinda	35	41	44	54
Atlantic	51	55	46	59
Glenwood	43	56	47	36
Shenadoah	59	48	63	60
Red Oak	43	51	48	63



Get it, Phil!!

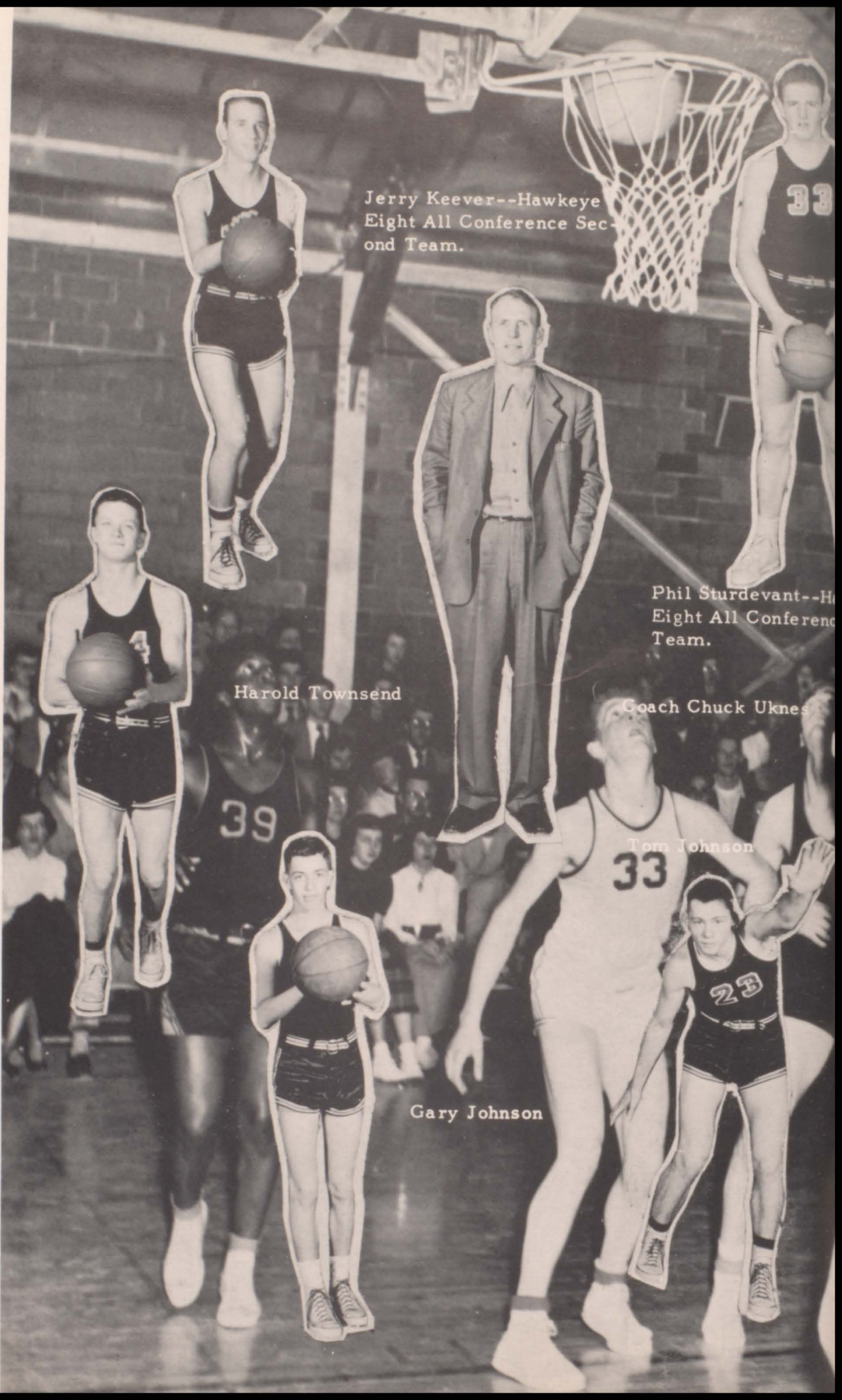


Don't just stand there!!

Jump!!!



R A I D O E R



Jerry Keever--Hawkeye
Eight All Conference Sec-
ond Team.

Phil Sturdevant--H
Eight All Conferenc
Team.

Harold Townsend

Coach Chuck Uknes

Tom Johnson

Gary Johnson



Glenn Mayo



Don Reigel

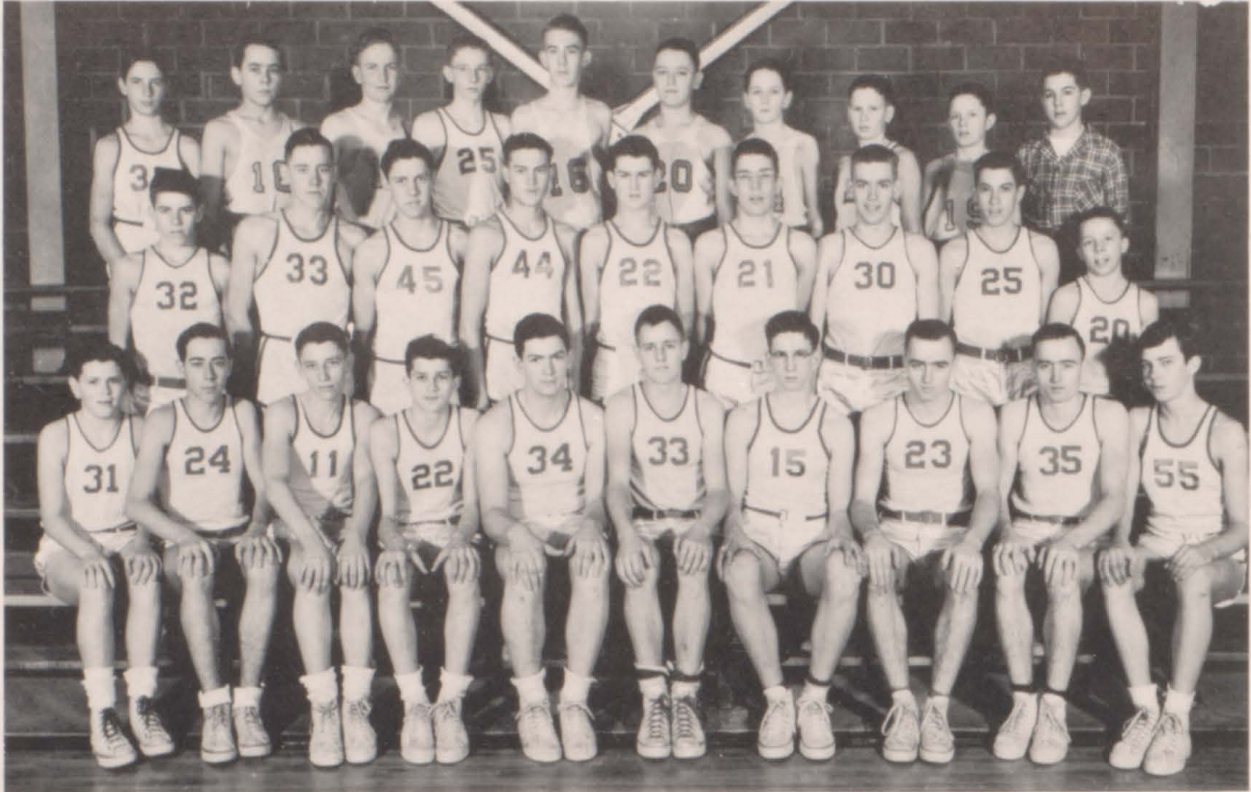
VARSITY



FIRST ROW: Jerry Kever, Tom Johnson, Glenn Mayo, Richard Bohanon, Phil Sturdevant, Ted Kinne, Larry Carmichel, Harold Townsend, Bob Scott. SECOND ROW: Bill Farris, Myron Kempton, Lonnie Timmerman, Gordon Sickler, Gary Johnson, Don Riegel, Richard Bailiff, Fred Arbuckle, Ronnie Rubin.

F A R R I S T B

FRESH SOPH SQUAD



FIRST ROW: Dick Hatton, Dick Stanley, Robert Thomas, Jerry Peckham, Carol Beemer, Darwin Snyder, Ralph Neill, George Rogers, Harley Rogers, Bob Hansen. SECOND ROW: David Schafroth, Merle Jordening, Jerry Russell, John Lovely, Fred James, Kenneth Booth, Doug Sickler, Jim Curtis, Glenn Farris. THIRD ROW: Bill Gibson, Lee West, Bob Thompson, Jon Dotson, Bob Law, Larry Johannes, Dean Davis, Verlin Dicks, Ed Scott, Glenn Johnson.



Coach Lee Wachenheim

The Fresh-Soph squad was newly organized this year to give boys in their first year of High School more opportunity to play basketball, and to give them experience and training for future years on the varsity team.



Carrol Beemer, George Rogers, Darwin Snyder, Harley Rogers, John Lovely, Dick Stanley, Jerry Peckham, Doug Sickler, Jim Curtis, David Schafroth, Dick Hatton, Verlin Dicks, Glenn Farris.

BEST SPORT



- Frosh Jerry Peckham
(Not Shown)
- Soph David Schafroth
- Jr. Rich Bailiff
- Sr. Don Riegel

BEST WRESTLER



BASKETBALL



- Frosh Glenn Farris
- Soph Jim Curtis
- Jr. Jerry Keever
- Sr. Tom Johnson

BEST PLAYER

FOOTBALL



- Frosh Ted Turner
- Soph Doug Sickler
- Jr. Harold Townsend
- Sr. Alvus West

- Frosh Bob Thompson
(Not Shown)
- Soph Elnora Selby
- Jr. Glen Mayo
- Sr. Dick Gibson

BEST CHECKER PLAYER



- Frosh John Cooney
(Not Shown)
- Soph Connie Hall
- Jr. Donna Nolte
- Sr. Ted Kinne

FASTEST RUNNER



- Frosh Ed Scott
- Soph George Rogers
- Jr. Glen Huntington
- Sr. Marvin Dhone

BEST VOLLEYBALL PLAYER



- Frosh Tom Walford
- Soph Anita Cullen
- Jr. Gary Easterlie
- Sr. Dale O'Dell

BEST PING PONG PLAYER



SPORTS WHO SHOWS WHO



FIRST ROW: L. Castillo, R. Gillet, R. Simmons, B. Ruben, T. Wright, S. Schafroth, C. Stuvick, U. Dix.
 SECOND ROW: Howard Larimer-Coach, C. Steinfort, R. Bressler, D. Palmer, D. Thompson, J. Keith, B. Weeks.
 THIRD ROW: J. Weeks, D. Dunlavy, Dickson, J. Fry.



J. Keith, R. Bressler, R. Symmonds, S. Schafroth, T. Wright, D. Thompson.

FIRST ROW: T. Wright, R. Symmonds, R. Bressler, J. Keith, S. Schafroth, D. Thompson. SECOND ROW: D. Stuvick, R. Given, M. Leonard, D. Steinforth, L. Miller, V. Dix.



L
R
H
A
C
H

A
T
H
L
E
T
I
C
S



SEVENTH GRADE

FIRST ROW: Jack Weeks, Donna Lee Jensen, Mary Lou Kingery, Dick Chase, Darryl Rhodes, Larry Hatton, Larry Smith, Bernard Weeks, Billy Klages, Diane Wilmarth, Colette Devereaux. SECOND ROW: Vernon Dicks, Helen Spring, Margery Maas, David Steinfort, Merlyn McIntire, Charlie Jones, Jim Fry, Merlin Dixon, Gary Williams, Larry Miller, Cheryl Symonds. THIRD ROW: Janet McGaffin, Joyce Brace, Bonnie Knerr, Norma Long, Dona Toghry, Robert Resh, Marjean Posten, Mary Alice Bauer, Linda Pennington, Larry Castillo, Arvid Hiley.

GRADE FACULTY



FIRST ROW:
Miss Cain
Mrs. Wachenheim
Miss Staley
Miss Carper
Mrs. Chappel
Miss Sobraske
SECOND ROW:
Mrs. Currie

Miss Bennison
Mrs. Heaton
Miss Marolf
Miss Johnson
THIRD ROW:
Miss Ryan
Miss Lyons
Miss Crowley
Miss Turner

FIRST ROW: Vanice Jensen, William Thomas, Sandra Steuckradt, Beverly Drew, Karen Dotson, Mary Lu Larson, Waunetta Reed, Ronald Symonds, Bob Ruben, Raymond Bressler, Bill Leonard, John Keith, David Dunlavy, Dwaine Palmer. SECOND ROW: Connie Steele, Donna Janky, Carolyn Posten, Evelyn Kingery, Pat Thompson, Karen Rae Kembery, Clifford Greensfield, Rosemary Theil, Jane Biggar, Lois Yearington, Deloras Holker, Sherry Updike, Kathy Campbell, Jean Taity, Helen Russell, Monica Waters. THIRD ROW: Dixie Sickler, Sally Carmicheal, Betty Ann Kinne, Dale Stuvick, Connie Wild, Marcia DeVore, Terry Wright, Carol Ann Devereaux, Richard Givan, Ronald Brazeal, Steven Schafroth, Richard Gillet, Darwin Thompson, Vernon Coulthard, and Donald Klages.

EIGHTH GRADE



ENDORSEES

Adams County R. E. A.

American Theatre

Anderson's & Miller Oil

A. T. Wheeler & Son

Bryon B. Stanley, Atty.

Campbell and Tindell

Candy Kitchen

Cardins Bootery

Carl Riegel Cabinet Shop

Chevrolet Garage

Coffee Shoppe

Corning Concrete Co.

Corning Hatchery

Corning Oil Co.

Corning Rendering Co.

Cudahy Produce

Curry and Mack Hardware

Dawson Cafe

Dean Radiator and Sewing Center

Dr. Bain

Dr. Fry

Dr. McAlpin

Dr. Musschamp

Earl F. McClelland, Atty.

Farm Service Co-op Exchange

Farmers Mutual Ins. Ass.

Free Press

Harold Young Trucking

Harvey Kittleman, Atty.

Hills Ice and Locker Service



Home Bakery

Janky Jewelry and Furniture

Jennings and Cunningham, Veterinarians

Karstensen's Garage

Keever Hardware

Lauvstads Store

Lavelly and Readhead

Larsons and Jones, Insurance

Lee Watts, Atty.

Lines Furniture and Undertaking

McClelland Drug Store

Midwest Refg. Service

Morgan Implement

O. E. Abbey, Real Estate, Ins. and Loans

Okey Vernon National Bank

Omar Bakery

Owen "Buck" Schafroth

Parker Cleaner

Parker Jewelry

Paul's Feed and Supply

P. M. Place Store

Ray Davis, Ins.

Red Star Mills

Ruben Bros. Motor Co.

Silsby's Super Market

Skylark Service

Stuvick Oil Co.

Thompson Electric Co.

Turner's Dept. Store

United Foot Store

Wilmarth Oil Co.

Weaver Engineering Co.

INDEX

- Adams, Gene 26
 Arbuckle, Fred 66, 19, 69, 54, 40
 Arbuckle, Mary Jane 26, 56, 59, 61, 62
 Badgett, Marie 22, 45, 22, 32
 Bailiff, Joyce 12
 Bailiff, Richard 8, 19, 66, 71, 69, 54, 40
 Barton, Dortha 22
 Bauer, Paul 22, 59, 47, 61, 62,
 Baumann, Donald 22, 32, 47, 28
 Beath, Arnold 19, 59, 47, 60, 61, 62
 Beemer, Carrel 22, 70, 41
 Beemer, Norman 26, 45
 Bennett, Sonja 26, 45
 Bennington, Sharon 26, 45
 Berscheid, Bernice 26, 45
 Berscheid, Charlotte 19, 44
 Bixler, Carol 12, 45
 Bixler, Cheryl 12, 45, 50, 54, 56, 39
 Boelling, Barbara 22, 45, 59, 61
 Boelling, Betty Jean 11, 44, 59, 61, 62
 Boham, Darlene 19, 45, 54, 128
 Bohanan, Carlton 19, 50
 Bohanan, Marilyn 44, 19
 Bohanan, Richard 12, 42, 65, 66, 32, 69, 40, 39
 Booth, Kenneth 26, 46, 47, 70
 Boswell, Berneice 19, 34, 46, 47
 Boswell, Patricia 26, 45
 Brace, Guy 24, 41
 Brenton, Ronald 19, 46, 47
 Brown, Wayne 12, 46, 47
 Briggs, Marjorie 22, 45
 Burgan, Barbara 11, 45, 56, 58, 59, 61, 62, 34
 Calkins, Daryl 22, 66, 47
 Campbell, Jackie 26, 41
 Campbell, Sharon 19, 44, 56
 Carmichael, Larry 19, 66, 69, 40
 Carter, Ramona 44, 22
 Case, Hazel 19, 37, 56, 59, 61, 62
 Castillo, Donna 22, 31, 34, 44, 54, 59, 60, 28,
 61, 62
 Chafa, Leta 22, 45, 59, 54, 61
 Clement, Carmen 11, 56, 58, 46, 47, 56
 Cooney, John 26, 27, 71, 41
 Cooney, Weldon 12, 47, 39
 Cooper, Ruby June 22, 46
 Coulthard, Bernard 26, 66
 Cullen, Anita 22, 24, 71, 38
 Curtis, Dean 19, 65, 66, 46
 Curtis, James 22, 66, 46, 70, 71
 Curtis, Patsy 26, 45
 Damewood, Larry 26, 41
 Damewood, Sam 26
 David, Ila 12, 54
 Davis, Dean 26, 46, 70
 Dewees, Charles 26, 59, 61, 41
 Dhone, Marvin 13, 50, 71, 39
 Dicks, Verlin 26, 70
 Dillinger, Dorothy 24, 44
 Dillon, Gene 19, 46, 47
 Dixon, Ivan 26, 41
 Dotson, Darwin 11, 56, 58, 70, 54
 Dotson, Jon 26, 59, 70, 62, 41
 Dotson, LeeRoy 19, 40
 Drennan, Galen 13, 40
 Easterlie, Gary 19, 66, 71, 28, 40
 Edwards, Denny 22, 47
 Farris, Bill 19, 69, 40
 Farris, Glen 26, 41, 66, 70, 71
 Firkins, Norman 8, 26, 27, 47, 28
 Fishell, Phyllis 19, 40, 45, 34
 Freshour, Jerry 13
 Fuller, Marvin 13, 47
 Gaskill, Beverly 26, 34, 59, 61, 62
 Gaskill, Janice 13, 45, 56, 58, 59, 61, 62
 Gearheart, Janice 13, 45
 Gearheart, Jean 19, 31, 45, 54
 Gebbie, Arthur 26, 47, 54
 Gebbie, John 26, 47
 Gebbie, Patricia 22, 45
 Gentle Phyllis 22, 31, 45
 Gibson, Richard 13, 37, 40, 42, 50, 65, 66, 28, 71
 Gibson, William 8, 26, 27, 70, 41
 Coldsmith, Joan 19, 21, 45
 Groff, Keith 22, 47
 Haggerty, Larry 26, 47
 Hair, Kathryn 46
 Haley, Deloris 13
 Haley, Shirley 22, 45
 Haley, Twylla 13, 44
 Hall, Connie 22, 45, 59, 71, 62
 Hall, Earl 19, 70
 Hansen, Robert 54, 41
 Hardisty, Donna 23, 44
 Harlow, Anna Bell
 Harrison, Carolyn 14, 56, 34, 49, 60, 54, 61, 62
 Harrison, Donald 26, 56, 59, 61, 62, 41
 Harrison, Richmons 14, 47
 Harvey, Betty 26, 44
 Harvey, Carolyn 14, 45
 Harvey, David 26
 Harvey, Frances 20, 44
 Harvey, Jack 8, 23, 24, 66, 47
 Hatton, James 26, 47
 Hatton, Richard 26, 54, 66, 70, 71
 Hatton, Sally 23
 Havens, Gene 8, 20, 23, 66, 47
 Hayes, Fred 14
 Hickman, Ralph 14, 47
 Hight, Bruce 26, 41
 Hight, Marilyn 14, 45, 39
 Hill, Jack 20, 47
 Hogan, Janice 11, 32, 56, 58, 30, 28, 53, 39
 Holbrook, Helen 23, 44, 32,
 Houck, Norvell 12, 20, 47, 30
 Huntington, Glenn 20, 66, 47, 71, 54
 Inman, Coleen 20, 45
 Jacobs, Dale 14, 54
 Jacobs, Helen 26
 Jacobs, Velma 26, 45, 56, 59, 61, 62
 James, Fred 23, 47
 Janky, Betty 29, 59, 56, 61, 62
 Janky, Harry 58, 59, 56, 20, 61, 62, 40
 Jensen, Patricia 8, 23, 32
 Johannes, Ella Mae 8, 23, 46, 32
 Johannes, Larry 46, 70
 Johannes, Louis 27, 46
 Johnson, Darl 14, 66
 Johnson, Dorothy 14, 44, 32
 Johnson, Gary 66, 20, 68, 71, 69, 40
 Johnson, Glenn 23, 40, 46, 54, 70, 68, 71, 69,
 39
 Johnson, Linnea 45, 27, 54
 Johnson, Tom 15, 42, 54, 64, 66
 Johnston, Stanley 15, 42, 66, 47
 Johnston, Violet 45, 20, 54, 34
 Jordening, Joyce 46, 27
 Jordening, Merle 23, 46, 70
 Keever, Jerry 42, 54, 64, 66, 20, 68, 69, 28, 40
 Keith, Percy 66, 23, 40
 Kempton, Myron 20, 47, 69
 Kimball, Jean 44, 23
 King, Eleanor 59, 44
 Kingery, Eleanor 27
 Kingery, Francis 27
 Kingery, Marilyn 46, 27
 Kinne, Connie 46, 20, 32
 Kinne, Ted 8, 15, 40, 32, 71, 69, 40, 39
 Kirkpatrick, Evelyn 46, 8, 15, 50
 Kirkpatrick, Betty 45, 23, 20, 50, 28
 Kirkpatrick, Joyce 46
 Kneller, Charlotte 15, 45, 50, 39
 Knerr, Eva 44, 20
 Law, Robert 27, 41
 Lawrence, Ernestine 45, 21, 20, 32
 Lawrence, Mary 15, 44, 39
 Lawrence, Phillip
 Lenz, Larry 66, 23, 47
 Lindhammer, Janice 15, 45, 56, 54
 Lines, Karen 59, 20, 54, 61, 62
 Little Leon 15, 47
 Long, Edith 45, 47, 27, 8, 27, 26, 32, 28
 Lovely, John 66, 23, 47, 70

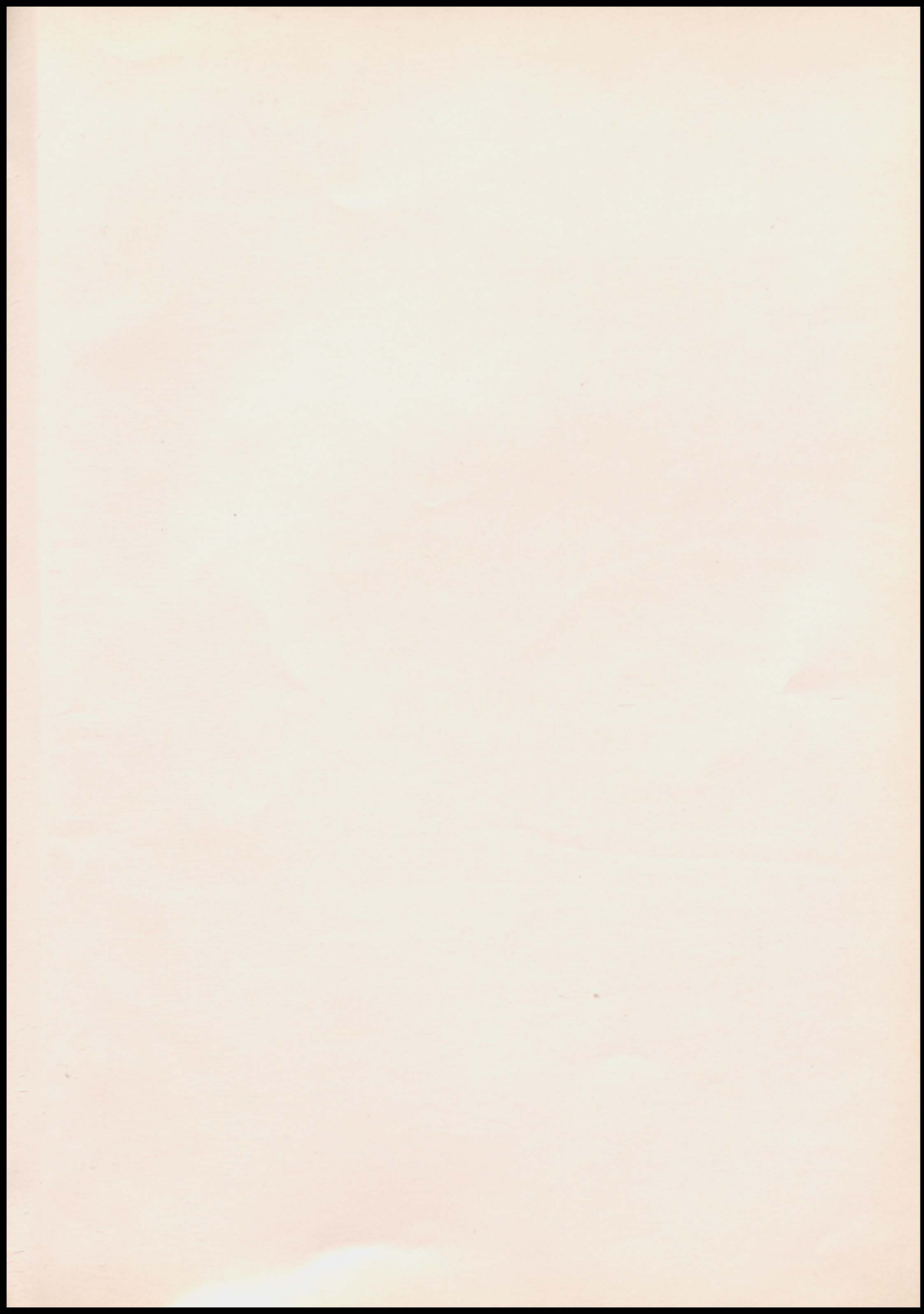
Lundquist, Doris 15, 46, 50, 39
 Maas, Stanley 20, 59, 61, 62, 40
 Mains, Duane 20, 47
 Mayo, Glenn 42, 8, 65, 20, 69, 54, 40
 McGregor, Louis Jean 45, 27
 McManis, Allen 20, 47
 McMurray, Lotta 45, 16, 32
 McMurray, Raymond 23, 41
 Means, Pat 16
 Mercier, Cletus 58, 59, 66, 16, 61, 62
 Mercier, Marilyn 59, 27, 62
 Miller, Bill 66, 20, 40
 Moore, Doris 16, 44, 39
 Moore, Jane 58, 59, 56, 27, 61, 62
 Murdock, Carolyn 16, 44
 Murdock, Roger 27, 47
 Mosier, Richard 21, 40
 Mosman, Verla 21, 45, 50
 Narigon, June 27, 45, 56, 59, 61
 Naven, Norman 23, 66, 47
 Neill, Marilyn 16, 46, 32, 28
 Neill, Ralph 27, 47, 70, 39, 62
 Nelson, Marilyn 23, 46, 53
 Nelson, Robert 27, 47
 Nelson, Ruby June 46, 23
 Nolte, Donna 21, 45, 71
 Norcross, Gary 23, 24, 47, 30, 54
 O'Dell, Dale 16, 8, 66, 71, 40, 39
 O'Riley, Beverly 21
 O'Riley, Juanita 27, 46, 47
 Palmer, Lois 27
 Paul, LoRaine 16, 46, 47
 Peckham, Jerry 27, 66, 47, 70, 71
 Penn, Shirley 23, 45, 56
 Pennington, Phyllis 45, 27
 Perry, Doyle 11, 56, 58, 59
 Peterson, DeLoris 31, 34, 44, 59, 60, 61, 62
 Peterson, Roswell 47
 Piercy, Jo Ann 27, 46, 59, 61
 Piercy, Junior 21, 47
 Preston, Conie 24, 46
 Preston, Shirley 46
 Quinn, Ellen 21, 44
 Quinn, Katherine 17, 8, 44, 39
 Quinn, Patricia 27, 44
 Reed, Betty 27, 44
 Resh, Katherine 17, 34
 Resh, Peggy 27, 46, 47, 54
 Rhodes, Donna Rea 8, 24, 56, 45, 58, 54
 Richey, Claire 17, 45
 Richardson, Marvis 45, 31, 21, 59, 60, 61, 28
 Riegel, Donald 11, 40, 42, 59, 65, 66, 71, 69, 61
 62, 39
 Riegel, Iola 17, 44

Riley, Keith 8, 7, 42, 59, 64, 66, 61, 62, 40
 Ritmour, Janice 24, 46, 32
 Roberts, Glenn 27, 46, 47
 Roberts, Larry 27, 46, 47
 Roberts, Rita 27, 37, 45, 54, 28
 Rodman, Beverly 27, 46
 Rodman, Richard
 Rogers, George 24, 70, 71
 Rogers, Harley 24, 37, 70, 71
 Ruben, Norma 27, 45, 59, 61
 Rubin, Ronald 21, 37, 47, 69
 Russell, Boyd 24, 47
 Russell, Earl
 Russell, Jerry 24, 47, 70, 54
 Russell, Rosemary 17, 27, 46
 Russell, Verlee
 Ryan, Loretta 27, 44
 Schafer, Dannie 27, 66, 47
 Schaffer, Deryl, 27, 47
 Schaffer, Donna 24, 37, 45
 Schafroth, David 24, 41, 66, 70, 71, 41
 Schafroth, Jo Anne 1, 4, 17, 28, 38, 34, 45, 50,
 58, 59, 60, 28, 61, 62, 54, 30, 52, 53
 Schooling, Ronald 27, 46
 Scott, Edward 27, 46, 70, 71
 Scott, Robert 17, 37, 42, 66, 69, 28, 40, 39
 Selby, Betty 27, 44
 Selby, Elnora 24, 44, 71
 Sherlin, Elizabeth 24, 25, 32, 54
 Shuler, Henry William Bill 27, 59, 54, 61, 41
 Sickler, Douglas 24, 41, 42, 58, 66, 70, 71, 28
 Sickler, Gordon 8, 17, 69, 40, 39
 Sickles, Jerry 28, 47
 Simmons, Donald 17, 40, 39
 Smyser, Joyce 28
 Snyder, Darwin 28, 70
 Stanley, Richard 24, 70, 41
 Steinfort, Donna 46, 24
 Stice, Jean 46, 28
 Stice, Vivian 24, 46
 Stillinger, Janet 45
 Stillinger, June 45, 11
 Sturdevant, Edith 28, 46
 Sturdevant, Deloris 21
 Sturdevant, Phillip 18, 39, 64, 40, 66, 68, 71, 69
 Stuvick, Donna 44, 28
 Sullivan, Edward 18
 Sullivan, Maurice 21, 40
 Thomas, Alice Rae 46, 59, 56, 24, 61, 62, 28
 Thomas, Robert 24, 70, 47
 Thomas, Shirley 44, 18
 Thompson, Gary 59, 28, 61, 62, 41
 Thompson, Harold, 66, 28, 41

Thompson, Robert, 37, 28, 47, 71 54
 Timmerman, Lonnie 67, 66, 21, 47, 69
 Tindall, Cheri Kay 45, 28, 54
 Townsend, Harold 42, 64, 66, 40, 21, 68,
 69
 Townsend, Roberta 46, 28, 32
 Tranbarger, Francis 66, 24, 41
 Turner, Ted 41, 59, 66, 26
 Vernon, Carlton 54, 59, 18, 61, 40, 39
 Vernon, Linda 45, 59, 56, 28, 61, 62
 Vogel, Donald 28, 61, 62
 Walford, Thomas 28, 47, 71
 Walford, Wayne 21, 47
 Warnock, Glea 45, 28
 Weeks, Mildred, 21, 44, 50
 West, Alvus 58, 65, 66, 18, 71, 39
 West, Erma 47, 46, 56, 18, 39
 West, Bill 21, 50, 40
 West, Lee 28, 70, 47
 Westlake, Betty 44, 18, 39
 Westlake, Jackie 28, 47
 Westlake, Jerry 28, 41
 Westlake, Marie 45, 28, 32
 Wever, Kent 59, 24, 61, 40
 Wilkinson, Bob 66, 21
 Wilmarth, Darleen 46, 21
 Wilmarth, Pauline 46, 24, 32
 Winstone, Melvin 66, 21, 47
 Wycoff, Mary Lou 46, 28, 59, 61
 Wynn, Dale 66, 28, 47
 Young, Ronald 59, 28, 61, 62, 41
 FACULTY
 Collins, Mahlon 59
 Currie, Ralph 5
 Doyle, John 5, 50
 Dunlavy, D.D., 4, 30
 Gauthier, Mary 6
 Green, Hazel 5
 Helmers, Donald 5
 Hentsch, Gertrude 6
 Housh, Barbara 6
 Hoover, Lester 30
 Kazebeer, Eva 6, 45, 24
 Larimer, Howard 5
 Pfander, Alice, 5, 45
 Schulz, Margaret 6
 Traxler, Howard 5
 Turner, Almira 6, 31, 44
 Turner, Vivian 5, 53
 Uknes, Bonnie 6
 Uknes, Charles 5, 42, 68, 69
 Wachenheim, Lee 6, 42
 Whipple, Carl 47, 1, 24, 6, 26











MYERS *deep-Tone* YEARBOOKS

THE PACEMAKERS OF QUALITY

MYERS AND CO. INC.

TOPEKA, KANSAS

THE UNIVERSITY OF CHICAGO
PRESS

