

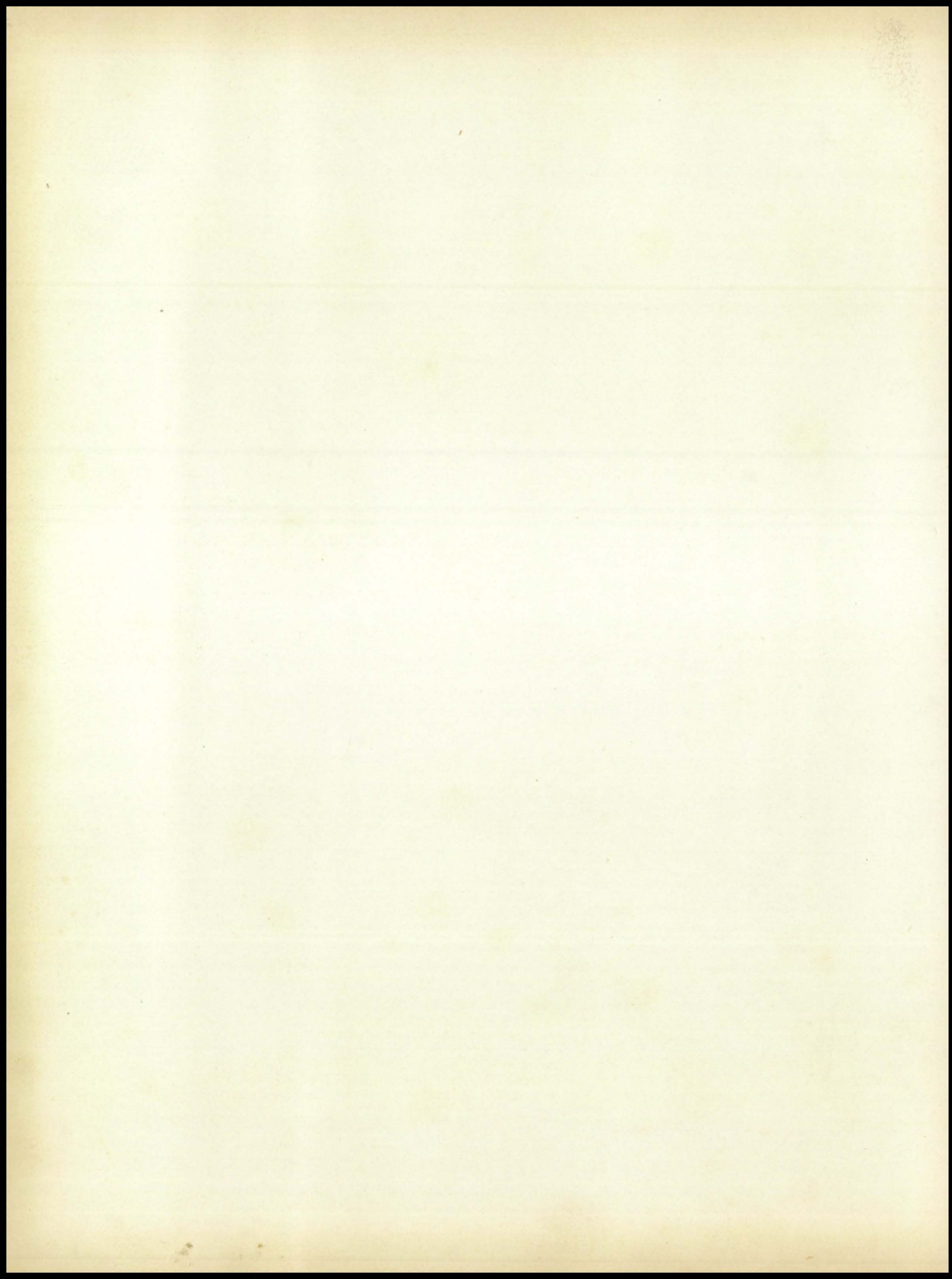


Red Raider

1955









*die, Pat, Joyce, Marilyn, Doug, Marjorie, Alice Rae, Marilyn,
Lyle, Janice, Glea, Edward, Linnea, Cheri Kay.*

- C onsiderate and kind always
- O bservant of rights of others
- R eliable in performance of duty
- N otable service to the community
- I ntelligent and worthwhile attitudes
- N oble character
- G ratitude for opportunities

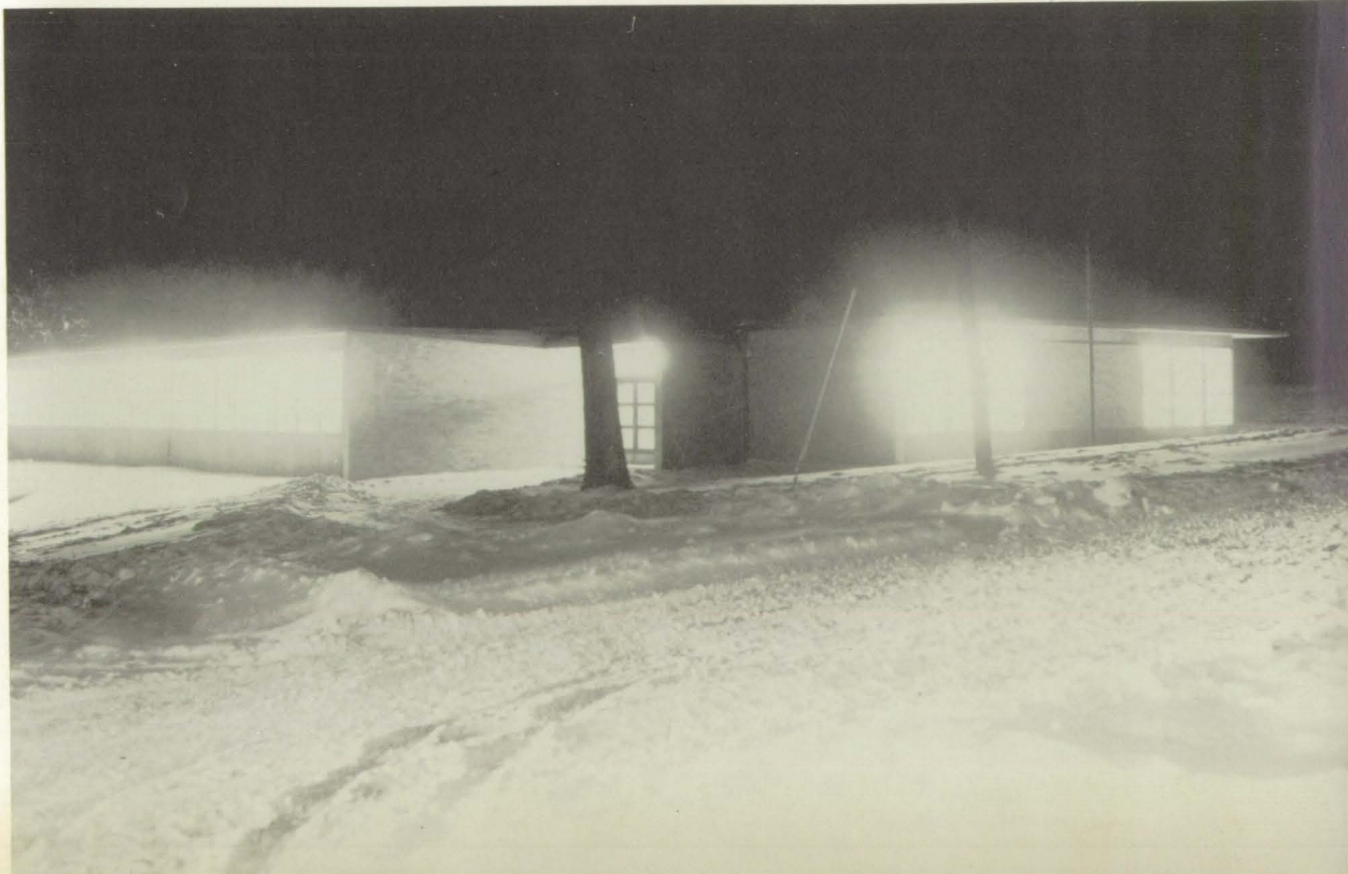
coming high school

D e d i c a t i o n



The Anna C. Craft Building reflects the progress of public education in our community.

The students of Corning High School appreciate the efforts of our Board of Education and members of the community for continuing the development of learning.





MAX LINES



RICHARD TALTY



ED LARSON



GEORGE GITZ

School Board



JOSEPH WHEELER



DONALD WILMARTH



LEFT TO RIGHT: Max M. Lines, E. J. Larson, G. Gitz, J. R. Wheeler, D. Wilmarth, D. D. Dunlavy, R. T. Talty.



BACK ROW, Left to Right: Alice Thomas, Terry Wright, Linda Pennington, Sponsors - Mr. Lundgren and Mr. Currie, Bob Mitchell, Robert Thomas, Don Vogel, Jerry Russell, Jim Curtis, Jane Cotter, Jane Turner. FIRST ROW: Laura Turner, Leta Chafa, Helen Holbrook, Dixie Sickler, Gary Norcross, John Cooney, Marie Westlake, Jean Talty, Edith Long.

Student



Council

OFFICERS

Secretary - Treasurer, Dixie Sickler
 President, Gary Norcross
 Vice-President, John Cooney



Coming Student Council representatives at the Eighth Annual Iowa Council Conference, held at Ames, Iowa. Edith L. , Dixie S. , Gary N. , John C.



Your Council's Work.



D. D. DUNLAVY
Superintendent of Schools
A. B. , Drake University;
M. S. E. , Drake University



ROBERT E. BALL
Principal
University of Iowa B. A. , M. A. ;
Graduate Work, University of Iowa.

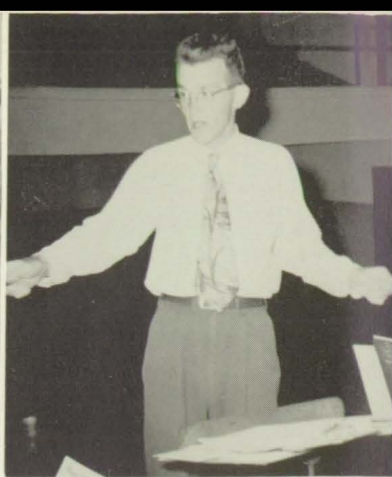
A Administration



ANNA E. LYONS
School Board Secretary



ERNESTINE LAWRENCE
School Secretary



JOHN J. HARRIS
American Problems; Wrestling Coach, Assistant Football Coach.

CAROL J. SANDY
English 10, American Literature.

CARL WHIPPLE
Vocational Agriculture 1, 2, 3; Farm Shop 4; Sponsor F. A., Junior Class.

ROBERT REYNOLDS
Instrumental Music.

Faculty



HAZEL GREEN
Librarian

DUANE LUNDGREN
Physiology, Psychology; Guidance Department; Sponsor of Sophomore Class, Senior Hi-Y, Student Council.



AGNES ROLAND
Spanish, World History; Sponsor of Y-Teens, Sophomore Class.

ALMIRA TURNER
Physical Education; Sponsor of G. A. A., Cheerleaders.

CHARLES SMITH
Biology, General Science, Coach of Junior High Athletics, Baseball.

HOWARD LARIMER
U. S. History, Coach of Basketball; Sponsor of "C" Club.





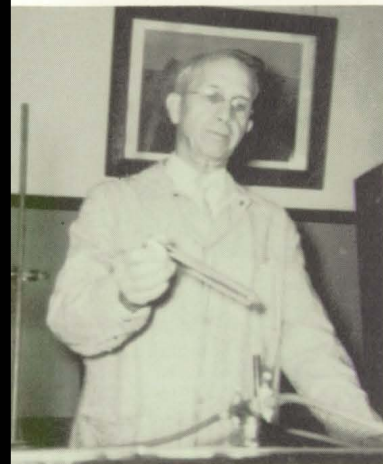
MARY GAUTHIER
Junior Business, Shorthand,
Stenography, Typing 1;
Sponsor Junior Class,
Annual.

ROBERT J. KRALL
Biology, Physical Educa-
tion, Football Coach,
Assistant Basketball Coach;
Sponsor "C" Club.

LORENE MARSHALL
Journalism, English 9;
Sponsor of School Paper,
Freshman Class.

SHIRLEY GARDNER
Home Economics; Sponsor
F.H.A. and Junior Class.

Faculty



RALPH CURRIE
Chemistry, General
Science; Sponsor of Senior
Class, Student Council.

ANNA LYNAM
Remedial Reading



JOHN LENZ
Speech, Latin, English 10,
Drama, Director of Speech
Activities; Sponsor Senior
Class, Radio Club, The-
s-pians, Lagniappe.

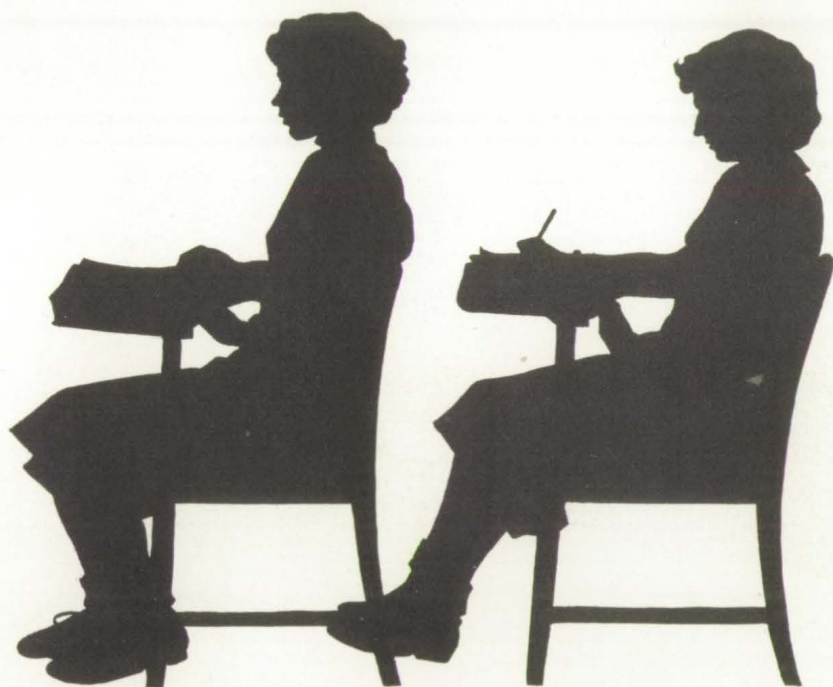
SHEILA THOMPSON
Vocal Music

LESTER HOOVER
Typing 1, Consumer Math,
Bookkeeping, General
Mathematics; Sponsor
Junior Hi-Y and Junior
Class.

EVA KAZEBEER
Geometry, Alegebra 1 and
3, Trigonometry; Sponsor
Y-Teens.



THE SILHOUETTE





Baseball



Wrestling



Office Girl



Prom



Nature Girl



Growing up



Hi-Y



Class Play



Band



Annual



Hi-Y



F.F.A.



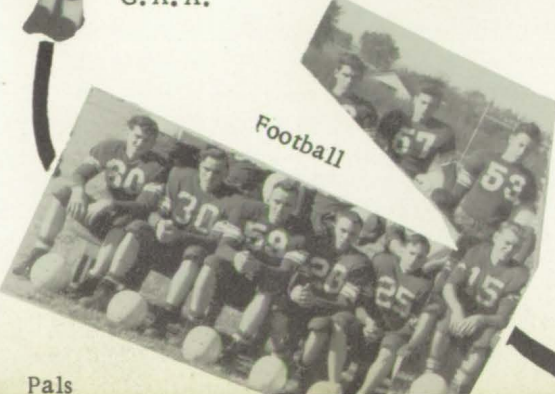
G.A.A.



Librarian



Football



Homecoming



Pals



Class of 1955

PRESIDENT

VICE-PRESIDENT



JIM CURTIS "Curt"
 Ambition: Own an Angus Ranch.
 "C" Club 3, 4; FFA 1, 2, 3, 4; Annual Staff 3, 4; Student Council 4; Paper Royalty Escort 3; Football 1, 2, 4; Basketball 1, 2, 3, 4; Class Officer 4; Honor Roll 1, 2, 3, 4; Drivers Club 4; Intramural Basketball 1, 2, 3, 4.



HARLEY ROGERS
 Ambition: To get rich.
 "C" Club 2, 3, 4; FFA 1, 2, 3, 4; Student Council 3; Annual Royalty Escort 2; Football Letter 3, 4; Basketball 2, 3 - Letter 4; Track 3, 4; Class Vice-President 1, 2, 3, 4; Wrestling 2; Honor Roll 1, 2, 3, 4; Intramural Basketball 1, 2, 3, 4.

SECRETARY-TREASURER

STUDENT

COUNCIL REPRESENTATIVE



LETA CHAFA "Chaf"
 Ambition: Become a successful nurse.
 Y-Teens 1, 2, 3, 4 - President 4; Glee Club 1, 4; Homecoming Royalty 1; Band 2, 3; Pep Club 1; Mixed Chorus 4; Thespians 3 - Secretary and Treasurer 4; Speech Activities 3, 4; Class Secretary and Treasurer 1, 4; Student Librarian 1; Pep Band 2, 3; State Music Contest 2, 3; Senior Class Play; Junior Class Play; Honor Roll 1, 2, 3, 4; Guidance 3, 4; Lagniappe 4; Teenage Drivers Club 4; Intramural Basketball 1, 2, 3, 4.



ROBERT THOMAS "Bob"
 Ambition: Farming.
 "C" Club 3, 4; FFA 1, 2, 3, 4; Student Council 2, 3, 4; Football 1; Basketball 2; Mixed Chorus 4; Thespians 4; Librarian 4; Wrestling 2 - Letter 3, 4; Junior Class Play; Senior Class Play; Honor Roll 1; Intramural Basketball 2, 3.

HISTORIAN

REPORTER



JANICE RITNOUR "Jan"
 Ambition: To achieve happiness in life.
 GAA 4; Annual Staff 3, 4; Paper Staff 4; FHA 1 - Secretary 2, Historian 3; Glee Club 3; Thespians 4; Speech Activities 3; Class Officer 4; Student Librarian 1, 2; National Honor Society 3, 4; Senior Class Play; Drivers Club 4; Radio Club 4; Pep Club 1; Honor Roll 1, 2, 3, 4; Intramural Basketball 2, 3, 4.



CONIE ROSE PRESTON
 Ambition: Receptionist.
 Y-Teens 1; GAA 4; FHA 2 - Secretary 3; Glee Club 1; Guidance Office 3, 4; Honor Roll 1, 2, 3, 4; Intramural Basketball 1, 2, 3, 4.

RETTA MARIE BADGETT "Marie"
 Ambition: Get married and lead a useful life.
 FHA 1, 2, 3, 4; Librarian 1, 2; Honor Roll 1, 2, 3, 4.



PAUL BAUER, JR.
 Ambition: Navy
 FFA 1, 2, 3, 4; Band 2, 3, 4; Pep Band 2, 3, 4; State Music Contest 2, 3, 4; Intramural Basketball 1, 2, 3, 4.

DONALD BAUMANN
 Ambition: Farming or go to Colorado.
 FFA 1, 2, 3, 4; Honor Roll 1, 2, 3, 4; Intramural Basketball 1, 2, 3, 4.



BARBARA BOELLING "Barb"
 Ambition: To be successful and happy in life.
 Y-Teens 1, 2; GAA 3, 4; Paper Staff 4; Creston Festival 1, 2; Band 1 - Letter 2; Pep Band 1, 2; State Music Contest 1, 2; Intramural Basketball 1, 2, 3.



GUY BRACE "Johnny Dark"
 Ambition: To be a good meat cutter.
 Hi-Y 2, 3, 4; Football 4; Basketball 1, 2, 4; Baseball 1, 4; Speech Activities 3; One-Act Play 1; Intramural Basketball 2, 3, 4.

MARJORIE ANN BRIGGS "Marge"
 Ambition: To live a successful and happy life.
 Y-Teens 1, 2, 3; GAA 4; Annual Staff 3, 4; Paper Staff 4; Intramural Basketball 1, 2, 3, 4; Glee Club 1, 2, 3; Thespians 4; Speech Activities 4; Junior Class Play 3; Honor Roll 4; Senior Class Play - Prompter 4; Pep Club 1; Executive Board of Youth Center 1; Annual Royalty 4.



DARYL CALKINS
 Ambition: To live a long life with very little schooling.
 Hi-Y 1; FFA 2, 3, 4; Annual Staff 4; Football 1, 2, 3, 4; Track 1, 2; Wrestling 4; Drivers Club; Sentinel 4.



DONNA CASTILLO

"Cos"

Ambition: To be a success in whatever I undertake.
Y-Teens 1; GAA 2 - President 3, 4; Paper Staff 4;
Student Council 1; Homecoming Royalty 2; Band 1,
2 - President 3, 4; Glee Club 2, 3, 4; Mixed Chorus
2, 3, 4; Thespians 3, 4; Speech Activities 3, 4; Class
President 3; Operetta 3; State Music Contest 2, 3, 4;
Junior Play - Student Director; Honor Roll 3, 4; Sen-
ior Class Play; Basketball Royalty 2; Lagniappe 4;
Cheerleading 1, 2, 3, 4; Pep Club 1; Intramural Bas-
ketball 1, 2, 3, 4.

CHARLES CLOYD

"Skip"

Ambition: Bachelor
Hi-Y 4; Football 4; Speech Activities 4; Wrestling 4.
Attended Omaha North High School.



RUBY JUNE COOPER

"Coop"

Ambition: Secretary
GAA 3, 4; FHA 2; Glee Club 1, 2; Small Vocal Groups
1, 2.

ANITA MARIE CULLEN

"Nita"

Ambition: To be a success.
Paper Staff 4 - Editor; FHA 1; Band 2, 3, 4; Glee Club
1; Thespians 3, 4; Speech Activities 3; Class Officer
2; National Honor Society 3, 4; Junior Class Play;
Honor Roll 1, 2, 3, 4; Office Staff 1, 3.

DOROTHY DILLINGER

"Dot"

Ambition: To get married.
Y-Teens 3, 4; GAA 2; Honor Roll 4; Intramural Bas-
ketball 2, 3.

DENNIS EDWARDS

"Dennis the Menace"

Ambition: To be a rich farmer.
Hi-Y 4; FFA 1, 2, 3; Wrestling 4; Honor Roll 1, 2, 3, 4;
Drivers Club 4; Intramural Basketball 1, 2, 3, 4.

PATRICIA MAY GEBBIE

"Pat"

Ambition: To live a happy and successful life.
Y-Teens 1, 2; GAA Pin 3 - Treasurer 4; Honor Roll
1, 2, 3, 4; Intramural Basketball 1, 2, 3, 4.



PHYLLIS JEAN GENTLE

"Phil"

Y-Teens 1, 2 - Social Chairman 3; GAA 4; Paper Staff 4; Intramural Basketball 1, 2, 3, 4; Glee Club 1, 4; Mixed Chorus 1; Librarian 3; Senior Class Play 4; Cheerleader 1, 2, 3.

CHARLES GRIFFITH

"Chuck"

Ambition: Doctor.
Hi-Y 2, 3, 4; Football 3 - Letter 2, 3; Band 1, 2; Thespians 3; Speech Activities 1, 2, 3, 4; Junior Class Play 3; One-Act Play 2; All-School Play 4.

KEITH GROFF

Ambition: To raise Purebred Angus cattle.
FFA 1, 2, 3, 4; Honor Roll 1.

SHIRLEY HALEY

"Shorty"

Ambition: To become a member of the Armed Forces.

Y-Teens 1, 2; Intramural Basketball 2; Glee Club 1, 4.



CONNIE FAYE HALL

"Pool"

Ambition: Become a teacher.
Y-Teens 1, 2; FAA 3, 4; Paper Staff 4; Intramural Basketball 1, 2, 3; Band 1, 2; Glee Club 3, 4; Mixed Chorus 3; Pep Band 1, 2; Operetta 3; State Music Contest 3, 4; Junior Class Play 3; Honor Roll 1, 2, 3, 4; All-School Play 4; Rec. Executive Board 1; Creston Band Festival 1; State Band Contest 1, 2; Radio Club 4; French Horn Quartet - State Contest 2.

ROBERT HANSEN

"Gus"

Hi-Y 2, 3, 4; FFA 1; Homecoming Royalty Escort 1; Intramural Basketball 2, 3, 4; Basketball 2; Band 1; Class Vice-President 1.

JACK HARVEY

"Jack"

Ambition: Have a successful career.
FFA 1, 2, 3 - Secretary 4; Student Council 1, 2; Football 1, 2, 3 - Letter 4; Intramural Basketball 1, 2, 3, 4; Mixed Chorus 4; Class Secretary 2; Wrestling 4; Junior Class Play 3; Honor Roll 1, 2, 3, 4; All-School Play 4; Senior Class Play 4.





HELEN ANNE HOLBROOK "Pete"
 GAA 1, 2, 3 - President 4; Annual Staff 4; FHA 1;
 Student Council 4; Homecoming Royalty 4; Speech
 Activities 3, 4; Class President 1; Librarian 1, 2;
 National Honor Society 3, 4; Senior Class Play; Honor
 Roll 1, 2, 3, 4; Office Staff 3, 4; Lagniappe Club - Sec-
 retary and Treasurer 4; Drivers Club-Reporter 4; In-
 tramural Basketball 1, 2, 3, 4.

HELEN JACOBS
 Ambition: To work.
 FHA 3; Paper Staff 4.

DONNA SCHAFFER JAMES
 Ambition: Housewife.
 Y-Teens 2; GAA - Pin 3, Letter 4; FHA 1; Home-
 coming Royalty 4; Annual Royalty 2; Glee Club 1;
 Mixed Chorus 1; Speech Activities 1; One-Act Play
 1; Cheerleader 1; Intramural Basketball 2, 3, 4; At-
 tended Gravity High School; Honor Roll 1, 2, 3, 4;
 Guidance Office 4.

FRED A. JAMES "Jess"
 Ambition: California here I come
 FFA 1, 2, 3, 4; Homecoming Royalty Escort 4; Foot-
 ball 2, 3; Basketball 2, 3, 4; Wrestling 1, 2; Intramural
 Basketball 1, 2, 3, 4.



ELLA MAE JOHANNES "Jo"
 Ambition: Marriage.
 Y-Teens 2, 3, 4; FHA 1; Student Council - Secretary
 2; Glee Club 1; Honor Roll 1, 2, 3, 4; Office Staff 1;
 Intramural Basketball 1, 2, 3, 4.

GLENN DEAN JOHNSON "Craig"
 Ambition: To be a rich farmer.
 FFA 1, 2, 3, 4; Annual Staff 3, 4; Football 3; Basket-
 ball 1, 2, 4; Baseball 4; Librarian 2; Honor Roll 1, 2, 3,
 4; All-School Play 4; Intramural Basketball 1, 2, 3, 4.

MERLE JORDENING
 Ambition: To make money without work.
 FFA 1, 2, 3, 4; Football 1 - Letter 4; Basketball 3, 4;
 Track 4; Baseball 4; Mixed Chorus 4; Intramural Bas-
 ketball 1, 2, 3, 4.



ELEANOR KINGERY

Ambition: To be a success in everything I do.
FHA 3, 4; Glee Club 2, 3, 4.

JOYCE KIRKPATRICK

"Joy"

Ambition: To attend college.
GAA 3, 4; FHA 1 - Treasurer 2; Glee Club 1, 4; Student Council 1; All-State Chorus 4; Honor Roll 1, 2, 3, 4; Intramural Basketball 1, 2, 3, 4.

LARRY LENZ

Ambition: To get a diploma this year and then get a good job.
Hi-Y 4; FFA 1, 2, 3; Football 1, 2, 3; Basketball 1, 2, 3; Baseball 3, 4; Intramural Basketball 1, 2, 3, 4.

JOHN LOVELY

"Jon"

Ambition: To work in forestry.
FFA 1, 2, 3, 4; Football 1, 2, 3 - Letter 4; Baseball 3; Wrestling 4; Intramural Basketball 1, 2, 3, 4.



NORMAN NAVEN

"Norm"

Ambition: To be a successful farmer.
"C" Club 4; FFA 1, 2, 3, 4; Football 1, 2, 3, 4; Mixed Chorus 4; Wrestling 4; Senior Class Play; Honor Roll 1, 2, 3, 4; All-School Play 4; Intramural Basketball 1, 2, 3, 4.

MARILYN ANN NELSON

"MAN"

Ambition: To be a successful nurse.
GAA 3, 4; Annual Staff 3, 4; FHA 1, 2, 3; Glee Club 2, 3, 4; Mixed Chorus 4; Drivers Club 4; Student Librarian 1, 2; Operetta 3, 4; All-State Chorus 3, 4; Honor Roll 2; Pep Club 1; Intramural Basketball 2, 3, 4.

RUBY JUNE NELSON

"Rube"

Ambition: Go to college and be an elementary teacher.
GAA 3 - Secretary 4; FHA 1, 2; Glee Club 1, 3, 4; Student Librarian 1, 2; Honor Roll 3, 4; Intramural Basketball 2, 3.





GARY NORCOSS

"Nork"

Ambition: Lead a successful and profitable life.
"C" Club 4; FFA 1, 2, 3 - Reporter 4; Student Council - President 4; Paper Royalty Escort 3; Homecoming Royalty Escort 4; Football - Letter 4; Intramural Basketball 2, 3, 4; Basketball 3, 4; Band 1; Class President 2; Pep Band 1; State Music Contest 1; Honor Roll 1, 2, 3, 4; Drivers Club - Vice President 4.

DONNA REA RHODES

"Rhodesy"

Y-Teens 1, 2, 3, 4; Paper Staff 4; Student Council 1; Homecoming Royalty 3; Band 2, 3, 4; Glee Club 1, 2, 3, 4; Mixed Chorus 1, 2, 3, 4; Thespians 3, 4; Speech Activities 3, 4; Pep Band 3, 4; Small Vocal Groups 2, 3, 4; Operetta 3; Music Soloist 2, 3, 4; State Music Contest 3, 4; Junior Class Play 3; Honor Roll 1, 2, 3, 4.



RAPHAEL ROBERTS

"Ray"

Ambition: Forestry.
Hi-Y 4; "C" Club 3, 4; FFA 1, 2; Student Council 3; Homecoming Royalty Escort 1, 4; Annual Royalty Escort 2; Football 1 - Letter 3, 4; Class President 1; Honor Roll 1, 2, 3, 4.

GEORGE ROGERS

Ambition: Own a Cadillac.
FFA 1 - Award 2, 3, 4; Student Council 2, 3, 4; Football - Letter 3, 4; Basketball 2, 3; Track 3, 4; Class Sentinel 3; Wrestling Letter 2, 4; "C" Club 4.

BOYD RUSSELL

"Floyd"

Ambition: Farming and travel around the world.
FFA 2, 3, 4; Intramural Basketball 2, 3, 4; Basketball 1; Baseball 1; Band - Letter 1, 2, 3, 4; Swing Band 4; Pep Band 2, 3, 4; Operetta 1; Music Soloists 4; State Music Contest 4; Honor Roll 1, 2, 3, 4.

JERRY RUSSELL

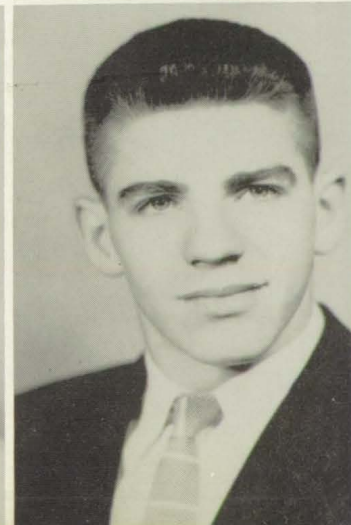
"Jerry"

Ambition: Be a success on a farm.
FFA 1, 2, 3, 4; Student Council 4; Homecoming Royalty Escort 4; Basketball 2, 3, 4; Honor Roll 1, 2, 4; Drivers Club President 4.

DAVID SCHAFROTH

"Buck"

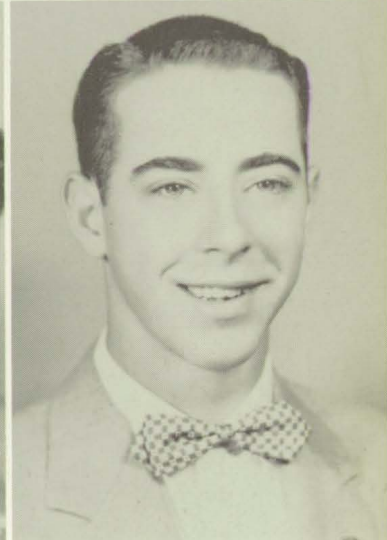
Hi-Y 1, 2, 3, 4; "C" Club 3, 4; Paper Staff 4; Football 2, 4; Intramural Basketball 1, 2, 3, 4; Basketball 1, 2; Track 1, 2, 3; Glee Club 1; Speech Activities 3; Wrestling 1, 2, 3; Operetta 1.



ELNORA JEAN SHELBY "Jean"
 Ambition: California, then?
 GAA 1 - Letter 2, 3, 4; Intramural Basketball 1, 2, 3, 4; Student Librarian 1, 2; Honor Roll 1, 2, 3, 4; Pep Club 1.



JACK DOUGLAS SICKLER "Doug"
 Ambition: To achieve success and happiness.
 Hi-Y 1, 2, 3, 4 - President 2, 4; "C" Club 1, 2, 3, 4; Annual Staff 3, 4; Paper Staff 4; Student Council 1; Homecoming Royalty Escort 2; Annual Royalty Escort 1; Football 1, 2, 3, 4; Intramural Basketball 1, 2; Basketball 2, 3; Track 1, 2; Glee Club 1, 2, 3; Mixed Chorus 1, 2; Thespians 3, 4; Speech Activities 3; Small Vocal Groups 1, 2; All-State Chorus 1; State Music Contest 1, 2; Junior Class Play; Honor Roll 1, 2, 3, 4; Senior Class Play; Radio Club 4; Drivers Club 4.



PATRICIA SLATER "Pat"
 Ambition: Be a nurse, or marriage.
 Y-Teens 1, 3, 4; GAA 2; Student Council 1; Intramural Basketball 1, 2, 3; Librarian 1, 2, 3, 4; Honor Roll 1, 2, 3, 4.

RICHARD STANLEY "Cranley"
 Hi-Y 1, 2, 3, 4; Annual Staff 3, 4; Football 4; Intramural Basketball 1, 2, 3, 4; Basketball 2, 3; Track 2, 3; Wrestling 3.



JEAN STICE "Dean"
 Ambition: Be a pilot.
 GAA 3, 4; FHA 1, 2; Intramural Basketball 1, 2, 3, 4; Glee Club 1, 2, 3, 4; Operetta 2, 3; State Music Contest 1, 2.

VIVIAN STICE "Bobbi"
 Ambition: To be a secretary.
 GAA 3, 4; FHA 1, 2; Intramural Basketball 3; Glee Club 1, 2, 3, 4; Operetta 3; State Music Contest 1, 2; Honor Roll 2, 3, 4.

ALICE RAE THOMAS "Art"
 Ambition: Gain success and happiness.
 Y-Teens 3 - Treasurer 4; Annual Staff 3, 4; FHA 1 - President 2; Student Council 4; Intramural Basketball 1, 2, 3, 4; Band 2; Glee Club 1, 2, 3, 4; Mixed Chorus 1, 2, 3, 4; Thespians 3, 4; Speech Activities 3, 4; Class Officer - Secretary 3; National Honor Society 3, 4; Pep Band 2; Small Vocal Group 1, 2, 3, 4; Operetta 3, 4; Accompanist 1, 2, 3, 4; Music Soloist 1, 2, 3, 4; All-State Chorus 1, 2, 3, 4; State Music Contest 1, 2, 4; Honor Roll 1, 2, 3, 4; All-School Play 1, 4; Senior Class Play 4; Lagniappe 4; Drivers Club 4.



FRANCIS TRANBARGER

"Tranny"

Ambition: Farm.

Hi-Y 1,2,3,4; Football 1,2,3; Basketball (Intramural) 1,2,3,4; Thespians 3, President 4; Speech activities 3; Wrestling 3; Junior Class Play 3.

PAULINE WILMARTH

"Pilly"

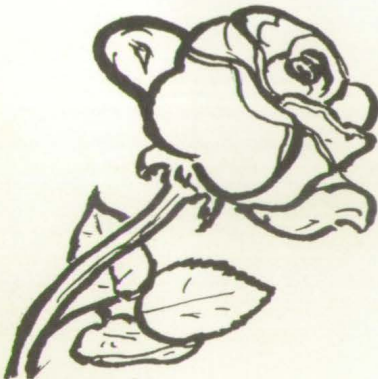
Ambition: Teach school.

Y-Teens 1; GAA 3, Pin 4, Sporthead; FHA 2; Basketball (Intramural) 1,2,3,4; Glee Club 1,2,4; Librarian 2; Operetta 3; Honor Roll 1,2,3,4.



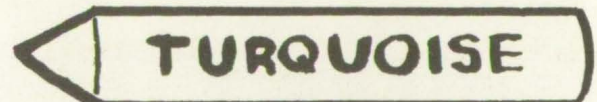
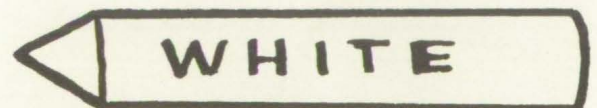
MOTTO

"To the stars through difficulties."



FLOWER

American Beauty Rose.



COLORS

White and Turquoise.



PRESIDENT
Edith Long



SECRETARY
Velma Jacobs



VICE-PRESIDENT
Don Vogel



TREASURER
Sonja Bennett

Juniors

SPONSORS

CARL
WHIPPLE



MARY
GAUTHIER



SHIRLEY
GARDNER



LESTER
HOOVER



MARIE
WESTLAKE



STUDENT
COUNCIL

Mary
Arbuckle



Sharon
Bennington



Bernice
Berscheid



Kenneth
Booth



Patsy
Boswell



John
Cooney

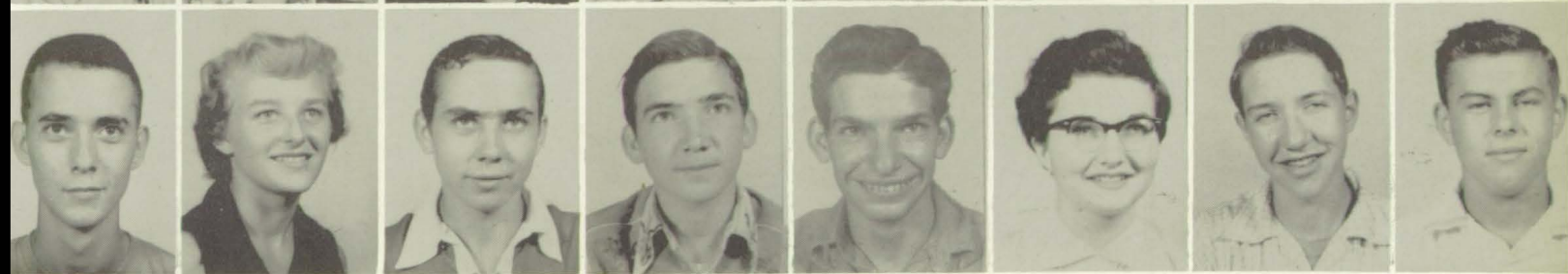


Patsy
Curtis





FIRST ROW: Dean Davis, Charles Dewees. SECOND ROW: Verlin Dicks, Ivan Dixon, Jon Dotson, Jane Drottz. THIRD ROW: Glen Farris, Norman Firkins, Beverly Gaskill, Arthur Gebbie, John Gebbie, Bill Gibson. FOURTH ROW: Larry Haggerty, Bob Hansen, Anna Belle Harlow, Donald Harrison, Betty Harvey, David Harvey, James Hatton, Dick Hatton. FIFTH ROW: Bruce Hight, Kay Houck, Larry Johannes, Lois Johannes, Linnea Johnson, Joyce Jordening, Eleanor King, Marilyn Kingery. SIXTH ROW: Larry Lenz, Lois McGregor, Marilyn Mercier, Jane Moore, Roger Murdock, June Narigon, Ralph Neill, Robert Nelson.



FIRST ROW: Nadine Palmer, Jerry Peckham. SECOND ROW: Shirley Penn, Dorothy Pennington, Phyllis Pennington, Joann Piercy, Patricia Quinn. THIRD ROW: Glen Roberts, Rita Roberts, Norma Ruben, Loretta Ryan, Dannie Schafer, Deryl Schaffer, Ronald Schooling, Edward Scott. FOURTH ROW: Judy Searcy, Joyce Selby, Bill Shuler, Jerry Sickels, Kay Stalder, Janet Stillinger, Edith Sturdevant, Donna Stuvick. FIFTH ROW: Richard Templeton, Gary Thompson, Harold Thompson, Robert Thompson, Cheri Tindall, Roberta Townsend, Tei Turner, Linda Vernon. SIXTH ROW: Tom Walford, Glea Warnock, Lee West, Jackie Westlake, Jerry Westlake, Mary Lou Wycoff, Dale Wynn, Ronnie Young.

Sophomores



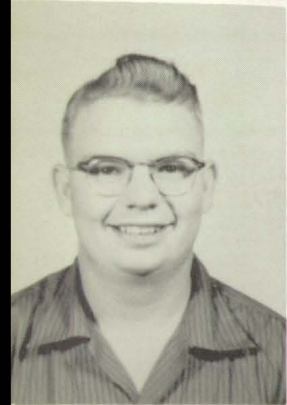
KATHY CAMPBELL
Secretary



JEAN TALTY
President



CAROLYN THOMAS
Treasurer



ARTHUR SICKELS
Vice-President



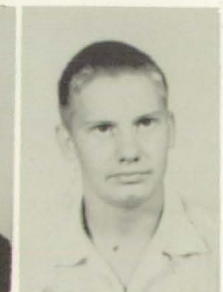
DUANE LUNDGREN
Sponsor



AGNES ROLAND
Sponsor



TERRY WRIGHT
Student Council



FIRST ROW: Sharon Amdor, Beverly Bailiff, Betty Baker, Jane Biggar. SECOND ROW: Denny Bissell, Judith Bixler, Janeice Bowman, Raymond Bressler, Charlotte Brown, Gerald Brown.



Myrna Calkins
Kathy Campbell
Jack Campbell
Violet Campbell
Sally Carmichael
Janice Carothers



Anita Cloyd
Sharon Cooper
Bernard Coulthard
Vernon Coulthard
Marcia Devore



Joan Dodge
Ralph Dillinger
Karen Dotson
Beverly Drew



Jane Drottz
Marjory Duncan
David Dunlavy
Helen Gebbie



Jeannie Evans
Joan Freshour
Richard Gillet
Richard Givan



Carl Gebbie
Clifford Greenfield
Janice Hadley
Marilyn Hansen



Carolyn Hill
Delores Holker
Charles Jacobs
Vanice Jensen



Karen Kembery
Richard Kennedy
Evelyn Kingery
Francis Kingery
Betty Kinne
Mary Larson



Robert Law
Evelyn Lawrence
Dale Lenz
Mike Leonard
Lois Limbaugh
Lois Mosier



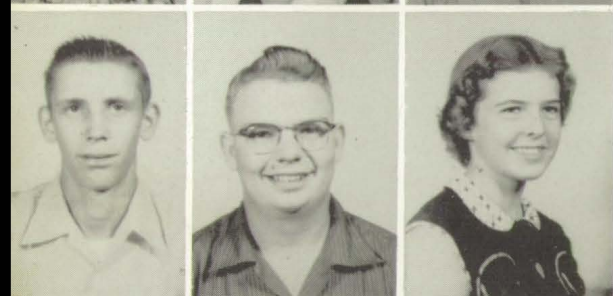
Richard Nelson
Carol Odell
Dorothy Perrin
Carolyn Posten
Leo Preston



Evelyn Rex
Sam Richey
Larry Roberts
Joleen Rubin



Stephen Schafroth
Arthur Sickels
Dixie Sickler
Dale Stuvick



Norma Snyder
Connie Steele
Ronnie Symonds
Jean Talty



Sandra Steuckradt
Carolyn Thomas
Dan Thomas
William Thomas



Darwin Thompson
Patty Thompson
Sherry Updike
Carol Vogel



Dorothy Walton
Monica Waters
Jack Westlake
Connie Wild
Terry Wright
Lois Yearington



Mary Alice Bauer



Irene Bergman



Patsy Bissell



Sarah Bixler



Lyle Boham



Joyce Brace



Ronald Brazeal



Sherryl Brenton



Gladis Bruce



Delmar Chafa



Dick Chase



Shirley Curtis



Fred Crisp



Larry Damewood



Miss Marshall



BACK ROW, Left to Right: Reporter - Donna Loghry, Secretary and Treasurer - Cheryl Symonds, Sentinel - Harold Wilmarth, President - Robert Mitchell, Vice-President - Larry Castillo, Sentinel - Larry Timmerman.

F
r
e
s
h
m
e
n



Vernon Dicks



ReNae Evans



Merlin Dixon



Jim Fry



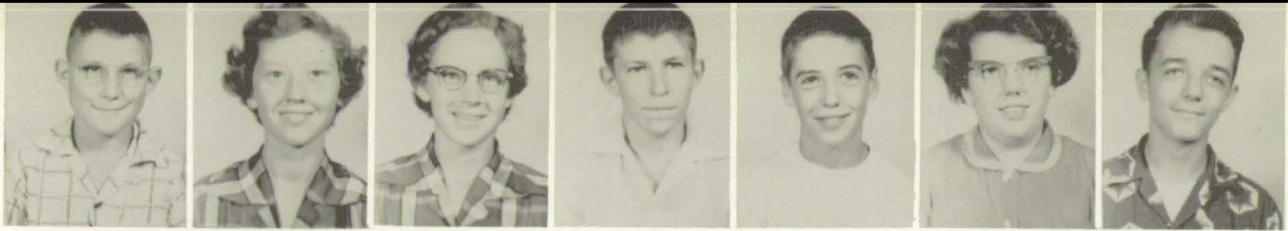
Frances Fudge



Karen Goldsmith



Russell Goldsmith



LEFT to RIGHT: Bill Harlow, Carolyn Harvey, Kathlyn Harvey, Arvid Hiley, Larry Hatton, Mary Claire Hogan, Dick Houck. Donna Lee Jensen, Forrest Johnson.



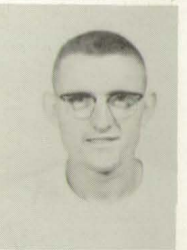
Charles Jones



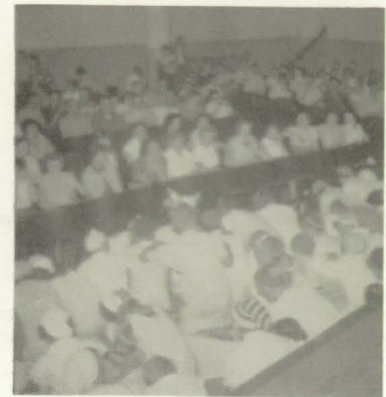
Mary Lou Kingery



Janice Kerkman



John Keith



FIRST ROW: A freshy can do anything, he "can", he "can". Today's slave tomorrow's genius.
 SECOND ROW: Dig those crazy stuck-up feathers! They need a "spoon"--silver, of course!



Bonnie Knerr



Norma Long



Ronald Lynam



Janet McGaffin



Merlyn McIntire



Sally McMullen



Margery Maas



Aneita Miller



Larry Miller



LEFT to RIGHT: Linda Pennington, Marjean Posten, Rita Preston, Sherry Kay Quinn, Betty Reed, Wauneta Reed, Robert Resh, Darryl Rhodes, Lila Roberts.



Sharol Rorabaugh



Bob Ruben



Francis Ryan



Jerry Sackett



FIRST ROW: Is there a razor in the crowd? Spotlight on Freshmen. SECOND ROW: Pie Face! Mama's got a lap full. THIRD ROW: Ice Breaker. Roll that crazy nut.

Larry Smith



Helen Spring



Carol Templeton



Max Warnock



Bernard Weeks



Jack Weeks



Lowell Westlake



Gary Williams



Diane Wilmarth

This Old House

MOST BEAUTIFUL GIRL

Marjean Posten
Jane Biggar
Rita Roberts
Helen Holbrook

MOST HANDSOME BOY

Jerry Sackett
Dale Lenz
Dick Hatton
Bob Thomas

BEST PLAYER

Football
"Sweetwater" Williams
Ray Bressler
Ted Turner
Ray Roberts

MOST LIKELY TO SUCCEED

Girl

Patty Bissell
Kathy Campbell
Edith Long
Alice Rae Thomas

Boy

Bob Mitchell
Terry Wright
John Cooney
Jack Harvey

MOST GRAY MATTER

Charlie Jones
Jean Talty
Marie Westlake
Don Bauman

BEST SPORT

Larry Timmerman
Pedro Schafroth
Glen Farris
Jim Curtis

BEST PLAYER

Basketball
Larry Castillo
Dauber Thompson
Harold Thompson
Harley Rogers

BEST WRESTLER

Bernie Weeks
Charles Jacobs
Dick Templeton
John Lovelyce

FASTEST RUNNER

Jack Weeks
Ronnie Symonds
Lee West
George Rogers

NEATEST PERSON

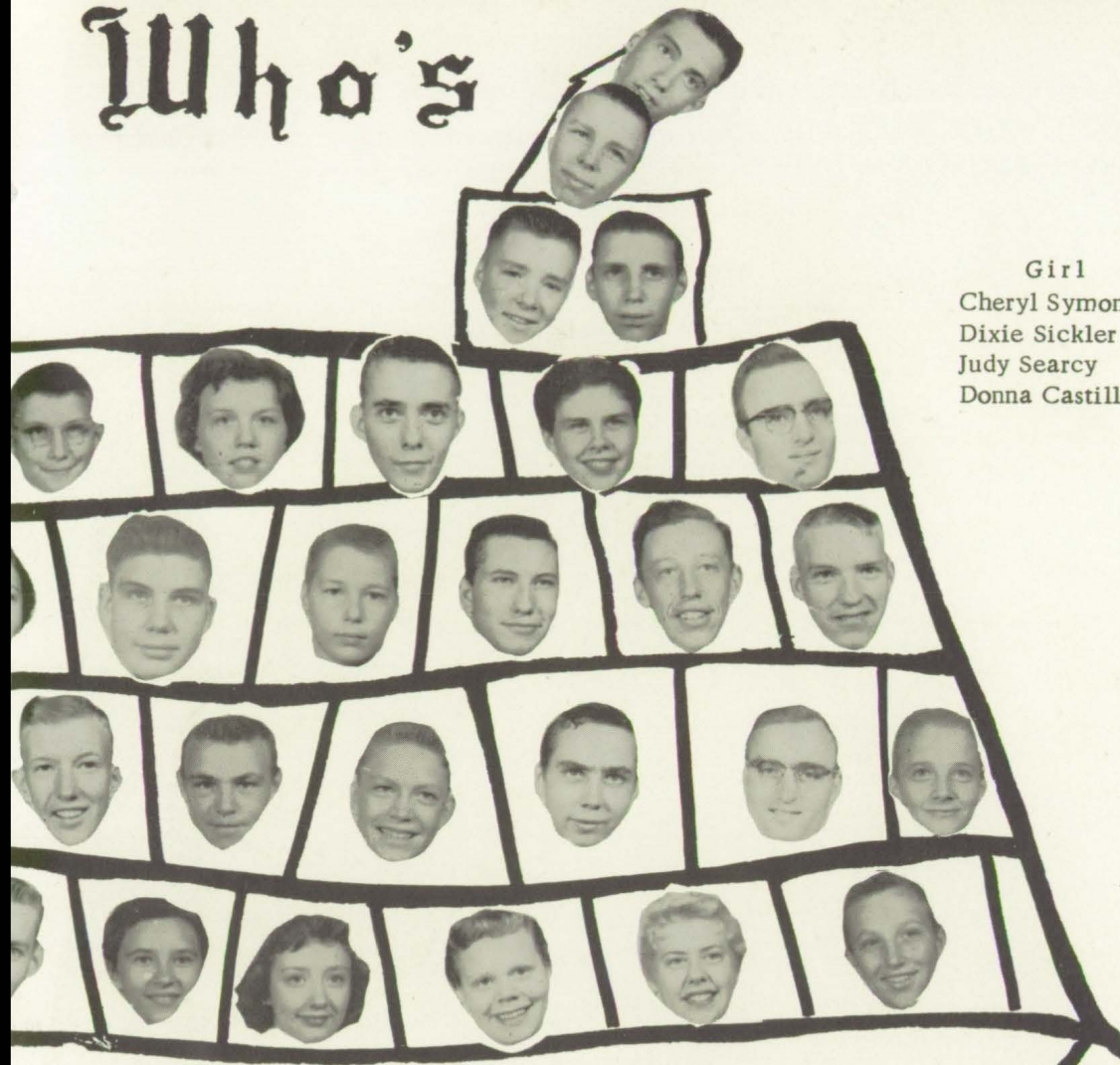
Janice Kerkman
Carol Vogel
Cheri Tindall
Leta Chafa

Fred Crisp
Bud Thomas
Larry Haggerty
Gary Norcross



Who's

Who



Girl
 Cheryl Symonds
 Dixie Sickler
 Judy Searcy
 Donna Castillo

FRIENDLIEST

Boy
 Delmar Chafa
 Gerald Brown
 Don Vogel
 "Skip" Cloyd

FANCIEST DUDS - Clothes

Girl
 Diane Wilmarth
 Monica Waters
 Linda Vernon
 Donna Rhodes

Boy
 Jim Fry
 Richard Nelson
 Bill Shuler
 Doug Sicker

BEST VOLLEYBALL PLAYER

Shirley Curtis
 Joleen Reuben
 Bill Gibson
 Marilyn Nelson

BEST CHECKERS PLAYER

Bill Harlow
 Vanice Jenson
 Tom Walford
 Anita Cullen

BEST PING PONG PLAYER

Linda Pennington
 Dale Stuvick
 Gary Thompson
 Merle Jordening



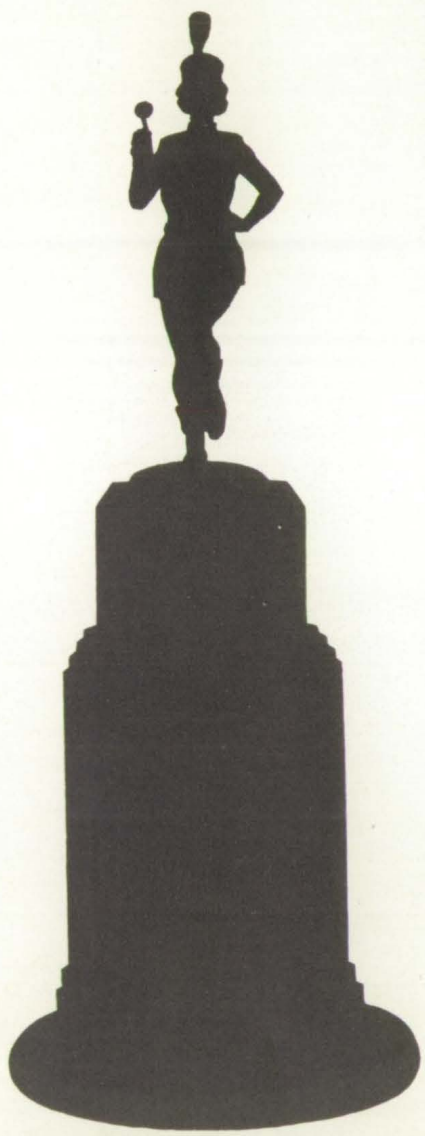
M

U

S

i

C



Mixed Chorus



FIRST ROW, Left to Right: Kathy Campbell, Donna Rhodes, Charlotte Brown, Sonja Bennett, Joyce Jordening, Marilyn Mercier, Marilyn Nelson, Alice Rae Thomas. SECOND ROW: Connie Wild, Leta Chafa, Patsy Boswell, Judy Searcy, Lois Limbaugh, Sherry Updike, Beverly Gaskill, Norma Ruben, Sharon Amdor, Joleen Rubin. THIRD ROW: Patty Bissell, Cheri Tindall, Anita Cloyd, Donna Stuvick, Lee West, Donald Harrison, Norman Naven, Karen Dotson, Kay Houck, Linnea Johnson, Carolyn Thomas, Donna Castillo. FOURTH ROW: Jane Moore, Janeice Bowman, Jane Bigger, Mary Larson, Glea Warnock, June Narigon, Gary Thompson, David Dunlavy, John Gebbie, Bud Thomas, Merle Jordening, Jack Harvey, Velma Jacobs, Carol Vogel, Mary Arbuckle.



Girls Trio

Donna Rhodes, Linda Vernon, Mary Arbuckle.



Director

MRS. SHEILA THOMPSON

Girls Glee I and II



FIRST ROW, Left to Right: K. Campbell, D. Rhodes, C. Brown, S. Bennett, C. Wild, C. Hall, J. Jordening, M. Nelson, A. Thomas. SECONDRROW: S. Haley, L. Chafa, P. Boswell, J. Searcy, C. Tindall, L. Limbaugh, S. Updike, N. Ruben, J. Rubin, S. Amdor. THIRD ROW: E. Kingery, J. Kirpatrick, J. Bowman, A. Cloyd, J. Biggar, J. Stice, P. Gentle, M. Arbuckle, K. Houck, L. Johnson, B. Gaskill, D. Castillo. FOURTH ROW: V. Stice, J. Moore, M. Larson, G. Warnock, J. Narigon, V. Jacobs, L. Vernon, K. Dotson, M. Mercier, C. Thomas, C. Vogel.



FIRST ROW, Left to Right: L. Roberts, B. Kinne, S. Carmichael, M. Waters, M. Calkins, S. Bixler, D. Jensen, J. Kerkman, K. Goldsmith. SECONDRROW: V. Jensen, S. Quinn, R. Evans, R. Nelson, N. Palmer, S. Steuckradt, M. Posten, S. Curtis, Mrs. Thompson. THIRD ROW: J. Hadley, J. Dodge, S. Brenton, M. Kingery, S. Cooper, P. Curtis.



June Narigon



David Dunlavy

Mixed Quartet



Jane Moore



Karen Dotson



Karen Dotson



Kathy Campbell

Girls Quartet



Beverly Gas Kill



Gary Thompson



Soloists gathered around the new piano. Kathy Campbell, Donna Rea Rhodes, Jane Moore, Alice Rae Thomas, and Mrs. Thompson, teacher.

KATHY CAMPBELL

LINDA CAMPBELL



VELMA JACOBS

ALICE RAE THOMAS



SEXTET: Donna Rea Rhodes, Alice Rae Thomas, Beverly Gaskill, Jane Moore, Mary Jane Arbuckle, Velma Jacobs.





Concert Band

MR. REYNOLDS



FIRST ROW: V. Jacobs, K. Houck, M. Kingery, M. Arbuckle, M. Larson, J. Talty, D. Wilmarth, D. McElroy, J. Zimmerman, L. Vernon. SECOND ROW: J. Narigon, C. Odell, L. Pennington, M. Bauer, S. Rorabaugh, J. McGaffin, J. Searcy, J. Moore, E. Kingery, C. Wild, L. Turner, M. DeVore. THIRD ROW: J. Piercy, K. Kembery, E. Turner, J. Freshour, D. Holker, G. Thompson, L. Limbaugh, J. Cox, D. Sickler, D. Castillo, B. Russell, R. Young, C. Greenfield, A. Cullen, J. Bixler, S. Hoskinson, K. Dotson. FOURTH ROW: S. Updike, B. Gaskill, D. Harrison, D. Rhodes, N. Ruben, C. Dewess, P. Bauer, J. Dotson, M. Dixon, E. King, D. Dunlavy, K. Campbell, Mr. Robert Reynolds.

Ensembles



ALL STATE ORCHESTRA AND BAND MEMBERS



BRASS QUINTET



SAXOPHONE SEXTET



WOODWIND QUINTET

FLUTE QUARTET



MIXED CLARINET QUARTET

DRUMS



Marching Band



Oh, that man from Mars!



DIXIE SICKLER



DIANE WILMARTH



CONNIE WILD



DONNA CASTILLO



DELORIS HOLKER



MARCIA DEVORE



TWIRLERS, Left to Right: Deloris Holker, Connie Wild, Donna Castillo, Dixie Sickler, Diane Wilmarth, Marcia Devore.

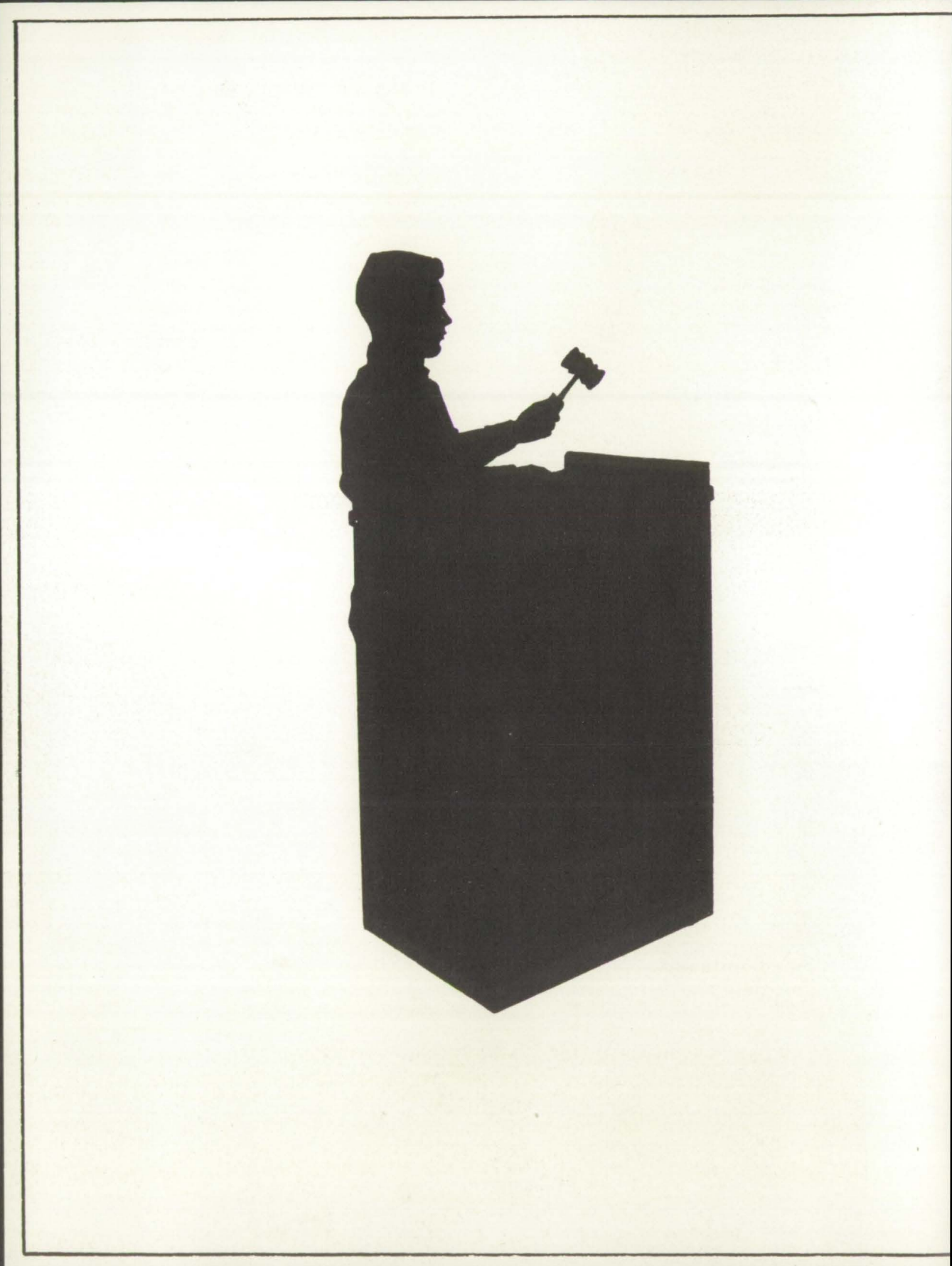


CORNING'S CRESTON FESTIVAL QUEEN
Candidate: Carol Vogel



DRUM MAJOR: David Dunlavy

Orator
Minister
Jiorn



Annual Staff

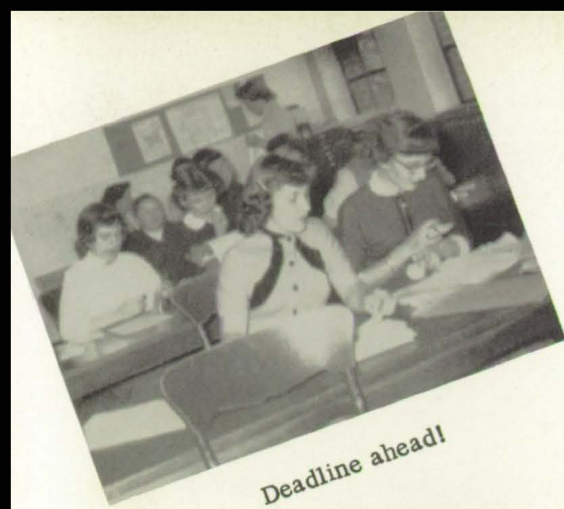
STAFF

Alice Rae Thomas..... Editor
 Janice Ritnour..... Assistant Editor
 Douglas Sickler..... Business Manager

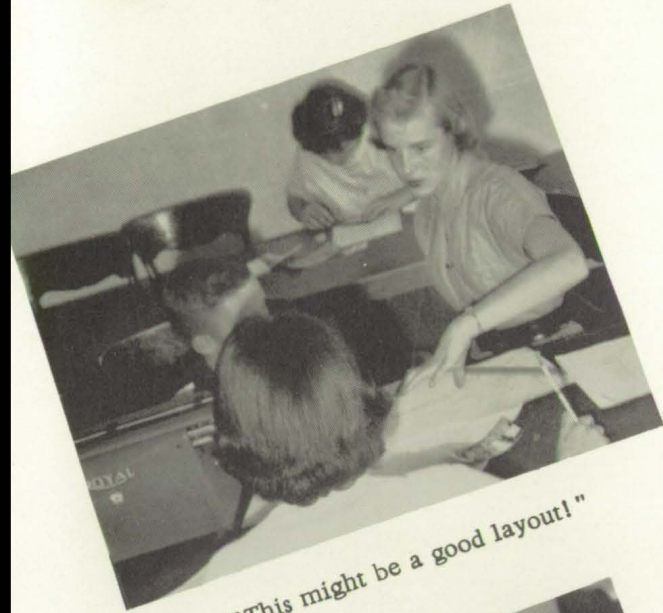
Marilyn Nelson
 Linnea Johnson
 Edith Long
 Ralph Neill
 Ed Scott

Marjorie Briggs
 Joyce Jordening
 Marilyn Mercier
 Pat Quinn
 Cheri Tindall

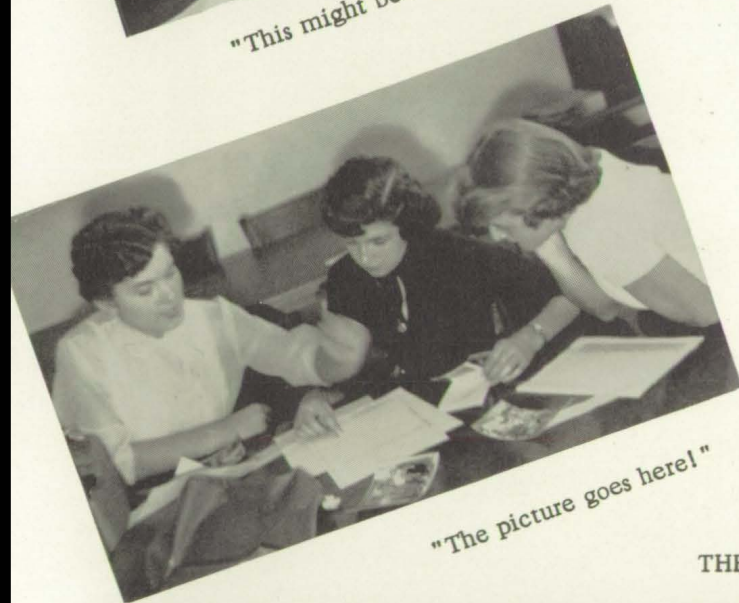
Glea Warnock



Deadline ahead!



"This might be a good layout!"



"The picture goes here!"



SENIOR STAFF MEMBERS

LEFT TO RIGHT: Marilyn Nelson, Marjorie Briggs, Doug Sickler, Janice Ritnour and Alice Rae Thomas.

THE ENTIRE STAFF



The Smoke Signal

VOL VI

October 8, 1954

No. 1

THE SMOKE SIGNAL



EDITOR
Anita Cullen

Editor ----- Anita Cullen
Feature Editors ----- Donna Rhodes, Donna Castillo
School News Editor ----- Janice Ritnour
Sports Editor ----- Doug Sickler
Business Manager ----- Phil Lawrence
Circulation Manager ----- Connie Hall
Assistants ----- David Schafroth, Phyllis Gentle
Reporters ----- Peggy Resh, Helen Jacobs,
Marjorie Briggs, Barbara Boelling
Faculty Advisor ----- Miss Lorene Marshall



SPONSOR
Miss Marshall

The Smoke Signal staff consisted of 13 high school seniors. The purpose of this staff is to get each and every school paper out on time, every two weeks. The biggest project of the paper staff this year was to redecorate the Recreation Center.



THIRD ROW: Douglas Sickler, David Schafroth, Phil Lawrence, Janice Ritnour.
SECOND ROW: Donna Castillo, Marjorie Briggs, Anita Cullen, Donna Rhodes, Barbara Boelling.
FIRST ROW: Connie Hall, Helen Jacobs, Miss Marshall -Sponsor, Phyllis Gentle, Peggy Resh.

Our World of Books

The Library consists of 4375 books, 1575 of which are in class rooms.



PAT SLATER
Fourth-year
Librarian

FRONT ROW, Left to Right: Sally Carmichael.
BACK ROW: Mary Hogan, Beverly Drew, Donna
Loghry, Sharon Bennington, Lois McGregor, Edith
Long, Marie Westlake, Charlie Jones, Norma Long.



ARVID HILEY
Helper

Under the capable guidance of Miss Hazel Green the C. H. S. library was remodeled during the summer and now serves the students with even better references and reading material, combined with beauty and comfort.



Reading Room



MISS
GREEN
Librarian

Reference Room

Office Staff



Joyce Kirpatrick



Denny Bissell



Rita Roberts

Helen Holbrook



Carolyn Hill

Carol Vogel

Monica Waters



CENTRAL OFFICE STAFF

Working one hour a day, these girls not only gain valuable experience in office practice, but actually are necessary to your school to help provide a smooth-running, efficient program. "Lots of work and lots of fun" go with this task.

Guidance

Dorothy Pennington, Donna Schaffer, Conie Preston, Leta Chafa, Guidance Director, Duane Lundgren.



DUANE LUNDGREN
Director

E ~ Club

SECOND ROW: Harley Rogers, Robert Thomas, George Rogers, Phil Lawrence, Douglas Sickler, Sponsor, Howard Larimer. FIRST ROW: David Schafroth, Ted Turner, Jim Curtis, Raymond Bressler, Sponsor, Robert Krall.



Sr. Hi-Y



THIRD ROW: Francis Tranbarger, Bob Hansen, John Cooney, Chuck Griffith, Larry Lenz, Gary Thompson, Guy Brace. SECOND ROW: Dick Stanley, Ray Roberts, Charles Cloyd, Jon Dotson, Ron Young, Ted Turner, Doug Sickler. FIRST ROW: Sponsor, Duane Lundgren, David Schafroth, Phil Lawrence, Don Harrison, Charles Dewees, Bill Gibson, Glenn Farris, Denny Edwards.



LEFT TO RIGHT: Mr. Lundgren, Sponsor; Doug Sickler, President; Ted Turner, Vice-President; Jon Dotson, Secretary; Glenn Farris, Treasurer. NOT SHOWN: Bill Gibson, Chaplain.

Officers



Tr. Hi-Y



THIRD ROW: Lyle Boham*, William Thomas*, David Dunlavy*, Charles Jones*, Denny Bissell. SECOND ROW: Bob Ruben, Richard Givan*, Terry Wright*, John Keith*, Forrest Johnson, Dick Houck, Merlin Dixon*. FIRST ROW: Ronnie Brazeal*, Larry Castillo*, Arvid Hiley, Dale Stuvick*, Sam Richey*, Vernon Dicks*, Gary Williams, Darryl Rhodes, Delmar Chafa*.
 *Indicates inducted members.



LEFT TO RIGHT: Mr. Hoover, Sponsor; William Thomas, President; Charles Jones, Vice-President; David Dunlavy, Secretary; Jim Fry; and Denny Bissell.
 NOT SHOWN: Richard Givan, Treasurer.

Officers



F . F . A .

LEFT TO RIGHT, FOURTH ROW: Norman Firkins, Robert Thomas, Leo Preston, Jim Hatton, Fred James, Daryl Calkins, Merle Jordening, Donald Bauman, Paul Bauer, George Rogers, Jon Lovely, Boyd Russell, Richard Nelson, Fred Crisp, Charles Jacobs, Roger Murdock. THIRD ROW: Larry Johannes, Bob Thompson, Deryl Schaffer, Don Vogel, Art Sickels, Jerry Russell, Dannie Schafer, Richard Kennedy, Jerry Sackett, Lee West, Larry Miller, Norman Naven, Glen Johnson, Keith Groff, Bill Shuler, Jerry Sickels. SECOND ROW: Sponsor, Mr. Whipple, Ronald Schooling, Glen Roberts, Robert Nelson, Gerald Brown, Larry Roberts, Dean Davis, Richard Gillet, Robert Resh, Dan Thomas, Max Warnock, Ralph Dillinger, Harold Wilmarth, Larry Hatton, Francis Ryan, Larry Timmerman, Larry Smith, Russell Goldsmith, Bob Mitchell. FIRST ROW: Jim Curtis, Jerry Peckham, Ralph Neill, Jack Harvey, Gary Norcross, Harley Rogers.



LEFT TO RIGHT: Treasurer, Jim Curtis; Sentinel, Harley Rogers; Vice-President, Jerry Peckham; President, Ralph Neill; Reporter, Gary Norcross; Secretary, Jack Harvey.

O F F I C E R S



MR. WHIPPLE
Sponsor



Executive meeting



Jack, Norm, and Don - three heads are better than one.



Be careful, Jon!



Harley's tools of industry



Gary and Boyd, only the beginning



Jim, Jerry and Fred's Toothpick Factory, Inc.



Gillet's Pride



Paul, thinking of the day when....



Gerald's Pen of Three



Glenn's prize Guernsey



Larry's first Love



Harold looks into the future



Pork is Norman's sport

F. H. A.



BACK ROW: Patty Bissell; Loretta Ryan; Sherry Quinn; Sharon Cooper; Marie Badgett; Sponsor, Shirley Gardner; Eleanor Kingery; Mary Clare Hogan; Gladys Bruce; Judy Bixler, FRONT ROW: Pat Quinn; Marjory Duncan; Sonja Bennett; Evelyn Rex; Marilyn Kingery; Marilyn Mercier.

Under the guidance of Miss Shirley Gardner the fifteen members of the F. H. A. have had a busy year. The officers for the year were:

PRESIDENT
Sonja Bennett

VICE-PRESIDENT
Evelyn Rex

SECRETARY - TREASURER
Marjory Duncan



F. H. A. SPONSOR
Shirley Gardner



Mrs. Carl West explains to the F. H. A. group how to wrap packages attractively and neatly.

G. A. A.



FOURTH ROW: Janice Ritnour, Conie Preston, Pat Gebbie, Elnora Selby, Dorothy Pennington, Ruby Cooper, Joann Piercy, Anna Harlow, Donna Schaffer, Rita Preston, Helen Holbrook. THIRD ROW: Donna Castillo, Pauline Wilmarth, Wauneta Reed, Sally McMullen, Violet Campbell, Vivian Stice, Barbara Boelling, Jean Stice, Phyllis Gentle, Marilyn Nelson. SECOND ROW: Ruby Nelson, Joyce Kirkpatrick, Anita Cloyd, Dorothy Walton, Joyce Brace, Edith Sturdevant, Nadine Palmer, Eleanor King. FIRST ROW: Betty Reed, Aneita Miller, Pat Thompson, Lois Mosier, Connie Hall, Monica Waters, Bonnie Knerr, Almira Turner.

Officers



SECOND ROW: Sponsor, Almira Turner; Hiking, Nadine Palmer; Volleyball, Marilyn Nelson; Basketball, Pauline Wilmarth; Badminton, Aneita Miller; Softball, Lois Mosier. FIRST ROW: Secretary, Ruby Nelson; Point Keeper, Donna Castillo; President, Helen Holbrook; Treasurer, Pat Gebbie; Vice-President, Anita Cloyd.



LEFT TO RIGHT: Miss Kazebeer, Sponsor; Program Chairman, Edith Long; Publicity Chairman, Connie Wild; Vice-President, Carol Odell; Treasurer, Alice Thomas; Music Chairman, Mary Jane Arbuckle; Secretary, Cheri Kay Tindall; Worship Chairman, Pat Curtis; President, Leta Chafa; Service Chairman, Janet Stillinger; Social Chairman, Joleen Rubin; Mrs. Roland, Sponsor.



Christmas in Our Hearts!

Y

W

T



You Were There!



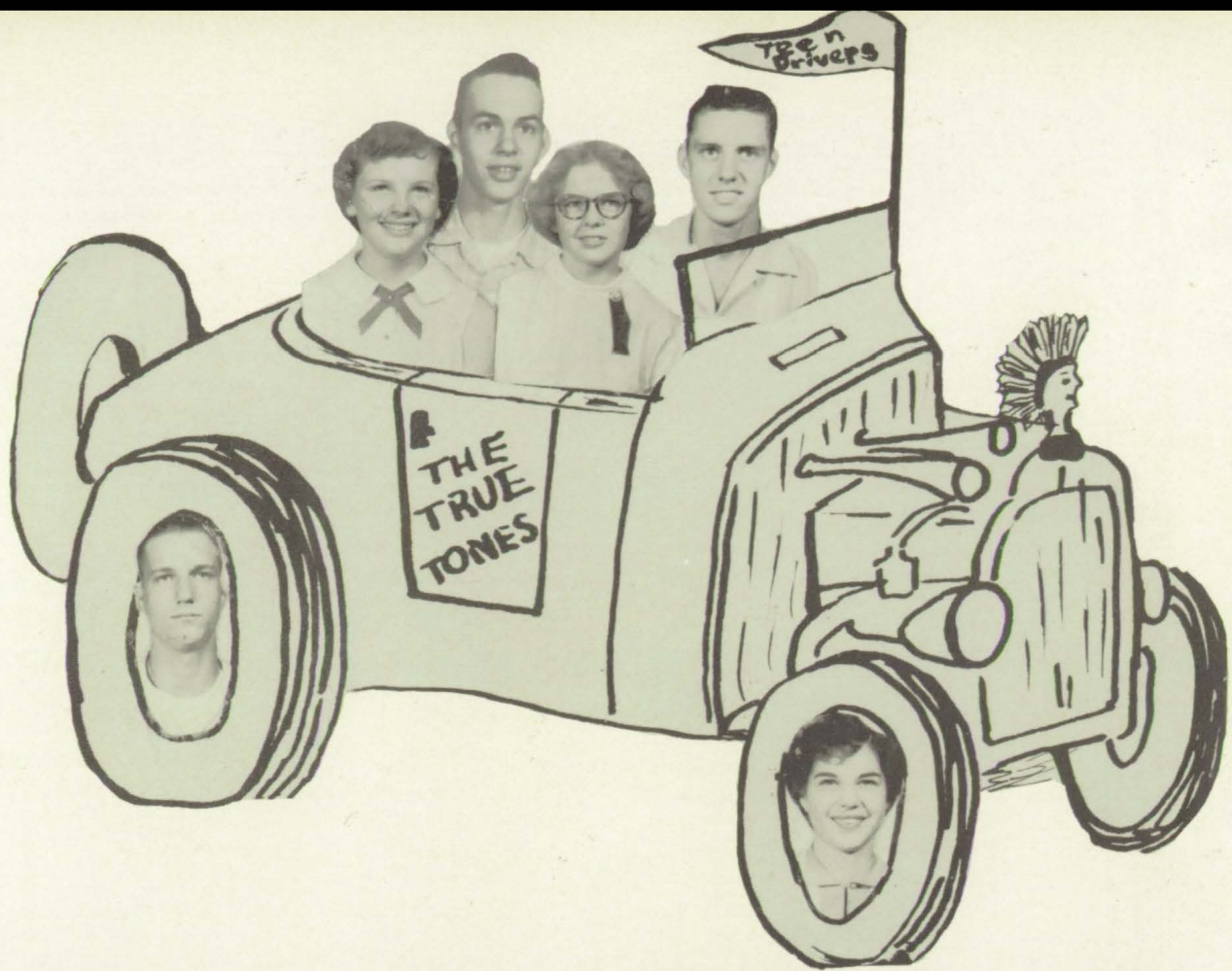
Y-Teen Cabinet
A Meeting in the Making.



SIXTH ROW: Miss Kazebeer, Evelyn Lawrence, Lois Johannes, Janet Stillinger, Helen Gebbie, Velma Jacobs, Norma Long. FIFTH ROW: Sherryl Brenton, Myrna Calkins, Donna Stuvick, Karen Kembery, Linda Vernon, Karen Dotson, Mary Arbuckle, Cheryl Symonds. FOURTH ROW: Glea Warnock, Sherry Updike, Lois Limbaugh, Kay Stalder, June Narigon, Donna Rhodes, Linda Pennington, Marjorie Briggs. THIRD ROW: Mary Bauer, Donna Jensen, Sharon Amdor, Karen Goldsmith, Marjean Posten, Sharon Bennington, Janice Carothers. SECOND ROW: Mary Kingery, Diane Wilmarth, Sharol Rorabaugh, Rita Roberts, Carolyn Posten, Kathy Campbell, Lois McGregor, Marilyn Hansen. FIRST ROW: Irene Bergman, Frances Fudge, Patsy Boswell, Dixie Sickler, Alice Rae Thomas, Marcia Devore, Linnea Johnson, Delores Holker, Janice Kerkman.



SIXTH ROW: Janet McGaffin, Carol Odell, Janeice Bowman, Dorothy Perrin, Patsy Curtis, Joyce Jordening, Mrs. Roland. FIFTH ROW: Joan Dodge, Carol Vogel, Jeanie Evans, Beverly Drew, Joleen Rubin, Cheri Tindall. FOURTH ROW: Sandra Steuckradt, Sarah Bixler, Kay Houck, Charlotte Brown, Shirley Curtis, Edith Long. THIRD ROW: Vanice Jensen, Helen Spring, Roberta Townsend, Shirley Penn, Lois Yearington, Carolyn Harvey, Carolyn Thomas. SECOND ROW: Judy Searcy, ReNae Evans, Janice Hadley, Ella Mae Johannes, Marie Westlake, Norma Ruben, Connie Steele, Carolyn Hill, Kathlyn Harvey, Beverly Gaskill. FIRST ROW: Donna Loghry, Dorothy Dillinger, Pat Slater, Joan Freshour, Connie Wild, Leta Chafa, Betty Kinne, Sally Carmichael, Jane Biggar.



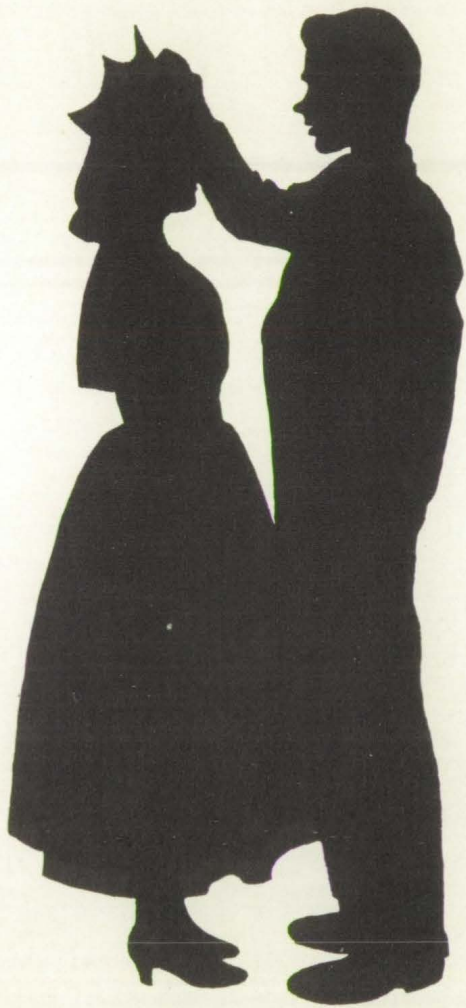
President Jerry Russell
 Vice-President Gary Norcross
 Secretary Dixie Sickler

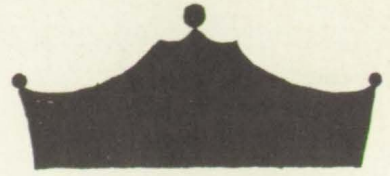
Treasurer Carol Odell
 Reporter Helen Holbrook
 Sentinel Daryl Calkins



ROW ONE, Left to Right: Rubin, Thomas, Holbrook, Sickler, Odell, Calkins, Norcross. ROW TWO: Hadley, Tindall, Johnson, Long, Steuckradt, DeVore, Hill, Chafa. ROW THREE: McGaffin, Vogel, Updike, Limbaugh, Curtis, Palmer, Mercier, Nelson. ROW FOUR: Harrison, Thompson, Davis, Dotson, Kennedy, Stuvick, Keith, Given. ROW FIVE: Dunlavy, Thomas, Russell, Neill, Dewees, Hight, Booth, Kingery, Ritnour, Thomas, Sickler, Lenz, Jordening, Curtis.

R
o
y
a
l
t
y





1954 Football Queen



Her Majesty Helen Holbrook was elected by the student body because of beauty, scholarship, personality, interest and support to the team.

QUEEN'S COURT: Freshmen - Marjean Posten, Delmar Chafa; Sophomores - Jane Biggar, Ronnie Symonds; Junior - Donnie Harrison, Rita Roberts; Queen and Escort - Helen Holbrook, Ray Roberts; Seniors - Donna Schaffer, Roger James. Mary Wheatley. Del Gene Mercier, Marie Wheatley.

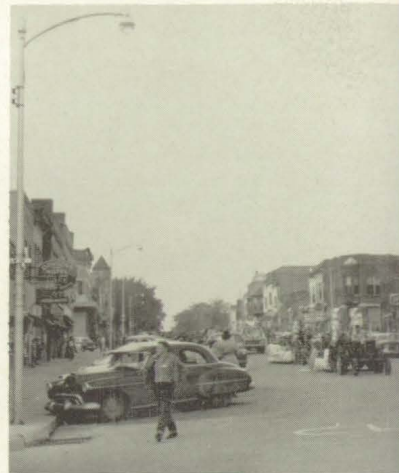




*Twas the night before home-coming, all through the town, excitement was stirring for miles around.



The school was decked out in a bright array. The Clarinda Cards were on the way.



Colorful floats see - while school with glee.



Cleaning done by G A A Makes a most efficient way.

H o m e



Rat a Tat Tat and Rum a tum tum. Everyone steps to the beat of the drum.



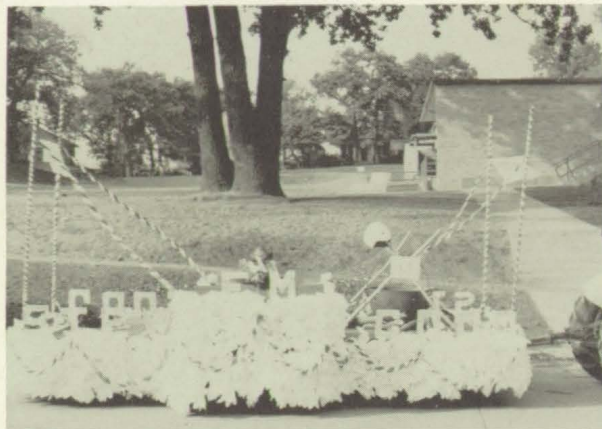
We're proud of our Principal, Mr. Ball. He led the parade, floats, and all.



Junior and FHA floats



paraded for all to
children watched



We've stewed 'em good, they're
done. The freshman float 1st
prize has won.



Second prize by Hi-Y --
proves the effectiveness of dye.

c o m i n g



The football game was wonderful
to see, 14 to 13 -- a Corning victory.



Donne Reet, and Queen Pete.
All of them look mighty sweet.



Along with a couple of "dream boats."



MISS GLEA WARNOCK
1955 RED RAIDER BEAUTY QUEEN

..... was chosen from a field of four Corning beauties by Bing Crosby, famous actor of radio, television, and screen.

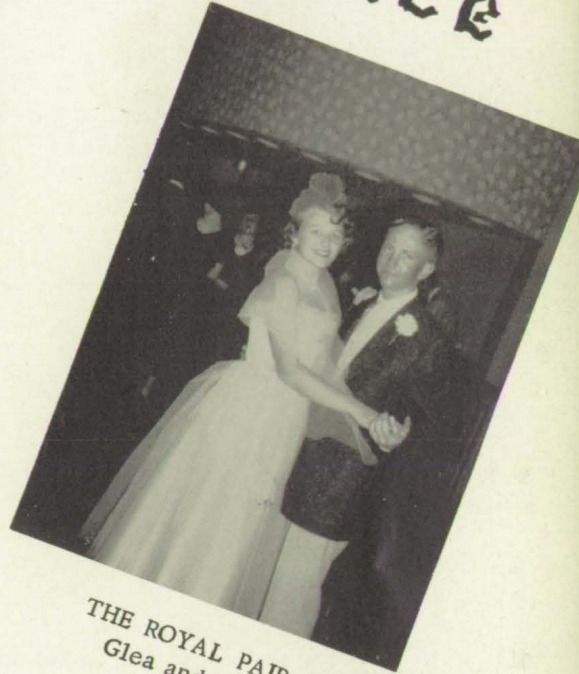
Miss Warnock reigned over the 1955 yearbook dance.

Annual



CONNIE WILD
Sophomore

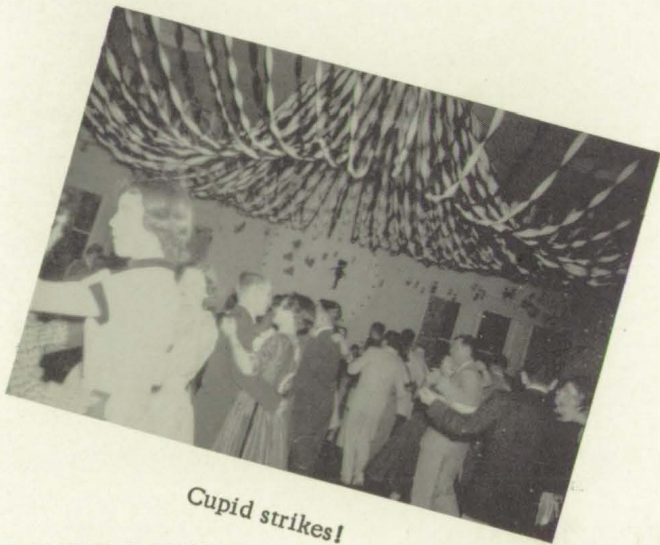
Dance



THE ROYAL PAIR
Glea and Bob



Doug crowning Glea



Cupid strikes!



Queen and her court

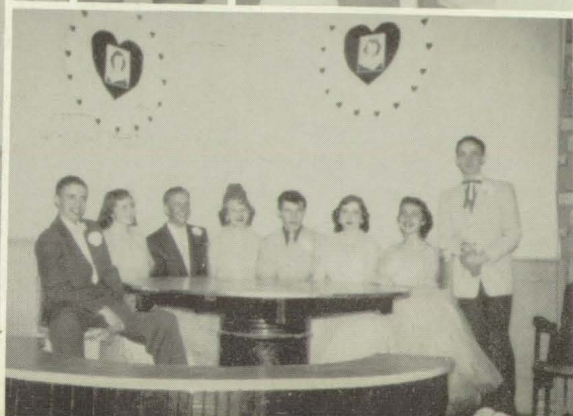
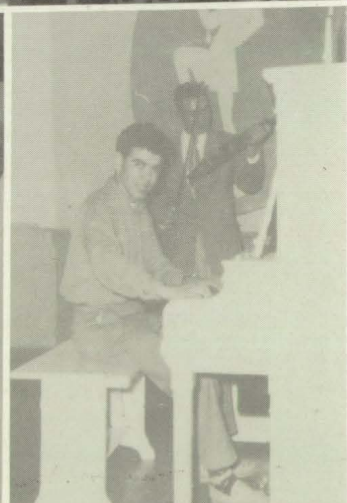
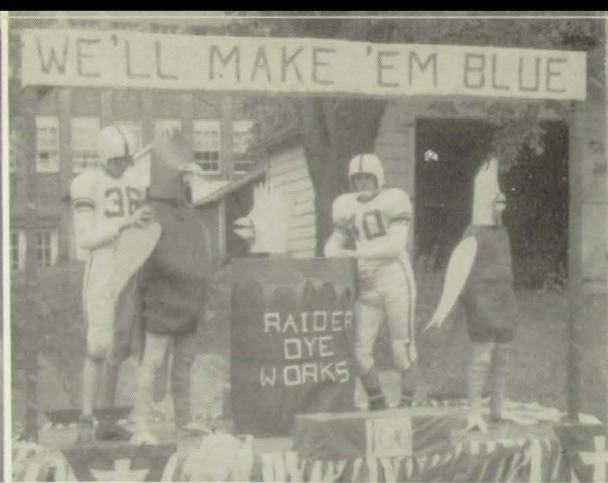
MARJORIE BRIGGS
Senior

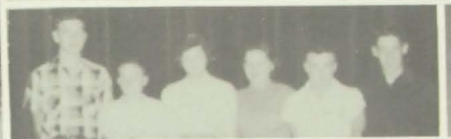
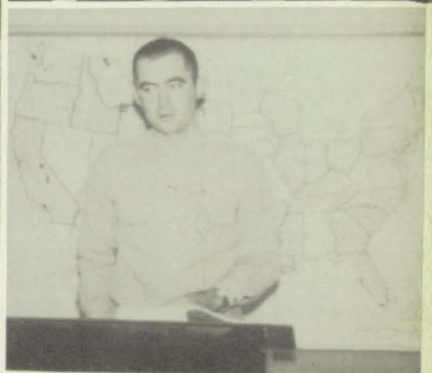
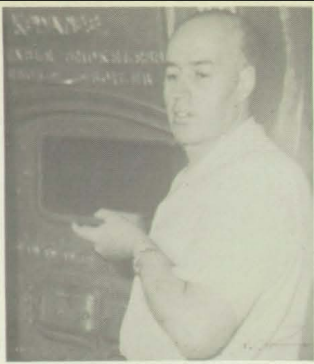
CAROLE TEMPLETON
Freshman

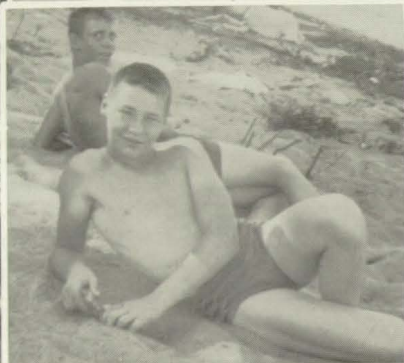
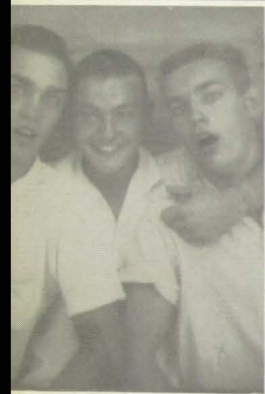


Queen's court and escorts











D
r
a
m
a



LEFT TO RIGHT: Leta Chafa; Alice Thomas, Secretary and Treasurer; Doug Sickler, Vice-President; Francis Tranbarger, President; Chuck Griffith.

Mr. Lenz, Donna Castillo, Anita Cullen, Donna Rhodes.

Homecoming Officers

NEW MEMBERS

First Semester



MR. LENZ, SPONSOR



Jane Moore



Marge Briggs



Robert Thomas



Janice Ritnour

Lagniappe



Lagniappe was organized in September 1954, under the leadership of Mr. John Lenz. Its purpose is to interest students in speech activities and provide opportunity.

President is Chuck Griffith, Vice-President is Linda Vernon, Secretary and Treasurer is Helen Holbrook, and Scribe is Leta Chafa.

ROW ONE, Left to Right: C. Griffith, Mr. Lenz, L. Vernon, L. Chafa, H. Holbrook, R. Neill, G. Thompson, A. Thomas. ROW TWO: N. Ruben, C. Wild, J. Biggar, J. Talty, K. Campbell, D. Rhodes, M. Briggs. ROW THREE: D. Castillo, A. Cullen, M. Westlake, L. Johnson, K. Houck, R. Roberts, P. Quinn. ROW FOUR: J. Jordening, C. Tindall, E. Long, C. Vogel, M. Waters, J. Moore, V. Jacobs. ROW FIVE: K. Dotson, M. Arbuckle, L. Ryan, M. Mercier, L. McGregor, M. Larson, J. McGaffin.

Senior Class Play



BACK ROW, Left to Right: Norman Naven, Robert Thomas, Anita Cullen, Helen Holbrook, Doug Sickler, Chuck Griffith, Janice Ritnour, Jack Harvey, Leta Chafa. FRONT TWO ROWS: Connie Hall, Donna Castillo, Alice Rae Thomas, Phyllis Gentle.



A scene during the play.
STANDING: Donna Castillo.
LYING: Connie Hall.

All School Play

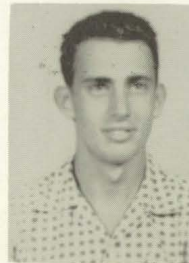


BACK ROW: Jane Moore, Mrs. O'Flaherty, Edith Long, Mrs. Whiting, David Dunlavy, Bud Smith, Jack Harvey, John Barr. SECOND ROW: Denny Bissell, Roland Whiting, Donnie Harrison, Alfred Morgan, Gary Thompson, David James, Norman Naven, Dr. Wentworth, Glen Johnson, Dutch Goss, Norma Ruben, Helen Whiting. FIRST ROW: Kathy Campbell, Janice Grayson, Monica Waters, Leslie Grayson, Marie Westlake, Mrs. Ann Morgan, Alice Rae Thomas, Mrs. Sarah Peters.

OTHER CAST MEMBERS



STAGE CREW
Dale Stuvick, Terry Wright



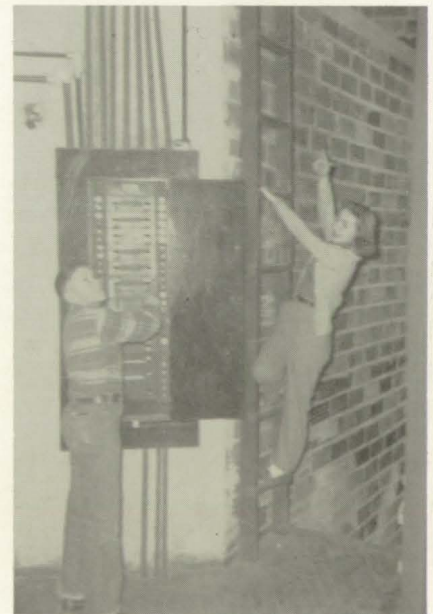
Chuck Griffith
Richard James



Beverly Gaskill
Rosalee Winters



Ralph Neill
Eric Smith



LIGHTS, Ed Scott
PROPERTY, Connie Wild



PROPS

LEFT TO RIGHT: Carolyn Thomas, Linnea Johnson, Janice Hadley and Carol Vogel.



MAKEUP

Velma Jacobs, and Monica Waters.



USHERS

LEFT TO RIGHT: Joyce Jordening, Rita Roberts, and Pat Quinn.



TICKETS

SEATED: Sharon Amdor and Helen Holbrook, distributing tickets to Jack Harvey, Glenn Johnson, Jane Moore, Cathy Campbell and Norman Naven.



PLAY SCENE

Don Harrison, Marie Westlake, Chuck Griffith.



PROMPTERS

Connie Hall, Cheri Tindall.

Speech



HOME ELIMINATION WINNERS

Kathy Campbell

Donna Castillo

Pat Quinn

HUMOROUS READING



Sherry Updike



Vanice Jensen



Connie Hall



HOME ELIMINATION WINNERS
Velma Jacobs



Leta Chafa

INTERPRETATIVE READING

Jane Moore



Alice Thomas



Contest



HOME ELIMINATION WINNERS

Connie Wild

Rita Roberts

Monica Waters

DRAMATIC SPEAKING



Carol Vogel



Joyce Jordening

WINNERS



ORATORICAL DECLAMATION
Ralph Neill



EXTEMPORANEOUS
SPEAKING
Mary Lu Larson



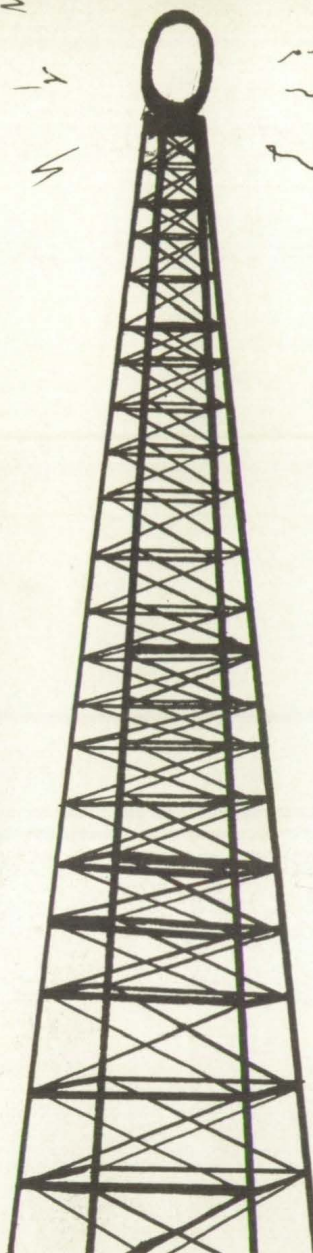
INTERPRETATIVE READING
RADIO SPEAKING
Loretta Ryan



LORETTA RYAN



BILL STANLEY



During the first semester students broadcast daily from the High School auditorium through the facilities of KSIB Creston, Iowa. Loretta Ryan served as chief announcer with the following people assisting her: Mr. Lenz, Mr. Reynolds, Phil Lawrence, Phyllis Gentle, Linda Vernon, Miss Marshall, Mr. Dunlavy, Loretta Ryan, Rita Roberts, Connie Hall, Doug Sickler.





SPORTS

HEY ALL YOU RAIDERS



FIRST STRING: Donna Castillo, Marcia Devore, Dixie Sickler, Connie Wild, Cheryl Symonds.

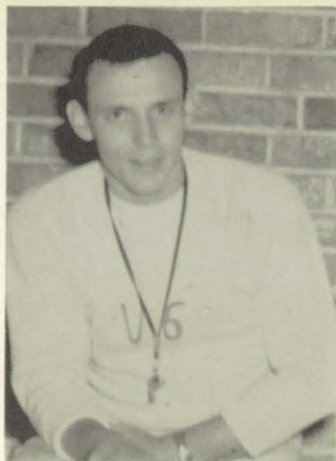


SPONSOR
Almira Turner



SECOND STRING: Diane Wilmarth, Sherry Updike, Janet MaGaffin, Linda Pennington, Kay Houck, Monica Waters.





COACH KRALL



COACH LARIMER



COACH HARRIS



COACH SMITH



HARLEY ROGERS
Guard

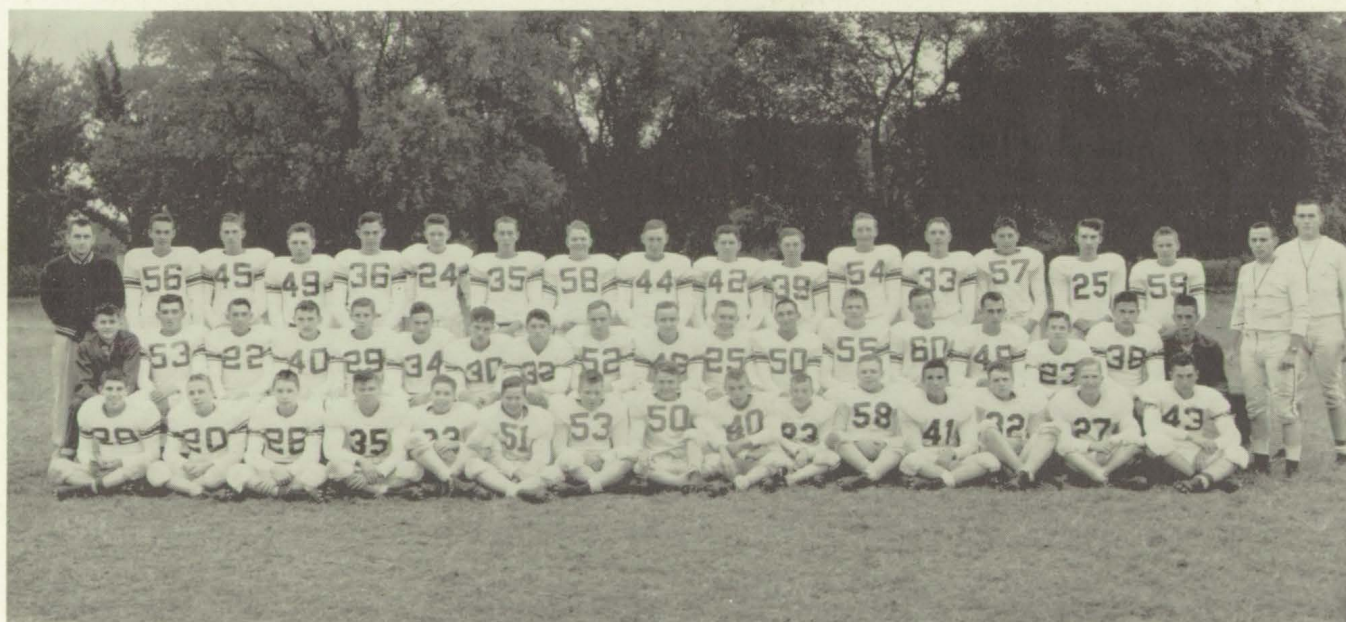


GEORGE ROGERS
End



RAY ROBERTS
Back

SELECTIONS FOR ALL-CONFERENCE TEAM



ROW ONE: David Schafroth, Glen Farris, Terry Wright, Ronald Young, Francis Ryan, Vernon Dicks, Larry Timmerman, Denny Bissell, Jack Weeks, Larry Castillo, Larry Roberts, Richard Gillet, Glen Roberts, Bob Thompson, John Cooney. ROW TWO: Jerry Peckham, Roger Murdock, Jim Curtis, John Keith, Stephen Schafroth, John Lovely, Ray Roberts, Raymond Bressler, George Rogers, Harley Rogers, Doug Sickler, Norman Naven, Ted Turner, Jack Harvey, Charles Griffith, Darwin Thompson, Bob Ruben, Tom Walford. ROW THREE: Coach Larimer, Gary Norcross, Daryl Calkins, Charles Jacobs, Jim Fry, Ron Symonds, Dick Stanley, Art Sickels, Merle Jordening, Dick Hatton, Jerry Sickels, Charles Cloyd, Norman Firkins, Richard Nelson, Jack Westlake, Gerald Brown, Coach Krall, Coach Harris.

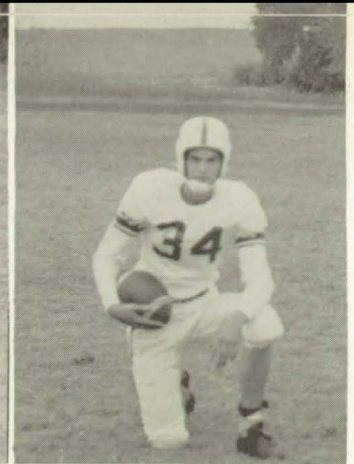
Football



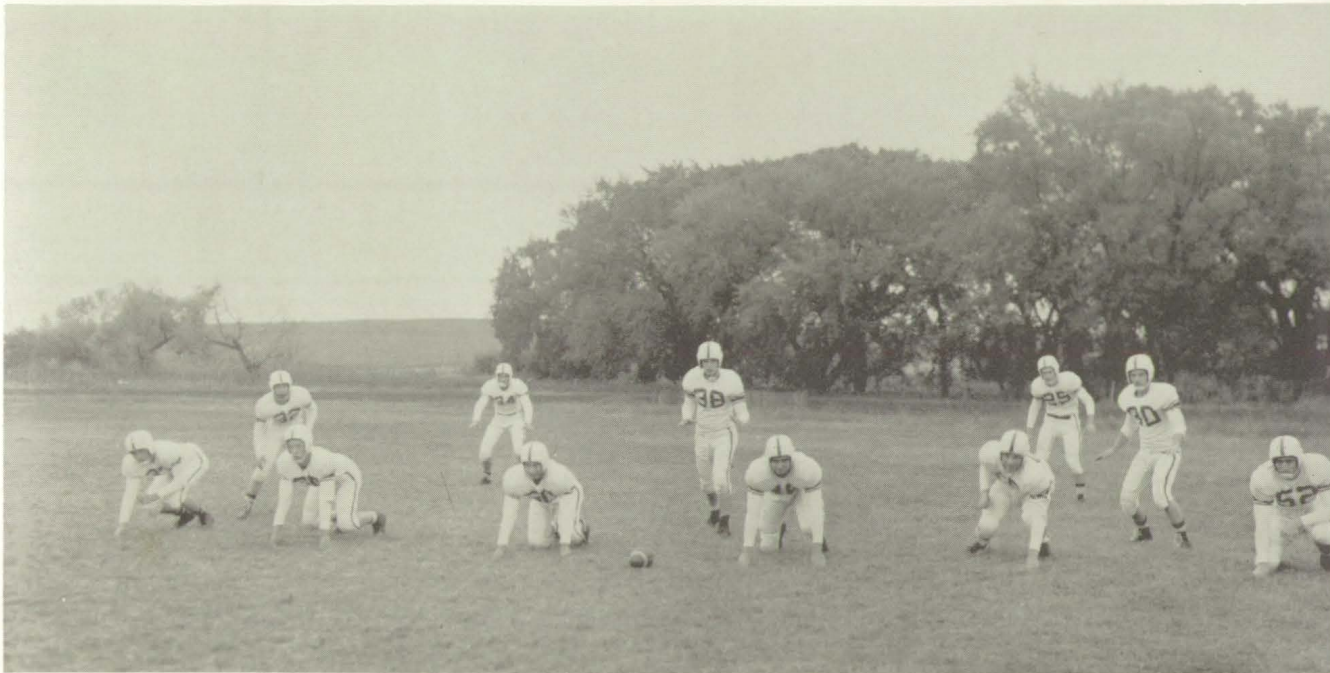
JACK HARVEY
Tackle



NORMAN NAVEN
Guard



JON LOVELY
Back



DEFENSIVE UNIT 6-3-2

FIRST ROW: N. Firkins, J. Harvey, N. Naven, G. Rogers, T. Turner, H. Rogers.
SECOND ROW: R. Bressler, B. Ruben, R. Roberts. THIRD ROW: J. Lovely, D. Sickler.



OFFENSIVE BACKFIELD

J. Keith, T. Wright, S. Schafroth, J. Curtis, D. Thompson.

Corning	13
Corning	7
Corning	0
Corning	13
Corning	40
Corning	0
Corning	0
Corning	19
Corning	7

SEASON'S



RAY BRESSLER
Center



DOUG SICKLER
Back



CHUCK GRIFFITH
End



TED TURNER
Tackle

Football



OFFENSIVE UNIT SPLIT T

FIRST ROW: C. Griffith, J. Harvey, N. Naven, R. Bressler, G. Rogers, T. Turner, H. Rogers. SECOND ROW: J. Lovely, S. Schafroth, R. Roberts, D. Sickler.

Greenfield	19
Creston	6
Red Oak	7
Clarinda	12
Villisca	0
Atlantic	7
Shenandoah	41
Bedford	0
Glenwood	0

R E C O R D



FIRST ROW: D. Schafroth, C. Cloyd, D. Stanley. SECOND ROW: C. Griffith, G. Norcross, M. Jordening, D. Calkins.



BOB RUBEN
Back

Basketball



Steven
Schafroth



Darwin
Thompson



Harold
Thompson



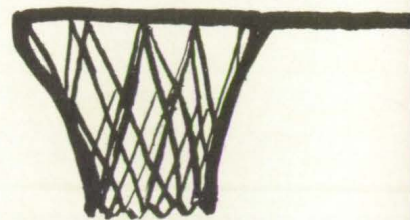
George
Rogers



Chuck
Griffith



Gary
Norcross



Jerry
Peckham



Dick
Hatton



Glen
Farris



Terry
Wright



Jim
Curtis



The Corning Red Raiders
breezed past the Villisca
Blue Jays, 64 - 40.



THE SEND-OFF



ROW ONE, Left to Right: Bill Gibson, Kenneth Booth, Fred James, Dale Lenz, Dale Wynn, John Keith, Ivan Dixon. ROW TWO: Glenn Johnson, Ted Turner, Merle Jordening, Jerry Russell, John Gebbie, Student Manager Merlin Dixon. ROW THREE: Coach Krall, Mike Leonard, Jack Weeks, Ron Symonds, Ronnie Lynam, Coach Larimer.



JOHN HARRIS
Coach

W r e s t l i n g

ROBERT THOMAS
Captain



ROW ONE, Left to Right: Dick Templeton, Ron Brazeal, Dale Stuvick, Denny Edwards, Charles Cloyd, George Rogers, Bernard Weeks. ROW TWO: Jon Lovely, Charles Jacobs, Norm Firkins, Jack Harvey, Phil Lawrence, Coach John Harris. ROW THREE: Glen Roberts, Larry Castillo, Daryl Calkins, Jack Weeks, Norman Naven, Ray Bressler. ROW FOUR: Gerald Brown, Sam Richey, Roger Murdock, Ted Turner, Vernon Coulthard, Carl Gebbie. ROW FIVE: Larry Hatton, Bob Ruben, Arvid Hiley, Bill Harlow, Vernon Dicks.

Corning Matmen Are Credited With First Victory Over Leon Team

The Corning wrestling team traveled to Leon and returned a victor. It is the first victory for Corning since the support of wrestling was given. The victory was for our captain.

The Corning team with Bern... in 4... of t... Fle... E... cl... wh... sto... nes... 0... 3:0... C... leton... after... Level... of lett... Eldon... Then C... man Fir... en 15 to 6.

This bout was followed by Bressler wrestling for injured teammate and captain, Bob Thomas. Ray, while only a sophomore, pinned Leonard Cloyd, who was injured in a match by... were... es.

The final match of the evening matched Corning's Charles Jacobs, 170, against Leon's who weighed 205. Jacobs won 3 to 0. The final score was Corning-34 and Leon-3.

Corning's reserve team started with 10 points because of forfeits and went on to win 45 to 7. Wins for Corning by pins were Larry Castillo Butch Coulthard, Jack Weeks Jerry Sickels, Glen Roberts and Daryl Calkins. Sam Richey decided his man 5 to 0 and Carl Gebbie fought to a draw.

Corning Grapple Bow to Greenfield

The Greenfield team gained another... pense of the... 10. They won... by the score... Corning's... 127 pounder... a pin at 1... Phil Lawrence... ether pin... Both boys... Greenfield's... Wayne Bo... r 10 point... e score at... Greenfield... 97-pound... d over La... en Dale St... Leander, 3 to... more, Ron Brazeal... field's captain, senior Dick Reed, secured a victory with a pin.

Edward... on... by a pin... Al... though leading by points Corning's 138-pound Norman Firkins was forced to lose by a forfeit when he was injured on a take-down. Ray was lost to Willard Main, although had two good chances. C-captain senior Charles... in the 154... at a scoreless... Dick Lilly was in a match to George... of unsport...

handicapped by... 35 lbs. over his weight... Charles Jacobs was... at 2:10 by Gordon Harris.

Scoring for Corning were Bernard... forfeit and... ing a quick... Roberts... ers, four... Sam... Leon... pinne... Gre... over... Jerr... Har... Ted... class. Rog... ioned 7 to 2 by Larry M... Final score was...

Coach's Spot to John Harris

John J. Harris replaces Lee Wachenheim as wrestling coach and assistant football coach along with teaching three American... classes and three junior... ical education classes.

Coach Harris graduated from Concord high, in... Hampshire, in 1947... to Grinnell; after fe... paration he taught... Iowa.

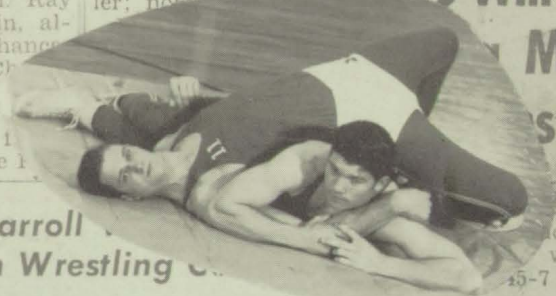
John has his own... ods for teach... hopes to prov... wrestling blin... athletic skill.

Four matc... six more are...

Corning M...

Coach Harris will officially start... He plans to have abo... pants plus at least three... Mr. Harris... onstrations... at basketbal... give the people of Corning an idea on varsity wrestling. He also hopes to im... press the fact th... and intelligence... ler; not...

Raiders Win First Match at Leon



A pair of wrest... st Thursda... er first tear... while the re... 15-7 score.

Carroll in Wrestling

The Carroll wrestling squad took... a victory fro... n by a score... e lettermen...

scored their points from... the 97-pound class to... ks. After the forfeit... n, a transfer from... Larry Nelson in two... 3 seconds of the sec...

letterman Phil Law... pinned Dick Sanders in 2... minutes and 23 seconds of the sec... and period. Corning's Charles Ja... and Carroll's Perry Knoulton... to a draw in the heavy-weight... on.

Other results were losses to Ron... Brazeal, Sam Richey... l. Norman... Firkins, Corn... lean, 15-... won hi... ris.

oned... won... vy-... 3-0

It will be the second... season between the... Corning's reserves started out with... on forfeits. Wins for th... included pins by Larr... Butch Coulthard, Jac... Jerry Sickels, Glen Robert... Harris' team was ad Daryl Calkins, Sam Riche... st Boys Town here on a decision and Carl Gebbie...



Jacobs, Rogers.



Templeton



Harvey, Firkins.



Roberts, Cloyd.



Calkins, Bressler.

Wrestlers Lose 31-8 at Boys Town Last Friday

Boys Town, Nebr., wrestlers... wins in both first... wrestling... last... Calkins... and only...



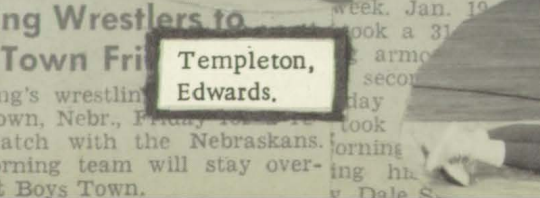
Stuvick, Brazeal.



Lovely, Firkins.

Corning Wrestlers to Boys Town Friday

Corning's wrestling... Boys Town, Nebr., Friday... turn match with the Nebraskans. The Corning team will stay over-night at Boys Town.



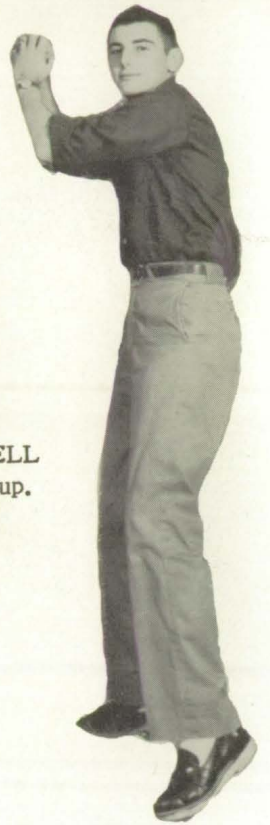
Templeton, Edwards.

Boys Town Wrestling on December 15

Corning's wrestling team... Wednesday night... match with Coach... school... matches... week, Jan. 19... took a 31... arm... second... day... took... Corning... ing ha... Dale S...



COACH SMITH
directs.



NORVELL
winds up.



LONNIE
catches.

LARRY
CARMICHAEL



GLENN
MAYO



PERCY
KEITH



RICHARD
MOSIER



BACK ROW: Norvell Houck, Merle Jordening, Ken Booth, Ray Bressler, Jerry Peckham,
Lonnie Timmerman. FRONT ROW: Dale Stuvick, Jack Weeks, Terry Wright, Dick
Hatton, Pedro Schafroth, Darwin Thompson, Coach Smith.

Junior High Athletics



BACK ROW, Left to Right: Coach Chuck Smith, Doug Ireland, Lonnie Mercier, Ed Yearington, Bill Van Amerogen, Larry Murphy, Bill Bray, Olin Willet, Jon Hill, Rex Young. FRONT ROW: Lowell Thomas, Ed Larson, Ray Bohanan, Roger King, Dan Pennington, Jim Goodvin, Lanny Paul, Gary Richards, Wayne Leusink, Jan Houch, Glen Odell, Kent Lines, Harvey Peterson

CHEERLEADERS



LEFT TO RIGHT: Dorothy Avaux, Karen Resh, Jane Cotter, Karen Wheeler, Marge Badgett.



BACK ROW, Left to Right: Doug Ireland, Lanny Paul, Glen Odell, Billy Bray, Lowell Thomas, Bryan Miller, Larry Murphy, Rex Young, Olin Willet. FRONT ROW: Coach Chuck Smith, Ken Thompson, Jon Hill, Lonnie Mercier, Harvey Peterson, Gary Richards, Kent Lines, Wayne Leusink, Jan Houch.

Junior High



SEVENTH GRADE, NORTH

THIRD ROW, Left to Right: Richard Lockwood, Billie Van Amerongen, Velda Robison, Yvonne Brazeal, Dorothy Herring, Ina Bressler, Claudia Spring, Jane Cotter, Clara Harvey. SECOND ROW: Sandra Nevius, Carol Moore, Jimmy Goodvin, Eddie Yearington, Donald Chatterton, Kenneth Thompson, Jane Booth, Janet Schafroth, Sonja Heaton and Mrs. Helen Parker, teacher. FIRST ROW: Jon Hill, Ivan Templeton, Lonnie Mercier, Olin Willett, Linda Houck, Rosemary Kingery, Mary Campbell, Nan Gauthier, Donald Selders.



SEVENTH GRADE, SOUTH

THIRD ROW: Lowell Thomas, Gary Richards, Lanny Paul, Galyn McIntire, Joyce Dixon, Mary Helen Hinck, Connie Miller, Karen Wheeler, Donna Selby, Dean Barker. SECOND ROW: Stephen Morris, Eddie Larson, Norman Stice, Dorothy Cochran, Betty Lou Campbell, Mary Armstrong, Sharon Hawkins, Karen Resh, Larry Crouse. FIRST ROW: James Smith, Delmar Wilson, Larry Brace, David Berscheid, Douglas Hight, Terry Helvie, Norma Thompson, Ellen Champlin and Mrs. Mildred Odell, teacher.



EIGHTH GRADE, SOUTH

THIRD ROW, Left to Right: Susan Hoskinson, Janet Readhead, Laura Turner, Elizabeth Turner, Judy Cox, Brian Miller, Jan Houck, Glenn Odell, Caren Simmons. SECOND ROW: Janet Angus, De Anna Cantieri, Jean Zimmerman, Janet Moore, Shirley Gibson, Barbara Peterson, Dorothy Avaux, Donna McElroy. FIRST ROW: Betty West, Billy Bray, Kent Lines, Roger King, Douglas Ireland, Jon Vernon, Rex Young, Mrs. Eva Blake, Teacher.



EIGHTH GRADE, NORTH

THIRD ROW, Left to Right: Margery Badgett, Beverly Keith, Lois Westlake, Judy Alford, Darlene Myers, Harvey Peterson, Danny Pennington, Wayne Leusink. SECOND ROW: Janice Resh, Carol Gentle, Rosemary Bailiff, Ursula Arndt, Ray Bohanan, Bill Stanley, Mr. Bell, Teacher. FIRST ROW: Shirley Johnston, Sharon Huff, Patricia Damewood, Donald Haggerty, Larry Murphy, Richard Harvey, Darrell Templeton.

Sponsors

We are grateful to the following businessmen for contributing to our Annual:

A. B. Turner and Son
Adams County Abstract Company
Adams County Farm Bureau
Adams County Farm Supply
Adams County Free Press
Adams County Co-op
American Theater
Anderson and Miller Oil Company
Andrews Clothing Company
Armour Produce
Biggar Company
Campbell and Tindall
Candy Kitchen
Carden Bootery
Carter Electric
Childers Standard Service
Coffee Shoppe
Corning Cleaners
Corning Concrete Company
Corning Hatchery
Corning Motor Company
Corning Municipal Utilities
Corning Oil D-X
Corning Plumbing and Heating
Coulter Garage
Cudahy Produce
Curry and Mack Hardware
Dairy Sweet
Davis, Ray, Insurance
Dawson Cafe
Devore Produce Company
DeVoe Tractor Company
Dielman Auto Parts
Dimmler Paint and Wallpaper
Downey Service Station
Driskill and Son
Dunham Drug
Farm Service Co-op
Farmers Co-op Creamery
Farmers Co-op Exchange
Henderson's Dress Shop
Hill's Ice and Locker Service

Home Bakery
Hy-Vee Store
Johns' Dairy
Keever Hardware
Larson and Jones Insurance
Lavelly and Readhead, Agents
Lawrence Skelly Service
Lines Furniture Store
Mack's Billiards
McClelland Drug
Means and Keefe Barber Shop
Moore's Pontiac and Oliver Service
Morgan Implement Company
Muschamp, Harold, Dentist
Norton Greenhouse
Okey-Vernon National Bank
Parker Jewelry
Preston Cleaners
Paul's Feed and Supply
P. M. Place Store
Red Star Mills
Reeve Jewelry
Rogers Plumbing and Grocery
Roland Funeral Home
Ruben Brothers Motor Company
Scott Produce
Silsby Super Market
Sickler and Miller Chevrolet
Spring Oil Company
Sundstrom Skylark Service
Sunset Motel
Thompson Electric Company
United Food Market
Van's Construction
Western Auto Store
Western Light and Telephone Company, Inc.
Wever Engineering
Wheeler Lumber Yard
Williams Gamble Store
Wilmarth Oil Company
Young Trucking

Boasters

Norma Darrach
Bea Bryson
Eileen S. Jones

Beth D. Streckhardt
Grace Van Belt
Heith Lawrence
Betty
Edward J. Galt

Edward J. Galt

Kenneth D. Sweet
Dean Frikins
Chester Nelson
Donald Wilmarth

Glenn Wrennen
Bruce Wilson
Lyle Silaby
Charles B. Craton
Kenny Darrach

Dick Arrison
Ralph Hickman
Amyt. Easterlie

Everd Tommeruben

Ethel Roland
Virginia Wickman
Jack H. Jones

Galow & Wesel
Frank Hall
Pauline Darrach

Edward P. (phonetic)

Edward

Barbara
Gerry

Bob Coulter

Donna
Dorothy
Dorothy

Pauline
Marianne Kinn
Lola Case
Dorothy
Dorothy
Dorothy

Pete Johnson
John
John

John
John
John
John
John

Index

- AMDOR, SHARON 22,31,32,52,67
ARBUCKLE, MARY 19,31,32,33,34,51,52,65
BADGETT, MARIE 11,49
BAILIFF, BEVERLY 22
BAKER, BETTY 22
BAUER, MARY ALICE 25,52,34
BAUER, PAUL 11,34,46,48
BAUMANN, DONALD 11,46,47,28
BENNETT, SONJA 19,31,32,49
BENNINGTON, SHARON 19,41,52
BERGMAN, IRENE 25,52
BERSCHIED, BERNICE 19
BIGGAR, JANE 22,31,32,52,55,65,28
BISSELL, DENNY 22,42,45,66,73
BISSELL, PATTY 25,31,49,28
BIXLER, JUDITH 22,34,49
BIXLER, SARAH 25,32,52
BOELLING, BARBARA 11,40,50
BOHAM, LYLE 25,45
BOOTH, KENNETH 19,53,77,80
BOSWELL, PATRICIA 19,31,32,52
BOWMAN, JANEICE 22,31,32,52
BRACE, GUY 11,44,50
BRACE, JOYCE 25
BRAZEAL, RONALD 25,45,78
BRENTON, SHERRYL 25,32,52
BRESSLER, RAY 22,43,73,74,75,78,79,80,28
BRIGGS, MARJORIE 1,11,39,40,52,59,64,65
BROWN, CHARLOTTE 22,31,32,52
BROWN, GERALD 22,46,48,73,78,29
BRUCE, GLADIS 25,49
CALKINS, DARYL 11,46,53,73,75,78,79
CALKINS, MYRNA 23,32,52
CAMPBELL, JACK 23
CAMPBELL, KATHY 22,23,31,33,32,34,65,66,68,52,28
CAMPBELL, VIOLET 23,50
CARMICHAEL, SALLY 23,32,41,52
CAROTHERS, JANICE 23,52
CASTILLO, DONNA 12,31,32,34,36,37,40,50,64,68,72,65,29
CASTILLO, LARRY 45,73,78,79,28
CHAFSA, DELMAR 22,45,55,29
CHAFSA, LETA 10,4,31,32,43,51,52,64,65,68,53,28
CHASE, DICK 25
CLOYD, ANITA 23,31,32,50
CLOYD, CHARLES 12,44,73,75,78,79,29
COONEY, JOHN 4,19,44,73,28
COOPER, RUBY JUNE 12,50
COOPER, SHARON 23,32,49
COULTHARD, BERNARD 23
COULTHARD, VERNON 23,78
CULLEN, ANITA 12,34,40,64,65,29
CURTIS, JIM 4,10,43,46,47,73,74,76,53,28
CURTIS, PATSY 19,32,51,52,53
CURTIS, SHIRLEY 25,32,52,29
CRISP, FRED 25,46,28
DAMEWOOD, LARRY 25
DAVIS, DEAN 20,46,53
DEVORE, MARCIA 23,36,37,34,52,53,72
DEWEES, CHARLES 20,34,44,53
DICKS, VERLIN 20
DICKS, VERNON 25,45,73,78
DILLINGER, DOROTHY 12,52
DILLINGER, RALPH 23,46
DIXON, IVAN 20,77
DIXON, MERLIN 25,45,34,77
DODGE, JOAN 23,32,52
DOTSON, JON 20,34,44,53
DOTSON, KAREN 23,31,32,33,34,52,65
DREW, BEVERLY 23,41,52
DUNCAN, MARJORY 23,49
DUNLAVY, DAVID 23,31,34,33,37,45,53,66
EDWARDS, DENNY 12,44,78,79
EVANS, JEANIE 23,52
EVANS, RENAE 25,32,52
FARRIS, GLEN 20,44,73,76,28
FIRKINS, NORMAN 20,46,73,74,78,79,48
FRESHOUR, JOAN 23,34,52
FRY, JIM 25,45,73,29
FUDGE, FRANCES 25,52
GASKILL, BEVERLY 20,31,32,33,34,52
GEBBIE, ARTHUR 20
GEBBIE, CARL 23,78
GEBBIE, HELEN 23,52
GEBBIE, JOHN 20,31,77
GEBBIE, PATRICIA 12,50
GENTLE, PHYLLIS 13,32,40,50,65,70
GIBSON, BILL 20,44,77,29
GILLET, RICHARD 23,46,48,73
GIVAN, RICHARD 23,45,53
GOLDSMITH, KAREN 25,32,52
GOLDSMITH, RUSSELL 25,46
GREENFIELD, CLIFFORD 23,34
GRIFFITH, CHARLES 13,44,64,65,66,67,73,75,76
GROFF, KEITH 13,46
HADLEY, JANICE 23,32,52,53,67
HAGGERTY, LARRY 20,28
HALEY, SHIRLEY 13,32
HALL, CONNIE 13,32,40,50,65,68,70
HANSEN, BOB 13,20,44
HANSEN, MARILYN 23,52
HARLOW, ANNA BELLE 20,50
HARLOW, BILL 26,78,29
HARRISON, DONALD 20,31,34,44,53,55,66,67
HARVEY, BETTY 20
HARVEY, CAROLYN 26,52
HARVEY, DAVID 20
HARVEY, JACK 13,31,46,47,65,66,73,74,75,79,78,28
HARVEY, KATHLYN 26,52
HATTON, DICK 20,73,76,80,28
HATTON, JAMES 20,46
HATTON, LARRY 20,46,78
HIGHT, BRUCE 20,53
HILEY, ARVID 26,41,45,78

HILL, CAROLYN 23,42,52,53
HOGAN, MARY CLAIRE 26,41,49
HOLBROOK, HELEN 4,14,42,50,53,55,57,65,67,28
HOLKER, DELORES 23,34,36,37,52
HOUCK, DICK 26,45
HOUCK, KAROL 20,31,32,34,52,65,72
JACOBS, CHARLES 23,46,73,78,79
JACOBS, HELEN 14,40
JACOBS, VELMA 19,31,32,33,34,65,67,68,28
JAMES, FRED 14,46,47,77
JENSEN, DONNA LEE 26,32,52
JENSEN, VANICE 23,32,52,68,29
JOHANNES, ELLA MAE 14,52
JOHANNES, LARRY 20,46
JOHANNES, LOIS 20,52
JOHNSON, FORREST 26,45
JOHNSON, GLENN 14,46,66,77
JOHNSON, LINNEA 1,20,31,32,39,52,53,65,67
JONES, CHARLES 26,41,45,28
JORDENING, JOYCE 1,20,31,32,39,52,65,67,69
JORDENING, MERLE 14,31,46,53,73,75,77,80,29
KEITH, JOHN 26,53,45,73,74,77
KEMBERY, KAREN RAE 23,34,52
KENNEDY, RICHARD 23,46,53
KERKMAN, JANICE 26,32,52,28
KING, ELEANOR 20,34,50
KINGERY, ELEANOR 15,32,49
KINGERY, EVELYN 23,34
KINGERY, FRANCIS 23,53
KINGERY, MARILYN 20,49
KINGERY, MARY LOU 26,32,34,52
KINNE, BETTY ANN 23,32,52
KIRKPATRICK, JOYCE 15,32,42,50
KNEER, BONNIE 26,50
LARSON, MARY LU 23,31,32,65,69,34
LAW, ROBERT 24
LAWRENCE, EVELYN 24,52
LAWRENCE, PHIL 40,43,44,70,78
LENZ, DALE 24,53,77,28
LENZ, LARRY 20,44,15
LEONARD, MIKE 24,59,77
LIMBAUGH, LOIS 24,31,32,34,52,53
LOGHRY, DONNA 41,52
LONG, EDITH 1,4,19,39,41,51,52,53,65,66,28
LONG, NORMA 26,41,52
LOVELY, JOHN 15,46,73,74,75,78,79,47,28
LYNAM, RONALD 26,77
MAAS, MARGERY 26
McGAFFIN, JANET 26,34,52,53,65,72
McGREGOR, LOIS JEAN 20,41,52,65
McINTIRE, MERLYN 26
McMULLEN, SALLY 26,50
MERCIER, MARILYN 1,20,31,32,39,49,53,65
MILLER, ANEITA 26,50
MILLER, LARRY 26,46,48
MITCHELL, BOB 4,46,28
MOORE, JANE 20,31,32,33,34,64,65,66,68
MOSIER, LOIS 24,50
MURDOCK, ROGER 20,46,73,78
NARIGON, JUNE 20,31,32,33,34,52
NAVEN, NORMAN 15,31,46,73,74,75,78,65,66,47
NEILL, RALPH 1,20,39,46,47,53,65,66,69
NELSON, MARILYN 1,31,32,39,15,50,53,29
NELSON, RICHARD 24,46,73,29
NELSON, ROBERT 20,46
NELSON, RUBY JUNE 15,32,50
NORCROSS, GARY 4,16,46,47,53,73,75,76,28
ODELL, CAROL 24,34,51,52,53
PALMER, NADINE 21,32,50,53
PECKHAM, JERRY 21,46,47,73,76,80
PENN, SHIRLEY 21,52
PENNINGTON, DOROTHY 21,43,50
PENNINGTON, LINDA 4,27,34,52,72,29
PENNINGTON, PHYLLIS 21
PERRIN, DOROTHY 24,52
PIERCY, JOANN 21,34,50
POSTEN CAROLYN 24,52
POSTEN MARJEAN 27,32,52,55,28
PRESTON, CONIE 10,43,50
PRESTON, LEO 24,46
PRESTON, RITA 27,50
QUINN, PATRICIA 1,21,39,49,65,67,68
QUINN, SHERRY KAY 27,32,49
REED, BETTY 27,50
REED, WAUNETA 27,50
RESH, PEGGY 40
RESH, ROBERT 27,46
REX, EVELYN 24,49
RHODES, DARRYL 27,45
RHODES, DONNA 31,32,33,34,40,52,64,65,15,29
RICHEY, SAM 24,45,78
RITNOUR, JANICE 1,10,39,40,50,53,64,65
ROBERTS, GLEN 21,46,48,73,78,79
ROBERTS, LARRY 24,46,73
ROBERTS, LILA 27,32
ROBERTS, RAY 16,44,55,59,65,73,74,75,28
ROBERTS, RITA 21,42,52,57,67,69,70,28
ROGERS, GEORGE 16,43,46,73,74,75,78,79,76,28
ROGERS, HARLEY 10,43,46,47,73,74,75,28
RORABAUGH, SHAROL 27,34,52
RUBEN, BOB 27,45,73,74,75,78
RUBEN, NORMA 21,31,34,32,52,53,65,66
RUBIN, JOLEEN 24,31,32,51,52,29
RUSSELL, BOYD 16,34,46,47,53
RUSSELL, JERRY 4,16,46,47,77
RYAN, FRANCIS 27,46,73
RYAN, LORETTA 21,49,65,69,70
SACKETT, JERRY 27,46,28
SCHAFER, DANNIE 21,46,55
SCHAFFER, DERYL 21,46
SCHAFFER, DONNA 14,43,50,57
SCHAFROTH, DAVID 16,41,43,44,73,75
SCHAFROTH, STEPHEN 24,73,74,75,76,80,28
SCHOOLING, RONALD 21,46
SCOTT, EDWARD 1,21,39,66
SEARCY, JUDY 21,31,32,34,52,29
SELBY, ELNORA 17,50
SELBY, JOYCE 21
SHULER, BILL 21,46,29
SICKELS, ARTHUR 22,24,46,73
SICKELS, JERRY 21,46,73
SICKLER, DIXIE 4,24,34,36,37,52,53,72,29

SICKLER, DOUG 1,39,40,43,44,53,17,64,65,73,74,75,
70,29
SLATER, PATRICIA 17,41,52
SMITH, LARRY 27,46
SNYDER, NORMA 24
SPRING, HELEN 27,52
STALDER, KAY 21,52
STANLEY, DICK 17,44,73,75
STEELE, CONNIE 24,52
STEUCKRADT, SANDRA 24,32,52,53
STICE, JEAN 17,32,50
STICE, VIVIAN 17,32,50
STILLINGER, JANET 21,51,52
STURDEVANT, EDITH 21,50
STUVICK, DALE 24,45,53,66,78,80,29
STUVICK, DONNA 21,31,52
SYMONDS, CHERYL 52,72,29
SYMONDS, RONNIE 24,55,73,77,28
TALTY, JEAN 22,24,34,65,28
TEMPLETON, CAROL 27,59
TEMPLETON, RICHARD 21,78,79,28
THOMAS, ALICE RAE 1,17,4,31,32,33,39,51,52,53,64,
65,66,68,28
THOMAS, CAROLYN 22,24,31,32,52,53,67
THOMAS, DAN 24,46
THOMAS, ROBERT 4,10,43,46,64,65,78,28
THOMAS, WILLIAM 24,45,31,53,28
THOMPSON, DARWIN 24,73,74,76,59,80,28
THOMPSON, GARY 21,31,33,34,44,53,65,66,29
THOMPSON, HAROLD 21,76,28
THOMPSON, PATTY 24,50
THOMPSON, ROBERT 21,46,59,73
TIMMERMAN, LARRY 46,73,28
TINDALL, CHERI 1,21,31,32,39,52,53,51,65,67,28
TOWNSEND, ROBERTA 21,52
TRANBARGER, FRANCIS 44,18,64
TURNER, TED 21,43,44,73,74,75,78,79,28
UPDIKE, SHERRY 24,31,32,34,52,53,68,72
VERNON, LINDA 21,31,32,33,34,52,65,70,29
VOGEL, CAROL 24,31,32,42,37,52,65,53,67,69,28
VOGEL, DONALD 4,19,46,29
WALFORD, TOM 21,73,29
WALTON, DOROTHY 24,50
WATERS, MONICA 24,32,42,50,65,66,67,69,72,29
WARNOCK, GLEA 1,21,31,32,39,52,59,58
WARNOCK, MAX 27,46
WEEKS, BERNARD 27,78,79,28
WEEKS, JACK 27,73,77,78,80,28

WEST, LEE 21,31,46,28
WESTLAKE, JACK 24,73
WESTLAKE, JACKIE 21
WESTLAKE, JERRY 21
WESTLAKE, LOWELL 27
WESTLAKE, MARIE 4,19,41,52,65,66,67,28
WILD, CONNIE 24,31,32,34,36,37,51,52,65,66,59,69,
72.
WILLIAMS, GARY 27,45,28
WILMARTH, DIANE 27,34,36,37,52,72,29
WILMARTH, HAROLD 46,48
WILMARTH, PAULINE 18,50
WRIGHT, TERRY 22,24,4,45,73,74,76,66,80,28
WYCOFF, MARY LOU 21
WYNN, DALE 21,77
YEARINGTON, LOIS 24,52
YOUNG, RONNIE 21,34,44,73

FACULTY

BALL, ROBERT E. 5,56
BELL, RICHARD W. 83
BLAKE, EVA A. 83
CURRIE, R. W. 4,7
DUNLAVY, D. D. 53,70
GARDNER, SHIRLEY A. 19,49,7
GAUTHIER, MARY 19,7
GREEN, HAZEL S. 6,41
HARRIS, JOHN J. 6,73,78
HOOVER, LEE L. 7,19,45
KAZEBEER, EVA 7,51,52
KRALL, ROBERT J. 7,43,73,77
LARIMER, HOWARD 43,67,77,73
LAWRENCE, ERNESTINE 5
LENZ, JOHN 7,64,65,70
LYONS, ANNA E. 5
LUNDGREN, DUANE I. 4,6,22,43,44
LYNAM, ANNA C. 7
MARSHALL 7,25,40,70
ODELL, MILDRED 82
PARKER, HELEN W. 82
REYNOLDS, ROBERT W. 6,34,70
ROLAND, AGNES 6,22,51,52
SANDY, CAROL 6,25
SMITH, CHARLES E. 6,73,80,81
THOMPSON, SHEILA 7,31,32,33
TURNER, ALMIRA O. 6,50,72
WHIPPLE, 6,19,46



INTER-COLLEGIATE PRESS

Publishers · Cover Manufacturers · Book Binders

FACTORY · HOME OFFICE
Kansas City





